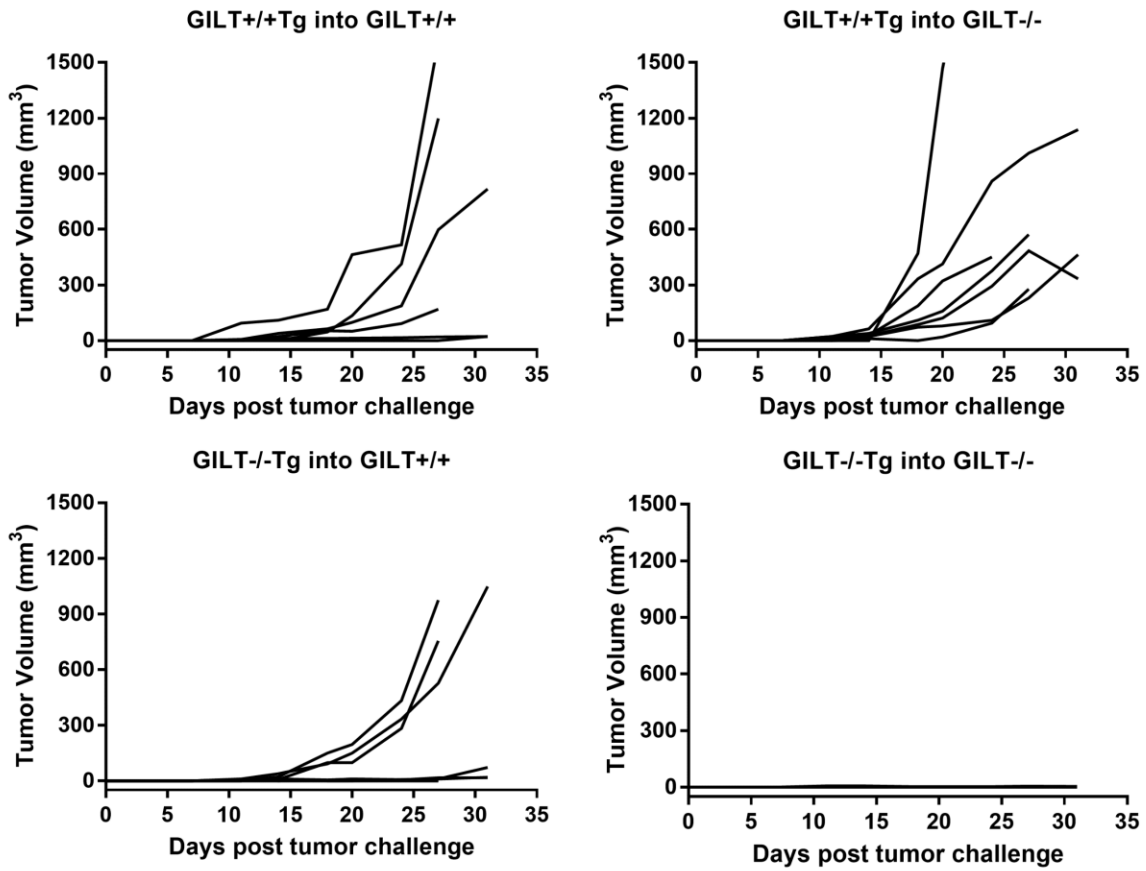


Supplemental Figure 1. Lethally irradiated RAG^{-/-} or GILT^{-/-}RAG^{-/-} mice were reconstituted with Ag+GILT^{+/+}Tg or Ag+GILT^{-/-}Tg bone marrow. After eight weeks, thymocyte and lymph node cell subsets were analyzed. **(A)** Absolute number of CD4SP thymocytes. **(B)** Absolute number of Foxp3⁺ V β 14+CD4SP thymocytes. **(C)** Absolute number of Foxp3⁺ V β 14+CD4+ lymph node cells. **(D)** Ratio of CD4SPV β 14+Foxp3⁻:CD4SPV β 14+Foxp3⁺ cells in the thymus. Gating as in Fig. 4. Data points represent individual mice in two pooled experiments. **, $p < 0.01$, ***, $p < 0.001$.



Supplemental Figure 2. Lethally irradiated RAG^{-/-} or GILT^{-/-}RAG^{-/-} mice were reconstituted with bone marrow from Ag+GILT^{+/+}Tg or Ag+GILT^{-/-}Tg mice. After eight weeks, mice were s.c. challenged with B16.F10 melanoma. Tumor volume (mm³) curves for individual mice are shown for each group. Data represent two pooled experiments with GILT^{+/+}Tg into GILT^{+/+} n = 7 mice, GILT^{+/+}Tg into GILT^{-/-} n = 7 mice, GILT^{-/-}Tg into GILT^{+/+} n = 8 mice, GILT^{-/-}Tg into GILT^{-/-} n = 8 mice.