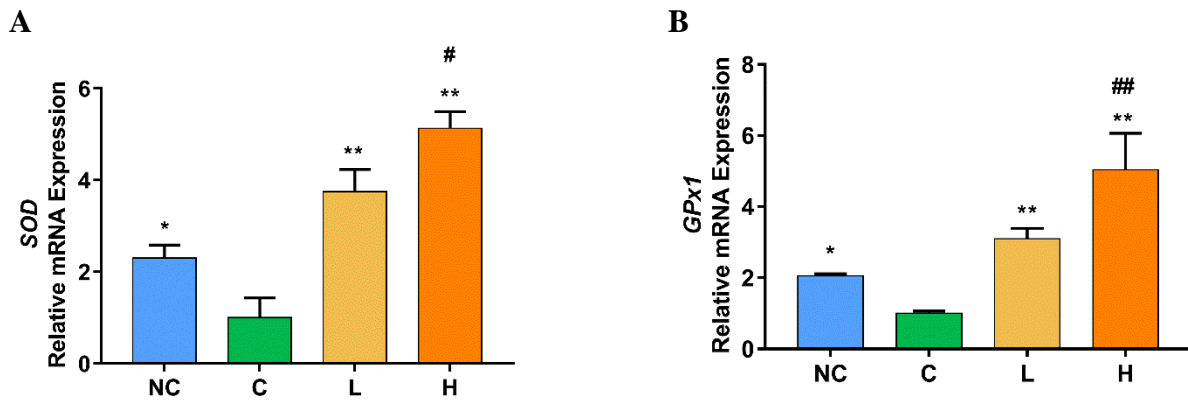


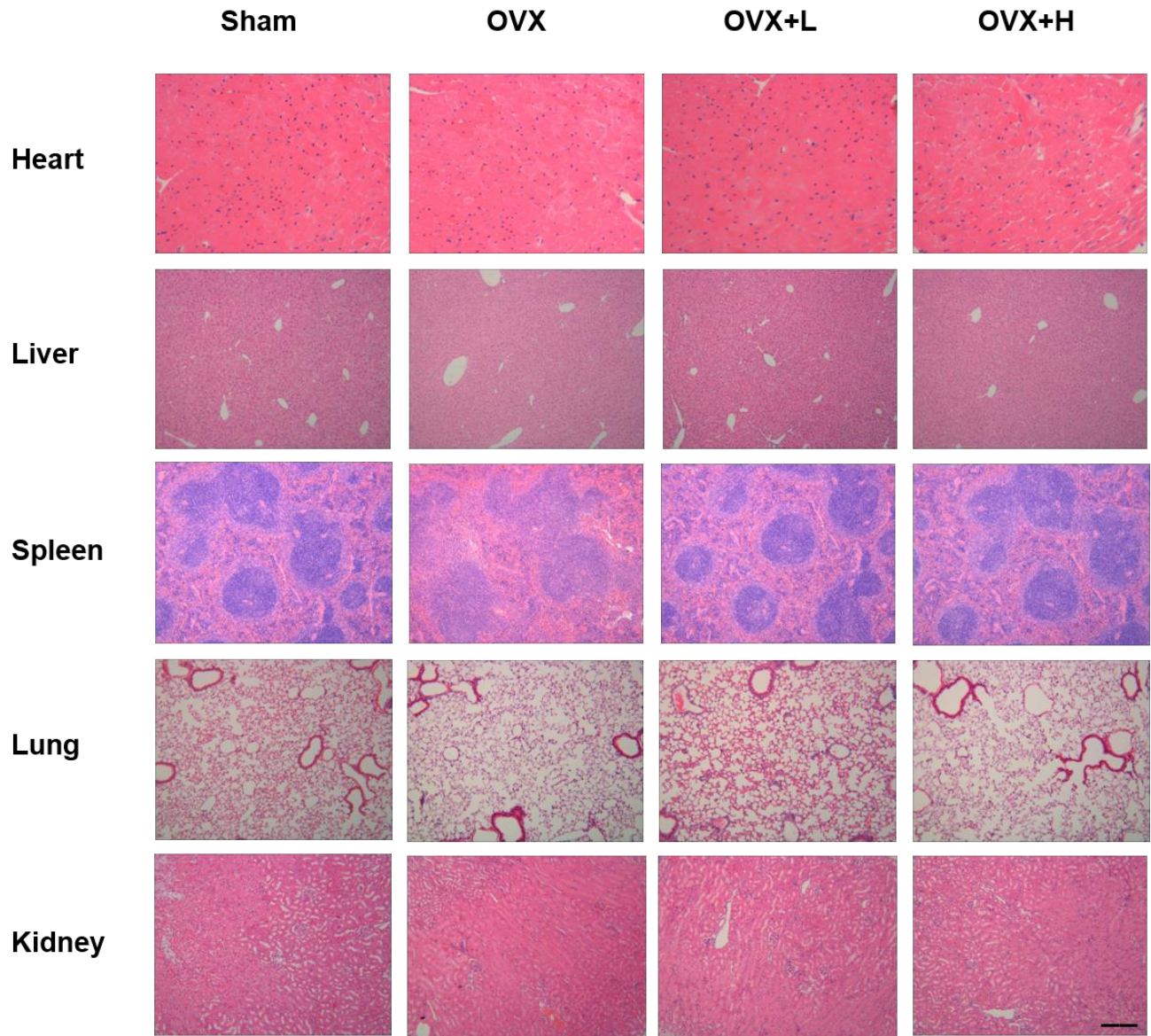
## Supplementary Material

**Table S1 Primer Sequences for RT-qPCR**

Gene	Sequence 5' to 3'	
GAPDH	F: GGGAAGCCCATCACCATCTT	R: GCCTCACCCCATTTGATGTT
TRAP	F: ACGGCTACTTGCGGTTTCA	R: TCCTTGGGAGGCTGGTCTT
MMP-9	F: GCTGACTACGATAAGGACGGCA	R: GCGGCCCTCAAAGATGAACGG
CTSK	F: GAAGAAGACTCACCAGAAGCAG	R: TCCAGGTTATGGGCAGAGATT
Nrf2	F: TCTTGAGTAAGTCGAGAAGTGT	R: GTTGAAACTGAGCGAAAAAGGC
HO-1	F: GAGATAGAGCGCAACAAGCAG	R: CTTGACCTCAGGTGTCATCTC
CAT	F: CCCCTATTGCCGTTTCGATTCT	R: TTCAGGTGAGTCTGTGGGTTT
SOD	F: CAGACCTGCCTTACGACTATGG	R: CTCGGTGGCGTTGAGATTGTT
GPX1	F: AGTCCACCGTGTATGCCTTCT	R: GAGACGCGACATTCTCAATGA



**Figure S1** TF3 enhanced the mRNA expression levels of *SOD* and *GPx1*. **(A)**The mRNA expression of *SOD*. **(B)**The mRNA expression of *GPx1*.  $n = 3$ , \* $P < 0.05$ , \*\* $P < 0.01$  compared with C group. # $P < 0.05$ , ## $P < 0.01$  compared with L group.



**Figure S2** TF3 did not lead to tissue damage in mice. Representative images of H&E staining of heart, liver, spleen, lung kidney of mice. Scale bar = 200  $\mu$ m.