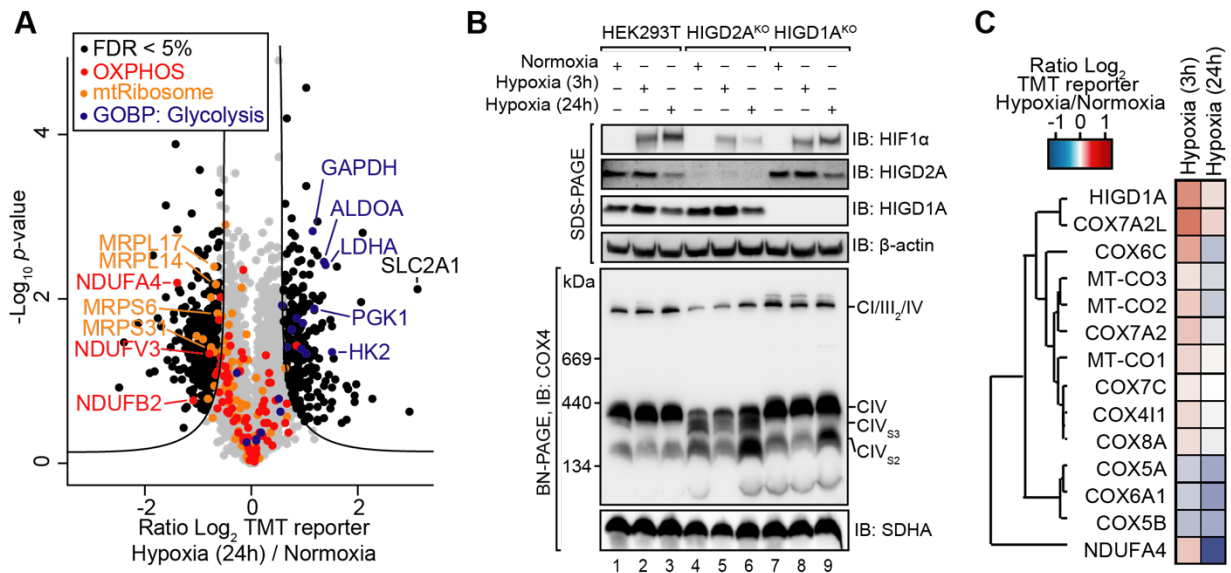


Supplementary Figure S1. Loss of HIGD2A leads to reduced levels of COX2 and COX6A. (A) HIGD1A^{KO} cells were analyzed by SDS-PAGE and immunoblotting with the indicated antibodies. (B) HIGD2A^{KO} cells were analyzed by SDS-PAGE and immunoblotting with the indicated antibodies. Mod., complex IV module.



Supplementary Figure S2. Hypoxia induces HIGD1A but not HIGD2A. (A) Volcano plots depicting relative levels of cellular proteins in HEK293T cells following 24 h of growth under hypoxic conditions. Black dots and the curved line represent significantly altered protein abundance determined through a false discovery rate-based approach (5% FDR, $s_0=1$). $N=2$ independent subcultures. GOBP, proteins contained within the Gene Ontology: Biological Process category. (B) Cells were grown under normoxia and the hypoxic conditions for the indicated times. Cell lysates were analyzed by SDS- and BN-PAGE and immunoblotting with the indicated antibodies. (C) The relative levels of complex IV subunits in HEK293T cells following 3 or 24 h of growth in hypoxia were subjected to hierarchical clustering and presented as a heatmap.