

TODAS PRENHES TESTANDO DIETAS

The NLMIXED Procedure

Specifications	
Data Set	WORK.IMPORT
Dependent Variable	CTRET
Distribution for Dependent Variable	Normal
Optimization Technique	Dual Quasi-Newton
Integration Method	None

Dimensions	
Observations Used	42
Observations Not Used	14
Total Observations	56
Parameters	5

Initial Parameters					
a1	b1	a2	b2	S2	Negative Log Likelihood
0.05	1.05	0.05	1.05	0.21	180.192729

Iteration History					
Iteration	Calls	Negative Log Likelihood	Difference	Maximum Gradient	Slope
1	7	137.0943	43.09844	1318.90	-726430
2	11	98.0169500	39.07734	294.345	-21044.7
3	13	81.6919290	16.32502	2487.06	-1122.40
4	17	61.3178859	20.37404	426.172	-20.1378
5	19	59.0393349	2.278551	507.269	-6.39925
6	22	57.5562425	1.483092	155.263	-1.51583
7	24	55.8671933	1.689049	107.243	-0.85808
8	27	55.7263640	0.140829	45.8212	-0.43716
9	29	55.5777096	0.148654	37.9049	-0.19478
10	32	55.5074674	0.070242	23.6671	-0.06518
11	34	55.4289013	0.078566	35.8151	-0.04980
12	37	55.4109136	0.017988	16.6072	-0.01709
13	40	55.4084834	0.00243	14.5478	-0.00342
14	43	55.4079725	0.000511	3.47603	-0.00052
15	46	55.4078084	0.000164	0.92525	-0.00020
16	49	55.4077975	0.000011	0.038687	-0.00001
17	52	55.4077973	1.807E-7	0.019494	-2.74E-7

TODAS PRENHES TESTANDO DIETAS

The NLMIXED Procedure

NOTE: GCONV convergence criterion satisfied.

Fit Statistics	
-2 Log Likelihood	110.8
AIC (smaller is better)	120.8
AICC (smaller is better)	122.5
BIC (smaller is better)	129.5

Parameter Estimates								
Parameter	Estimate	Standard Error	DF	t Value	Pr > t	95% Confidence Limits		Gradient
a1	0.06100	0.02599	42	2.35	0.0237	0.008550	0.1134	0.002597
b1	0.6818	0.2842	42	2.40	0.0210	0.1082	1.2553	-0.00016
a2	0.06006	0.002131	42	28.18	<.0001	0.05576	0.06436	0.019494
b2	0.6017	0.1438	42	4.18	0.0001	0.3115	0.8919	0.000057
S2	0.8192	0.1788	42	4.58	<.0001	0.4584	1.1800	0.000094

Correlation Matrix of Parameter Estimates					
	a1	b1	a2	b2	S2
a1	1.0000	0.9606	0.0000	0.0000	0.0002
b1	0.9606	1.0000	0.0000	0.0000	0.0002
a2	0.0000	0.0000	1.0000	0.0752	0.0002
b2	0.0000	0.0000	0.0752	1.0000	0.0000
S2	0.0002	0.0002	0.0002	0.0000	1.0000

Additional Estimates								
Label	Estimate	Standard Error	DF	t Value	Pr > t	Alpha	Lower	Upper
Va1-Pa2	0.000935	0.02608	42	0.04	0.9716	0.05	-0.05169	0.05356
Vb1-Pb2	0.08007	0.3185	42	0.25	0.8027	0.05	-0.5627	0.7229

Correlation Matrix of Additional Estimates		
Label	Corr1	Corr2
Va1-Pa2	1.0000	0.8570
Vb1-Pb2	0.8570	1.0000

GANHO APENAS PRENHES

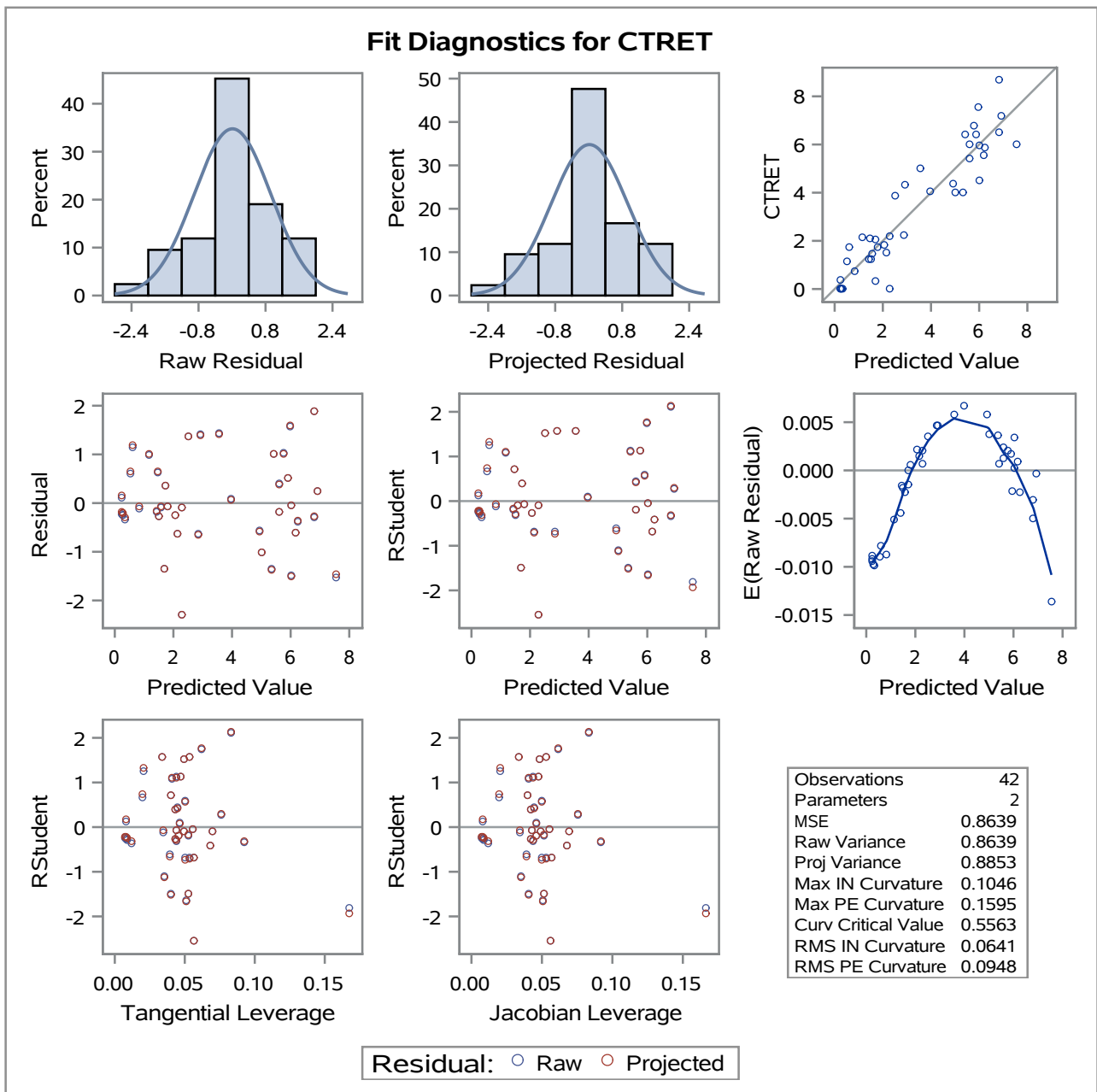
The NLIN Procedure
 Dependent Variable CTRET
 Method: Gauss-Newton

Iterative Phase			
Iter	a	b	Sum of Squares
0	0.0860	1.0500	169.1
1	0.0604	0.6979	34.8308
2	0.0600	0.6544	34.5556
3	0.0600	0.6562	34.5551
4	0.0600	0.6562	34.5551

Note: Missing values were generated as a result of performing an operation on missing values. Each place is given by (number of times) AT (statement)/(line):(column).

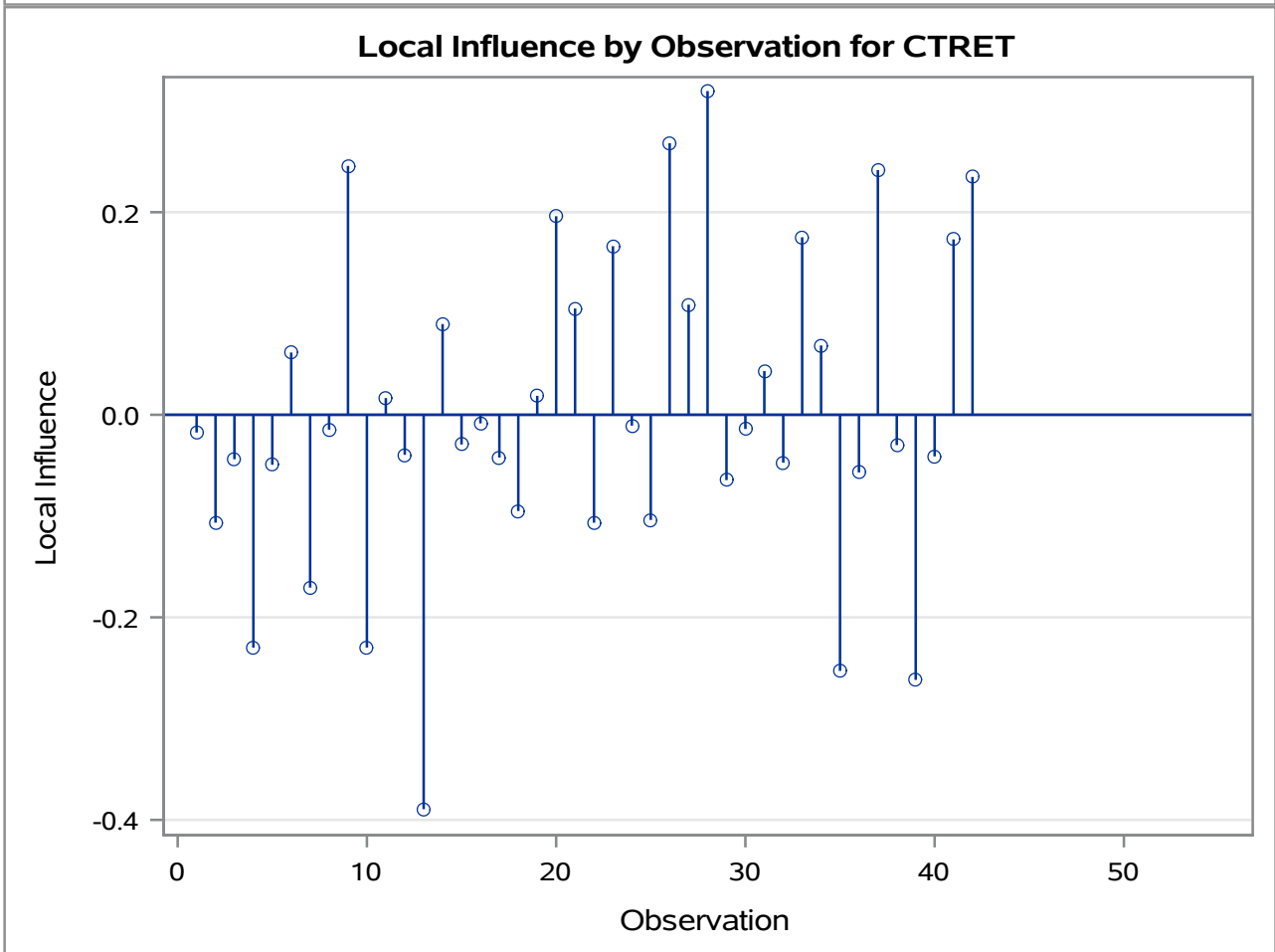
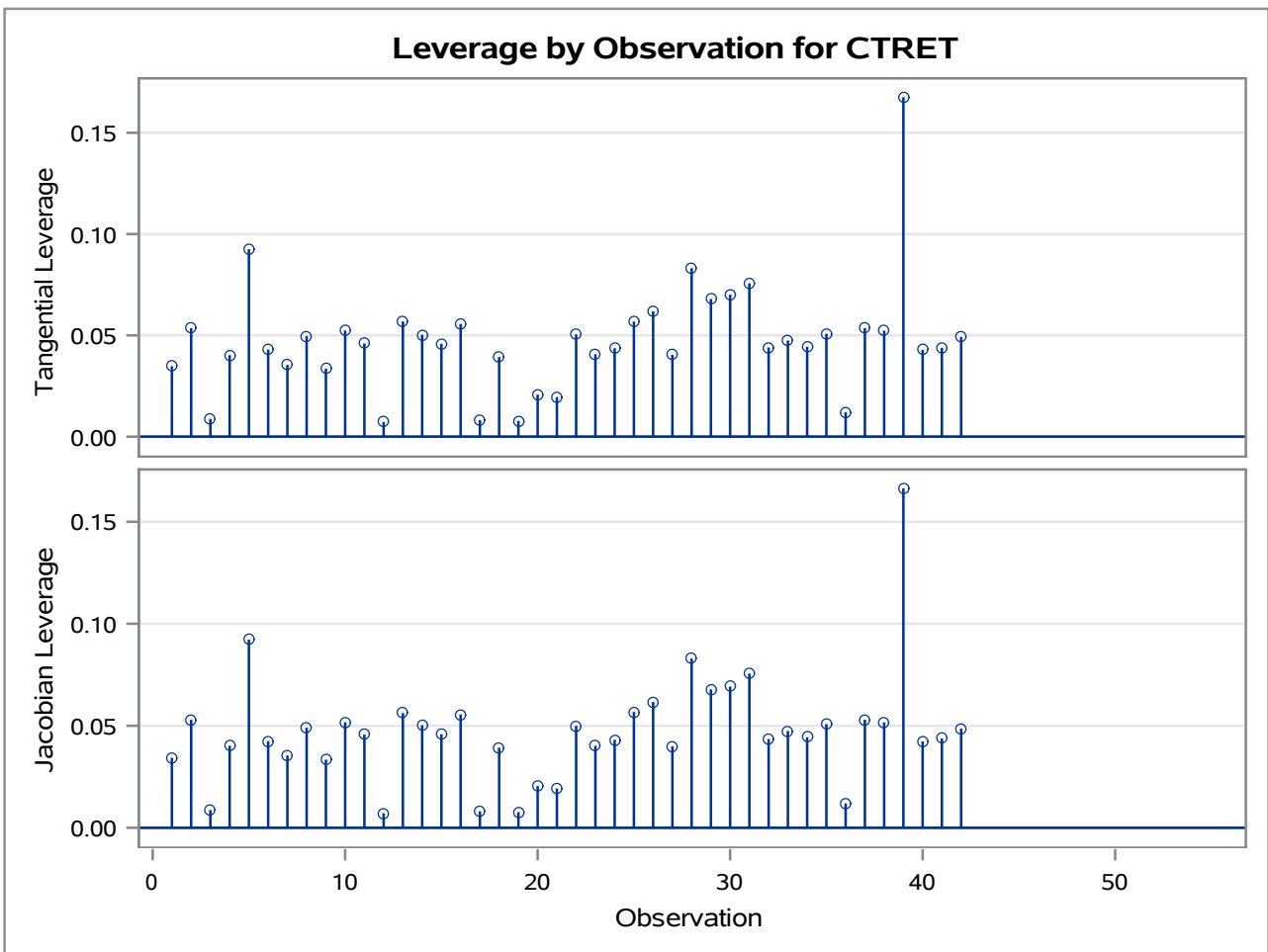
14 AT 1/96:25

NOTE: Convergence criterion met.



GANHO APENAS PRENHES

The NLIN Procedure
 Dependent Variable CTRET
 Method: Gauss-Newton



GANHO APENAS PRENHES

The NLIN Procedure

Estimation Summary	
Method	Gauss-Newton
Iterations	4
R	6.051E-7
PPC(b)	4.228E-7
RPC(b)	0.000032
Object	2.03E-9
Objective	34.55506
Observations Read	56
Observations Used	42
Observations Missing	14

Note: An intercept was not specified for this model.

Source	DF	Sum of Squares	Mean Square	F Value	Approx Pr > F
Model	2	712.7	356.4	412.52	<.0001
Error	40	34.5551	0.8639		
Uncorrected Total	42	747.3			

Parameter	Estimate	Approx Std Error	Approximate 95% Confidence Limits	
a	0.0600	0.00217	0.0556	0.0644
b	0.6562	0.0725	0.5097	0.8027

Approximate Correlation Matrix		
	a	b
a	1.0000000	0.2712055
b	0.2712055	1.0000000

GANHO APENAS PRENHES

The REG Procedure
Model: MODEL1
Dependent Variable: Pred Predicted Value

Number of Observations Read	56
Number of Observations Used	42
Number of Observations with Missing Values	14

Analysis of Variance					
Source	DF	Sum of Squares	Mean Square	F Value	Pr > F
Model	1	202.07130	202.07130	264.76	<.0001
Error	40	30.52947	0.76324		
Corrected Total	41	232.60077			

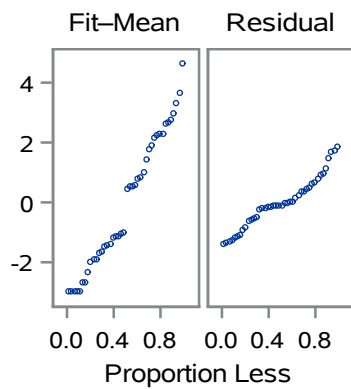
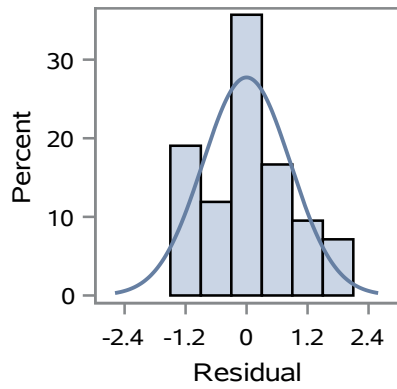
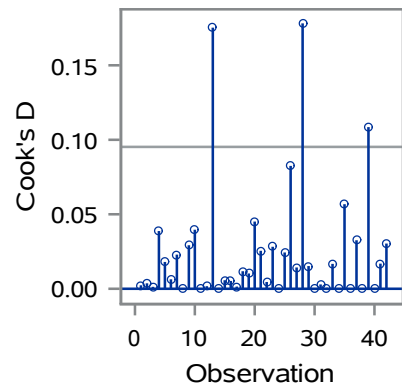
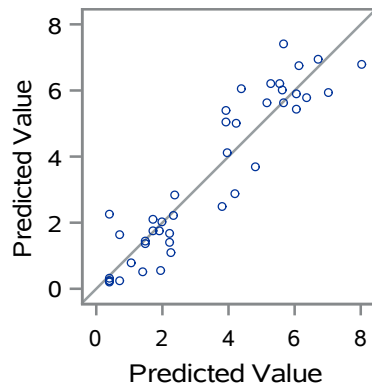
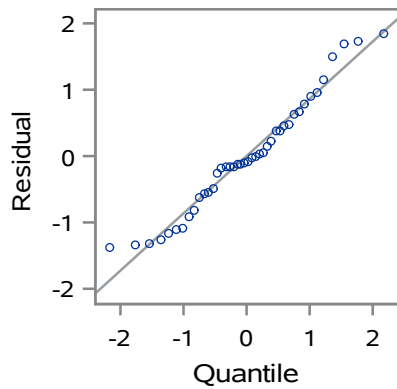
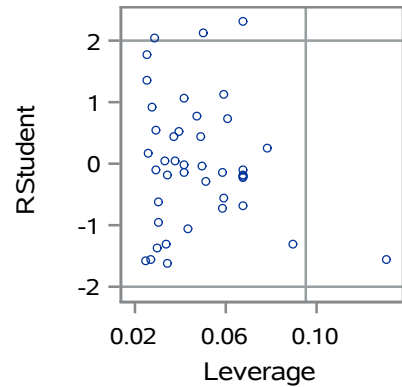
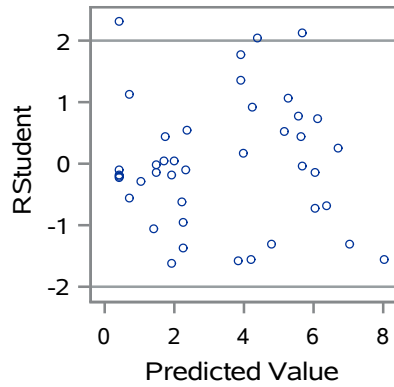
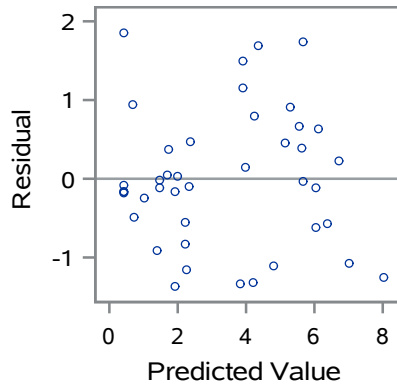
Root MSE	0.87363	R-Square	0.8687
Dependent Mean	3.38163	Adj R-Sq	0.8655
Coeff Var	25.83474		

Parameter Estimates						
Variable	Label	DF	Parameter Estimate	Standard Error	t Value	Pr > t
Intercept	Intercept	1	0.39479	0.22775	1.73	0.0907
CTRET	CTRET	1	0.87852	0.05399	16.27	<.0001

GANHO APENAS PRENHES

The REG Procedure
 Model: MODEL1
 Dependent Variable: Pred Predicted Value

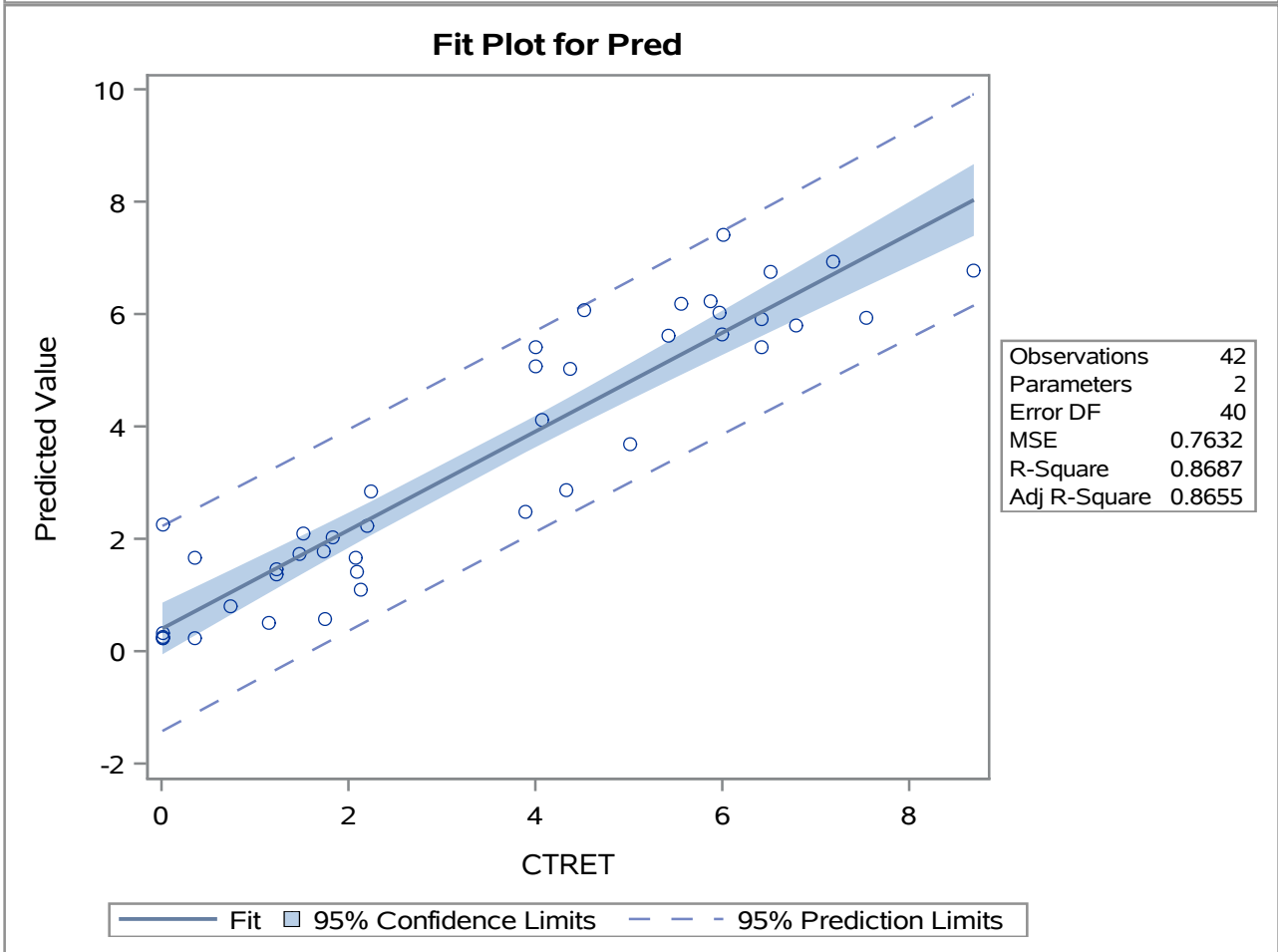
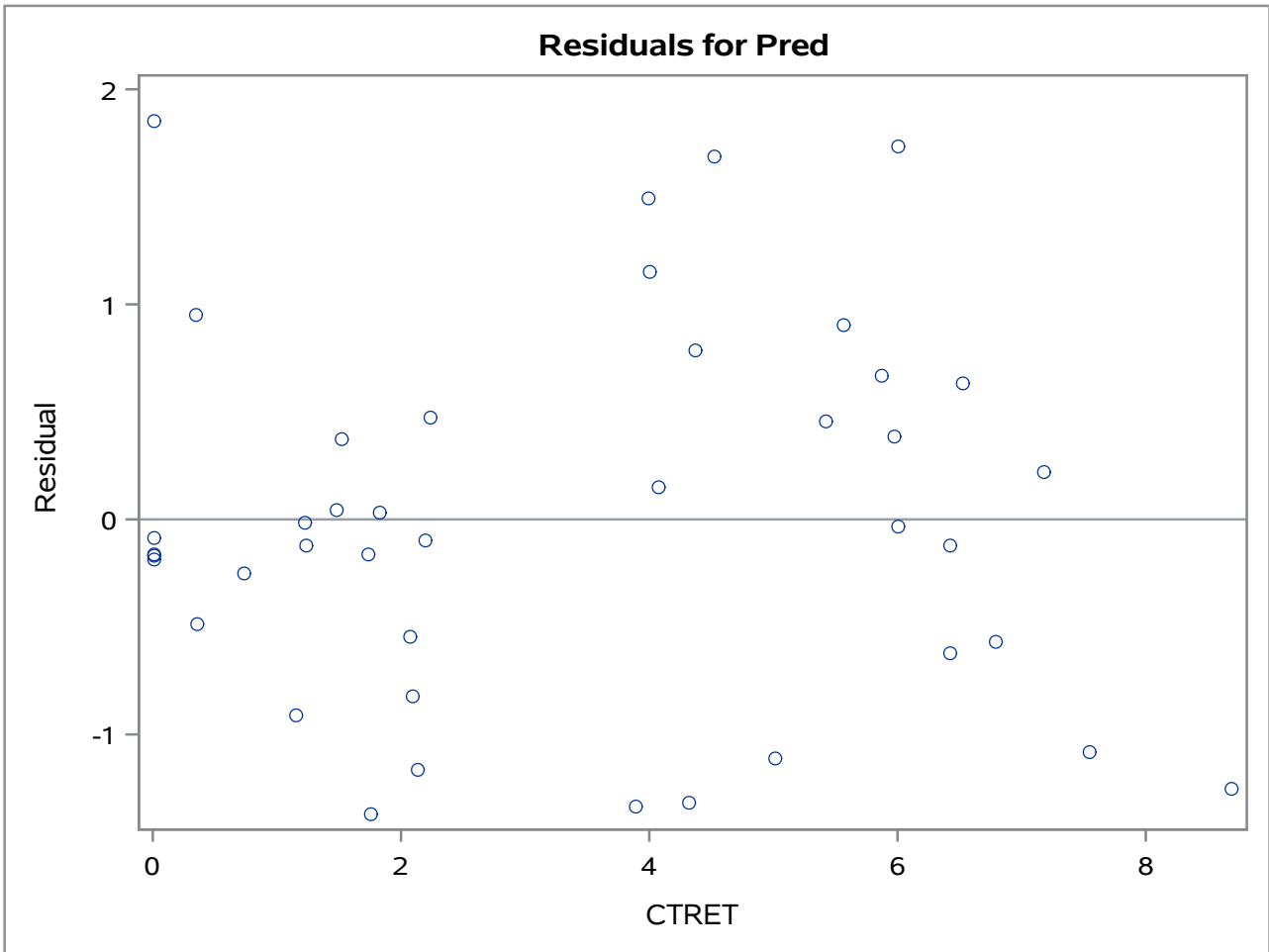
Fit Diagnostics for Pred



Observations	42
Parameters	2
Error DF	40
MSE	0.7632
R-Square	0.8687
Adj R-Square	0.8655

GANHO APENAS PRENHES

The REG Procedure
 Model: MODEL1
 Dependent Variable: Pred Predicted Value



GANHO APENAS PRENHES**The MEANS Procedure**

Analysis Variable : MSE				
N	Mean	Std Dev	Minimum	Maximum
42	0.8192135	1.1312515	0.000499209	5.0486955