

The CONTENTS Procedure

Data Set Name	WORK.IMPORT	Observations	340
Member Type	DATA	Variables	132
Engine	V9	Indexes	0
Created	06/03/2020 17:45:54	Observation Length	1080
Last Modified	06/03/2020 17:45:54	Deleted Observations	0
Protection		Compressed	NO
Data Set Type		Sorted	NO
Label			
Data Representation	SOLARIS_X86_64, LINUX_X86_64, ALPHA_TRU64, LINUX_IA64		
Encoding	utf-8 Unicode (UTF-8)		

Engine/Host Dependent Information	
Data Set Page Size	90112
Number of Data Set Pages	5
First Data Page	1
Max Obs per Page	83
Obs in First Data Page	65
Number of Data Set Repairs	0
Filename	/tmp/SAS_work184800000A1A_localhost.localdomain/SAS_work148F00000A1A_localhost.localdomain/import.sas7bdat
Release Created	9.0401M6
Host Created	Linux
Inode Number	671913
Access Permission	rw-rw-r--
Owner Name	sasdemo
File Size	528KB
File Size (bytes)	540672

The CONTENTS Procedure

Alphabetic List of Variables and Attributes						
#	Variable	Type	Len	Format	Informat	Label
7	AL	Char	3	\$3.	\$3.	AL
104	ANIMAL	Num	8	BEST.		ANIMAL
19	CARi_EE	Num	8	15.2		CARi_EE
21	CARi_MCAL	Num	8	15.2		CARi_MCAL
13	CARi_MN	Num	8	BEST.		CARi_MN
15	CARi_MS	Num	8	15.2		CARi_MS
17	CARi_PB	Num	8	15.2		CARi_PB
113	CCVzf	Num	8	15.2		CCVzf
114	CCVzi	Num	8	15.2		CCVzi
106	CEM_UTM	Num	8	COMMA15.4		CEM_UTM
105	CEM_dia	Num	8	COMMA15.4		CEM_dia
35	CTMEDIO	Num	8	15.2		CTMEDIO
45	CTRET	Num	8	15.2		CTRET
42	CT_EE	Num	8	15.2		CT_EE
44	CT_MCAL	Num	8	15.2		CT_MCAL
34	CT_MN	Num	8	15.2		CT_MN
38	CT_MS	Num	8	15.2		CT_MS
40	CT_PB	Num	8	15.2		CT_PB
41	CTi_EE	Num	8	15.2		CTi_EE
43	CTi_MCAL	Num	8	15.2		CTi_MCAL
33	CTi_MN	Num	8	15.2		CTi_MN
37	CTi_MS	Num	8	15.2		CTi_MS
39	CTi_PB	Num	8	15.2		CTi_PB
20	Carca_a_EE	Num	8	15.2		Carçaça_EE
22	Carca_a_MCAL	Num	8	15.2		Carçaça_MCAL
14	Carca_a_MN	Num	8	15.2		Carçaça_MN
16	Carca_a_MS	Num	8	15.2		Carçaça_MS
18	Carca_a_PB	Num	8	15.2		Carçaça_PB
2	DC	Num	8	BEST.		DC
8	DIETA	Num	8	BEST.		DIETA
93	EBG	Num	8	15.2		EBG
95	EBGc	Num	8	15.2		EBGc
117	ELM	Num	8	COMMA15.3		ELM
129	ELM_nrc_	Num	8	15.2		ELM(nrc)
118	EMM	Num	8	COMMA15.3		EMM
120	EMM_1	Char	24	\$24.	\$24.	EMM_1

The CONTENTS Procedure

Alphabetic List of Variables and Attributes						
#	Variable	Type	Len	Format	Informat	Label
130	EMM_nrc_	Num	8	15.2		EMM(nrc)
108	ER	Num	8	15.2		ER
109	ERDIA	Num	8	15.2		ERDIA
110	ER_UTM	Num	8	COMMA15.3		ER UTM
111	ER_UTM_dia	Num	8	COMMA15.3		ER_UTM_dia
103	EXPD	Num	8	COMMA15.4		EXPD
102	EXPS	Num	8	COMMA15.4		EXPS
101	EXP_DUPLO	Num	8	15.2		EXP DUPLO
100	EXP_SIMPLES	Num	8	15.2		EXP SIMPLES
122	Elgest	Char	18	\$18.	\$18.	Elgest
127	Elm_1	Num	8	15.2		Elm_1
131	Elm_brcorte_	Num	8	BEST.		Elm(brcorte)
128	Emm_2	Num	8	15.2		Emm_2
132	Emm_brcorte_	Num	8	BEST.		Emm(brcorte)
83	Feto_EE	Num	8	15.2		Feto_EE
84	Feto_MCAL	Num	8	15.2		Feto_MCAL
80	Feto_MN	Num	8	15.2		Feto_MN
81	Feto_MS	Num	8	15.2		Feto_MS
82	Feto_PB	Num	8	15.2		Feto_PB
36	GCT	Num	8	15.2		GCT
90	GESTMCAL	Num	8	15.2		GESTMCAL
87	GESTMCALi	Num	8	15.2		GESTMCALi
55	GM_EE	Num	8	15.2		GM_EE
57	GM_MCAL	Num	8	15.2		GM_MCAL
49	GM_MN	Num	8	15.2		GM_MN
51	GM_MS	Num	8	15.2		GM_MS
53	GM_PB	Num	8	15.2		GM_PB
54	GMi_EE	Num	8	15.2		GMi_EE
56	GMi_MCAL	Num	8	15.2		GMi_MCAL
48	GMi_MN	Num	8	15.2		GMi_MN
50	GMi_MS	Num	8	15.2		GMi_MS
52	GMi_PB	Num	8	15.2		GMi_PB
9	GPCVZ	Num	8	BEST.		GPCVZ
126	GPCZ	Num	8	15.2		GPCZ
3	GT	Num	8	BEST.		GT
78	LA_EE	Num	8	15.2		LA_EE

The CONTENTS Procedure

Alphabetic List of Variables and Attributes						
#	Variable	Type	Len	Format	Informat	Label
79	LA_MCAL	Num	8	15.2		LA_MCAL
75	LA_MN	Num	8	15.2		LA_MN
76	LA_MS	Num	8	15.2		LA_MS
77	LA_PB	Num	8	15.2		LA_PB
10	LGPCVZ	Num	8	BEST.		LGPCVZ
46	LOGCTRET	Num	8	BEST.		LOGCTRET
94	LOGEBGUTM	Num	8	COMMA15.4		LOGEBGUTM
112	LOGGER	Num	8	COMMA15.3		LOGGER
47	LOGGCT	Num	8	15.2		LOGGCT
121	MEG	Char	18	\$18.	\$18.	MEG
123	MEGEST	Num	8	BEST.		MEGEST
91	McalGESTopen	Num	8	15.2		McalGESTopen
92	McalGESTpreg	Num	8	15.2		McalGESTpreg
29	NCARi_EE	Num	8	15.2		NCARi_EE
31	NCARi_MCAL	Num	8	15.2		NCARi_MCAL
23	NCARi_MN	Num	8	15.2		NCARi_MN
25	NCARi_MS	Num	8	15.2		NCARi_MS
27	NCARi_PB	Num	8	15.2		NCARi_PB
30	NCarca__a_EE	Num	8	15.2		NCarcaça_EE
32	NCarca__a_MCAL	Num	8	15.2		NCarcaça_MCAL
24	NCarca__a_MN	Num	8	15.2		NCarcaça_MN
26	NCarca__a_MS	Num	8	15.2		NCarcaça_MS
28	NCarca__a_PB	Num	8	15.2		NCarcaça_PB
116	PC	Num	8	COMMA15.3		PC
11	PCVzf	Num	8	15.2		PCVzf
12	PCVzi	Num	8	BEST.		PCVzi
115	PC_UTM	Num	8	COMMA15.3		PC_UTM
73	Placenta_EE	Num	8	15.2		Placenta_EE
74	Placenta_MCAL	Num	8	15.2		Placenta_MCAL
70	Placenta_MN	Num	8	15.2		Placenta_MN
71	Placenta_MS	Num	8	15.2		Placenta_MS
72	Placenta_PB	Num	8	15.2		Placenta_PB
97	SALDO	Num	8	15.2		SALDO
98	SALDO_D	Num	8	15.2		SALDO/D
58	SALDO_GM	Num	8	15.2		SALDO GM
99	SALDO_UG	Num	8	15.2		SALDO UG

The CONTENTS Procedure

Alphabetic List of Variables and Attributes						
#	Variable	Type	Len	Format	Informat	Label
69	SALDO_UTERO	Num	8	15.2		SALDO UTERO
4	ST	Char	1	\$1.	\$1.	ST
5	STM	Num	8	BEST.		STM
6	TG	Num	8	BEST.		TG
65	UTEROi_EE	Num	8	15.2		UTEROi_EE
67	UTEROi_MCAL	Num	8	15.2		UTEROi_MCAL
59	UTEROi_MN	Num	8	15.2		UTEROi_MN
61	UTEROi_MS	Num	8	15.2		UTEROi_MS
63	UTEROi_PB	Num	8	15.2		UTEROi_PB
107	UTM	Num	8	15.2		UTM
125	UTM_1	Num	8	15.2		UTM_1
96	UTMc	Num	8	COMMA15.4		UTMc
66	Utero_EE	Num	8	15.2		Utero_EE
68	Utero_MCAL	Num	8	15.2		Utero_MCAL
60	Utero_MN	Num	8	15.2		Utero_MN
62	Utero_MS	Num	8	15.2		Utero_MS
64	Utero_PB	Num	8	15.2		Utero_PB
1	anim	Num	8	BEST.		anim
88	fEBWopen	Num	8	15.2		fEBWopen
86	kgGEST	Num	8	15.2		kgGEST
85	kgGESTopen	Num	8	15.2		kgGESTopen
89	kgGESTpreg	Num	8	15.2		kgGESTpreg
119	km	Num	8	15.2		km
124	kpreg	Num	8	COMMA15.4		kpreg

**The NLIN Procedure
Dependent Variable GESTMCAL
Method: Gauss-Newton**

Iterative Phase			
Iter	a	b	Sum of Squares
0	0.000040	2.0200	1396.0
1	0.000026	2.1095	1093.9
2	0.000018	2.2271	465.2
3	0.000021	2.2166	399.7
4	0.000022	2.2175	398.8
5	0.000022	2.2174	398.8

NOTE: Convergence criterion met.

Estimation Summary	
Method	Gauss-Newton
Iterations	5
Subiterations	2
Average Subiterations	0.4
R	1.688E-7
PPC(a)	5.249E-8
RPC(a)	0.000072
Object	1.382E-8
Objective	398.8041
Observations Read	18
Observations Used	17
Observations Missing	1

Note: An intercept was not specified for this model.

Source	DF	Sum of Squares	Mean Square	F Value	Approx Pr > F
Model	2	4879.5	2439.8	91.77	<.0001
Error	15	398.8	26.5869		
Uncorrected Total	17	5278.3			

Parameter	Estimate	Approx Std Error	Approximate 95% Confidence Limits	
a	0.000022	0.000066	-0.00012	0.000162
b	2.2174	0.4939	1.1648	3.2701

The NLIN Procedure

Approximate Correlation Matrix		
	a	b
a	1.0000000	-0.9997071
b	-0.9997071	1.0000000

The REG Procedure
Model: MODEL1
Dependent Variable: pred

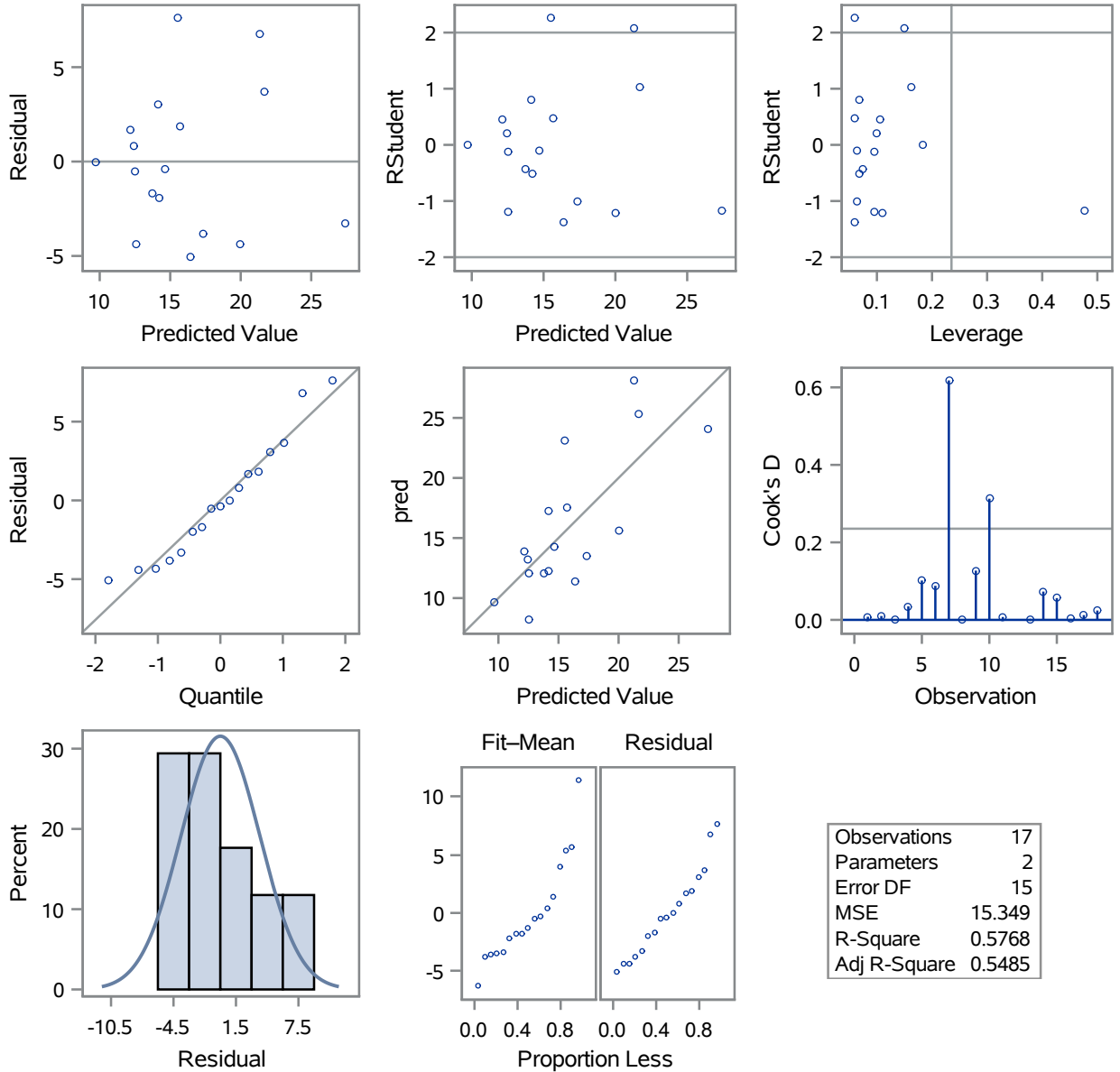
Analysis of Variance					
Source	DF	Sum of Squares	Mean Square	F Value	Pr > F
Model	1	313.73335	313.73335	20.44	0.0004
Error	15	230.23247	15.34883		
Corrected Total	16	543.96582			

Root MSE	3.91776	R-Square	0.5768
Dependent Mean	15.96975	Adj R-Sq	0.5485
Coeff Var	24.53238		

Parameter Estimates						
Variable	Label	DF	Parameter Estimate	Standard Error	t Value	Pr > t
Intercept	Intercept	1	6.75417	2.24895	3.00	0.0089
GESTMCAL	GESTMCAL	1	0.57703	0.12763	4.52	0.0004

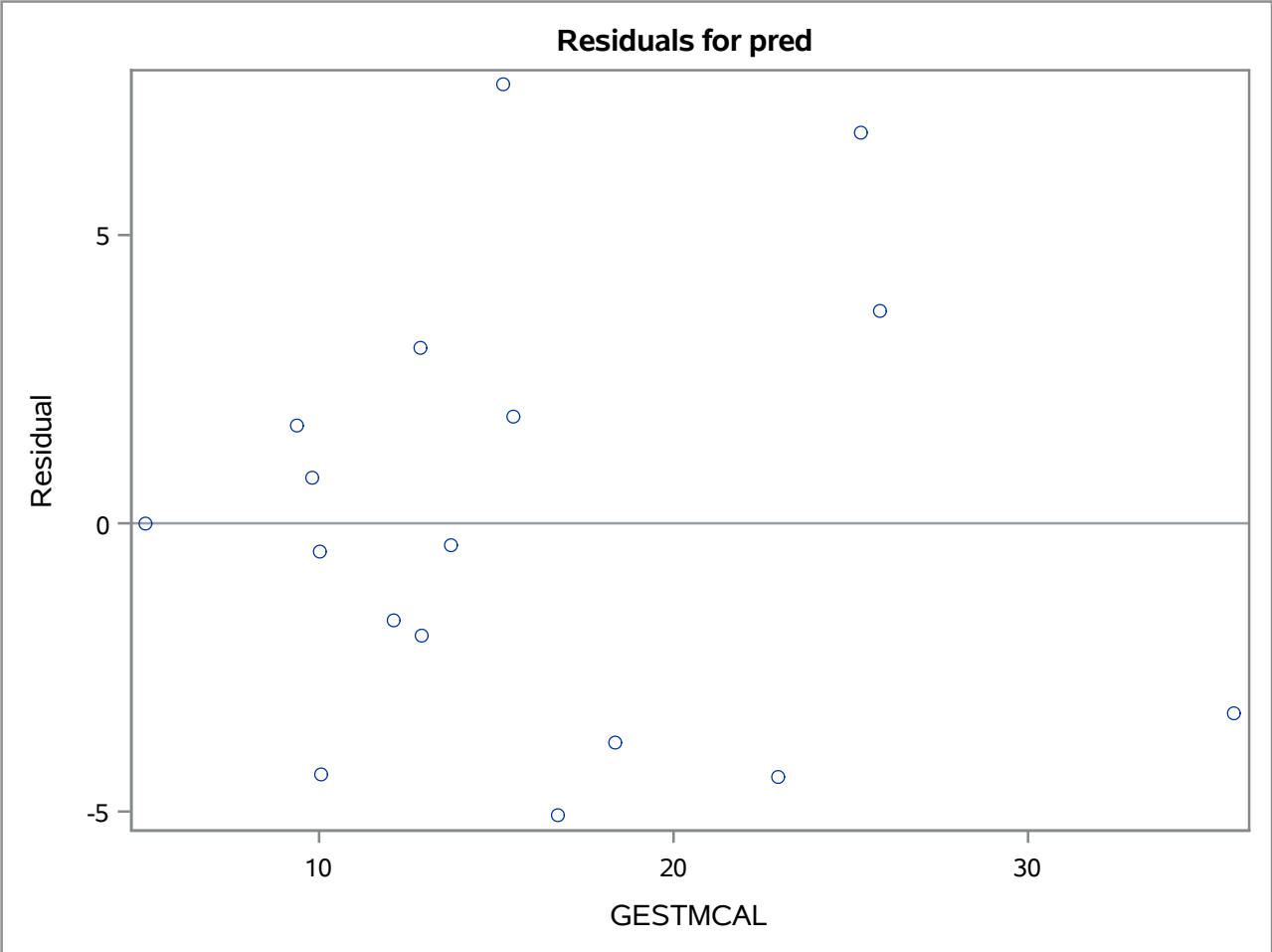
The REG Procedure
 Model: MODEL1
 Dependent Variable: pred

Fit Diagnostics for pred

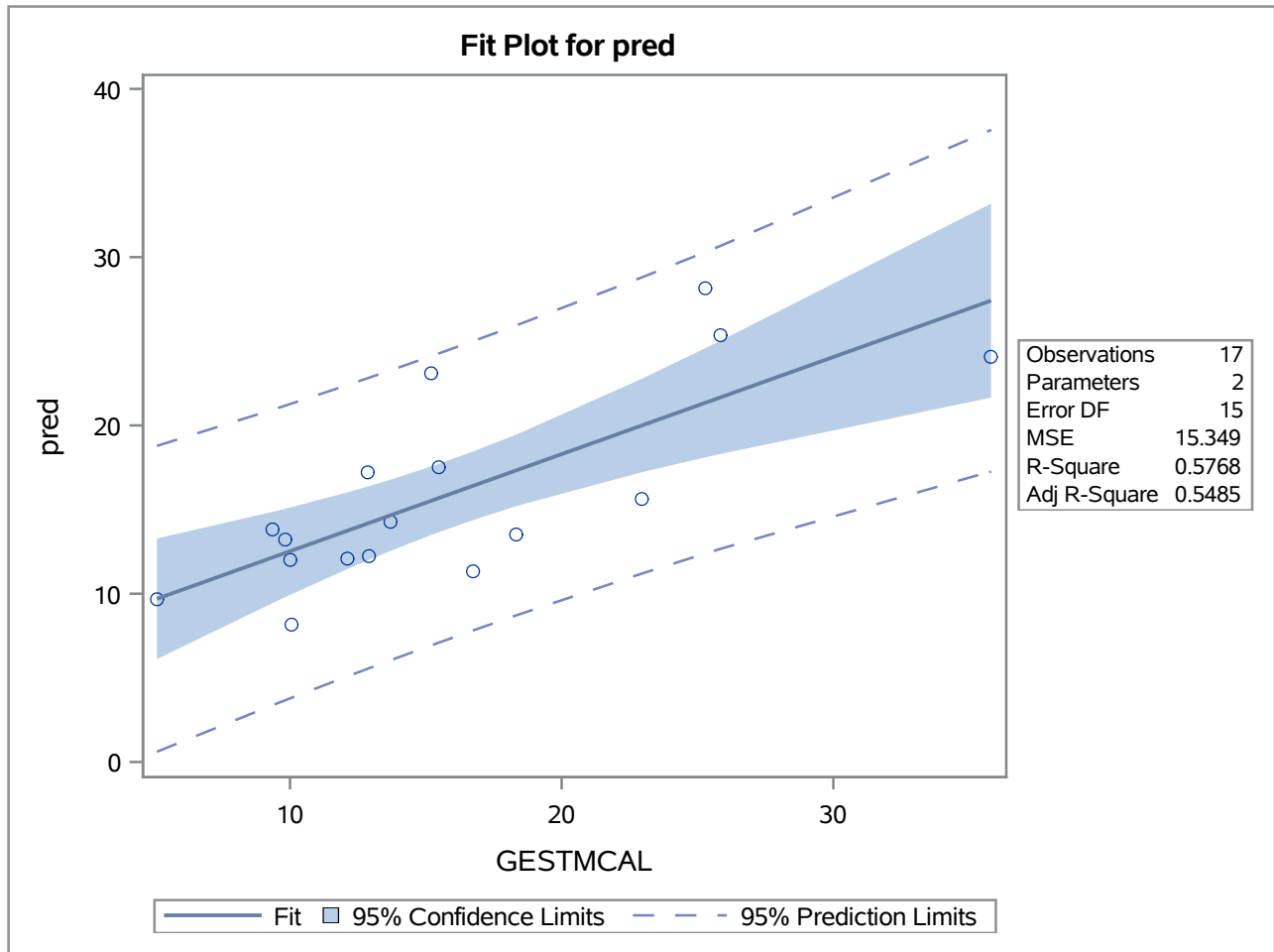


Observations	17
Parameters	2
Error DF	15
MSE	15.349
R-Square	0.5768
Adj R-Square	0.5485

The REG Procedure
Model: MODEL1
Dependent Variable: pred



The REG Procedure
Model: MODEL1
Dependent Variable: pred



The MEANS Procedure

Analysis Variable : MSE				
N	Mean	Std Dev	Minimum	Maximum
17	23.4590627	34.5457785	0.0031314	136.7694281

**The NLIN Procedure
Dependent Variable kgGEST
Method: Gauss-Newton**

Iterative Phase			
Iter	a	b	Sum of Squares
0	0.000040	2.0200	359.6
1	0.000073	1.8169	59.5803
2	0.000083	1.7956	59.3133
3	0.000101	1.7650	59.2297
4	0.000123	1.7325	58.8651
5	0.000171	1.6797	58.8512
6	0.000207	1.6586	55.6763
7	0.000213	1.6578	55.3856
8	0.000213	1.6577	55.3854

NOTE: Convergence criterion met.

Estimation Summary	
Method	Gauss-Newton
Iterations	8
Subiterations	5
Average Subiterations	0.625
R	6.793E-6
PPC(a)	6.159E-6
RPC(a)	0.000687
Object	3.056E-6
Objective	55.38539
Observations Read	18
Observations Used	18
Observations Missing	0

Note: An intercept was not specified for this model.

Source	DF	Sum of Squares	Mean Square	F Value	Approx Pr > F
Model	2	528.5	264.3	76.34	<.0001
Error	16	55.3854	3.4616		
Uncorrected Total	18	583.9			

The NLIN Procedure

Parameter	Estimate	Approx Std Error	Approximate 95% Confidence Limits	
a	0.000213	0.000703	-0.00128	0.00170
b	1.6577	0.5359	0.5216	2.7939

Approximate Correlation Matrix		
	a	b
a	1.0000000	-0.9996996
b	-0.9996996	1.0000000

The REG Procedure
Model: MODEL1
Dependent Variable: pred

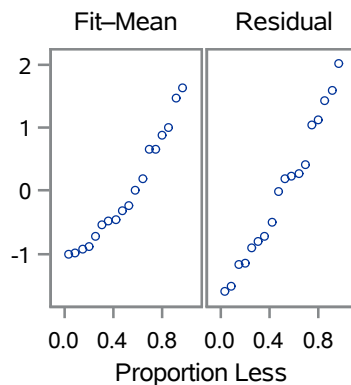
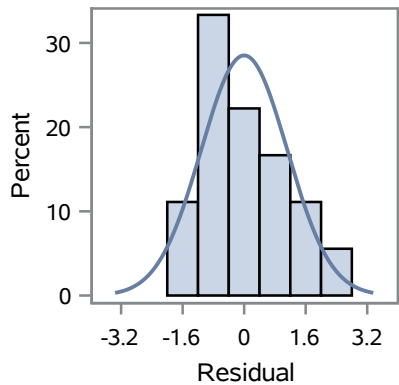
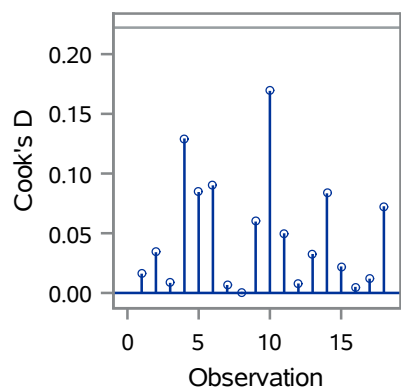
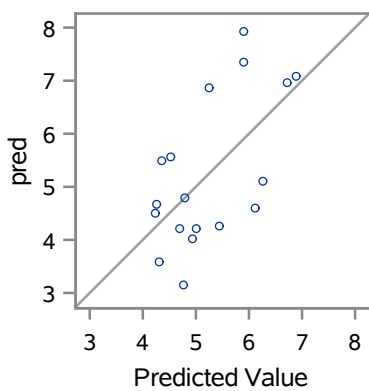
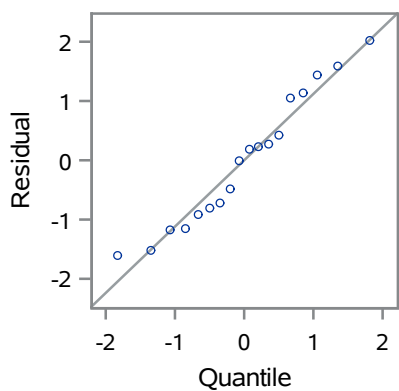
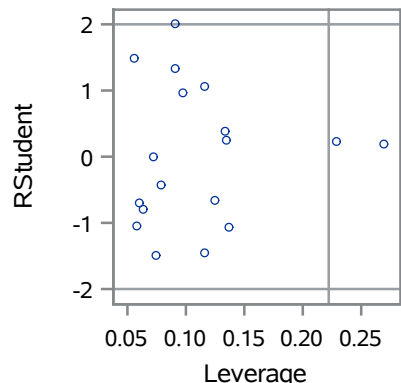
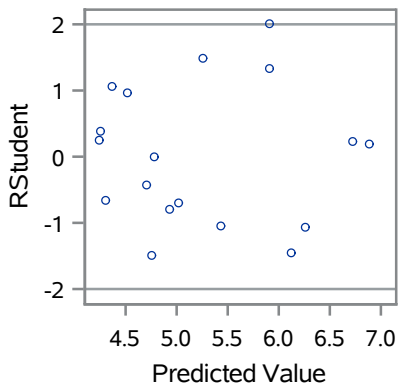
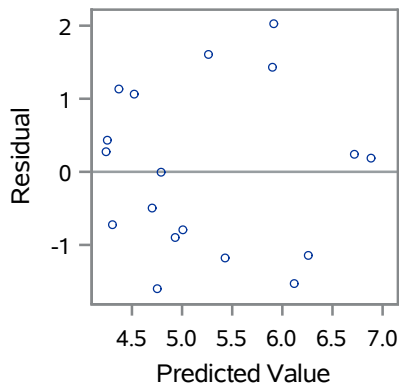
Analysis of Variance					
Source	DF	Sum of Squares	Mean Square	F Value	Pr > F
Model	1	12.64862	12.64862	9.50	0.0071
Error	16	21.29429	1.33089		
Corrected Total	17	33.94291			

Root MSE	1.15364	R-Square	0.3726
Dependent Mean	5.24186	Adj R-Sq	0.3334
Coeff Var	22.00827		

Parameter Estimates						
Variable	Label	DF	Parameter Estimate	Standard Error	t Value	Pr > t
Intercept	Intercept	1	3.25546	0.69937	4.65	0.0003
kgGEST	kgGEST	1	0.37854	0.12279	3.08	0.0071

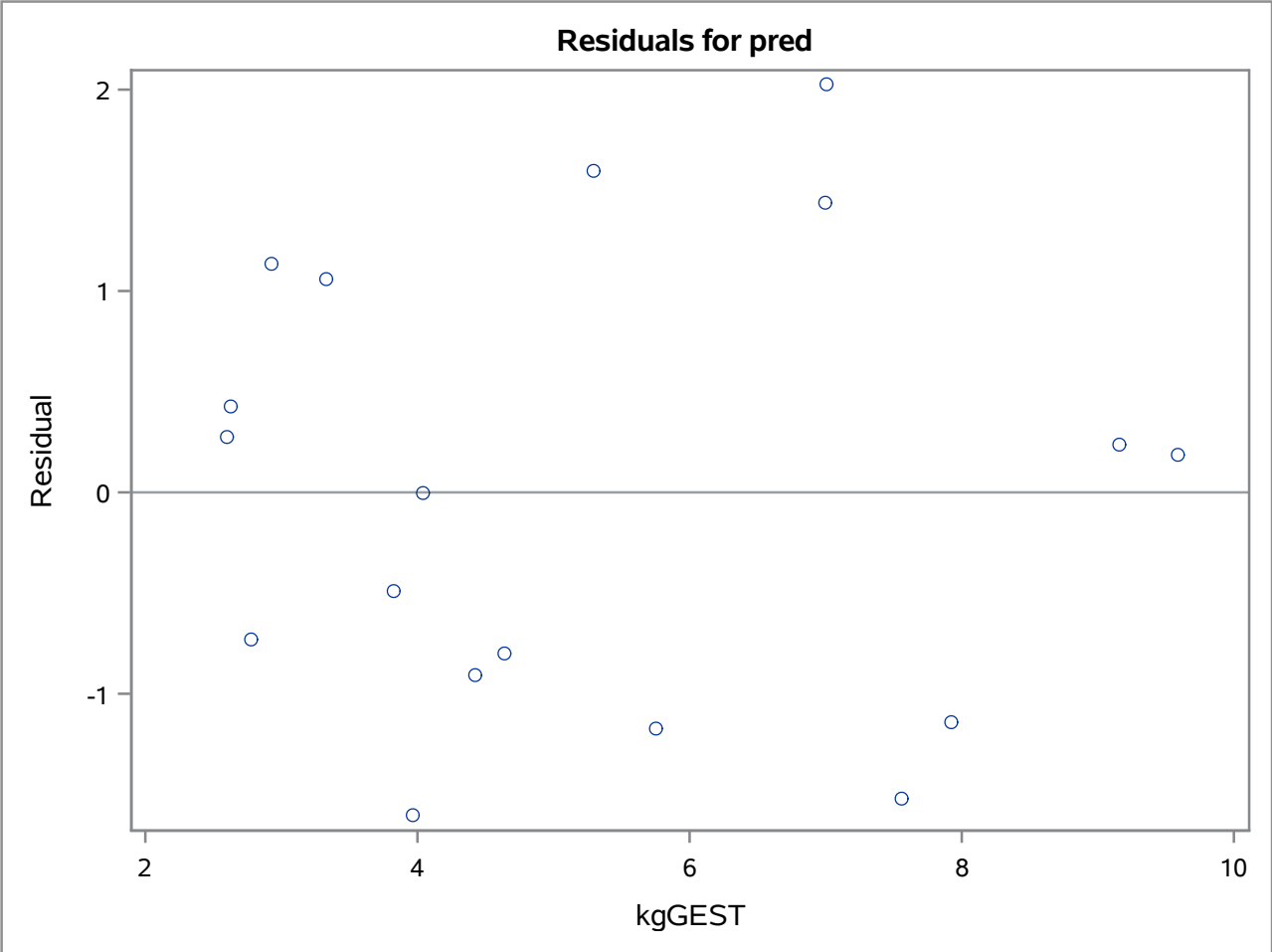
The REG Procedure
Model: MODEL1
Dependent Variable: pred

Fit Diagnostics for pred

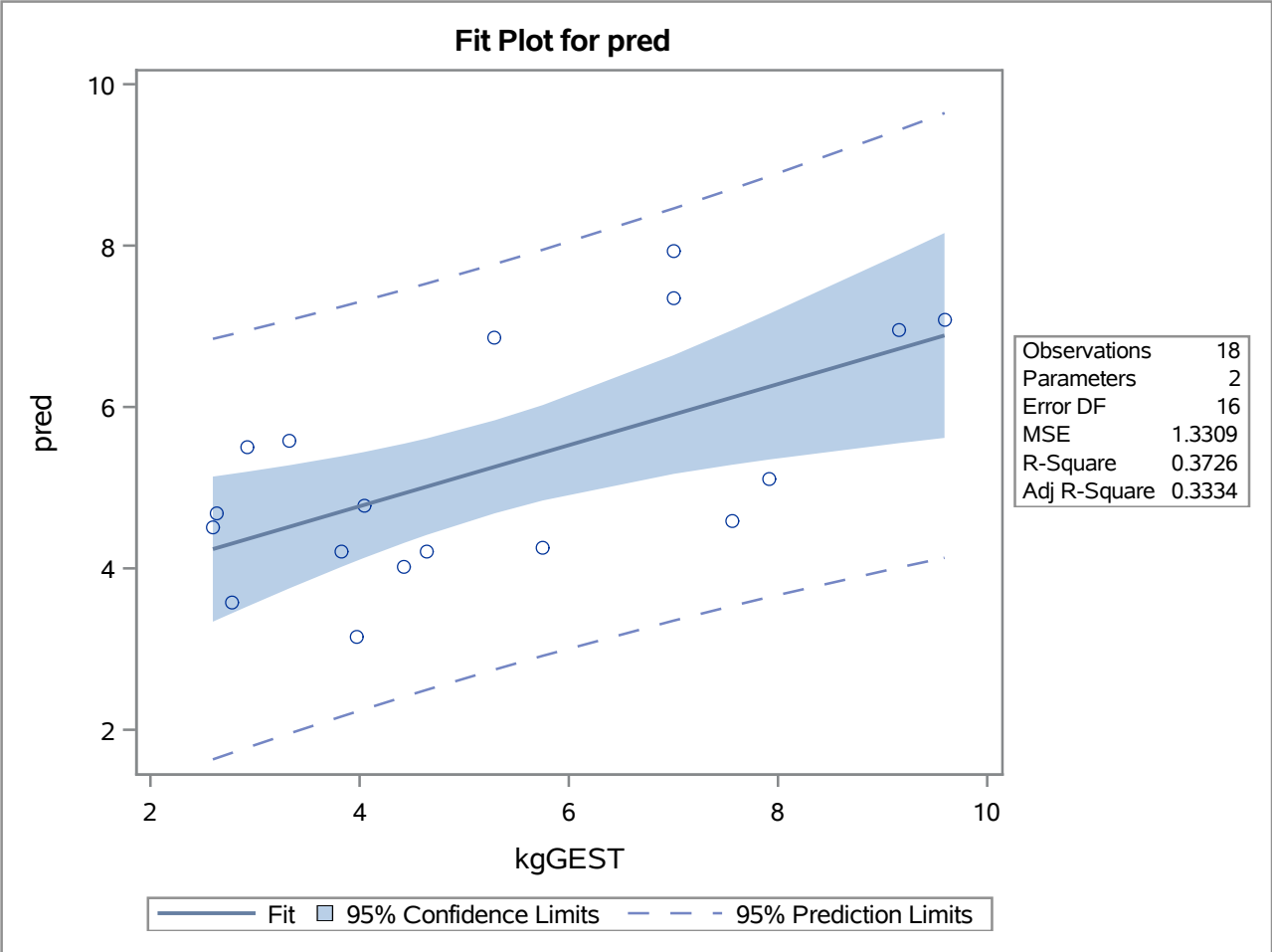


Observations	18
Parameters	2
Error DF	16
MSE	1.3309
R-Square	0.3726
Adj R-Square	0.3334

The REG Procedure
Model: MODEL1
Dependent Variable: pred



The REG Procedure
Model: MODEL1
Dependent Variable: pred



The MEANS Procedure

Analysis Variable : MSE				
N	Mean	Std Dev	Minimum	Maximum
18	3.0769662	2.9315228	0.1158400	8.7880868

The NLIN Procedure
Dependent Variable PC_UTM
Method: Gauss-Newton

Iterative Phase			
Iter	a	b	Sum of Squares
0	0.0810	3.6000	0.000365
1	0.0822	3.5821	0.000331
2	0.0822	3.5822	0.000331

Note: Missing values were generated as a result of performing an operation on missing values. Each place is given by (number of times) AT (statement)/(line):(column).

6 AT	1/143:17
------	----------

NOTE: Convergence criterion met.

Estimation Summary	
Method	Gauss-Newton
Iterations	2
R	4.581E-7
PPC(b)	8.677E-8
RPC(b)	0.000041
Object	2.681E-6
Objective	0.000331
Observations Read	18
Observations Used	9
Observations Missing	9

Note: An intercept was not specified for this model.

Source	DF	Sum of Squares	Mean Square	F Value	Approx Pr > F
Model	2	0.3196	0.1598	3374.87	<.0001
Error	7	0.000331	0.000047		
Uncorrected Total	9	0.3199			

Parameter	Estimate	Approx Std Error	Approximate 95% Confidence Limits	
a	0.0822	0.00517	0.0700	0.0944
b	3.5822	0.2574	2.9736	4.1908

The NLIN Procedure

Approximate Correlation Matrix		
	a	b
a	1.0000000	-0.9811168
b	-0.9811168	1.0000000

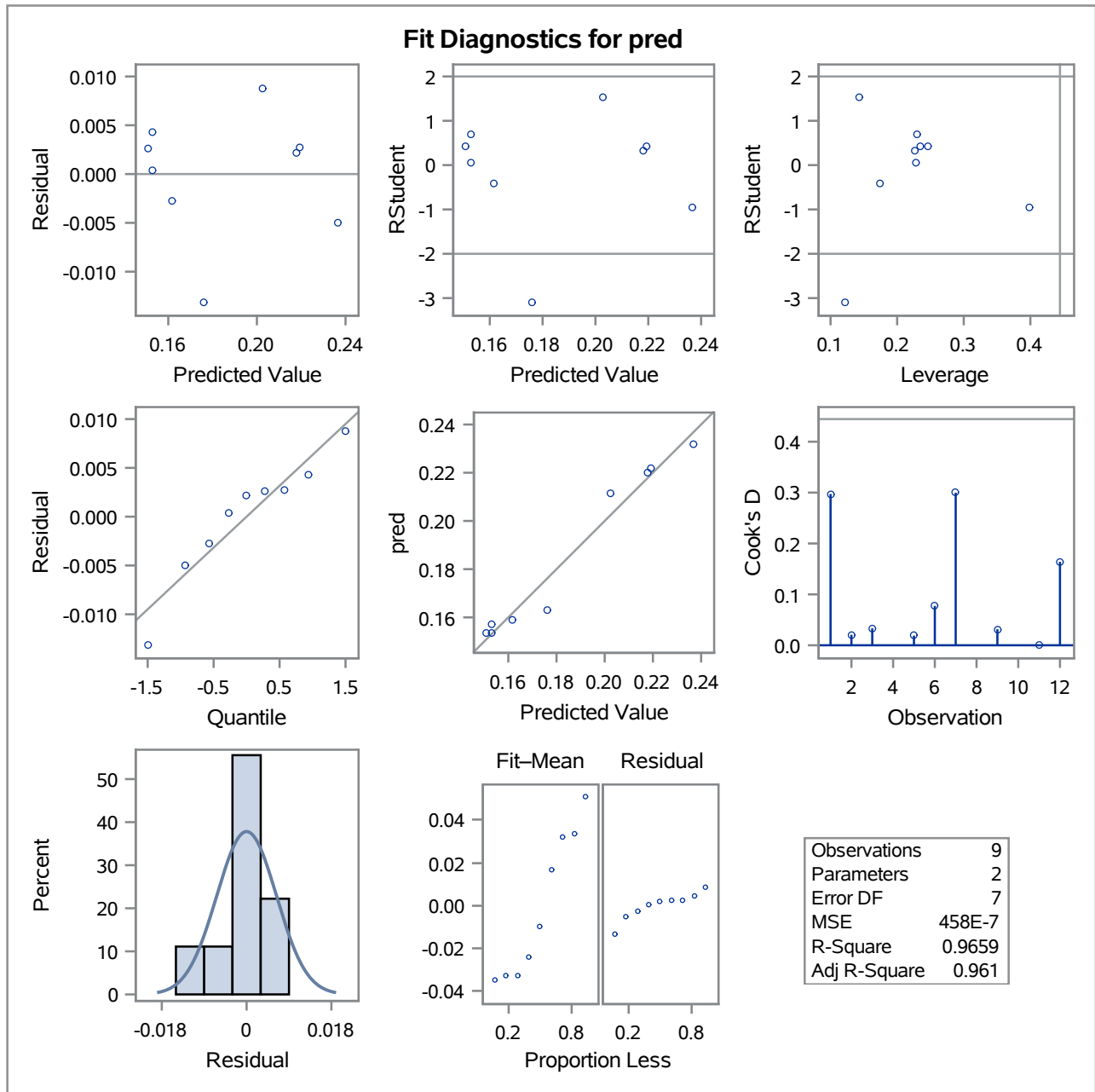
The REG Procedure
Model: MODEL1
Dependent Variable: pred

Analysis of Variance					
Source	DF	Sum of Squares	Mean Square	F Value	Pr > F
Model	1	0.00907	0.00907	198.04	<.0001
Error	7	0.00032061	0.00004580		
Corrected Total	8	0.00939			

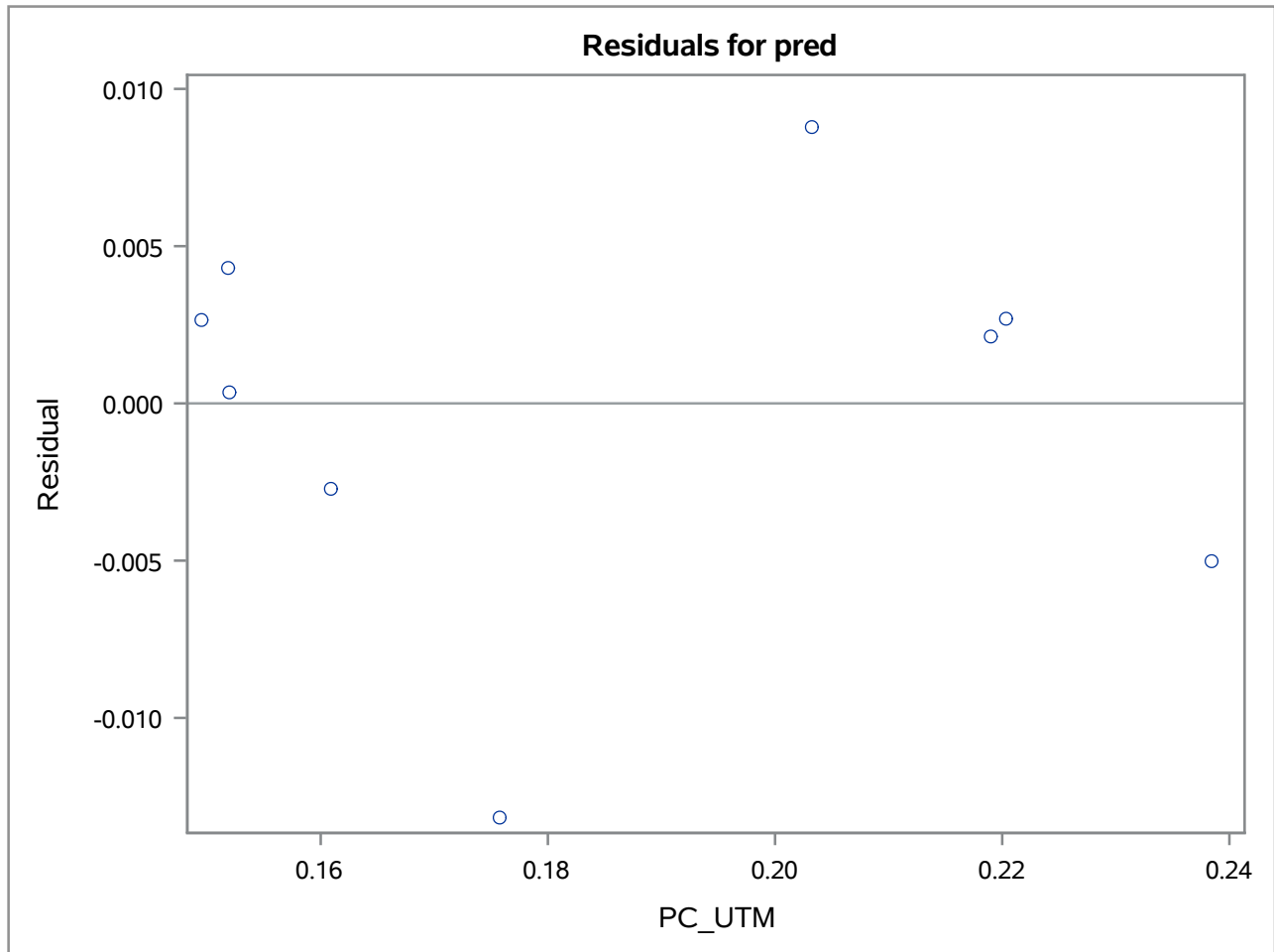
Root MSE	0.00677	R-Square	0.9659
Dependent Mean	0.18564	Adj R-Sq	0.9610
Coeff Var	3.64557		

Parameter Estimates						
Variable	Label	DF	Parameter Estimate	Standard Error	t Value	Pr > t
Intercept	Intercept	1	0.00619	0.01295	0.48	0.6474
PC_UTM	PC_UTM	1	0.96665	0.06869	14.07	<.0001

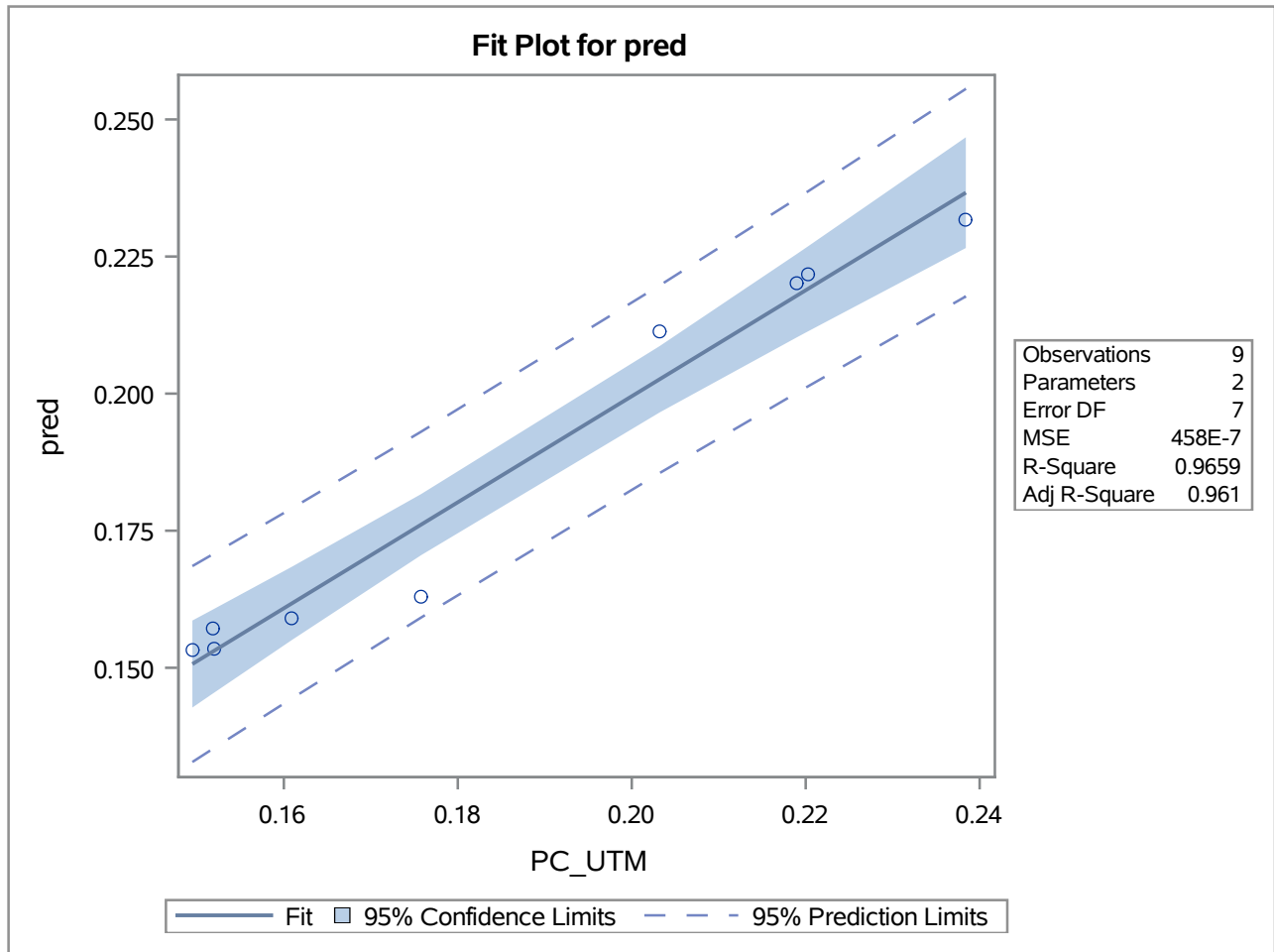
The REG Procedure
 Model: MODEL1
 Dependent Variable: pred



The REG Procedure
Model: MODEL1
Dependent Variable: pred



The REG Procedure
Model: MODEL1
Dependent Variable: pred



The MEANS Procedure

Analysis Variable : MSE				
N	Mean	Std Dev	Minimum	Maximum
9	0.000036823	0.000053372	1.0531557E-6	0.000165138

The NLIN Procedure
 Dependent Variable PC_UTM
 Method: Gauss-Newton

Iterative Phase			
Iter	a	b	Sum of Squares
0	0.0810	3.6000	0.00655
1	0.0856	3.4218	0.00616
2	0.0857	3.4259	0.00616
3	0.0857	3.4258	0.00616

Note: Missing values were generated as a result of performing an operation on missing values. Each place is given by (number of times) AT (statement)/(line):(column).

280 AT	1/164:17
--------	----------

NOTE: Convergence criterion met.

Estimation Summary	
Method	Gauss-Newton
Iterations	3
R	3.745E-7
PPC(b)	1.102E-7
RPC(b)	0.000012
Object	1.972E-9
Objective	0.00616
Observations Read	322
Observations Used	42
Observations Missing	280

Note: An intercept was not specified for this model.

Source	DF	Sum of Squares	Mean Square	F Value	Approx Pr > F
Model	2	1.6113	0.8057	5231.51	<.0001
Error	40	0.00616	0.000154		
Uncorrected Total	42	1.6175			

Parameter	Estimate	Approx Std Error	Approximate 95% Confidence Limits	
a	0.0857	0.00358	0.0784	0.0929
b	3.4258	0.1593	3.1038	3.7479

The NLIN Procedure

Approximate Correlation Matrix		
	a	b
a	1.0000000	-0.9722117
b	-0.9722117	1.0000000

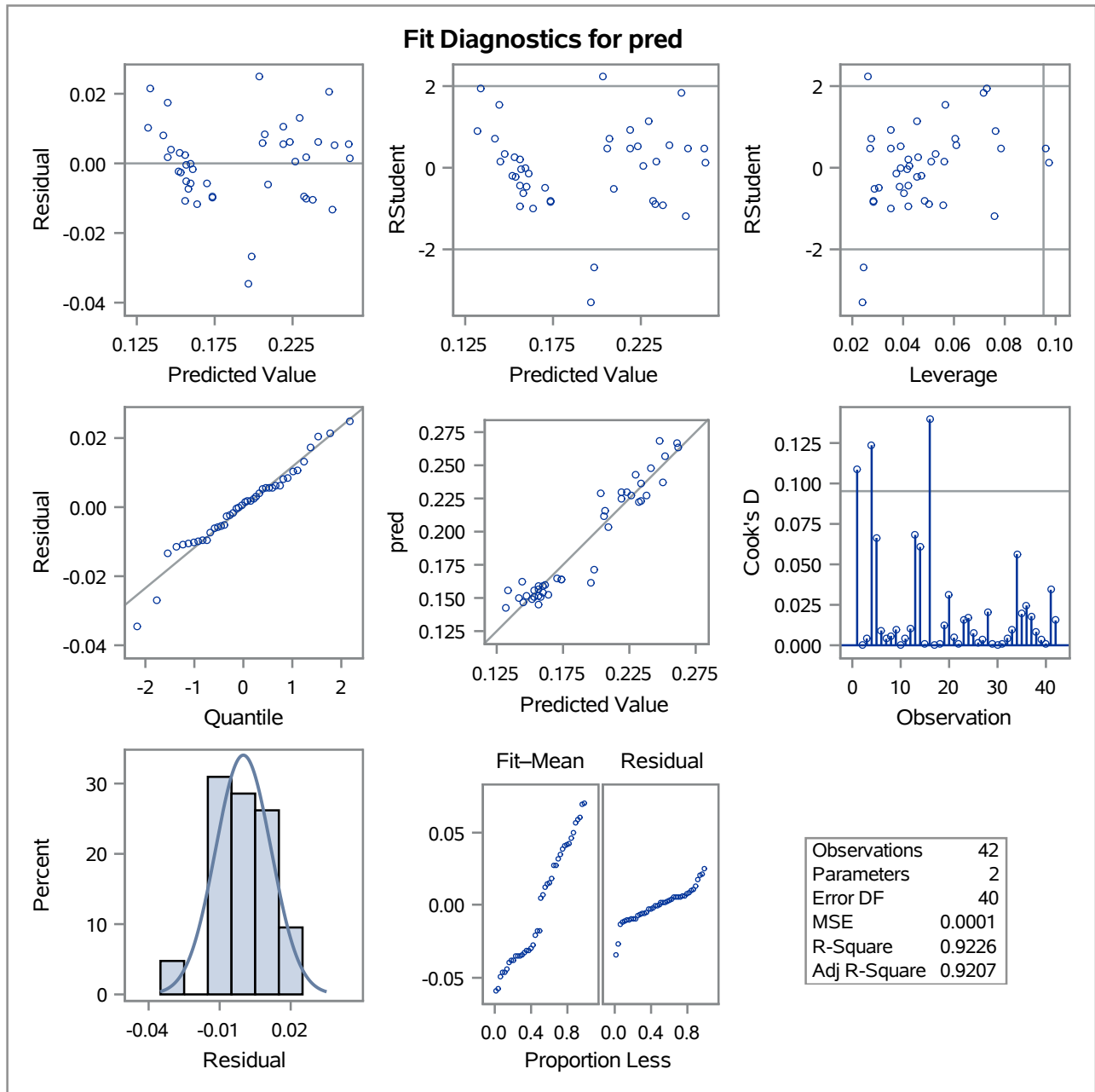
The REG Procedure
 Model: MODEL1
 Dependent Variable: pred

Analysis of Variance					
Source	DF	Sum of Squares	Mean Square	F Value	Pr > F
Model	1	0.06719	0.06719	477.13	<.0001
Error	40	0.00563	0.00014082		
Corrected Total	41	0.07282			

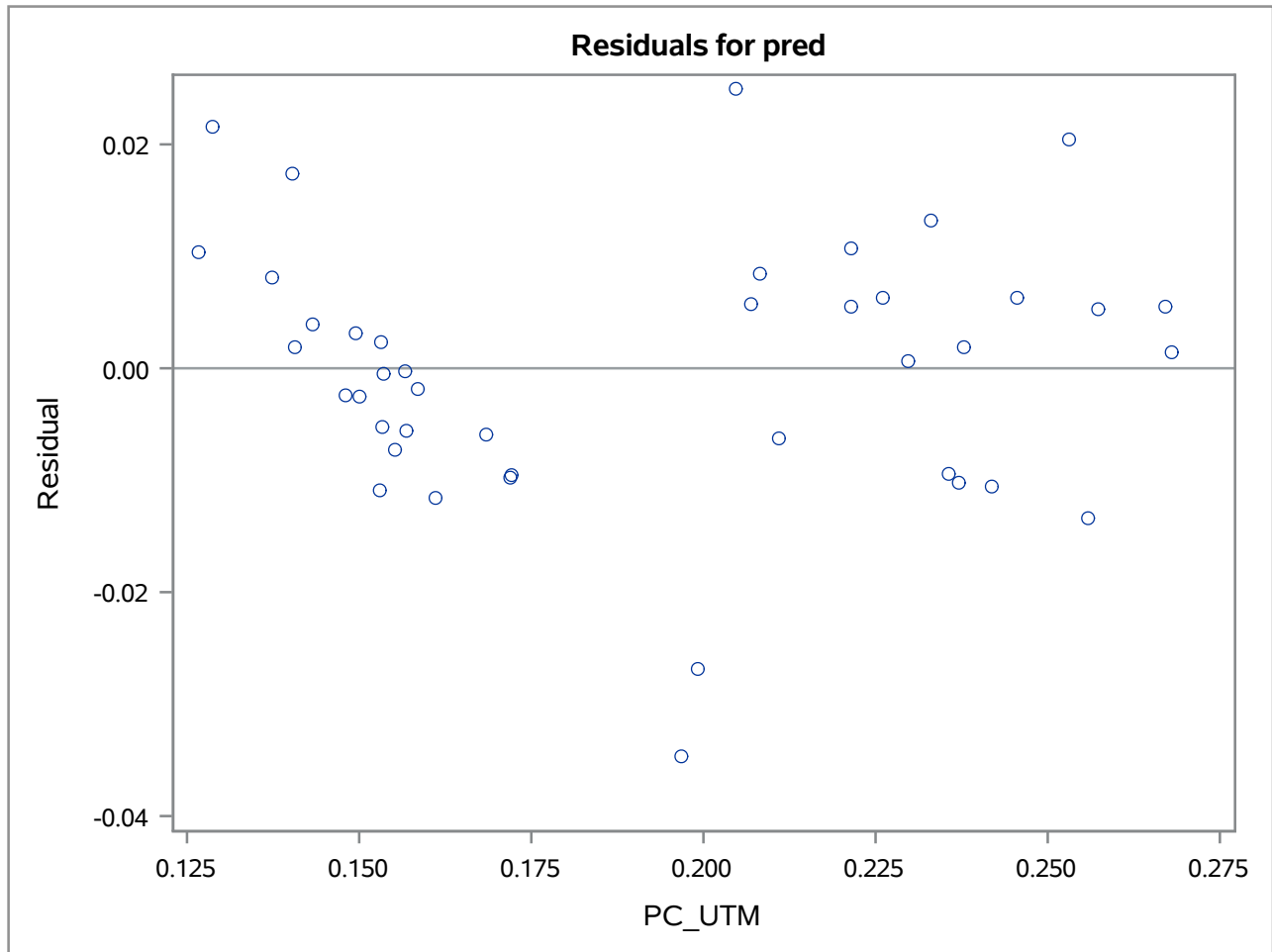
Root MSE	0.01187	R-Square	0.9226
Dependent Mean	0.19139	Adj R-Sq	0.9207
Coeff Var	6.20026		

Parameter Estimates						
Variable	Label	DF	Parameter Estimate	Standard Error	t Value	Pr > t
Intercept	Intercept	1	0.01561	0.00825	1.89	0.0658
PC_UTM	PC_UTM	1	0.91863	0.04206	21.84	<.0001

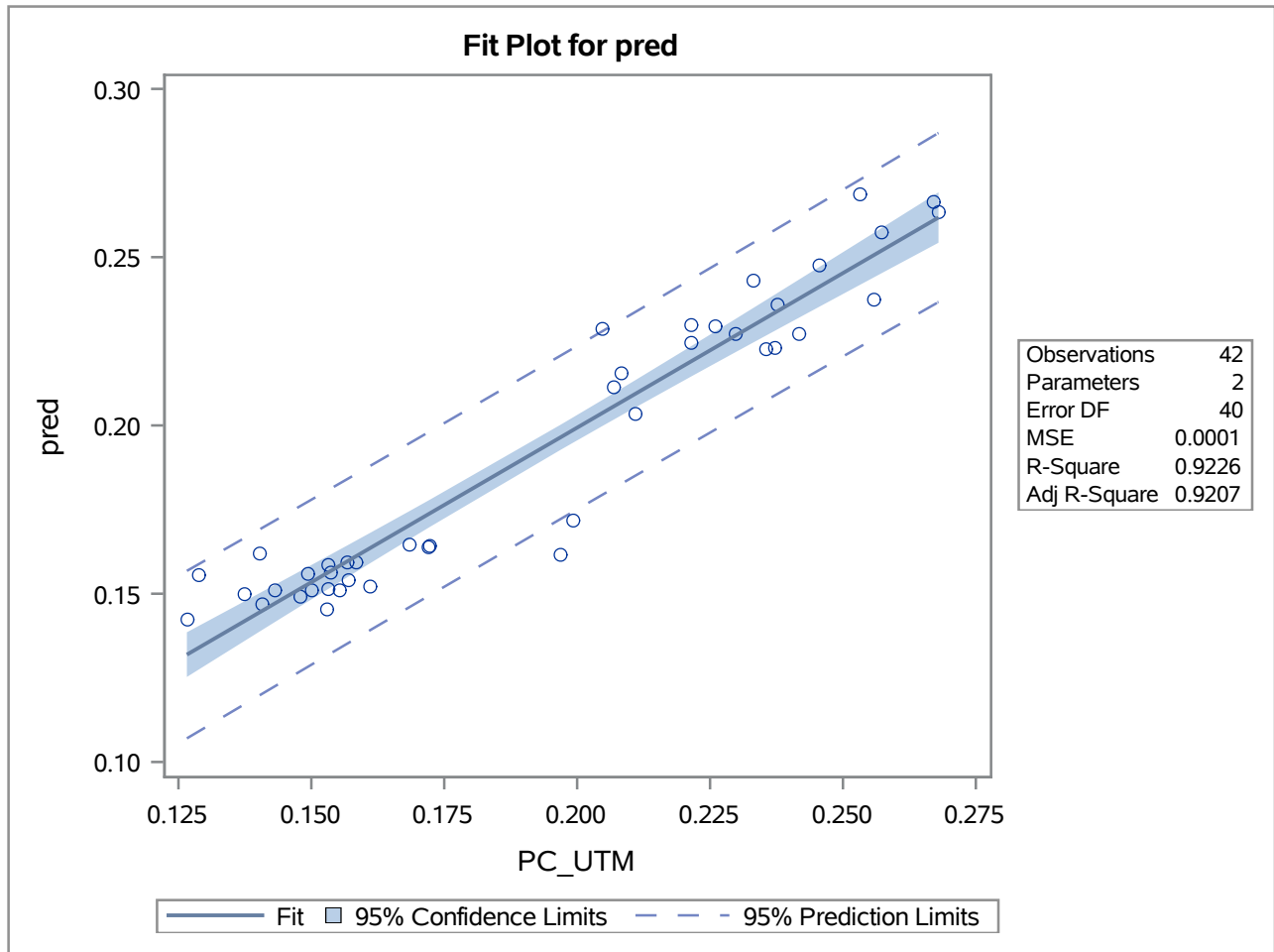
The REG Procedure
 Model: MODEL1
 Dependent Variable: pred



The REG Procedure
Model: MODEL1
Dependent Variable: pred



The REG Procedure
Model: MODEL1
Dependent Variable: pred



The MEANS Procedure

Analysis Variable : MSE				
N	Mean	Std Dev	Minimum	Maximum
42	0.000146667	0.000254507	1.5479249E-9	0.0012314

**The NLIN Procedure
Dependent Variable ERDIA
Method: Gauss-Newton**

Iterative Phase			
Iter	a	b	Sum of Squares
0	0.0600	1.0900	9.6828
1	0.0635	0.6848	1.9067
2	0.0624	0.7231	1.6852
3	0.0624	0.7241	1.6852
4	0.0624	0.7241	1.6852

Note: Missing values were generated as a result of performing an operation on missing values. Each place is given by (number of times) AT (statement)/(line):(column).

6 AT	1/186:20
------	----------

NOTE: Convergence criterion met.

Estimation Summary	
Method	Gauss-Newton
Iterations	4
R	3.198E-7
PPC(b)	6.608E-8
RPC(b)	9.204E-6
Object	1.974E-9
Objective	1.685157
Observations Read	18
Observations Used	12
Observations Missing	6

Note: An intercept was not specified for this model.

Source	DF	Sum of Squares	Mean Square	F Value	Approx Pr > F
Model	2	252.5	126.3	749.33	<.0001
Error	10	1.6852	0.1685		
Uncorrected Total	12	254.2			

Parameter	Estimate	Approx Std Error	Approximate 95% Confidence Limits	
a	0.0624	0.00161	0.0588	0.0660
b	0.7241	0.0473	0.6187	0.8295

The NLIN Procedure

Approximate Correlation Matrix		
	a	b
a	1.0000000	0.0605022
b	0.0605022	1.0000000

The REG Procedure
 Model: MODEL1
 Dependent Variable: pred

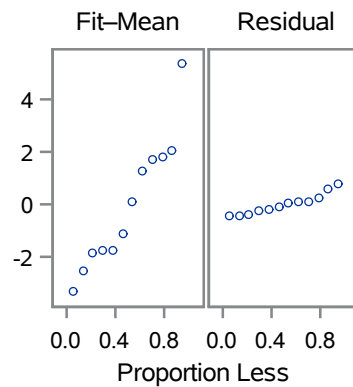
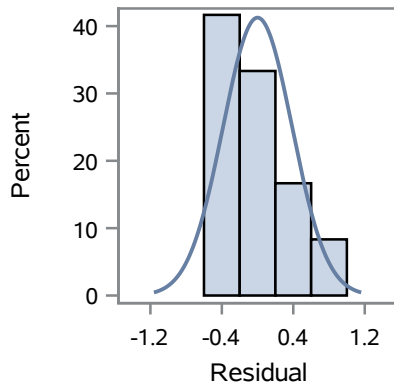
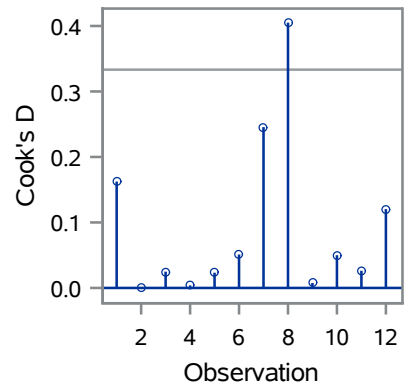
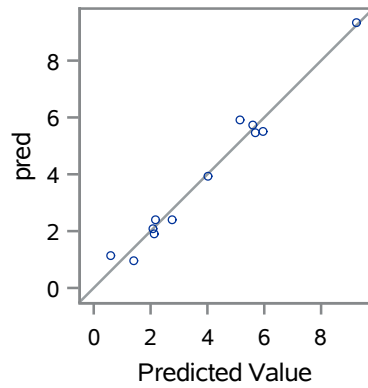
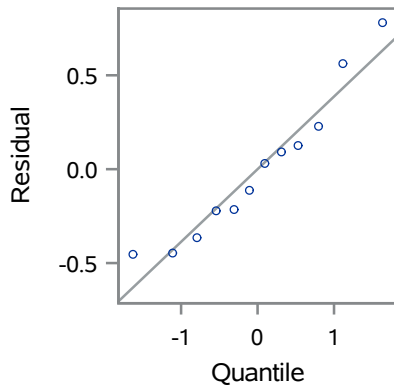
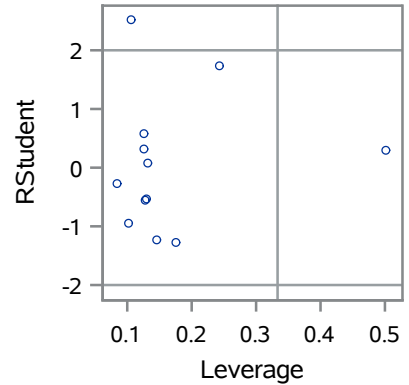
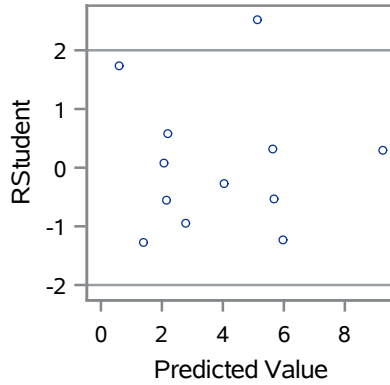
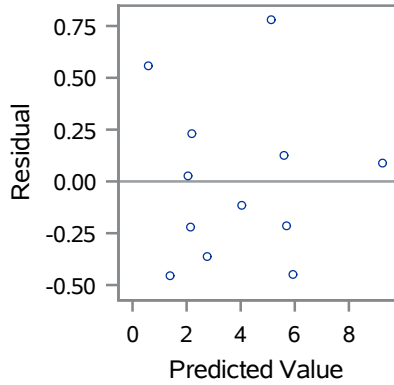
Analysis of Variance					
Source	DF	Sum of Squares	Mean Square	F Value	Pr > F
Model	1	68.38751	68.38751	415.50	<.0001
Error	10	1.64591	0.16459		
Corrected Total	11	70.03342			

Root MSE	0.40570	R-Square	0.9765
Dependent Mean	3.89992	Adj R-Sq	0.9741
Coeff Var	10.40271		

Parameter Estimates						
Variable	Label	DF	Parameter Estimate	Standard Error	t Value	Pr > t
Intercept	Intercept	1	0.09109	0.22052	0.41	0.6883
ERDIA	ERDIA	1	0.97660	0.04791	20.38	<.0001

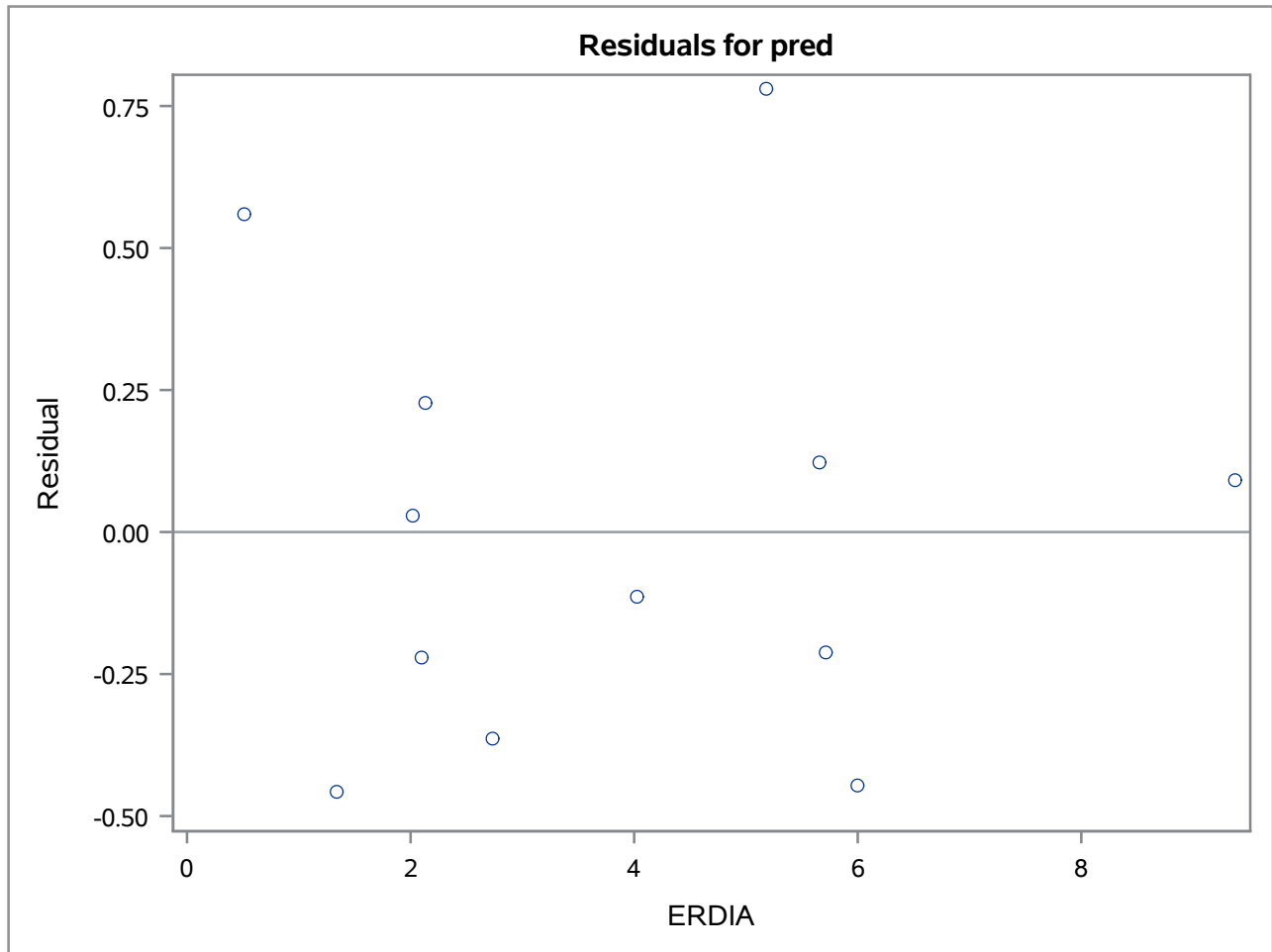
The REG Procedure
 Model: MODEL1
 Dependent Variable: pred

Fit Diagnostics for pred

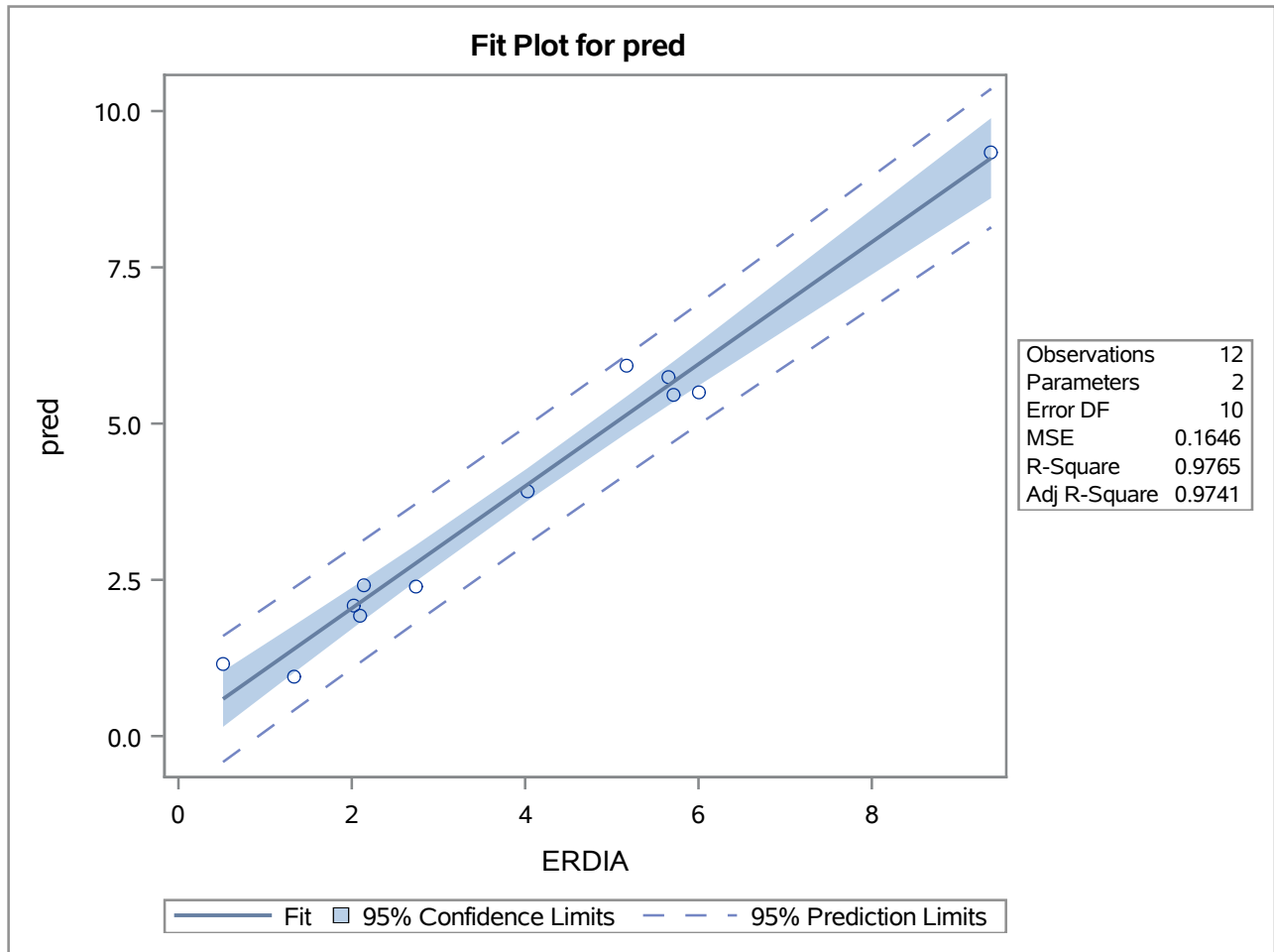


Observations	12
Parameters	2
Error DF	10
MSE	0.1646
R-Square	0.9765
Adj R-Square	0.9741

The REG Procedure
Model: MODEL1
Dependent Variable: pred



The REG Procedure
Model: MODEL1
Dependent Variable: pred



The MEANS Procedure

Analysis Variable : MSE				
N	Mean	Std Dev	Minimum	Maximum
12	0.1404297	0.1800978	0.0014393	0.5631554