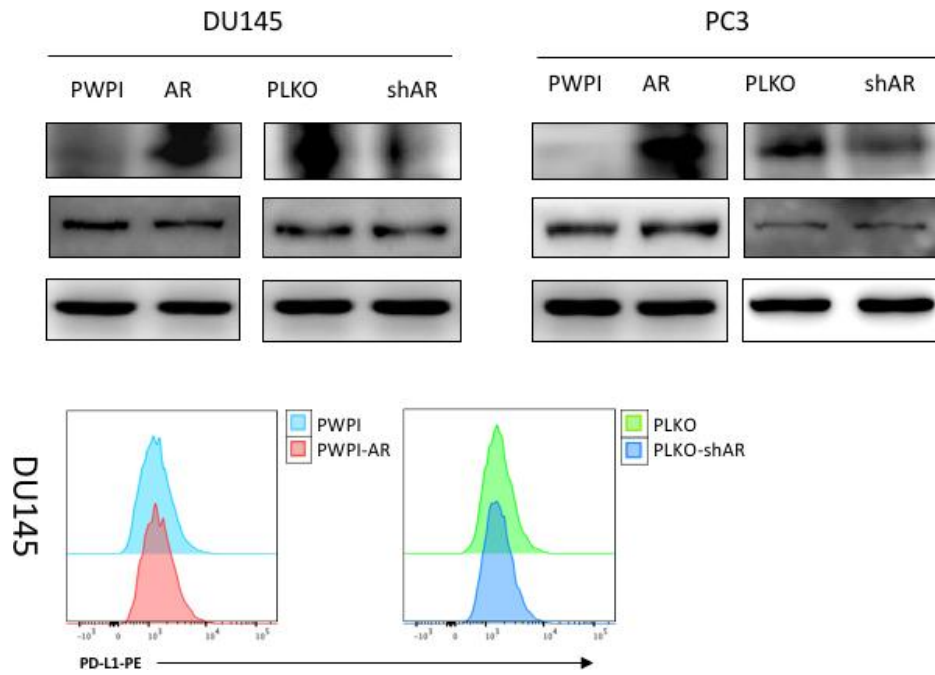
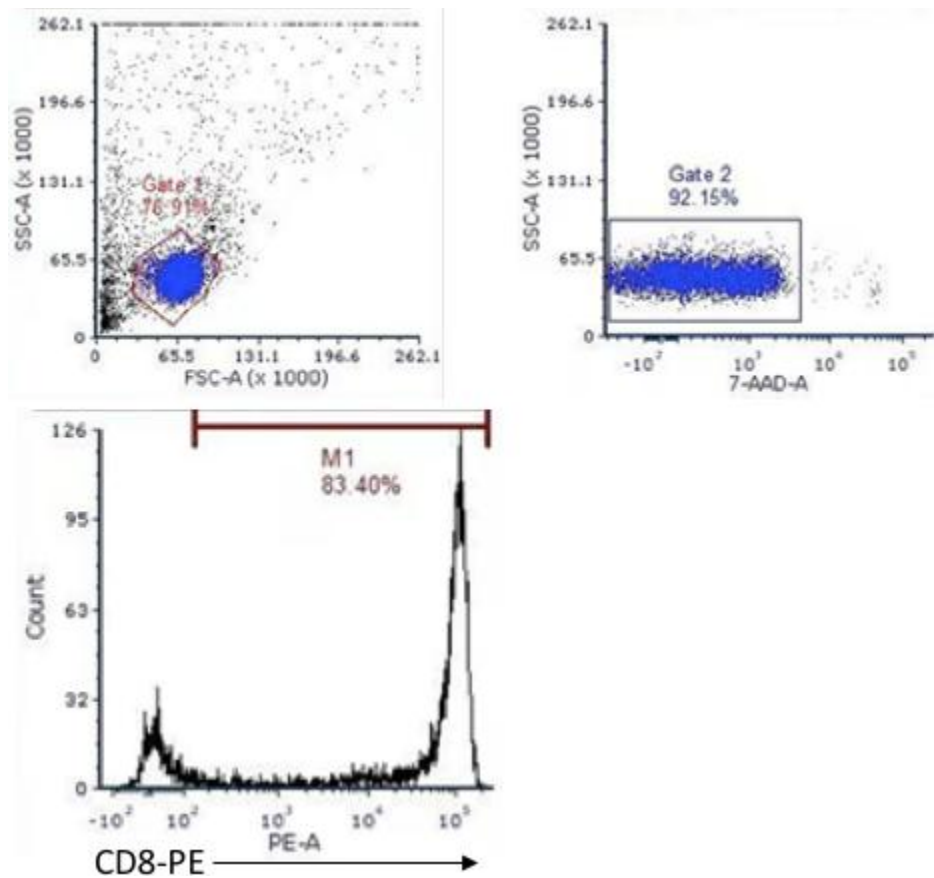


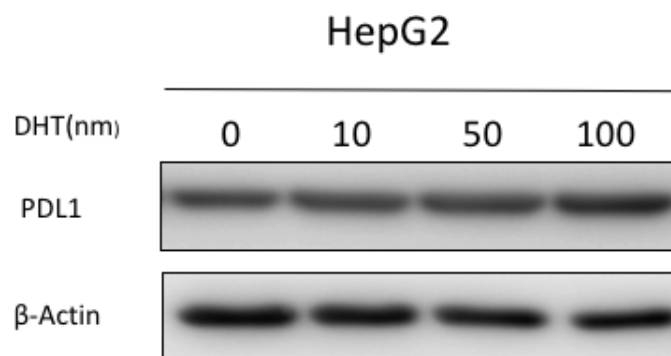
SUPPLEMENTARY FIGURES



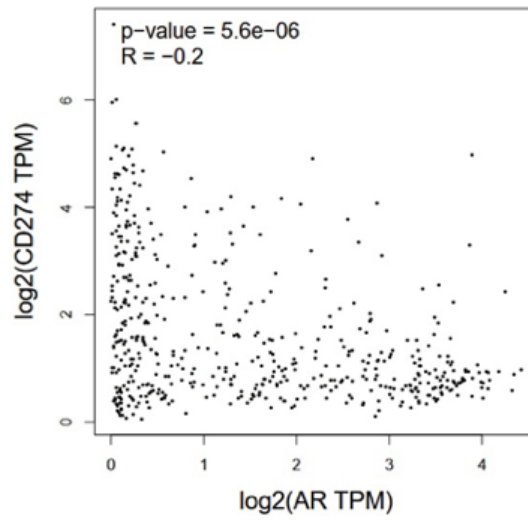
Supplementary Figure 1. Changes of PD-L1 in prostate cell lines with difference AR expression tested by western blot and flow cytometry.



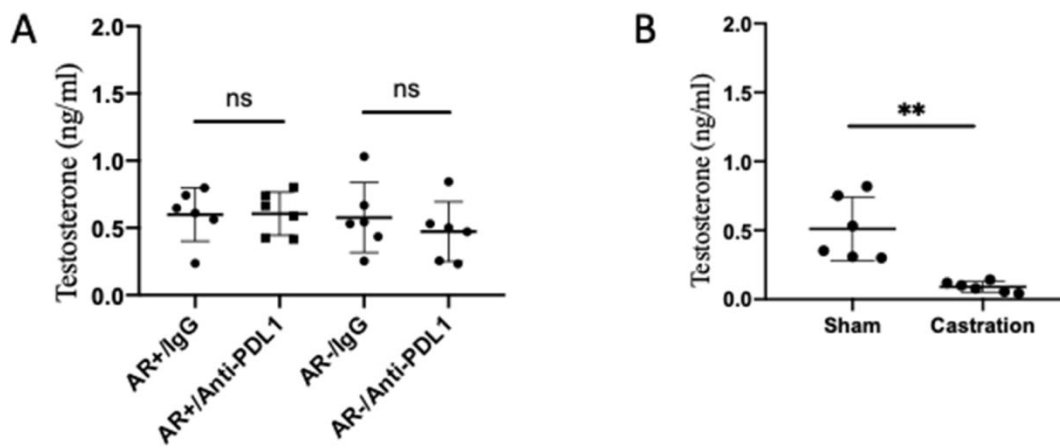
Supplementary Figure 2. The purity of extracted CD8⁺ T cells was identified by flow cytometry. 7-AAD buffer was used to distinguish between dead and living cells and CD8⁺ T cell was stained by CD8-PE antibody.



Supplementary Figure 3. The castration assay was performed in HepG2 cell. PD-L1 expression was tested by western blot.



Supplementary Figure 4. Based on TCGA database, the correlation between AR and PD-L1 was verified in GEPIA (<http://gepia.cancer-pku.cn/>).



Supplementary Figure 5. The plasma androgen level of mice was measured using ELISA Kit. (A) The plasma androgen level between the four groups of the mice orthotopic tumor model. (B) The plasma androgen level of the sham-operated mice and castrated mice.