

Supplementary information, Figure S2

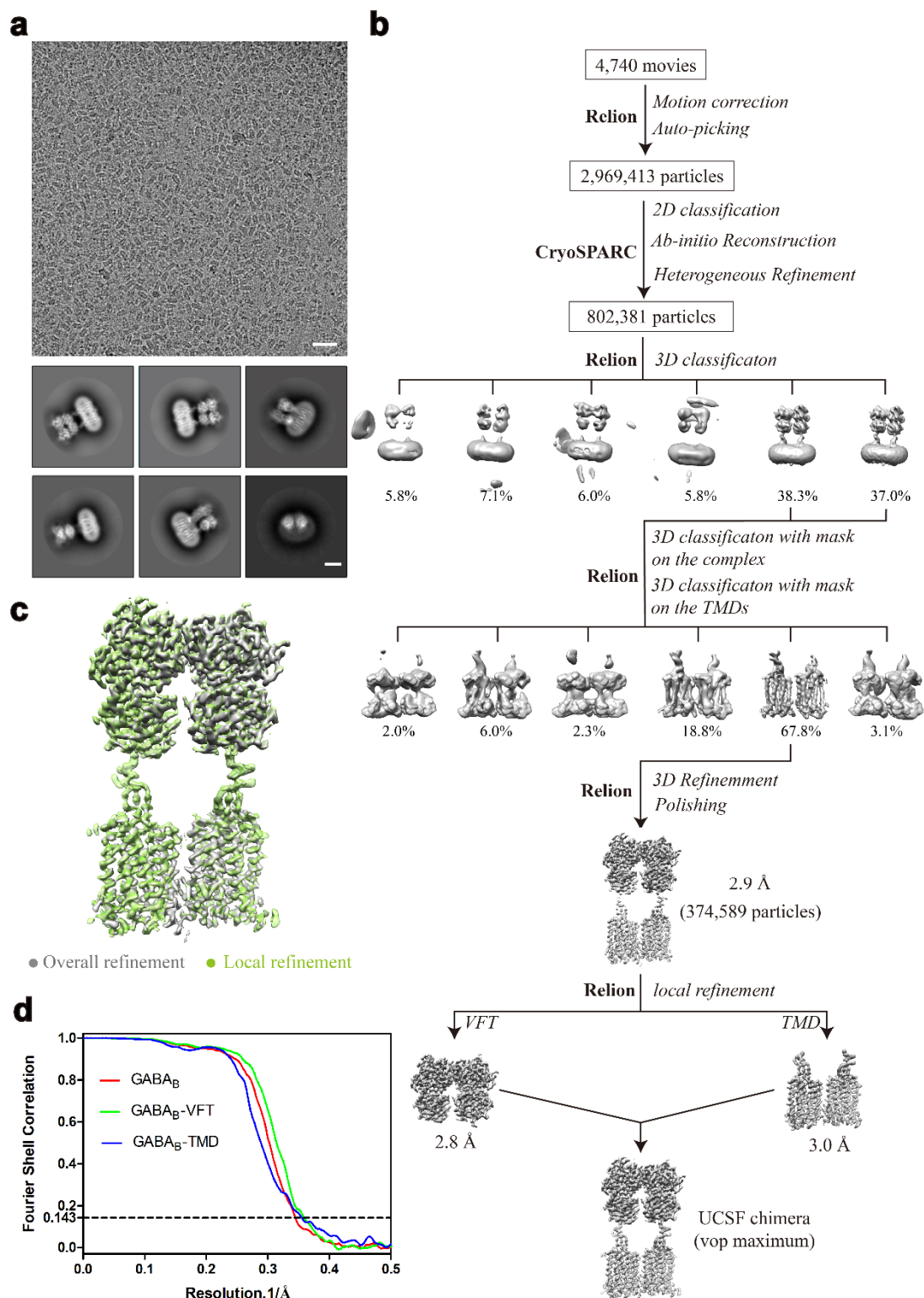


Fig. S2 Single-particle cryo-EM of the CGP54626-bound GABA_B receptor. **a** Cryo-EM micrograph (scale bar: 30 nm) and representative two-dimensional class averages

of the inactive GABA_B receptor in LMNG detergent micelles (scale bar: 5 nm). **b** Flow chart of cryo-EM data processing. Details are described in Method section. **c** Comparison of the overall refined map and the locally refined composite map. The locally refined composite map exhibits a slight improvement of the TMs density and adopts almost the identical conformation with the overall refined map. **d** Gold-standard Fourier shell correlation (FSC) curves of overall refined receptor and the locally refined VFT and TMD.