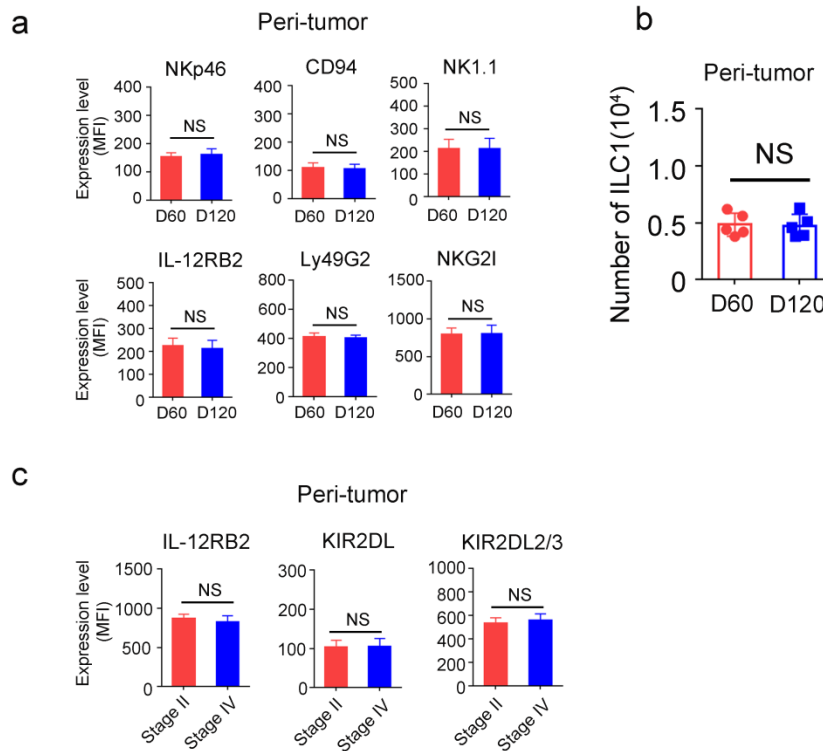


## Supplementary information Fig. S2.



**Supplementary information Fig. S2. Analysis of ILC1s in peri-tumor tissues.** (a) Surface markers of ILC1s in peri-tumors from AOM/DSS treatment mice were analyzed by flow cytometry. Peri-tumor tissues were isolated from indicated days after AOM/DSS treatment. Medians of fluorescence intensity (MFI) of each cell were calculated and shown as means±SD. NS, not significant by Two-tailed unpaired Student's *t*-test. *n*=5 for each group. (b) Flow cytometry analysis of ILC1s from peri-tumor tissues of indicated days. ILC1 numbers per cm<sup>3</sup> colon were calculated and shown as means±SD. NS, not significant by Two-tailed unpaired Student's *t*-test. *n*=5 for each group. (c) Indicated surface markers of ILC1s from human colon peri-tumor tissues of indicated stages were analyzed by flow cytometry. Medians of fluorescence intensity (MFI) of each cell were calculated and shown as means±SD. NS, not significant by Two-tailed unpaired Student's *t*-test. *n*=4 for each group. Data are representative of at least four independent experiments.