

Supplementary Information

Combined PLT and NE to predict the prognosis of patients with locally advanced cervical cancer

Han Wang^{1&}, Wen-Ming Chen^{2&}, Yong-Heng Zhou^{1&}, Jian-Ping Shi³, Yue-qing Huang⁴, Wen-Jie Wang^{3*}

¹Department of Oncology, Jining Cancer Hospital, Jining, Shandong, 272000, P.R. China

²Department of Oncology, Jining No. 1 People's Hospital; Affiliated Jining NO.1 People's Hospital of Jining Medical University, Jining, Shandong, 272011, P.R. China.

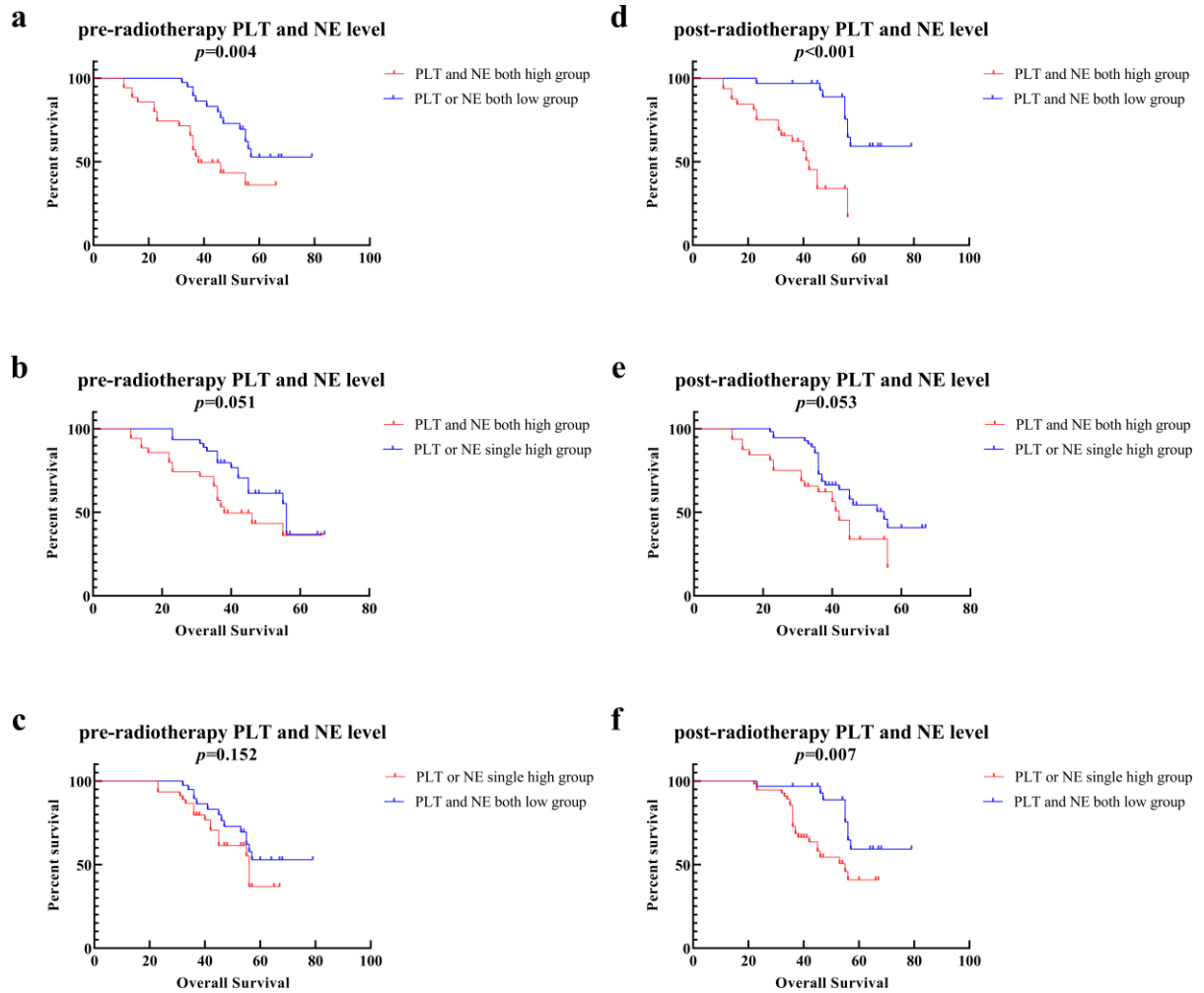
³Department of Radio-Oncology, The Affiliated Suzhou Hospital of Nanjing Medical University, Suzhou, Jiangsu, 215001, P.R. China

⁴Department of General Practice, The Affiliated Suzhou Hospital of Nanjing Medical University, Suzhou, Jiangsu 215001, P. R. China

&Authors contributed equally to this work

*Corresponding to:

Wen-Jie Wang M.D., E-mail: suda_wangwenjie@163.com, Department of Radio-Oncology, the Affiliated Suzhou Hospital of Nanjing Medical University, Suzhou, Jiangsu 215001, P.R. China



Supplementary Figure S1. The relationships between different groups of PLT and NE levels according to pre-radiotherapy and post-radiotherapy with overall survival (OS).

- (a) The OS between pre-radiotherapy PLT and NE both high group with PLT and NE both low group.
- (b) The OS between pre-radiotherapy PLT and NE both high group with PLT or NE single high group.
- (c) The OS between pre-radiotherapy PLT and NE single high group with PLT and NE both low group.
- (d) The OS between post-radiotherapy PLT and NE both high group with PLT and NE both low group.
- (e) The OS between post-radiotherapy PLT and NE both high group with PLT or NE single high group.
- (f) The OS between post-radiotherapy PLT and NE single high group with PLT and NE both low group.