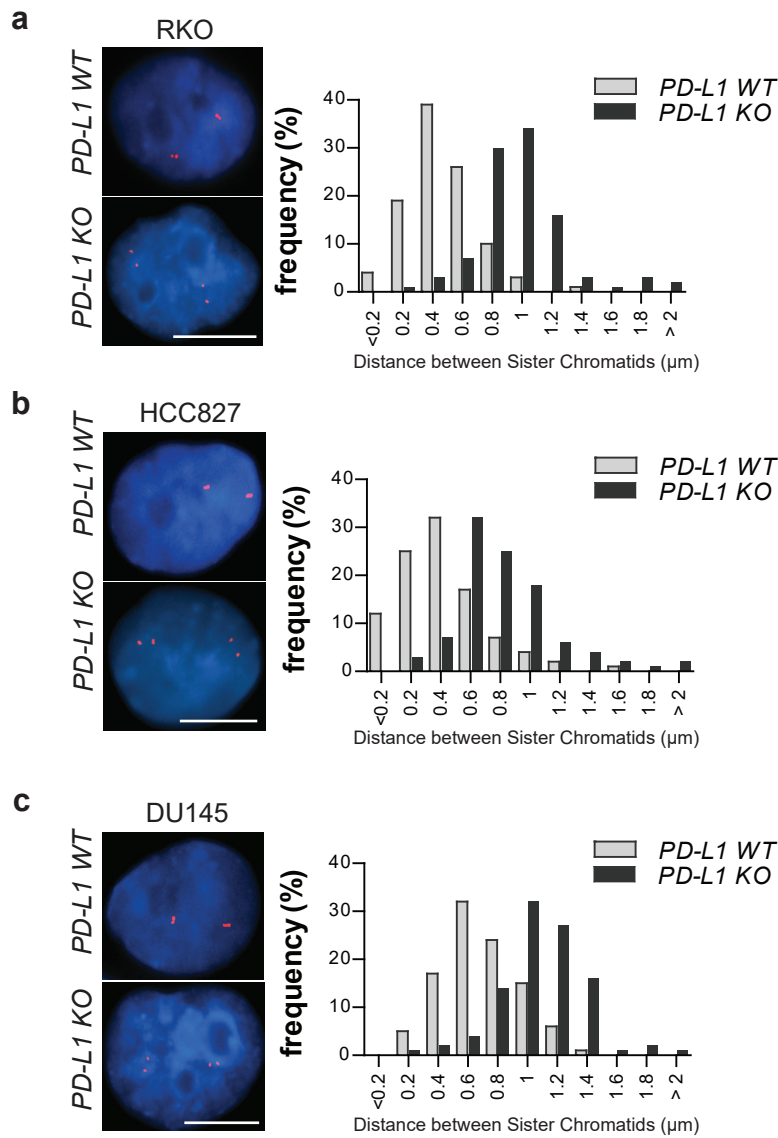


Supplementary Information, Fig. S3.



Supplementary Information, Fig. S3. PD-L1 regulates sister chromatid cohesion in different cancer cell lines.

(a-c) PD-L1 depletion impairs sister chromatid cohesion. *myb* gene distance between paired FISH signals in wildtype (WT) or *PD-L1* knockout (KO) RKO, HCC837, and DU145 cells. Bar: 10 μm .