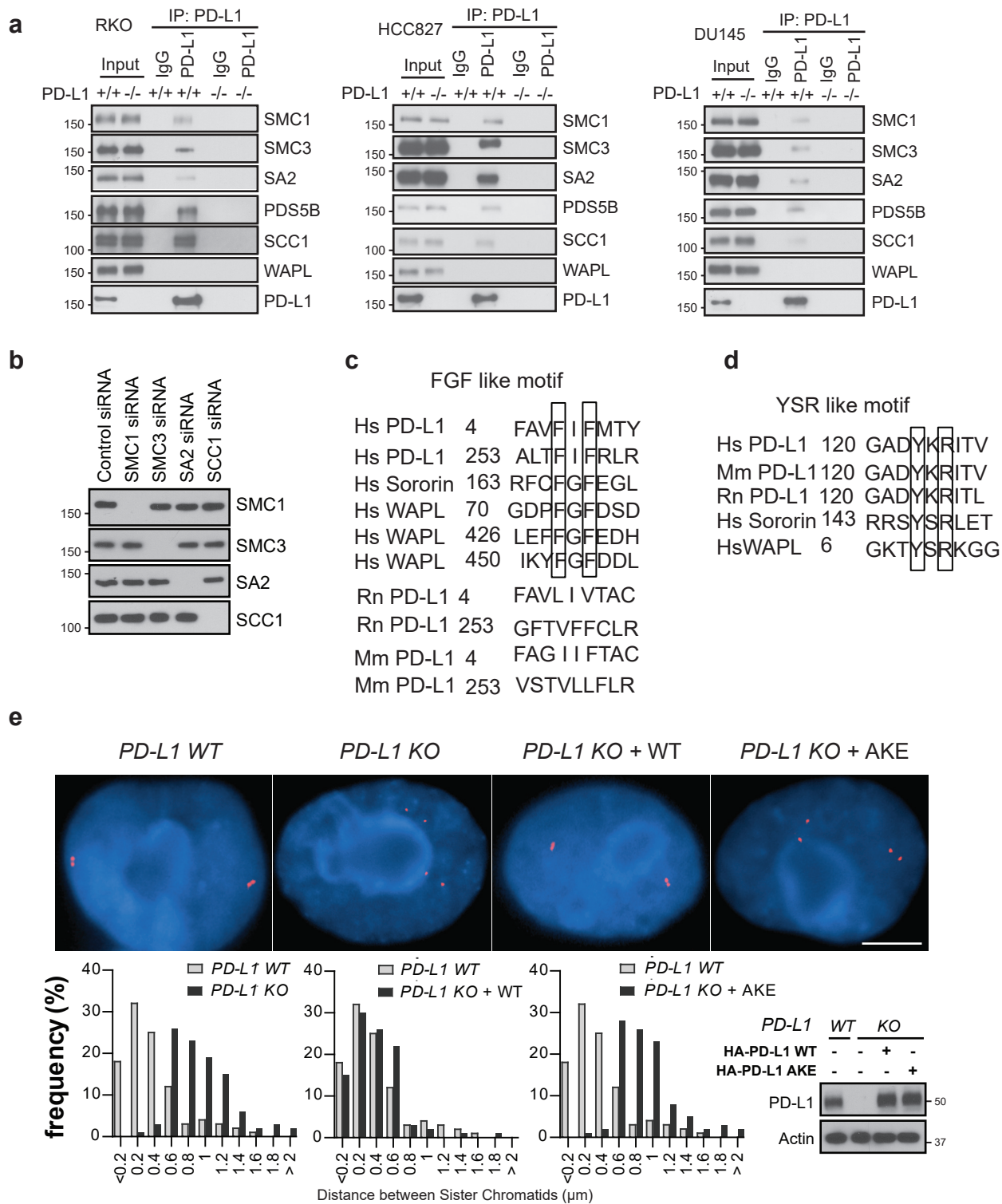


Supplementary Information, Fig. S4.



Supplementary Information, Fig. S4. PD-L1 interacts with the cohesin complex.

(a) Cohesin subunits can be co-immunoprecipitated with endogenous nuclear PD-L1 in RKO, HCC827 and DU 145 control (*WT*) cells, but not the knockout cells (KO). (b) The protein levels of individual cohesin subunits in the cell lysates isolated from cells transfected with siRNAs targeting individual cohesion subunit in the presence of MG132. (c) Analysis of FGF like motif in PD-L1 protein. (d) Analysis of YSR like motif in PD-L1 protein. (e) *PD-L1* knockout impairs sister chromatid cohesion; reintroduction of WT, but not the AKE mutant can rescue the defect in sister chromatid cohesion. *Myb* gene probe was used and the distance between paired FISH signals was measured and quantified. Bar: 5 μm . Data are presented as mean \pm s.d., and were independently replicated three times.