

Figure S1. ESI(+)-MS spectra of met hemoglobin before and after ascorbate treatment (in ammonium acetate buffer, pH 5), in the whole m/z region as well as in the low m/z region. The  $\alpha$  and  $\beta$  subunits are indicated along with the corresponding charge. The extra peaks in the low m/z region are indicated with \* and their charge.

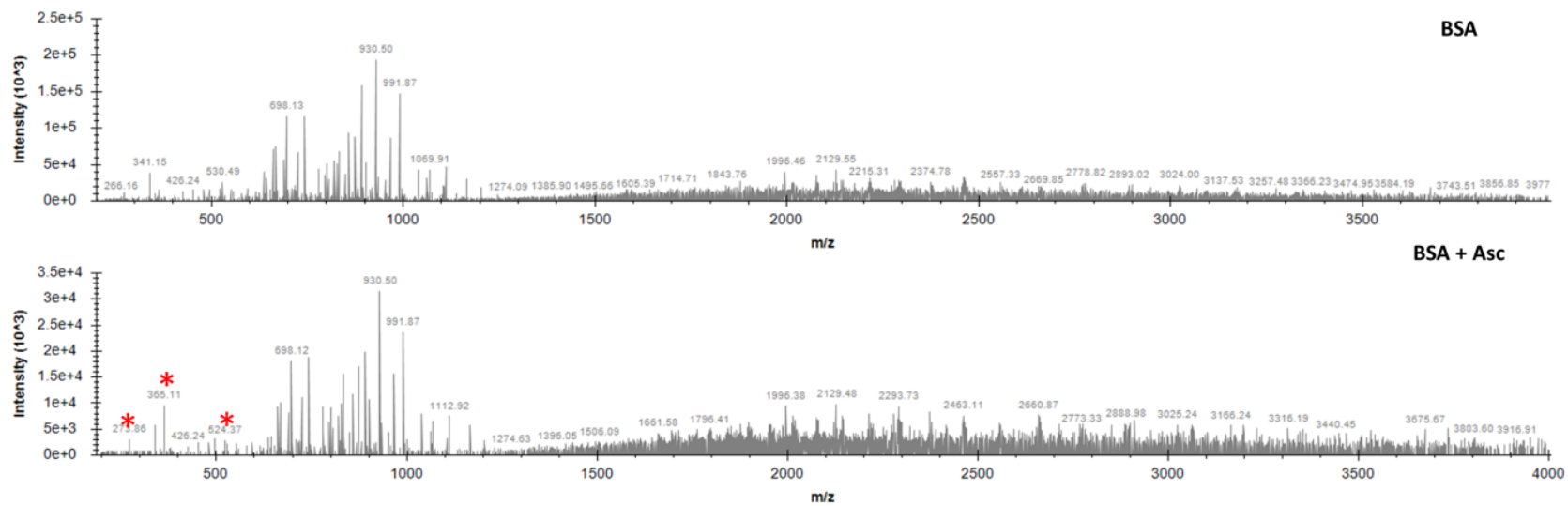


Figure S2. ESI(+)-MS spectra of albumin before and after ascorbate treatment (in ammonium acetate buffer, pH 5). The extra peaks in the low m/z region are indicated with \* and their charge.