

Seed Oil from Mediterranean Aromatic and Medicinal Plants of the Lamiaceae as a Source of Bioactive Components with Nutritional

María Quílez¹, Federico Ferreres², Santiago López-Miranda², Eva Salazar², María J. Jordán^{1*}

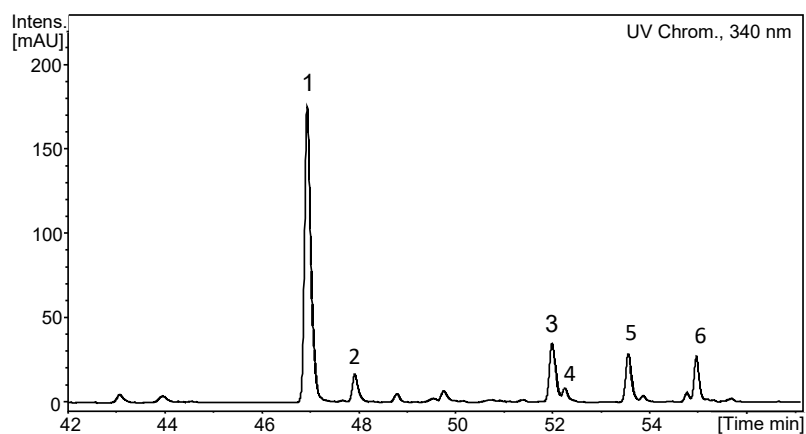


Figure S1. HPLC-UV (340 nm) profile of polyphenolic compounds identified in *L. latifolia* oil seeds.

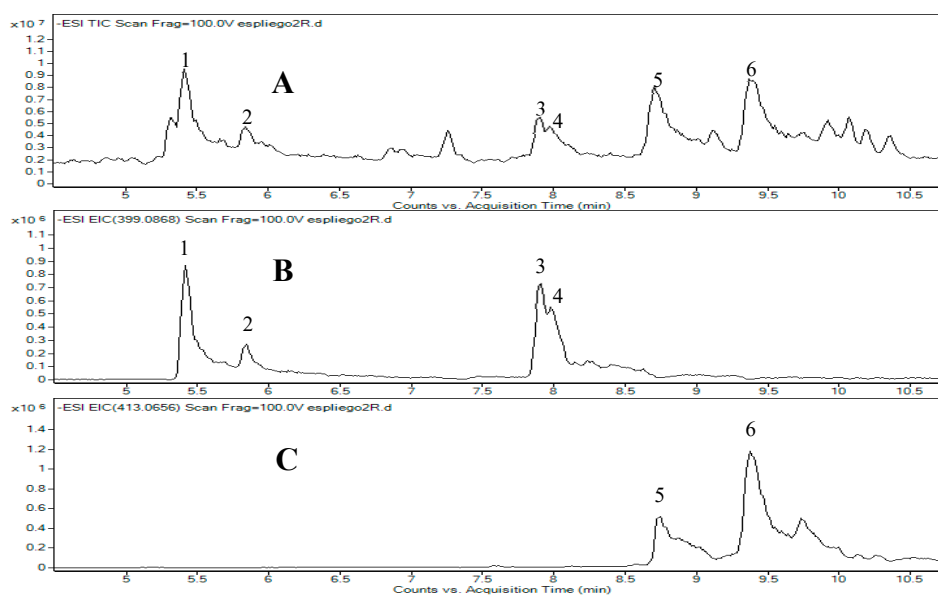


Figure S2. A) Total Ion Chromatogram (TIC) of phenolic compounds from *L. latifolia* oil seeds. Extracted Ion Chromatogram (EIC) of [M-H]⁻ (m/z): B) 399.0868. C) 413.0656.