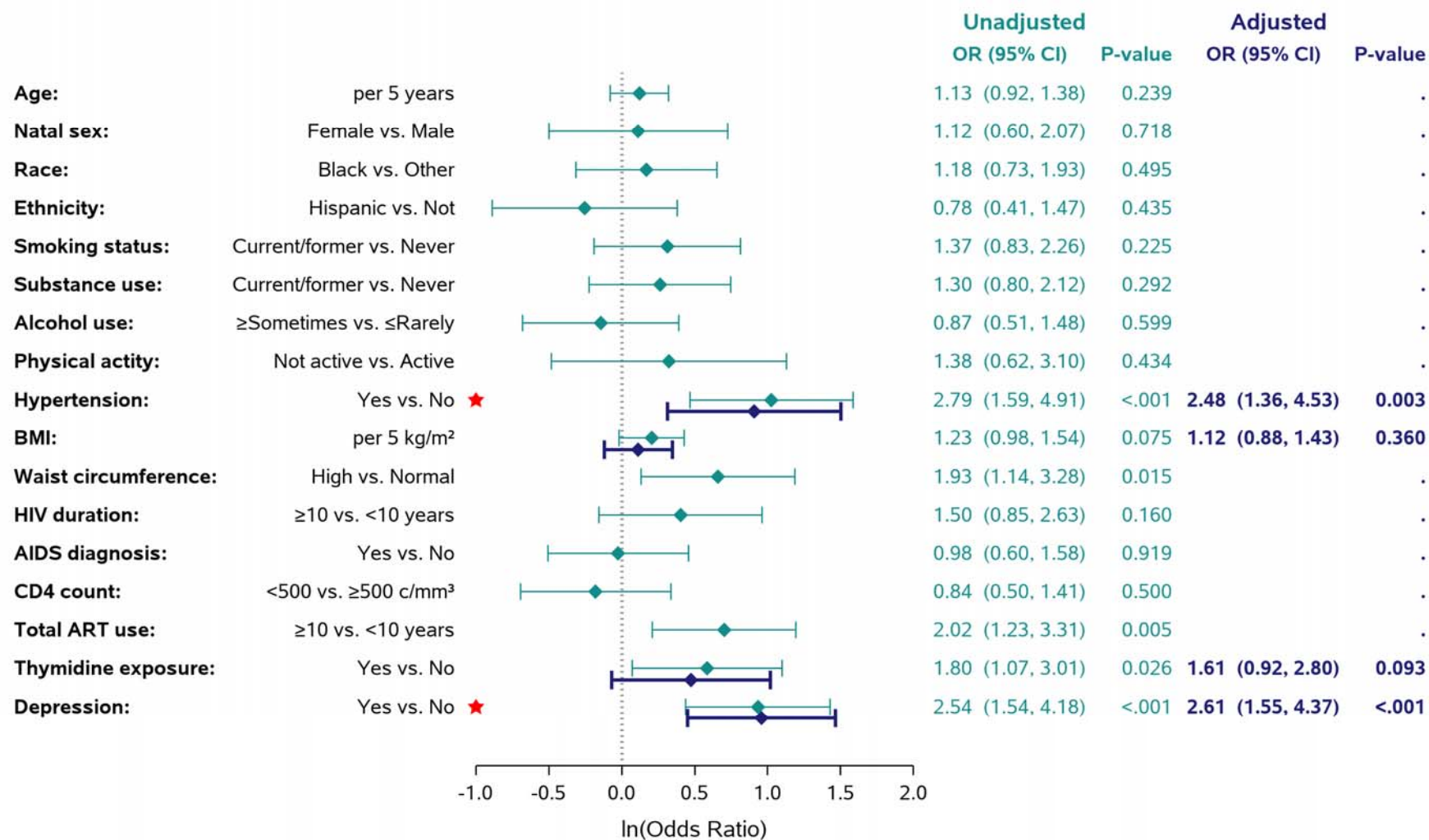


**Supplemental Figure 1: Associations with Frailty Phenotype**



Estimates are from logistic regression models with frailty/pre-frailty combined as the dependent variable (n=124 participants (48%) were frail or pre-frail). Odds ratios (OR) and confidence intervals (CI) are shown in log scale for visual purposes. Each unadjusted model includes a single covariate. The adjusted model includes all covariates that had p-values <0.05 in the unadjusted models and BMI (see Statistical Analysis). A star indicates p-value<0.05 in the adjusted model.

Abbreviations: ART, antiretroviral therapy; BMI, body mass index.