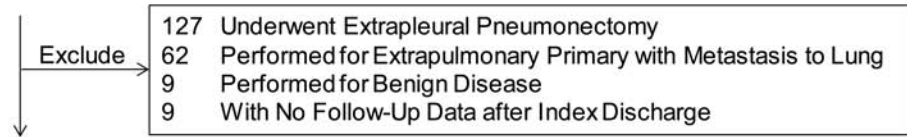


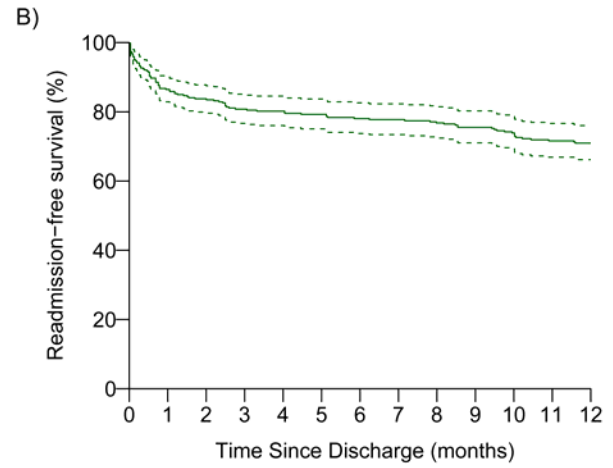
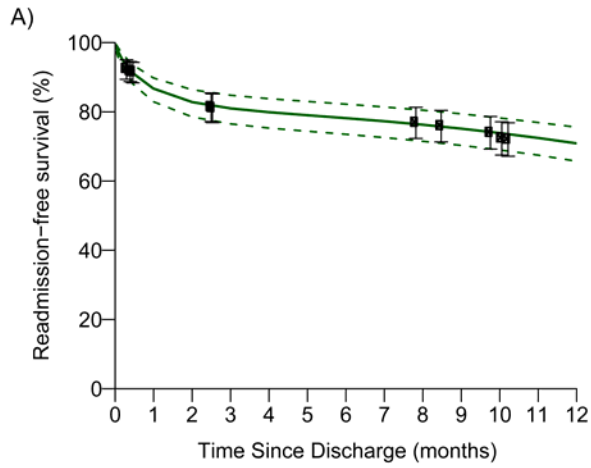
## CONSORT Diagram

562 Total Patients Received Pneumonectomy Between 2000 and 2018



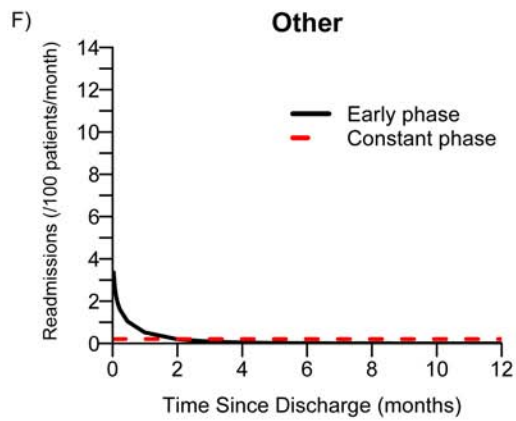
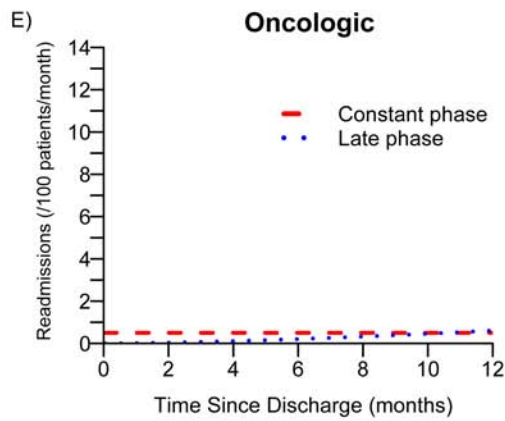
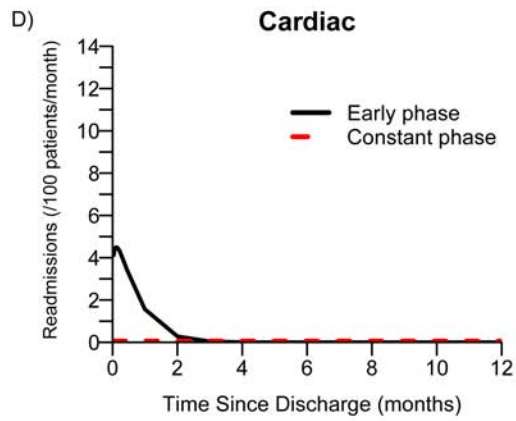
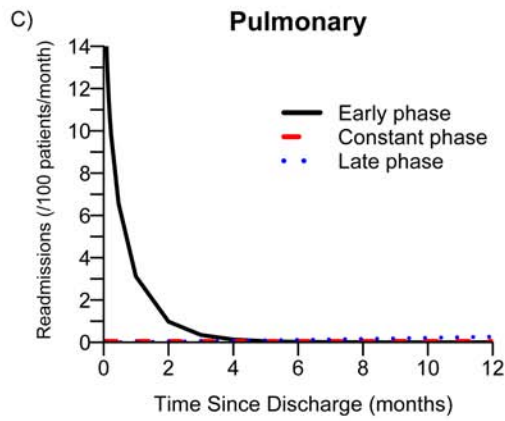
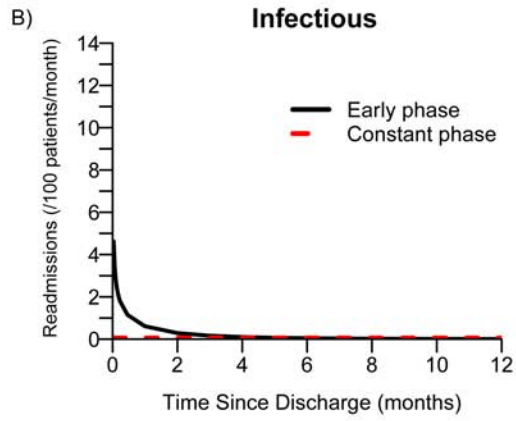
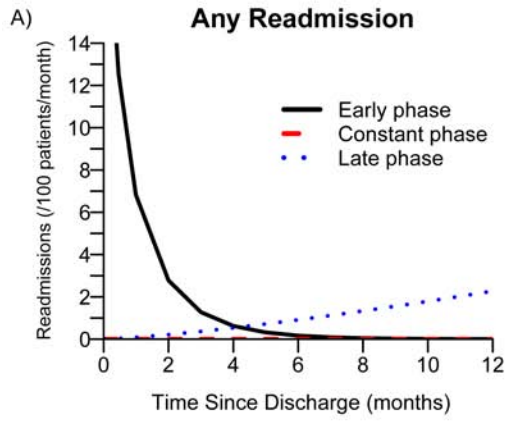
355 Total Patients Received Pneumonectomy for Lung Cancer  
with Follow-Up Data after Index Discharge

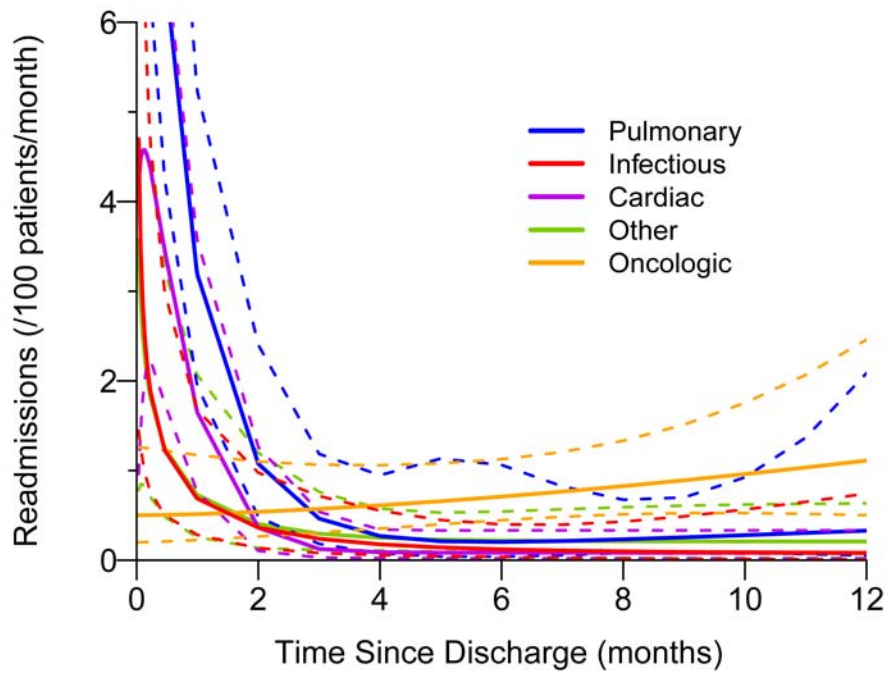
Journal Pre-proof

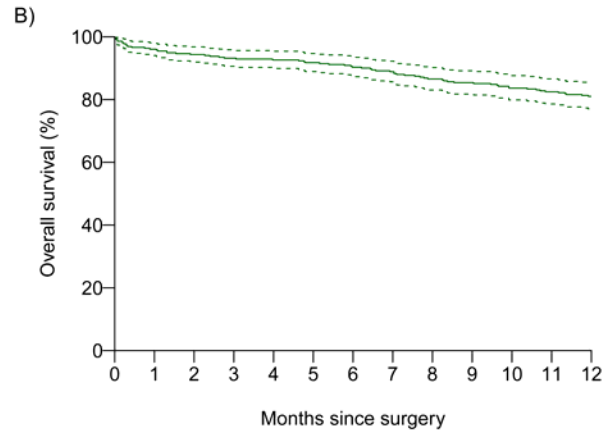
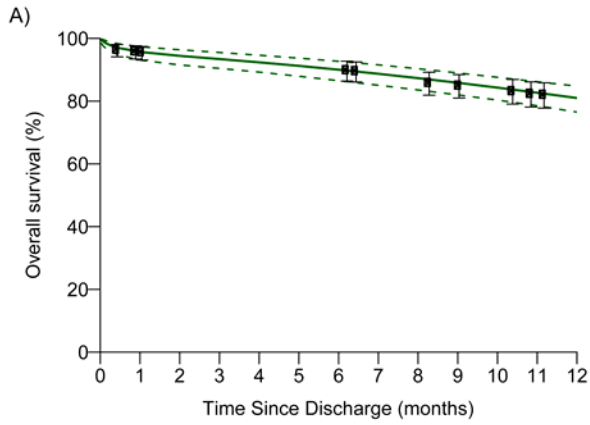


<b>No. At Risk</b>	342	280	265	254	241	227	210
<b>KM Est</b>	100	84	80	78	77	74	71
<b>95% CI</b>		(80,88)	(76,85)	(74,83)	(72,81)	(69,79)	(66,76)

Journal Pre-proof

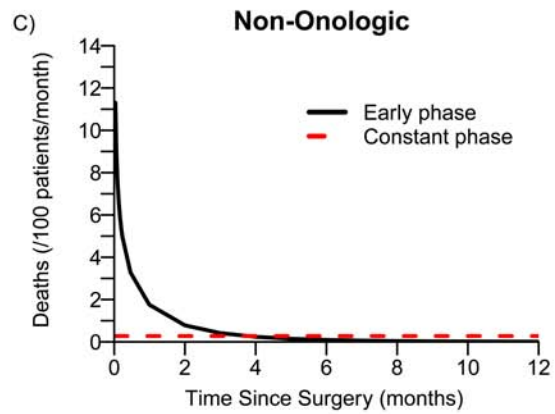
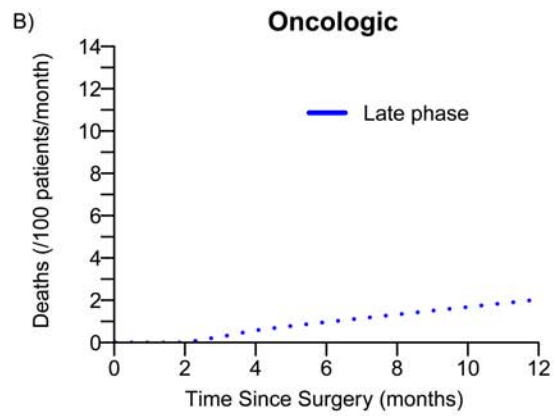
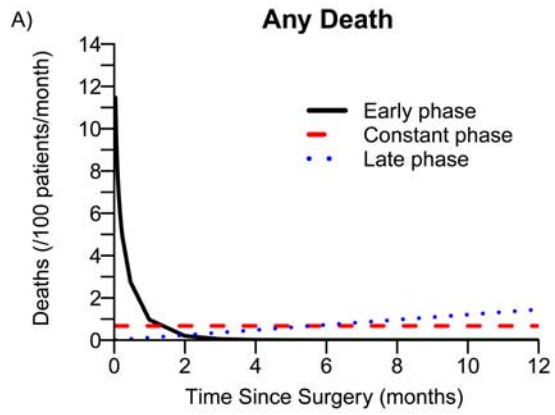






		355	329	322	313	299	287	276
<b>No. At Risk</b>		355	329	322	313	299	287	276
<b>KM Est</b>	100	94	93	90	87	84	81	
<b>95% CI</b>			(92,97)	(90,95)	(87,93)	(83,90)	(80,88)	(77,85)

Journal Pre-proof



**Supplementary Table 1. Causes of readmission by period**

<b>Category, Diagnosis</b>	<b>0-30 Days (N=43)</b>	<b>31-90 Days (N=34)</b>	<b>91 Days-1 Year (N=45)</b>
<b>Pulmonary</b>	24	16	6
Bronchopleural fistula	3	9	0
Chyle leak	1	0	0
Chronic obstructive pulmonary disease exacerbation	0	0	1
Hemoptysis	2	0	1
Hypoxic respiratory failure	2	2	0
Persistent air leak/pneumothorax	1	0	1
Pleural effusion	1	0	0
Shortness of breath/cough	14	5	3
<b>Cardiac</b>	8	6	3
Arrhythmia	3	1	0
Cardiac arrest	1	2	0
Congestive heart failure	1	0	0
Pericardial effusion	2	2	1
Pulmonary embolus	1	0	2
Syncope	0	1	0
<b>Infectious</b>	5	4	9
<i>Clostridium difficile</i> colitis	0	1	0
Pneumonia	3	2	5
Urinary tract infection	1	0	1
Wound infection	1	1	3
<b>Other</b>	4	4	6
Dehydration	1	1	1
Fall	0	3	0
Gastrointestinal bleed	1	0	0
Other cancer	0	0	3
Postoperative pain	2	0	2
<b>Oncologic</b>	2	4	21
Chemotherapy toxicity	0	1	0
Failure to thrive 2/2 advanced disease	0	2	9
Neurologic symptoms/brain metastasis	2	1	12

**Supplementary Table 2. Causes of death by period**

<b>Category, Diagnosis</b>	<b>N, 0-30 Days (N=16)</b>	<b>N, 31-90 Days (N=8)</b>	<b>N, 91 Days-1 Year (N=41)</b>
Nononcologic	16	8	9
Acute respiratory distress syndrome	3	0	0
Arrhythmia/cardiac arrest	4	2	3
Bronchopleural fistula	2	3	0
Cerebrovascular accident	0	1	1
Fall/Intracranial hemorrhage	0	1	0
Hemorrhage	2	0	0
Hypoxic respiratory failure	2	1	0
Ischemic bowel	1	0	0
Other cancer	0	0	1
Pneumonia	1	0	3
Pulmonary embolus	1	0	0
Sepsis	0	0	1
Oncologic	0	0	32
New primary	0	0	1
Recurrence	0	0	31





## What Really Happens at 30 and 90 Days After Pneumonectomy?

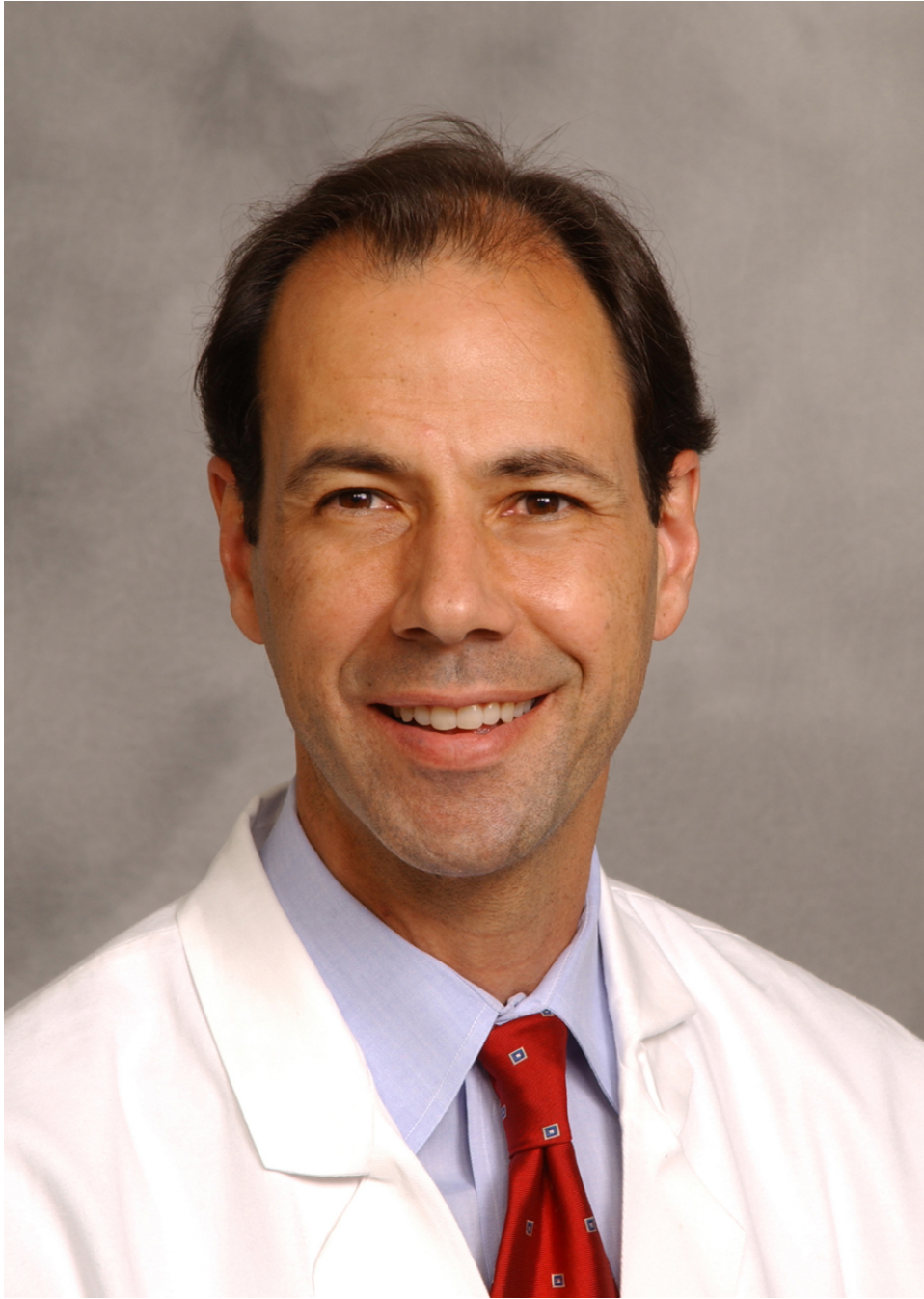
Gregory D. Jones MD, Raul Caso MD, Kay See Tan PhD,  
Joseph Dycoco, Bernard J. Park MD, Matthew J. Bott MD,  
Daniela Molena MD, James Huang MD, James M. Isbell MD,  
Manjit S. Bains MD, David R. Jones MD, Gaetano Rocco MD

AATS 99<sup>th</sup> Annual Meeting - 5/6/19

**Vision. Leadership. Scholarship.**

Journal Pre









Journal

