

Figure S1. Mapping of satDNA markers on chromosomes of triploid hybrids *C. elongatoides* × 2*C. taenia*. Representative metaphases after double-coloured FISH, indicating mutual position of satCE01 – satCE07. Bars equal 10 µm.

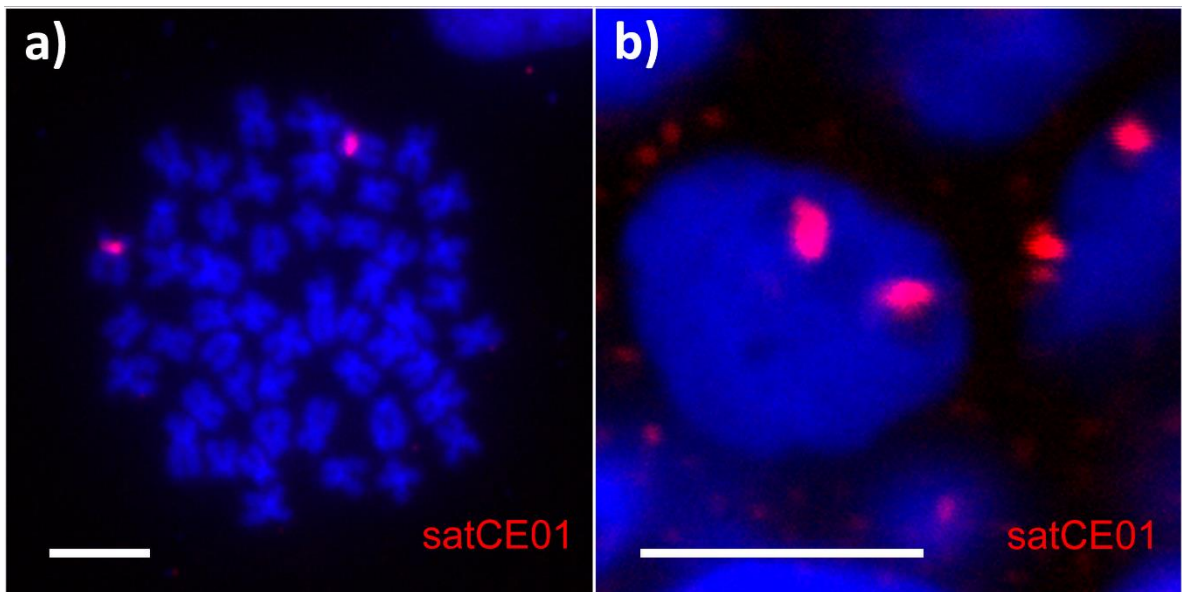


Figure S2. satCE01 detection in mitotic chromosomes (a) and germ cells (b) of *C. elongatoides*. Bars equal 5 µm.

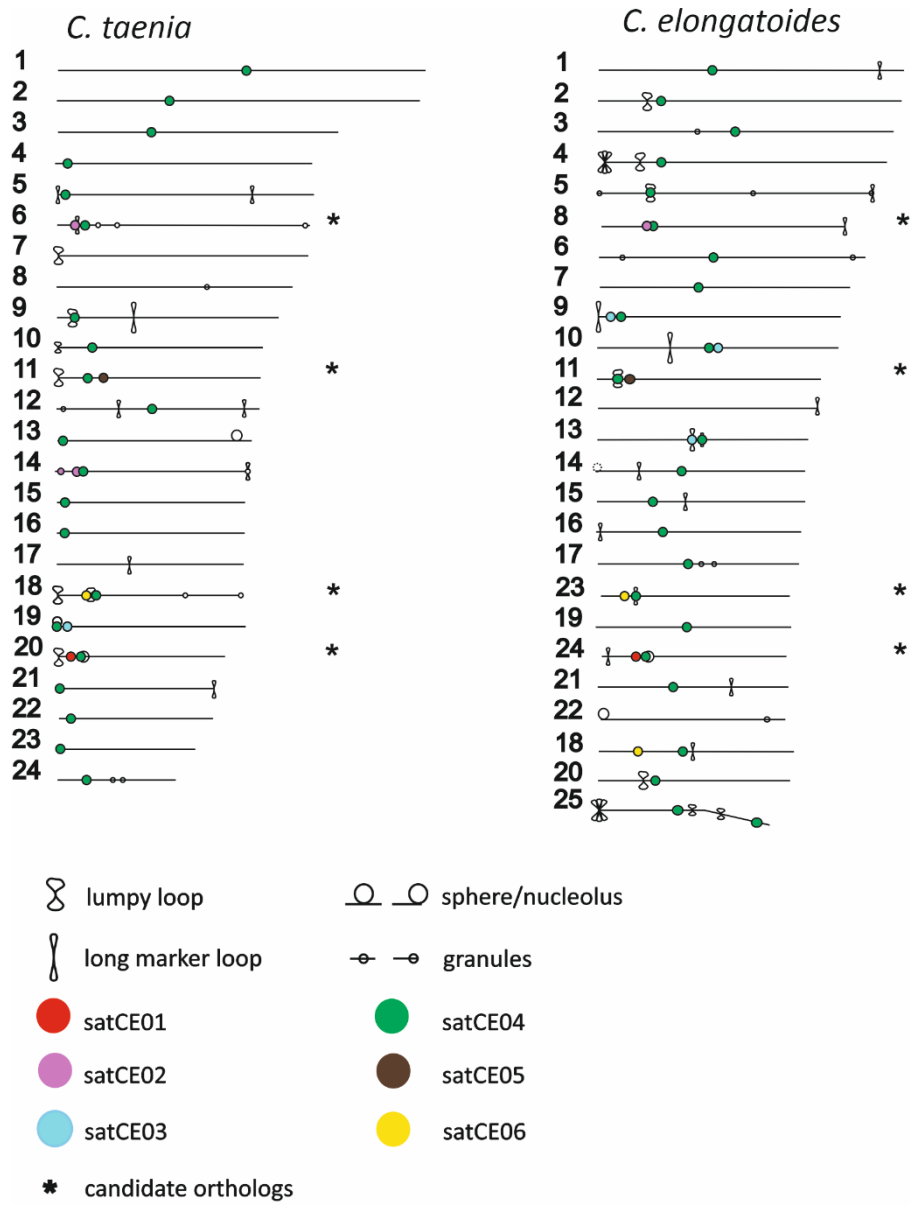


Figure S3. Maps of lampbrush chromosomes of *C. elongatoides* and *C. taenia*. Maps of lampbrush chromosomes with indication of relative position of selected satDNA markers. .