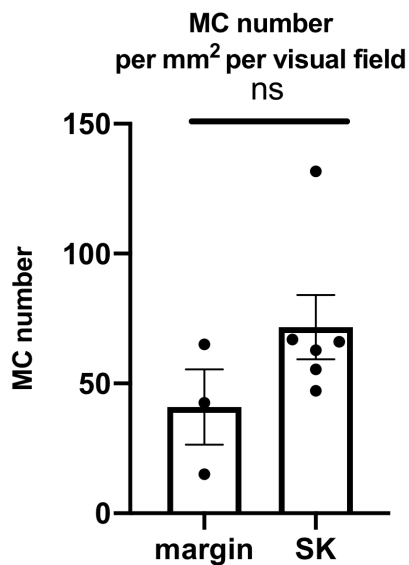


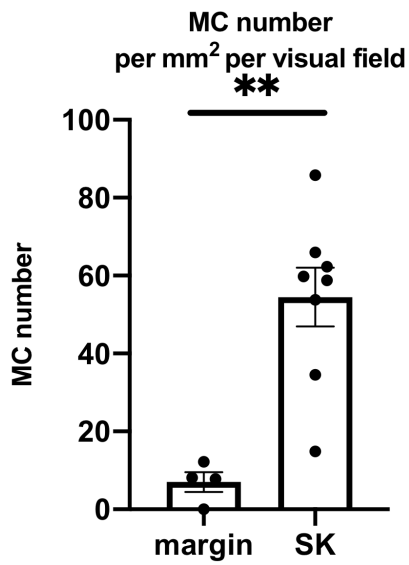
SUPPORTING INFORMATION

Fig. S1. Mean number of mast cells counted by toluidine blue histochemistry for each patient. Error bars indicate SEM. *P < 0.05, **P < 0.01, ***P < 0.001, ****P < 0.0001, ns; not significant.

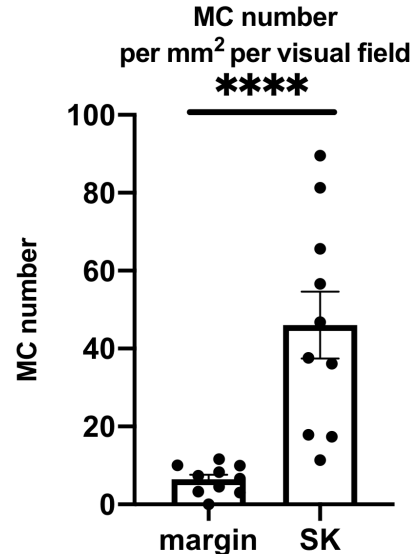
Patient1



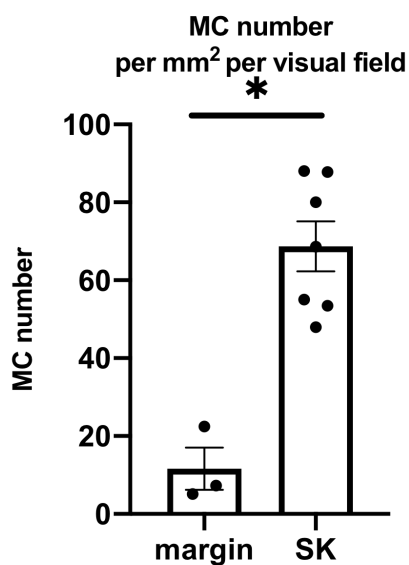
Patient2



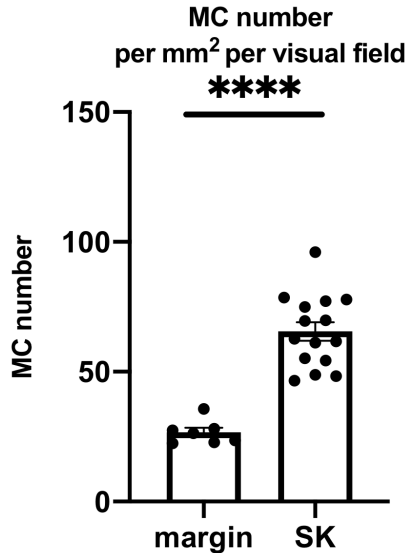
Patient3



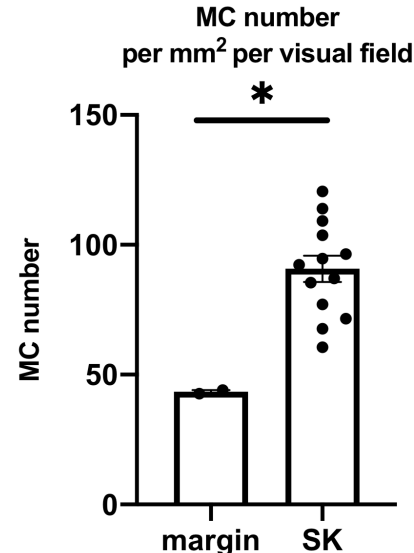
Patient4



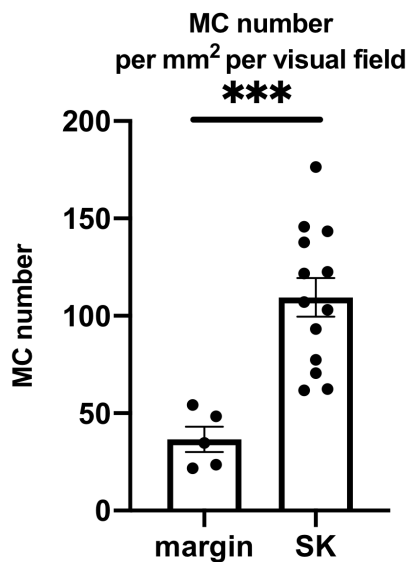
Patient5



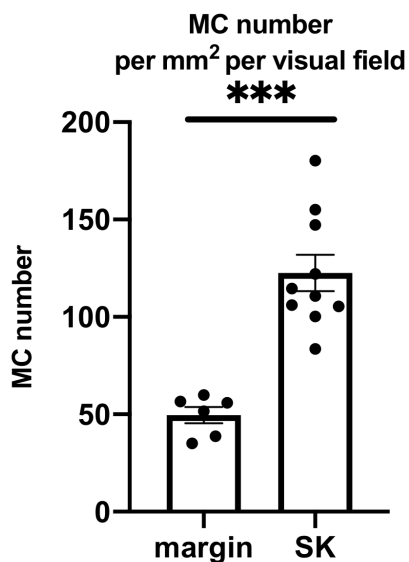
Patient6



Patient7



Patient8



Patient9

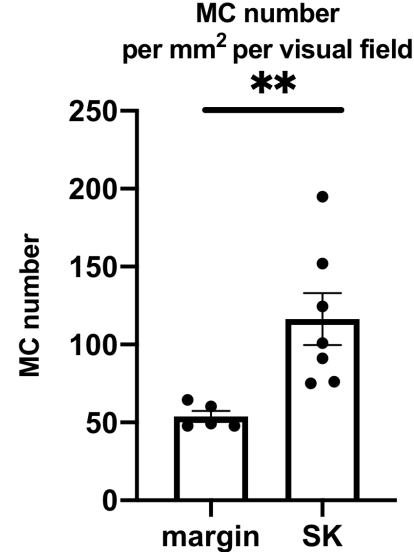
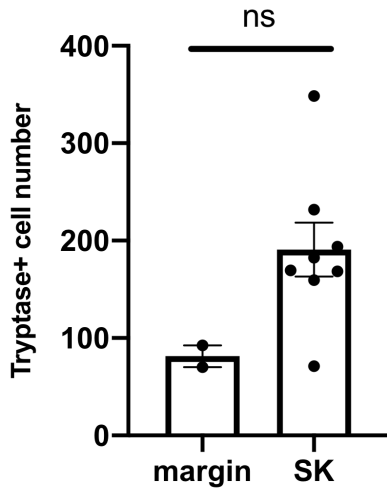


Fig. S1.

Fig. S2. Mean number of tryptase-positive cells for each patient. Error bars indicate SEM. *P < 0.05, **P < 0.01, ***P < 0.001, ****P < 0.0001, ns; not significant.

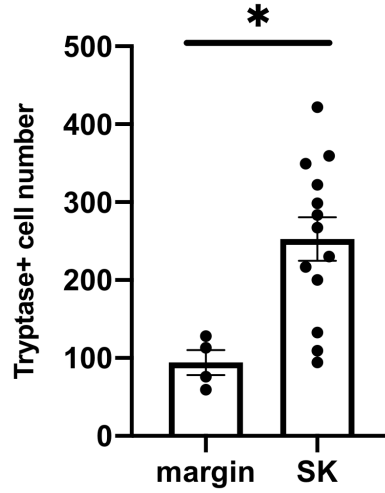
Patient1

Tryptase positive cell number per mm² per visual field



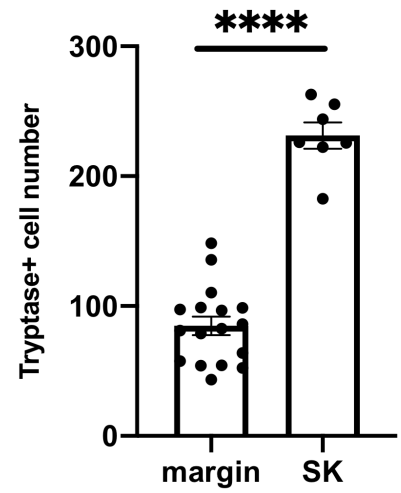
Patient2

Tryptase positive cell number per mm² per visual field



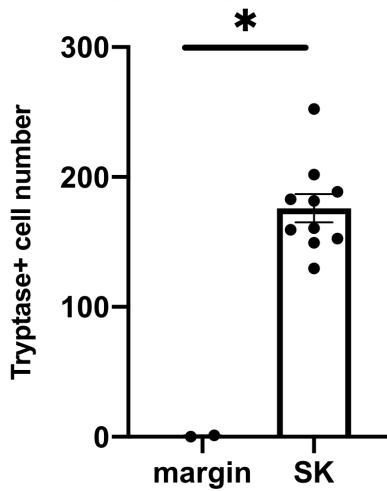
Patient3

Tryptase positive cell number per mm² per visual field



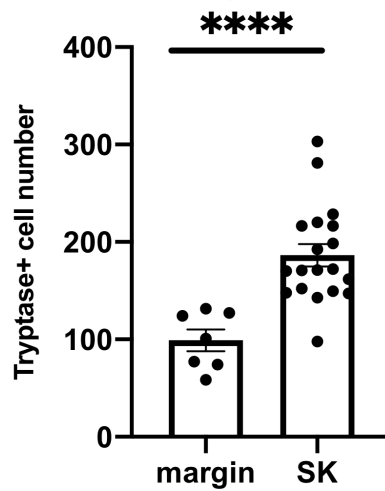
Patient4

Tryptase positive cell number per mm² per visual field



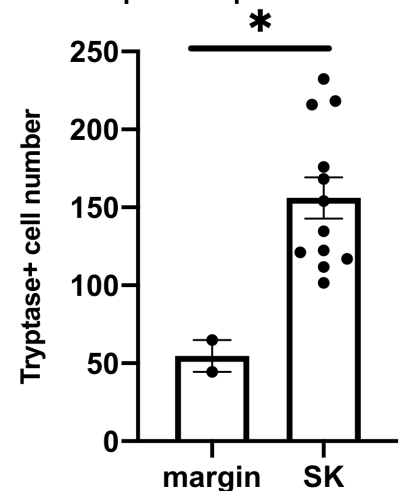
Patient5

Tryptase positive cell number per mm² per visual field



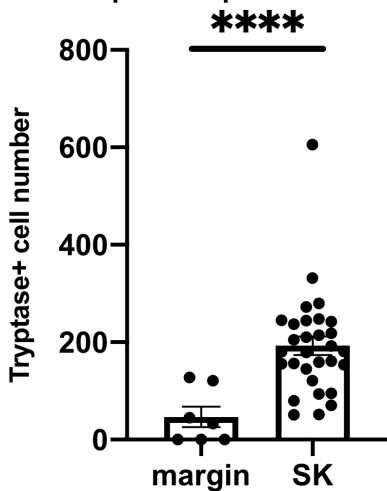
Patient6

Tryptase positive cell number per mm² per visual field



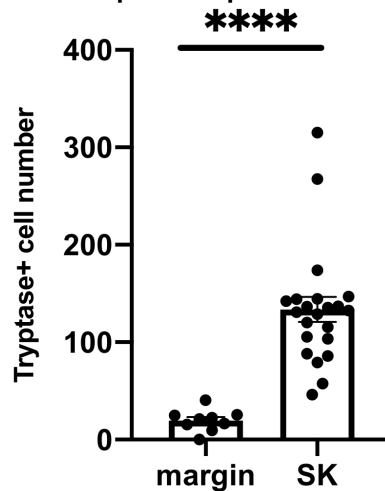
Patient7

Tryptase positive cell number per mm² per visual field



Patient8

Tryptase positive cell number per mm² per visual field



Patient9

Tryptase positive cell number per mm² per visual field

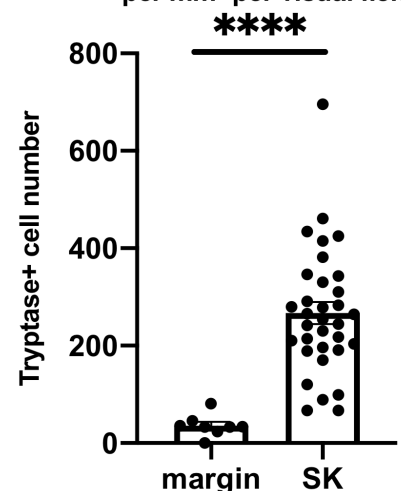
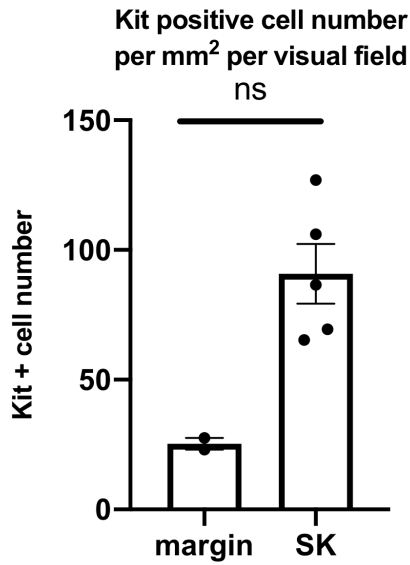


Fig. S2.

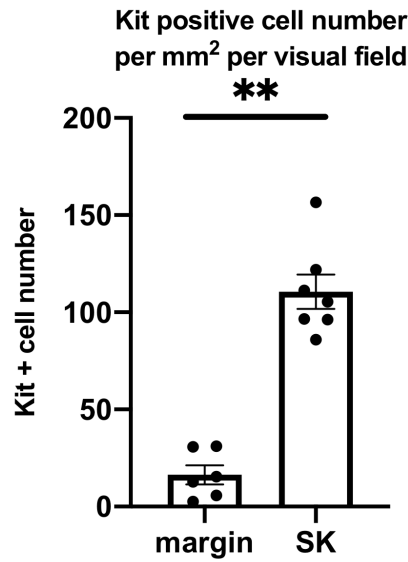
Fig. S3. Mean number of c-Kit-positive cells for each patient. Error bars indicate

SEM. *P < 0.05, **P < 0.01, ***P < 0.001, ****P < 0.0001, ns; not significant.

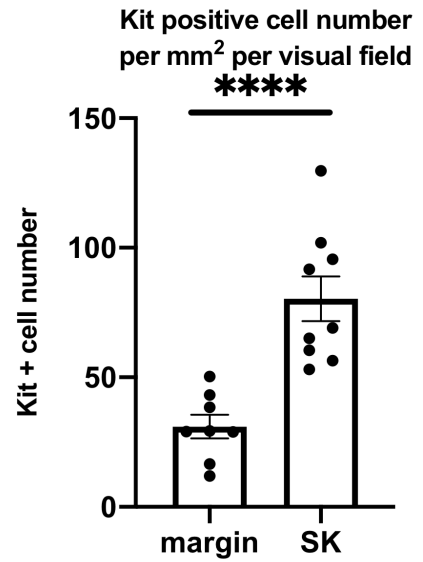
Patient1



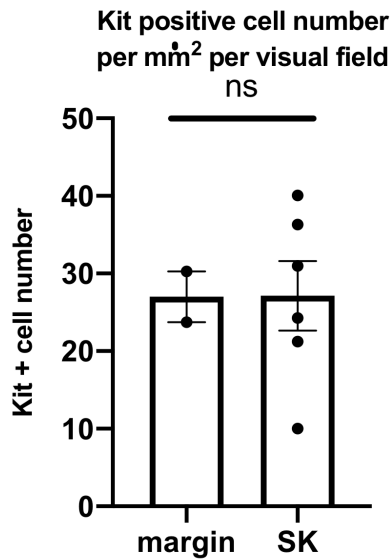
Patient2



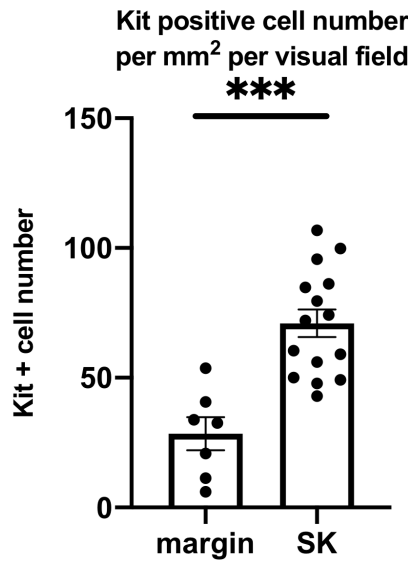
Patient3



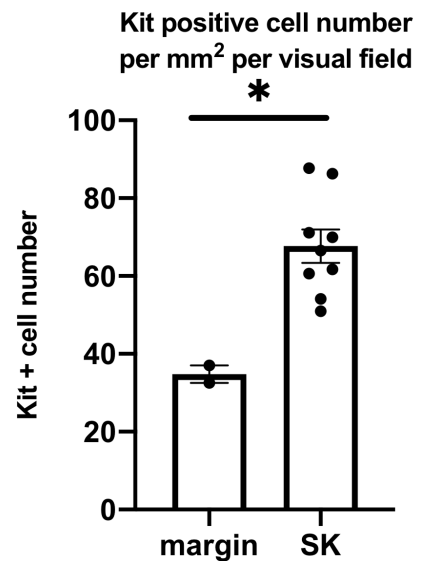
Patient4



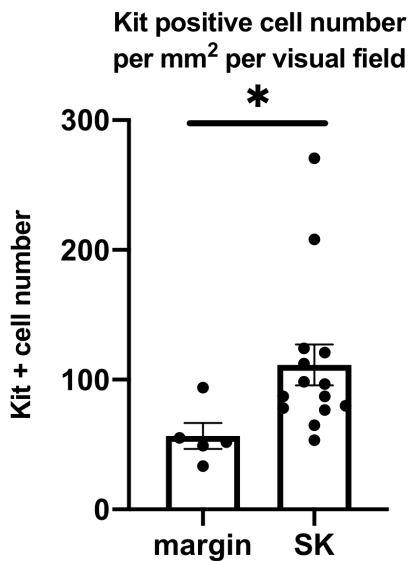
Patient5



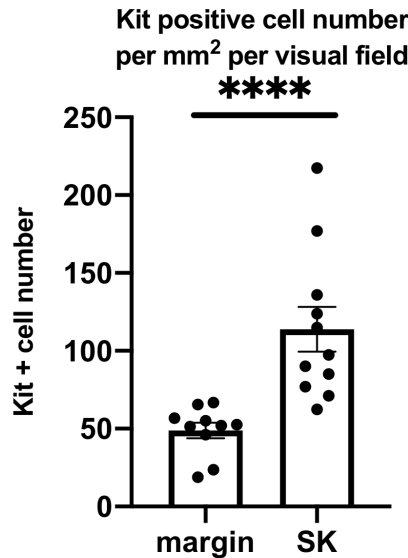
Patient6



Patient7



Patient8



Patient9

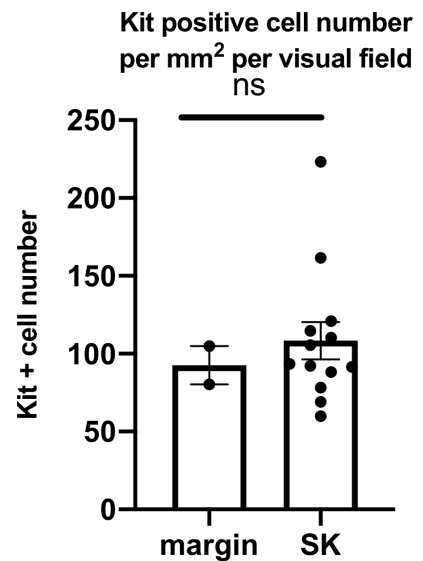
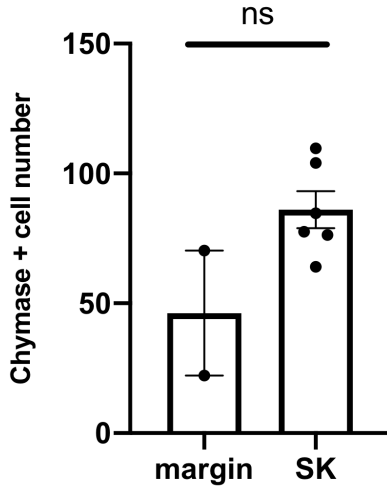


Fig. S3.

Fig. S4. Mean number of chymase-positive cells for each patient. Error bars indicate SEM. *P < 0.05, **P < 0.01, ***P < 0.001, ****P < 0.0001, ns; not significant.

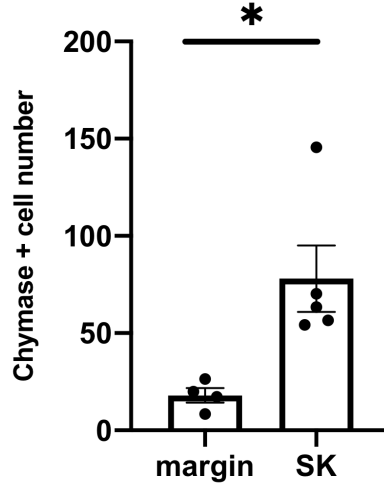
Patient1

Chymase positive cell number
per mm² per visual field



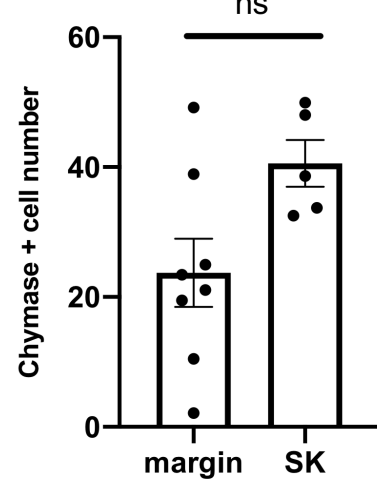
Patient2

Chymase positive cell number
per mm² per visual field



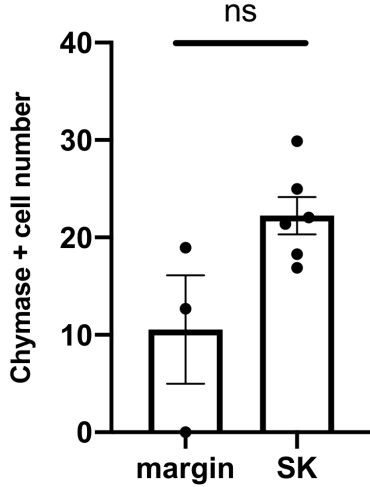
Patient3

Chymase positive cell number
per mm² per visual field



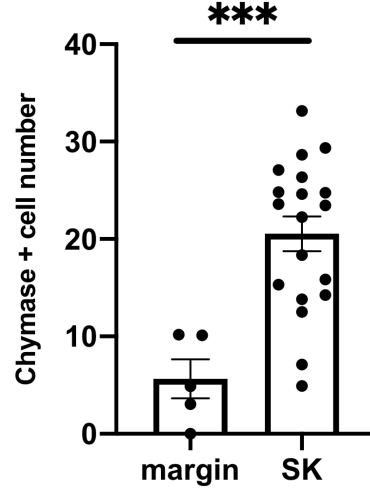
Patient4

Chymase positive cell number
per mm² per visual field



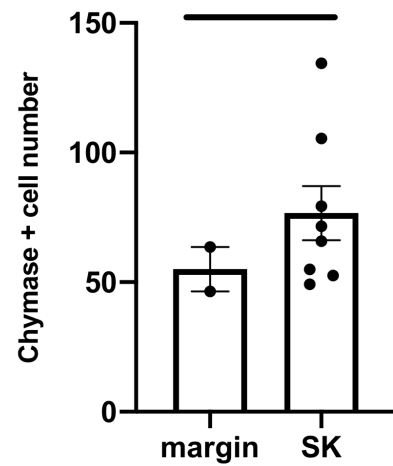
Patient5

Chymase positive cell number
per mm² per visual field



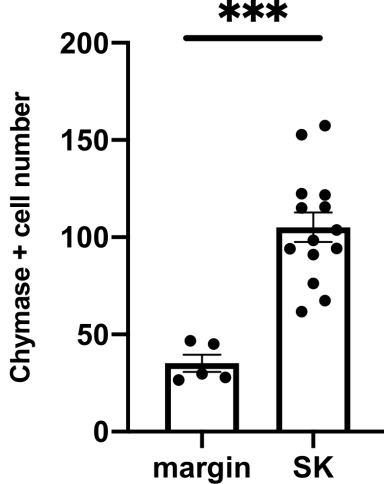
Patient6

Chymase positive cell number
per mm² per visual field



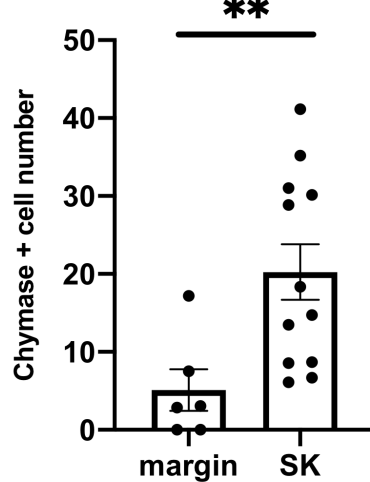
Patient7

Chymase positive cell number
per mm² per visual field



Patient8

Chymase positive cell number
per mm² per visual field



Patient9

Chymase positive cell number
per mm² per visual field

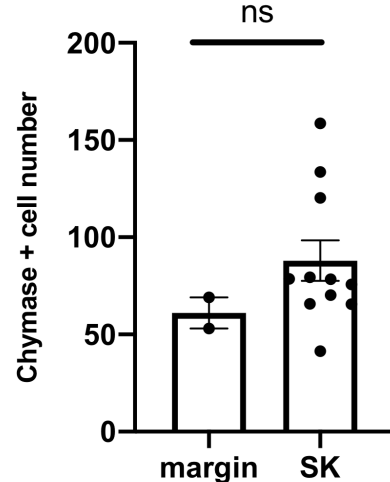
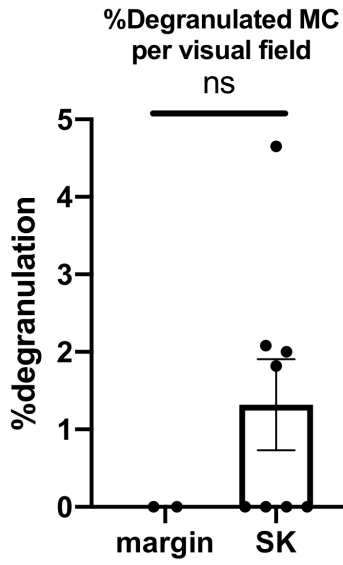


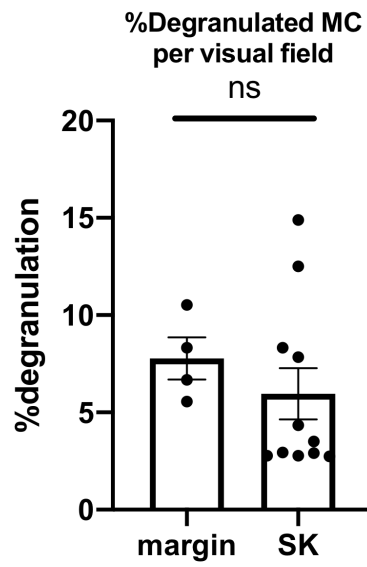
Fig. S4.

Fig. S5. Mean proportion of degranulated mast cells for each patient based on tryptase immunohistochemistry. Error bars indicate SEM. *P < 0.05, **P < 0.01, ***P < 0.001, ****P < 0.0001, ns; not significant.

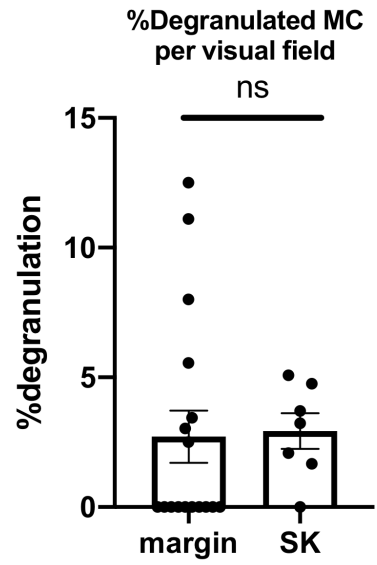
Patient1



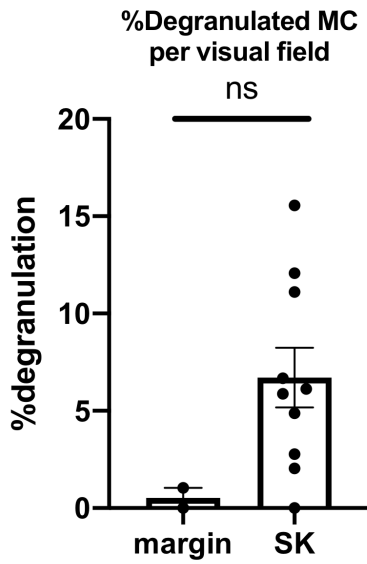
Patient2



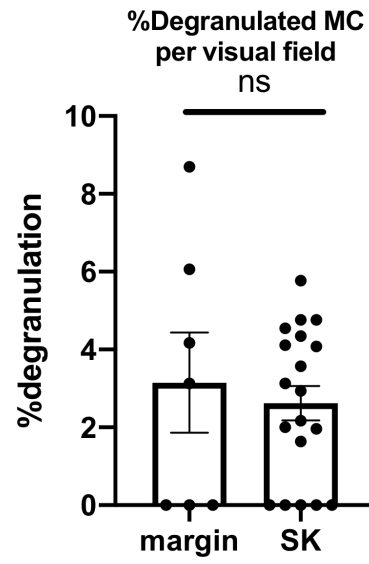
Patient3



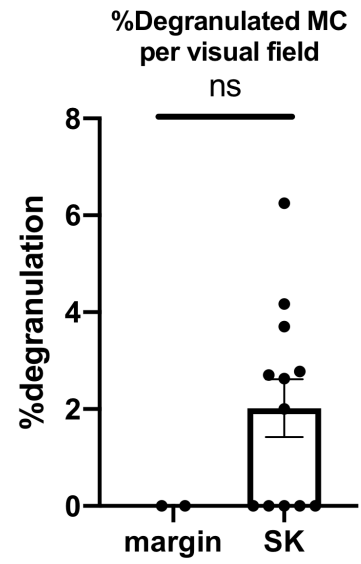
Patient4



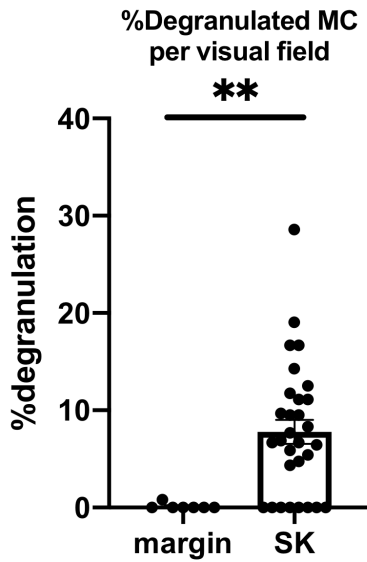
Patient5



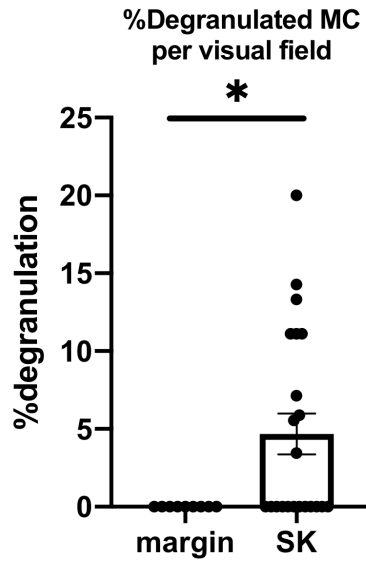
Patient6



Patient7



Patient8



Patient9

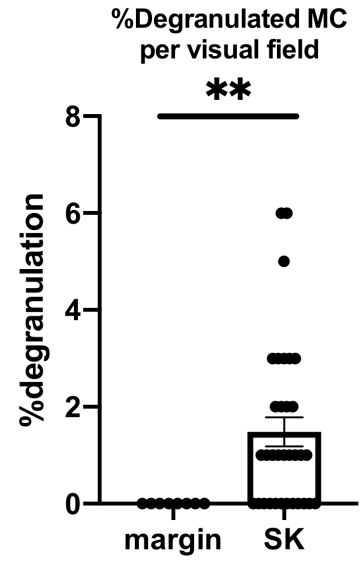


Fig. S5.

Fig. S6. Mean SCF immunoreactivity in the epidermis for each patient. Error bars indicate SEM. *P < 0.05, **P < 0.01, ***P < 0.001, ****P < 0.0001, ns; not significant.

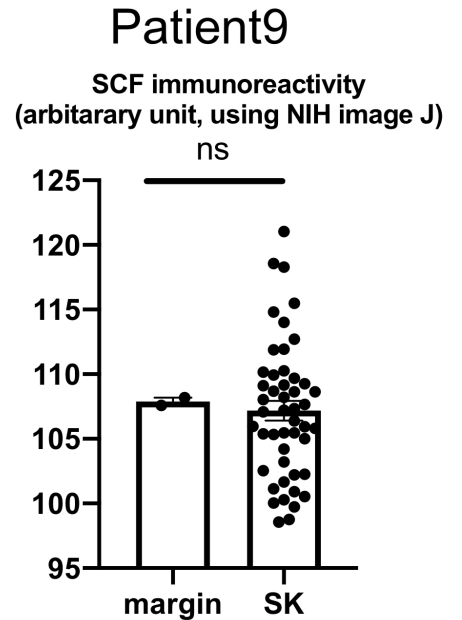
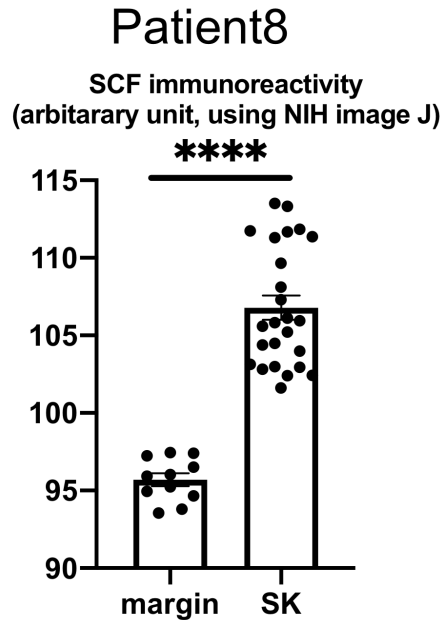
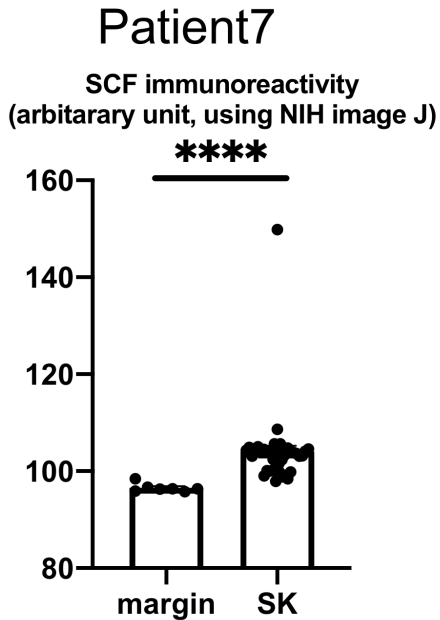
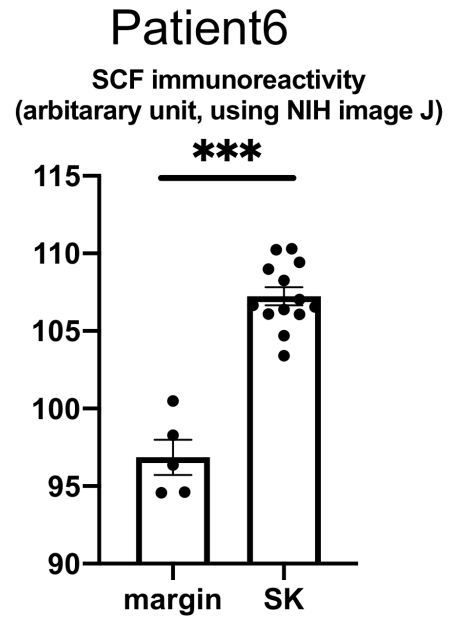
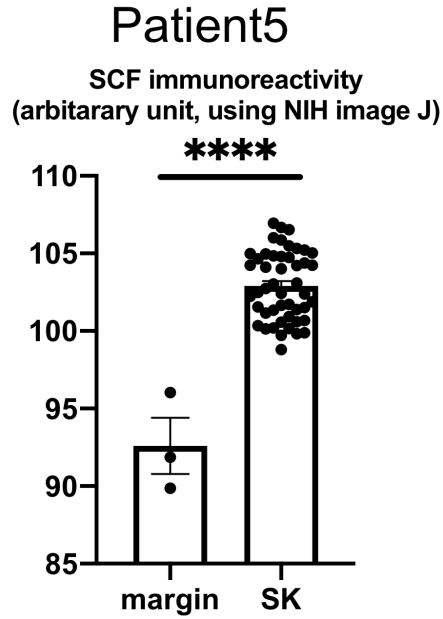
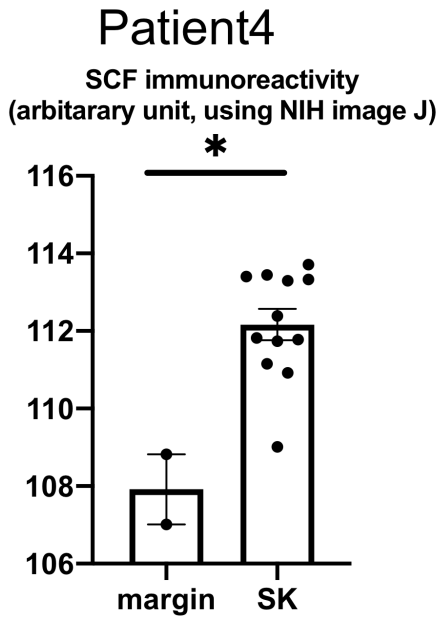
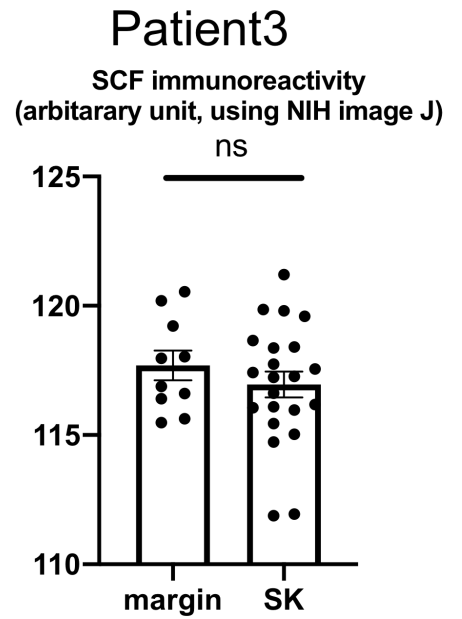
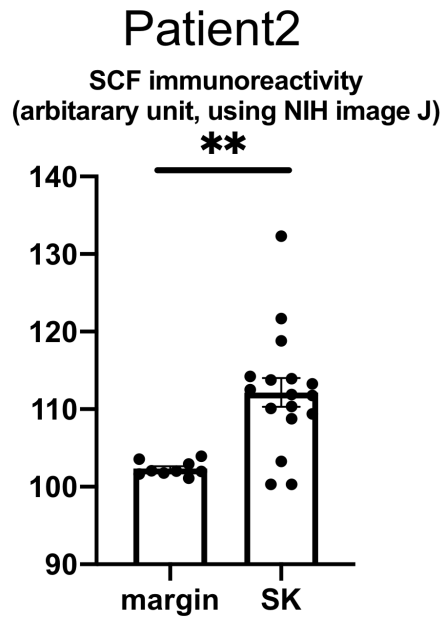
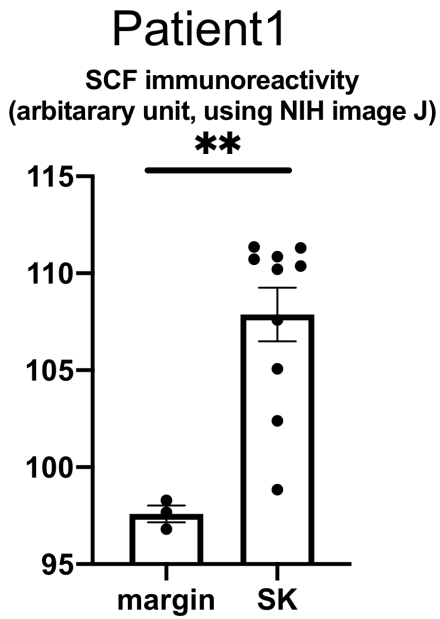


Fig. S6.

Fig. S7. NGF immunohistochemistry showed no significant difference in the mean NGF immunoreactivity within the tumor compared to its marginal lesion.

Error bars indicate SEM, n=9. ns; not significant. Scale bar = 50 μ m.

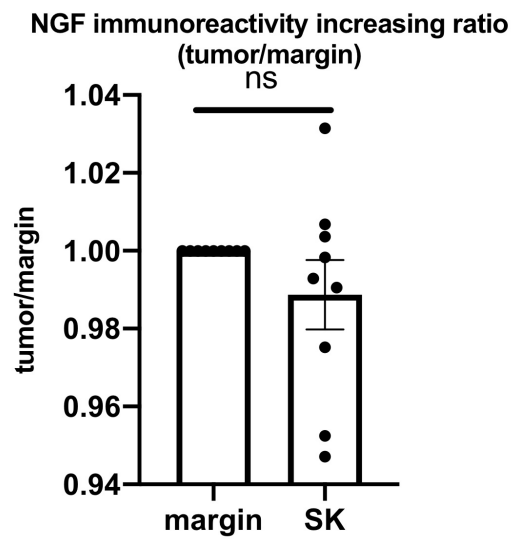
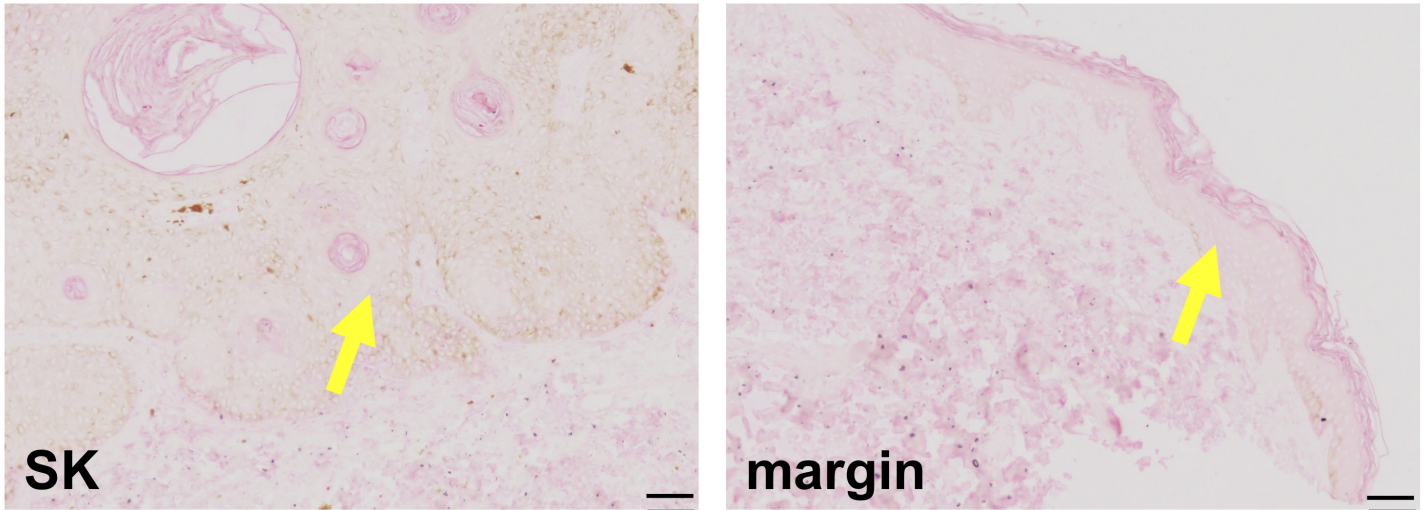


Fig. S7.

Fig. S8. Mean CB1 immunoreactivity in the epidermis for each patient. Error bars

indicate SEM. *P < 0.05, **P < 0.01, ***P < 0.001, ****P < 0.0001.

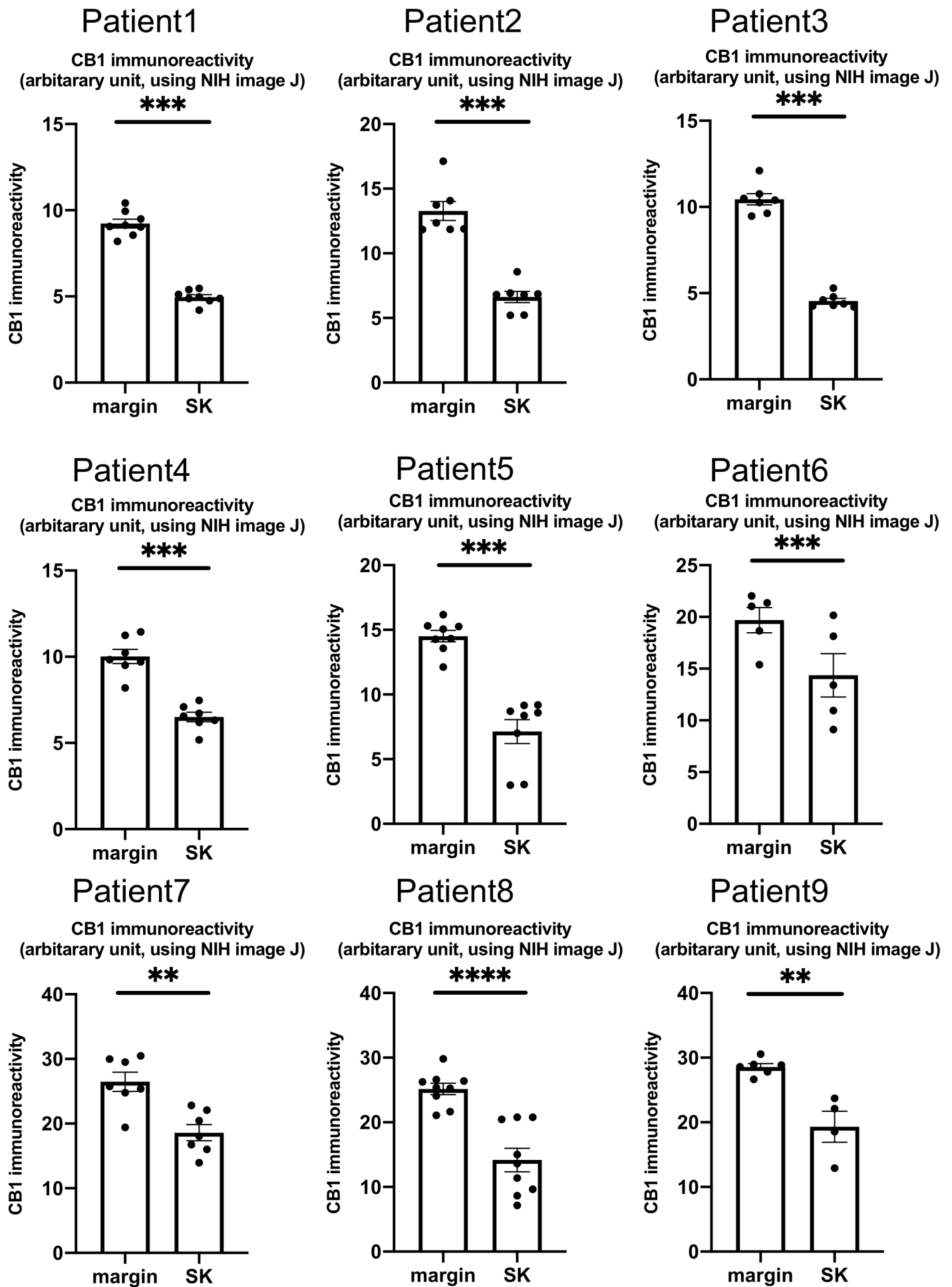


Fig. S8.