

S1 TABLE. Isolates of the *Candida haemulonii* complex included in the phylogenetic analysis of internal transcribed spacers (ITS1 and ITS2) sequences

<b>Isolate</b>	<b>GenBank accession no.</b>	<b>Species</b>
HCFMUSP01	KT236448.1	<i>C. duobushaemulonii</i>
HCFMUSP02	KT968725.1	<i>C. duobushaemulonii</i>
HCFMUSP03	KT236449.1	<i>C. haemulonii</i> var. <i>vulnera</i>
HCFMUSP04	KT968726.1	<i>C. duobushaemulonii</i>
HCFMUSP05	KT968713.1	<i>C. haemulonii</i>
HCFMUSP06	KT968733.1	<i>C. haemulonii</i> var. <i>vulnera</i>
HCFMUSP07	KT968734.1	<i>C. haemulonii</i> var. <i>vulnera</i>
HCFMUSP08	KT968735.1	<i>C. haemulonii</i> var. <i>vulnera</i>
HCFMUSP09	KT968714.1	<i>C. haemulonii</i>
HCFMUSP10	KT257659.1	<i>C. haemulonii</i>
HCFMUSP11	KT968727.1	<i>C. duobushaemulonii</i>
HCFMUSP12	KT968715.1	<i>C. haemulonii</i>
HCFMUSP13	KT968716.1	<i>C. haemulonii</i>
HCFMUSP14	KT968728.1	<i>C. duobushaemulonii</i>
HCFMUSP15	KT968729.1	<i>C. duobushaemulonii</i>
HCFMUSP16	KT968730.1	<i>C. duobushaemulonii</i>
HCFMUSP17	KT968717.1	<i>C. haemulonii</i>
HCFMUSP18	KT968731.1	<i>C. duobushaemulonii</i>
HCFMUSP19	KT968718.1	<i>C. haemulonii</i>
HCFMUSP20	KT968732.1	<i>C. duobushaemulonii</i>
HCFMUSP21	KT968719.1	<i>C. haemulonii</i>
HCFMUSP22	KT968720.1	<i>C. haemulonii</i>
HCFMUSP23	KT968721.1	<i>C. haemulonii</i>
HCFMUSP24	KT968736.1	<i>C. haemulonii</i> var. <i>vulnera</i>
HCFMUSP25	KT968737.1	<i>C. haemulonii</i> var. <i>vulnera</i>
HCFMUSP26	KT968722.1	<i>C. haemulonii</i>
HCFMUSP27	KT257660.1	<i>C. haemulonii</i>
HCFMUSP28	KT968723.1	<i>C. haemulonii</i>
HCFMUSP29	KT968738.1	<i>C. haemulonii</i> var. <i>vulnera</i>
HCFMUSP30	KT968724.1	<i>C. haemulonii</i>
HCFMUSP31	KT968739.1	<i>C. haemulonii</i> var. <i>vulnera</i>
HCFMUSP32	KU365080.1	<i>C. duobushaemulonii</i>
HCFMUSP33	KU365081.1	<i>C. haemulonii</i> var. <i>vulnera</i>
IMT-USP01	KX118598.1	<i>C. haemulonii</i> var. <i>vulnera</i>

HCFMUSP34	KX118599.1	<i>C. haemulonii</i> var. <i>vulnera</i>
HCFMUSP35	KX118600.1	<i>C. duobushaemulonii</i>
HCFMUSP36	KX118601.1	<i>C. haemulonii</i>
HCFMUSP37	KX118602.1	<i>C. haemulonii</i> var. <i>vulnera</i>
CBS5149T	AB118789.1	<i>C. haemulonii</i>
CBS7798T	JX459666.1	<i>C. duobushaemulonii</i>
CBS7799	JX459667.1	<i>C. duobushaemulonii</i>
CBS10004	AB118791.1	<i>C. pseudohaemulonii</i>
KCTC17807	JX459678.1	<i>C. pseudohaemulonii</i>
CBS12883	KF689018.1	<i>C. auris</i>
CBS12766	KC692039.1	<i>C. auris</i>

---

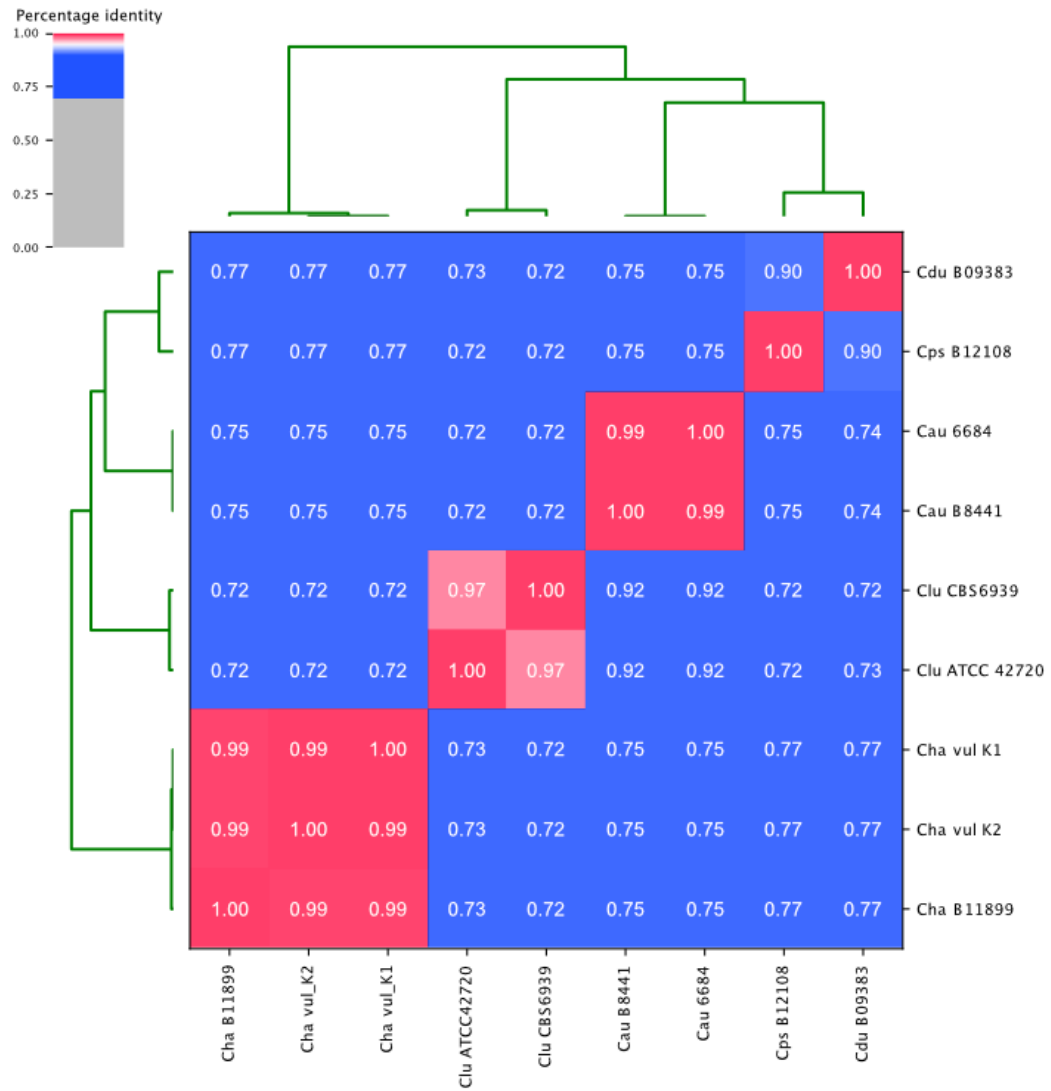


FIGURE S1. ANI analysis between *C. haemulonii* B11899, *C. haemulonii* var. *vulnera* (K2 and K1), *C. lusitaniae* (ATCC 427720 and CBS6939), *C. auris* (B8441 and 6684), *C. pseudohaemulonii* (B12108) and *C. duobushaemulonii* (B09383).

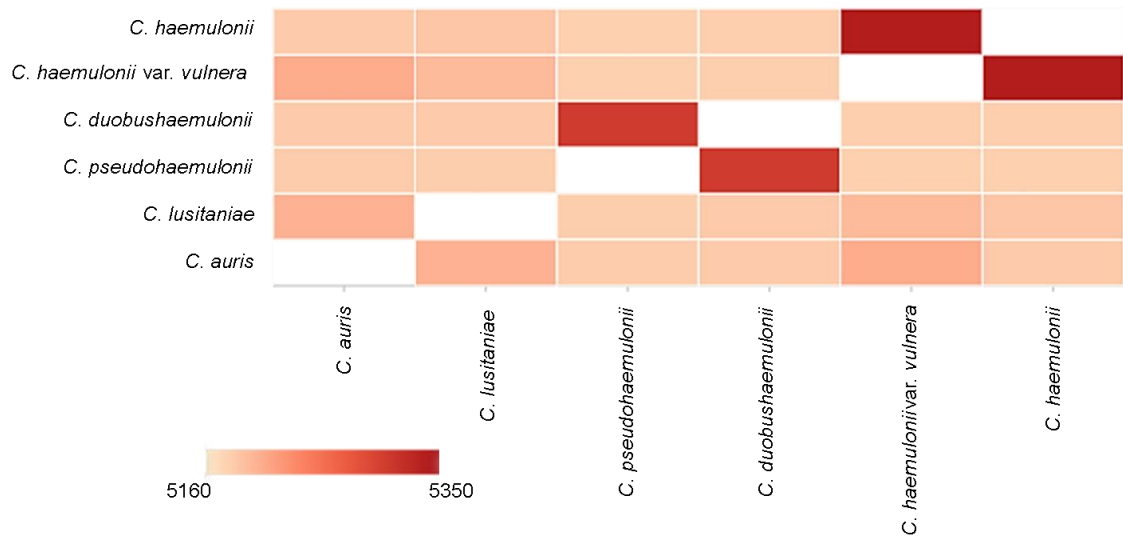


FIGURE S2. Heat map to visualize the intensity of overlapping clusters for the species in a pairwise fashion.