

# Supporting information

**One-pot covalent grafting of gelatin on polyvinyl alcohol hydrogel to enhance endothelialization and hemocompatibility for synthetic vascular graft applications**

**Muhammad Rizwan<sup>1</sup>, Yuan Yao<sup>1</sup>, Maud B. Gorbet<sup>2,3</sup>, John Tse<sup>1</sup>, Deirdre E. J. Anderson<sup>4</sup>; Monica T. Hinds<sup>4</sup>, Evelyn K. F. Yim<sup>1,5\*</sup>**

<sup>1</sup> Department of Chemical Engineering, University of Waterloo, 200 University Avenue West, Waterloo, ON, Canada N2L 3G1

<sup>2</sup> Systems Design Engineering, University of Waterloo, 200 University Avenue West, Waterloo, ON, Canada N2L 3G1

<sup>3</sup> Centre for Bioengineering and Biotechnology, University of Waterloo, 200 University Avenue West, Waterloo, ON, Canada N2L 3G1

<sup>4</sup> Department of Biomedical Engineering, Oregon Health & Science University, Portland, OR 97239, USA

<sup>5</sup> Mechanobiology Institute Singapore, National University of Singapore, Singapore 117411, Singapore

\* Corresponding author: Evelyn K.F. Yim

Department of Chemical Engineering, University of Waterloo, 200 University Avenue West, Waterloo, ON, Canada N2L 3G1 E-mail: [eyim@uwaterloo.ca](mailto:eyim@uwaterloo.ca)

## Contents

Fig S1. Flow cytometry scatter plots for various groups as indicated in the figure showing the CD61+ events. The gates for the microparticles (CD61+) is in the rectangle on lower left while the center gate represents CD61+ platelets.

Fig S2. A typical example of the thrombin formation assay kinetic curve

Fig S3. Thrombin formation assay in the presence of an external activator (lipids and tissue factor). Human donor platelet rich plasma collected after incubation with different samples for 1 hr was used to analyze the thrombin formation. (a) Lag-time, which represents time taken before the thrombin generation can be observed after the assay is started. Higher lag-time shows lower tendency of blood plasma to form thrombus (b) Peak thrombin formation (c) Total thrombin formed during the assay.

Fig S4. Gelatin conjugation on freeze-thaw PVA (10% PVA solution; 1 freeze-thaw cycle) hydrogel enhanced HUVECs adhesion compared to unmodified PVA hydrogel. The cells were fixed with 4% PFA 24 hrs after seeding and stained with DAPI (blue) and phalloidin

Fig S5: A typical low magnification image of HUVEC monolayer showing uniform cell attachment on gelatin conjugated PVA (PVA-CDIg) at the center and edge of the sample, which shows that the gelatin was uniformly distributed on the surface. Red: phalloidin; Blue: Dapi. Scale Bar = 100 $\mu$ m

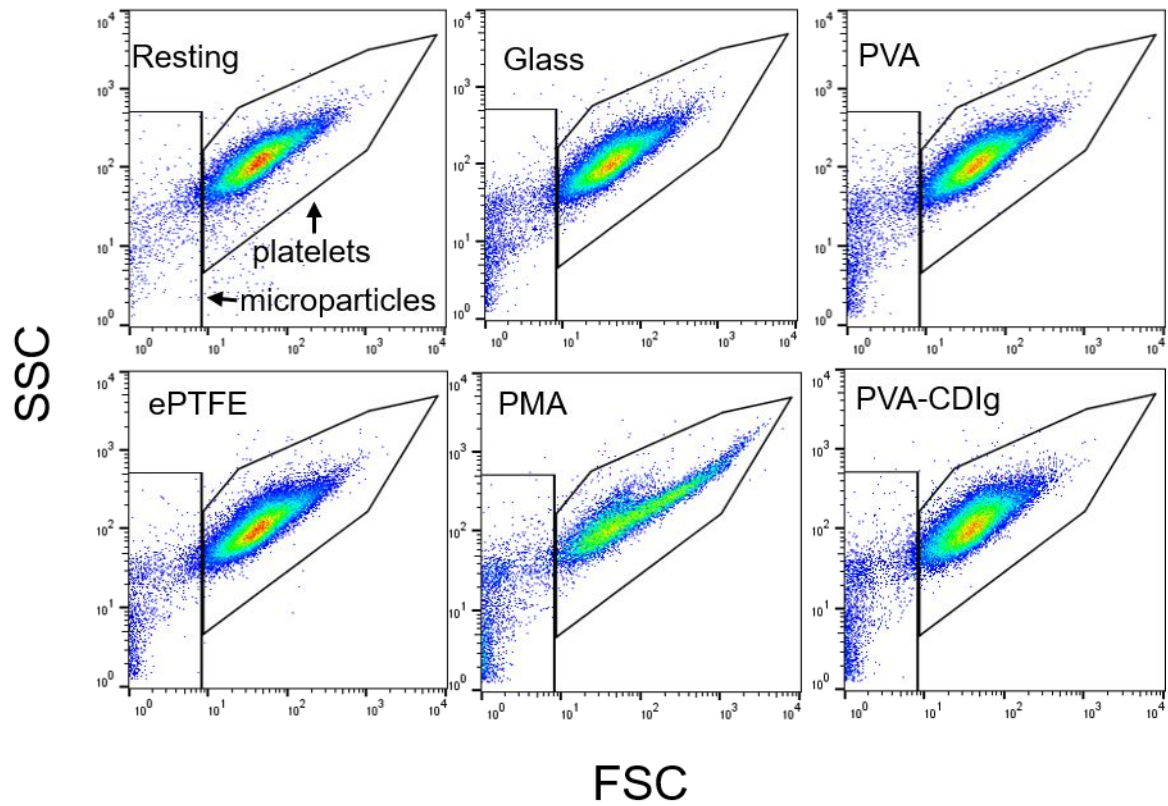


Fig S1. Flow cytometry scatter plots for various groups as indicated in the figure showing the CD61+ events. The gates for the microparticles (CD61+) is in the rectangle on lower left while the center gate represents CD61+ platelets.

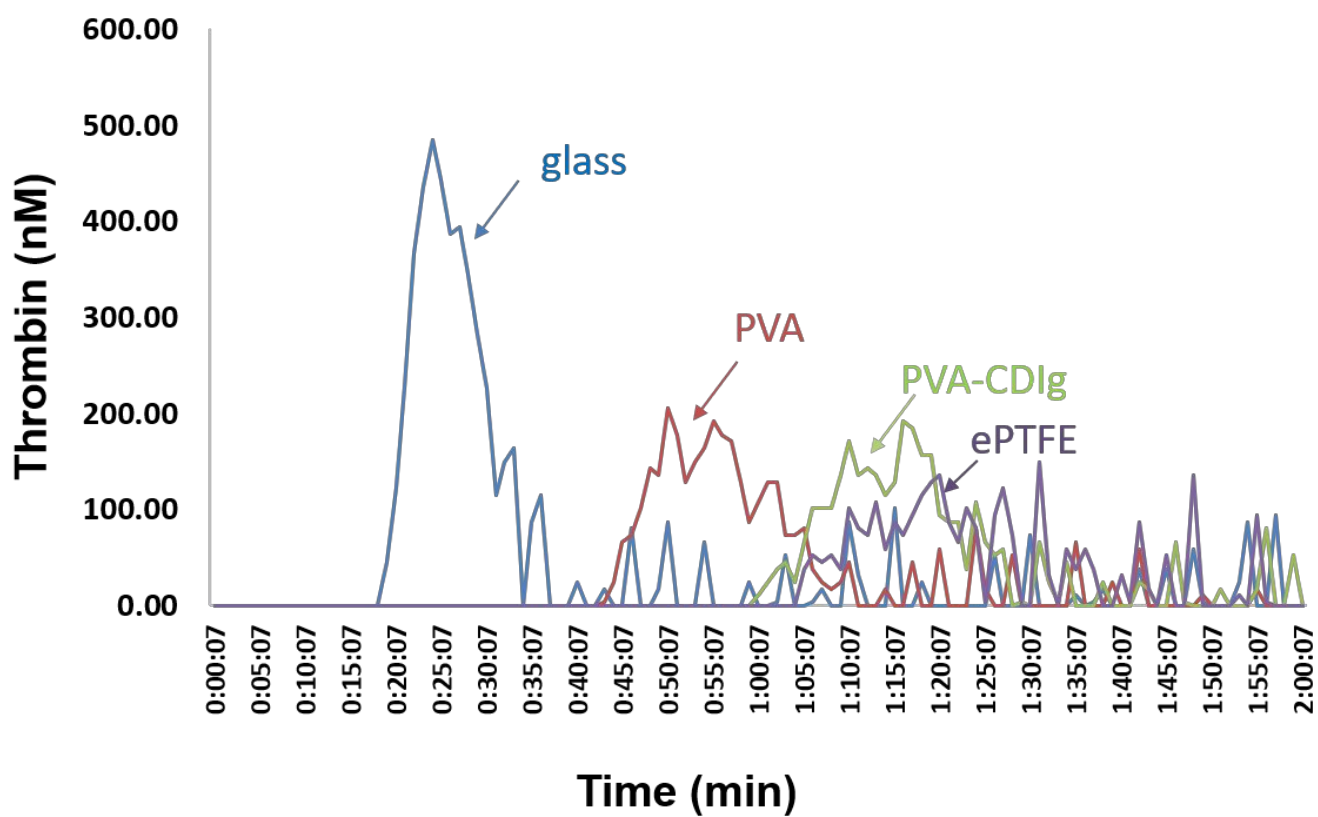


Fig S2. A typical example of the thrombin formation assay kinetic curve

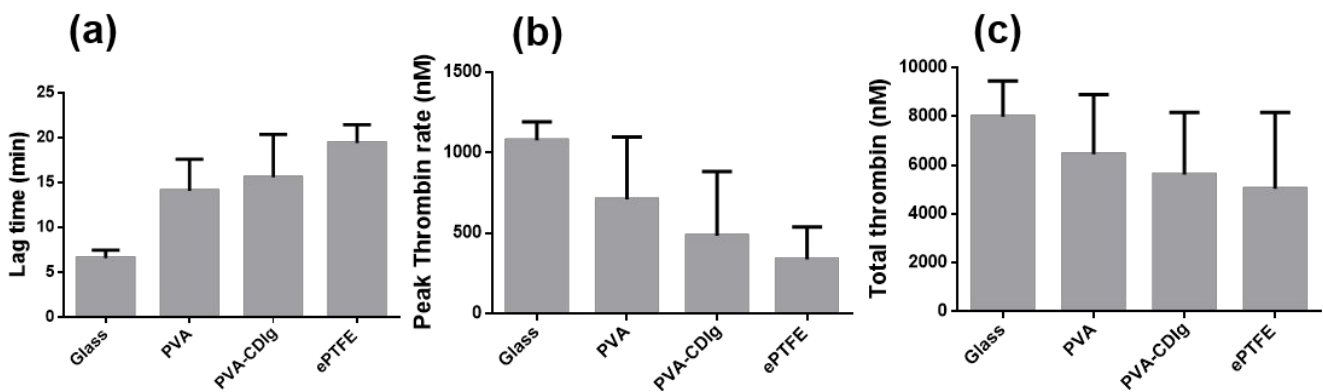


Fig S3. Thrombin formation assay in the presence of an external activator (lipids and tissue factor). Human donor platelet rich plasma collected after incubation with different samples for 1 hr was used to analyze the thrombin formation. (a) Lag-time, which represents time taken before the thrombin generation can be observed after the assay is started. Higher lag-time shows lower tendency of blood plasma to form thrombus (b) Peak thrombin formation (c) Total thrombin formed during the assay.

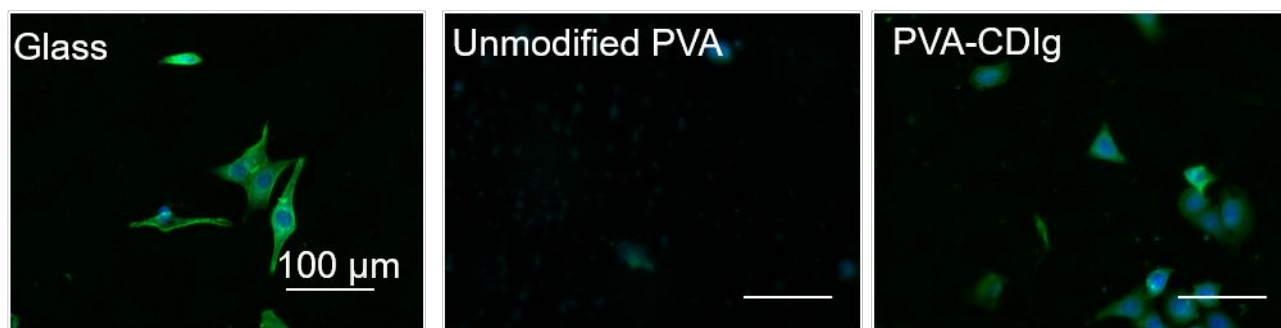


Fig S4. Gelatin conjugation on freeze-thaw PVA (10% PVA solution; 1 freeze-thaw cycle) hydrogel enhanced HUVECs adhesion compared to unmodified PVA hydrogel. The cells were fixed with 4% PFA 24 hrs after seeding and stained with DAPI (blue) and phalloidin

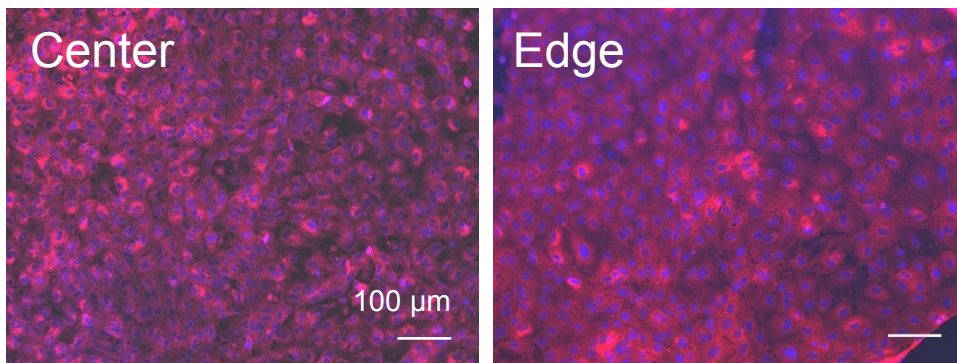


Fig S5: A typical low magnification image of HUVEC monolayer showing uniform cell attachment on gelatin conjugated PVA (PVA-CDIg) at the center and edge of the sample, which shows that the gelatin was uniformly distributed on the surface. Red: phalloidin; Blue: Dapi. Scale Bar = 100 $\mu$ m