

# THE LANCET

## Rheumatology

### Supplementary appendix

This appendix formed part of the original submission. We post it as supplied by the authors.

Supplement to: Moezinia CJ, Ji-Xu A, Azari A, Horlick S, Denton C, Stratton R. Iloprost for COVID-19-related vasculopathy. *Lancet Rheumatol* 2020; published online July 10. [https://doi.org/10.1016/S2665-9913\(20\)30232-0](https://doi.org/10.1016/S2665-9913(20)30232-0).

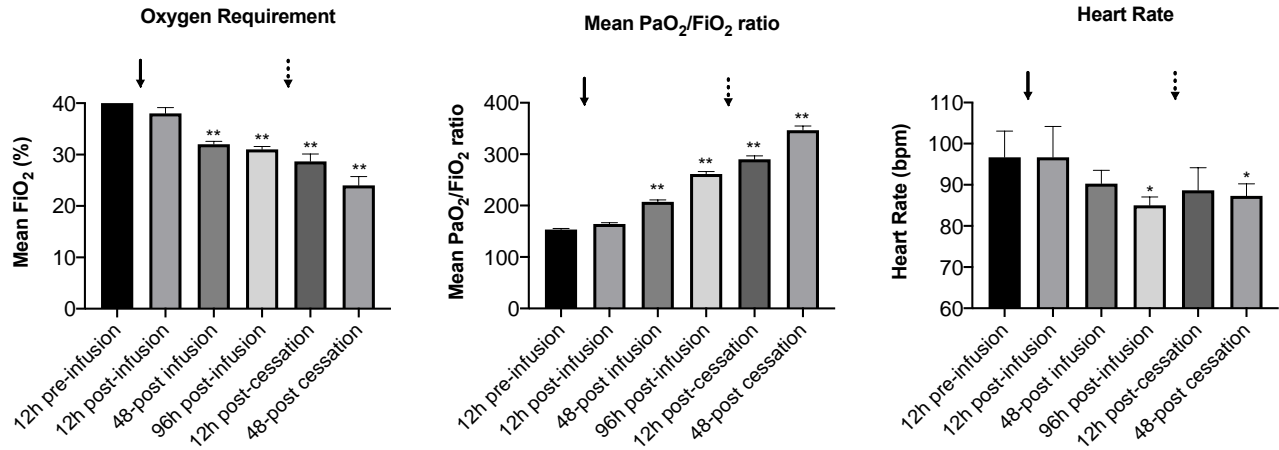
## Supplementary Appendix

Supplement to: Moezinia CJ, *et al.* Iloprost: a potential treatment for COVID-19 related vasculopathy.

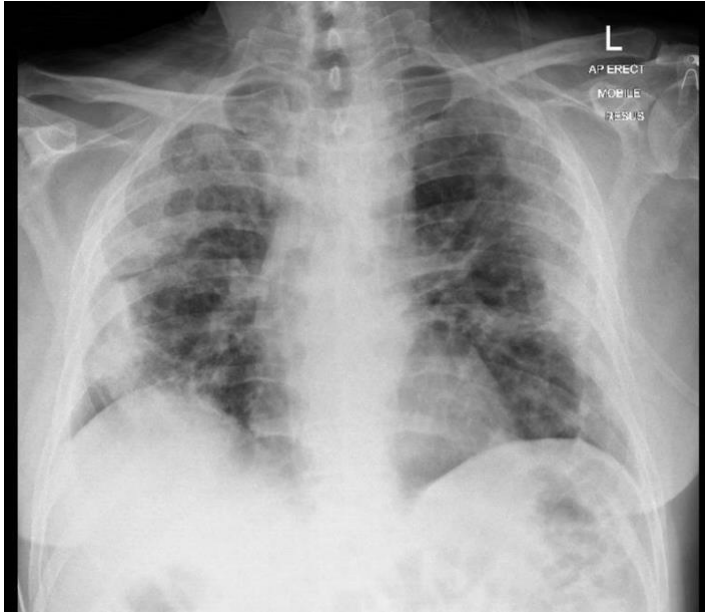
	Patient 1	Patient 2	Patient 3
<b>Demographics</b>			
Age, years	46	62	44
Sex	Male	Male	Male
Ethnicity	Caucasian	Caucasian	Afro-Caribbean
<b>Clinical findings</b>			
Co-morbidities	Morbid obesity Alcohol abuse	Morbid obesity Hypertension	Morbid obesity Hypothyroidism GORD
Concomitant treatment for COVID-19	IV co-amoxiclav Oral clarithromycin Prophylactic dose enoxaparin	IV co-amoxiclav Oral clarithromycin Prophylactic dose tinzaparin, switched to rivaroxaban on diagnosis of pulmonary embolus	IV co-amoxiclav Prophylactic dose tinzaparin
SOFA score on admission	5	6	7
Blood pressure on admission, mmHg	134/90	90/67	122/76
PaO <sub>2</sub> on admission (room air), kPa	8.11	8.44	8.23
O <sub>2</sub> saturation on admission on arterial gas (room air), %	92.7	92.8	92.7
FiO <sub>2</sub> required via Venturi mask, %	40	40	40
CRP on admission, mg/dL (normal range <6)	224	147	209
Imaging findings on admission	Extensive bilateral nodular densities with superimposing consolidation involving both lungs	Peripheral ground glass opacification throughout both lobes	Extensive bilateral peripheral patchy opacification
Day of admission on which iloprost infusion was initiated	2	9	2
PaO <sub>2</sub> /FiO <sub>2</sub> pre-iloprost, mmHg	152	158	154
PaO <sub>2</sub> /FiO <sub>2</sub> 5 days post-iloprost, mmHg	344	312	330
Adverse effects from treatment	None	Diarrhoea	None
Bleeding complications	None	None	None
Disease-related complications	None	Pulmonary embolus	None
Clinical outcome	Discharged on day 8	Discharged on day 22	Discharged on day 7

GORD=Gastro-oesophageal reflux disease. SOFA score=sequential organ failure assessment score.

**Supplementary Table: Demographic and clinical characteristics of three patients with COVID-19 treated with 5-day continuous iloprost infusion.**



**Supplementary Figure 1: Effects of a continuous 5-day infusion of iloprost therapy given to COVID-19 patients with peripheral ischaemia (n=3).** Data are mean values; errors bars indicate standard error of the mean. First arrow indicates when infusion was initiated. Second arrow indicates when infusion was stopped. \*= $p < 0.05$ , \*\*= $p < 0.01$ , compared to baseline values with a paired t-test. PaO<sub>2</sub>=partial pressure of oxygen in arterial blood. FiO<sub>2</sub>=fractional concentration of oxygen in inspired air. bpm=beats per minute.



***Supplementary Figure 2:*** Chest radiograph of one patient from the study on admission showing bilateral peripheral patchy opacification consistent with COVID-19.