

Supplementary Online Content

Girotra S, Nallamotheu BK, Tang Y, Chan PS, et al; American Heart Association Get With The Guidelines–Resuscitation Investigators. Association of hospital-level acute resuscitation and postresuscitation survival with overall risk-standardized survival to discharge for in-hospital cardiac arrest. *JAMA Netw Open*. 2020;3(7):e2010403. doi:10.1001/jamanetworkopen.2020.10403

eFigure 1. Study Cohort

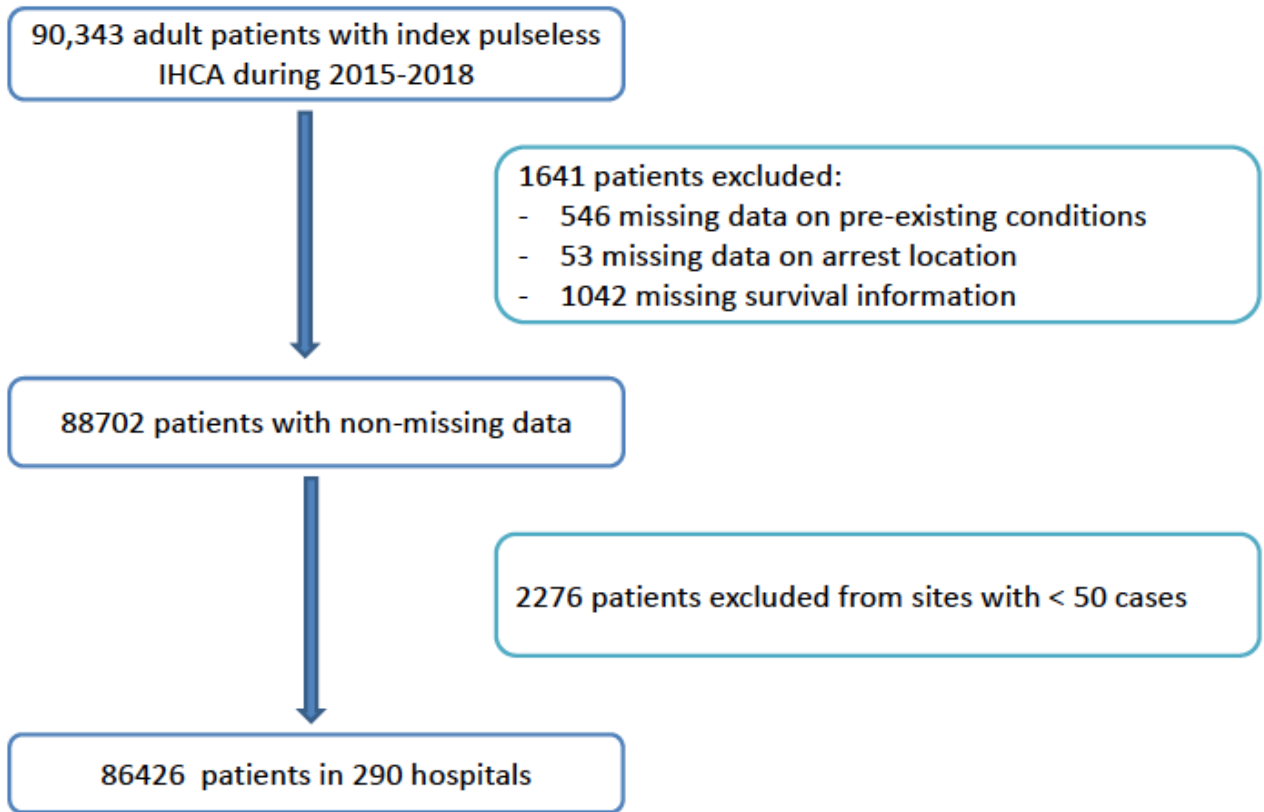
eFigure 2. Hospital Variation in Overall Risk-Standardized Survival (RSSR) to Discharge

eFigure 3. Hospital Variation in Risk-Adjusted Rate of Acute Resuscitation Survival

eFigure 4. Hospital Variation in Risk-Adjusted Rate of Postresuscitation Survival

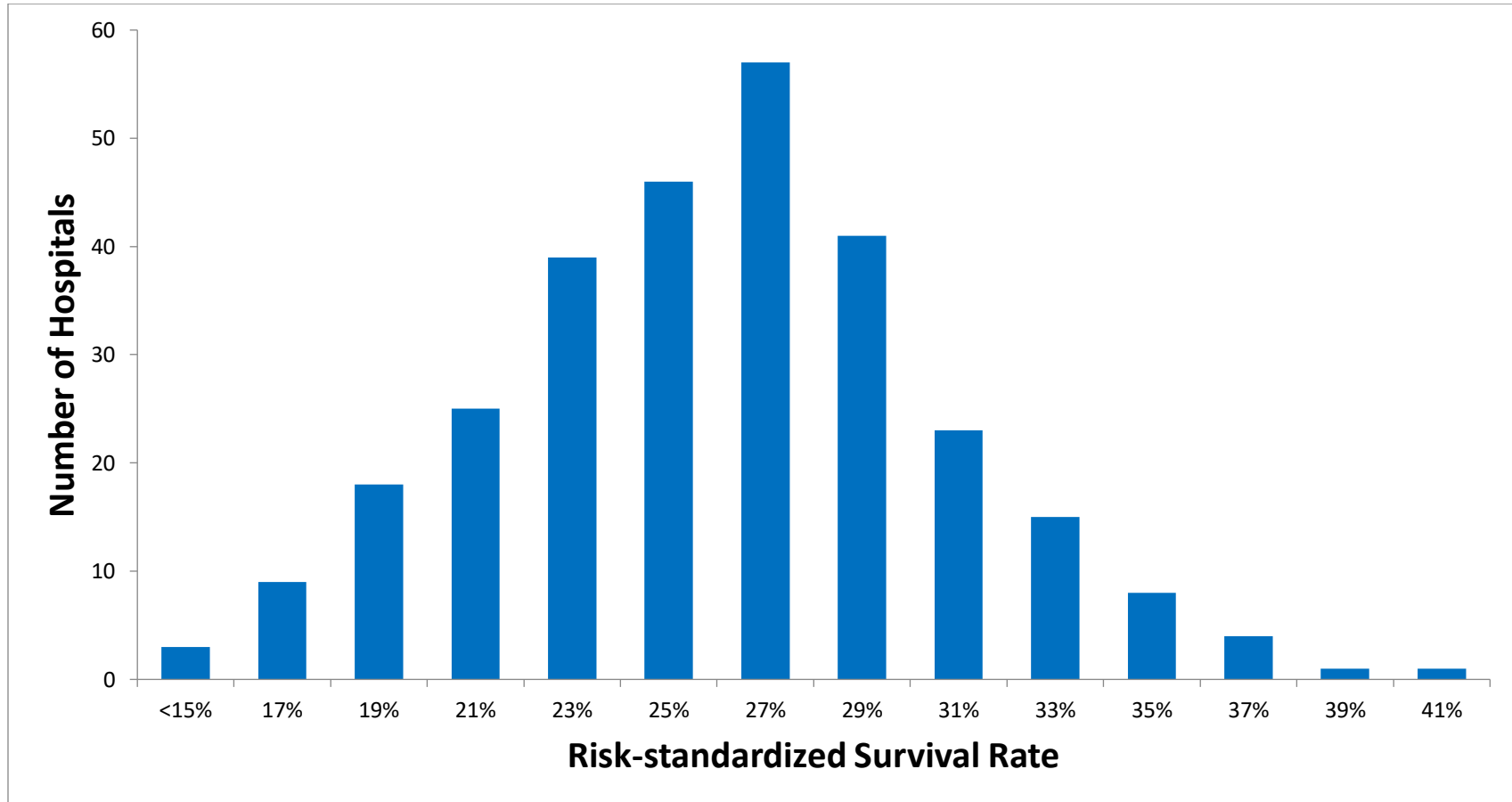
This supplementary material has been provided by the authors to give readers additional information about their work.

eFigure 1. Study Cohort



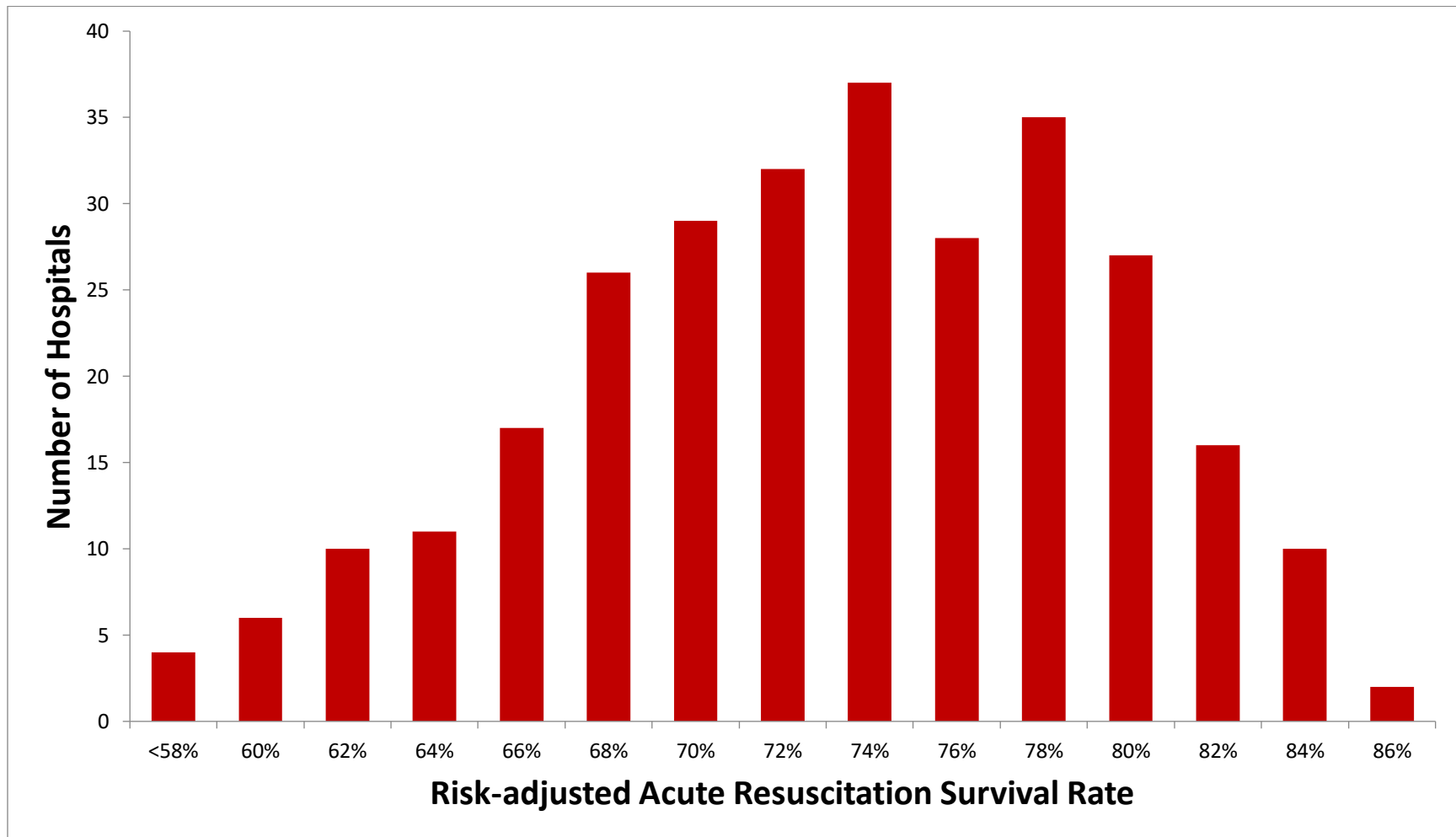
eFigure 2. Hospital Variation in Overall Risk-Standardized Survival (RSSR) to Discharge

The median risk-standardized survival to discharge was 25.1% (inter-quartile range: 21.9%-27.7%; range:14.1%-40.8% median odds ratio 1.36; 95% CI: 1.31-1.40).



eFigure 3. Hospital Variation in Risk-Adjusted Rate of Acute Resuscitation Survival

The median risk-adjusted rate of acute resuscitation survival was 72.4% (inter-quartile range: 67.9%-76.9%; range: 46.0%-84.7%; median OR 1.40; 95% CI 1.35-1.45)



eFigure 4. Hospital Variation in Risk-Adjusted Rate of Postresuscitation Survival

The median risk-adjusted rate of post resuscitation survival was 34.0% (inter-quartile range: 31.5%-37.7%; range: 21.4%-50.4%; median OR 1.35 95% CI 1.30-1.40)

