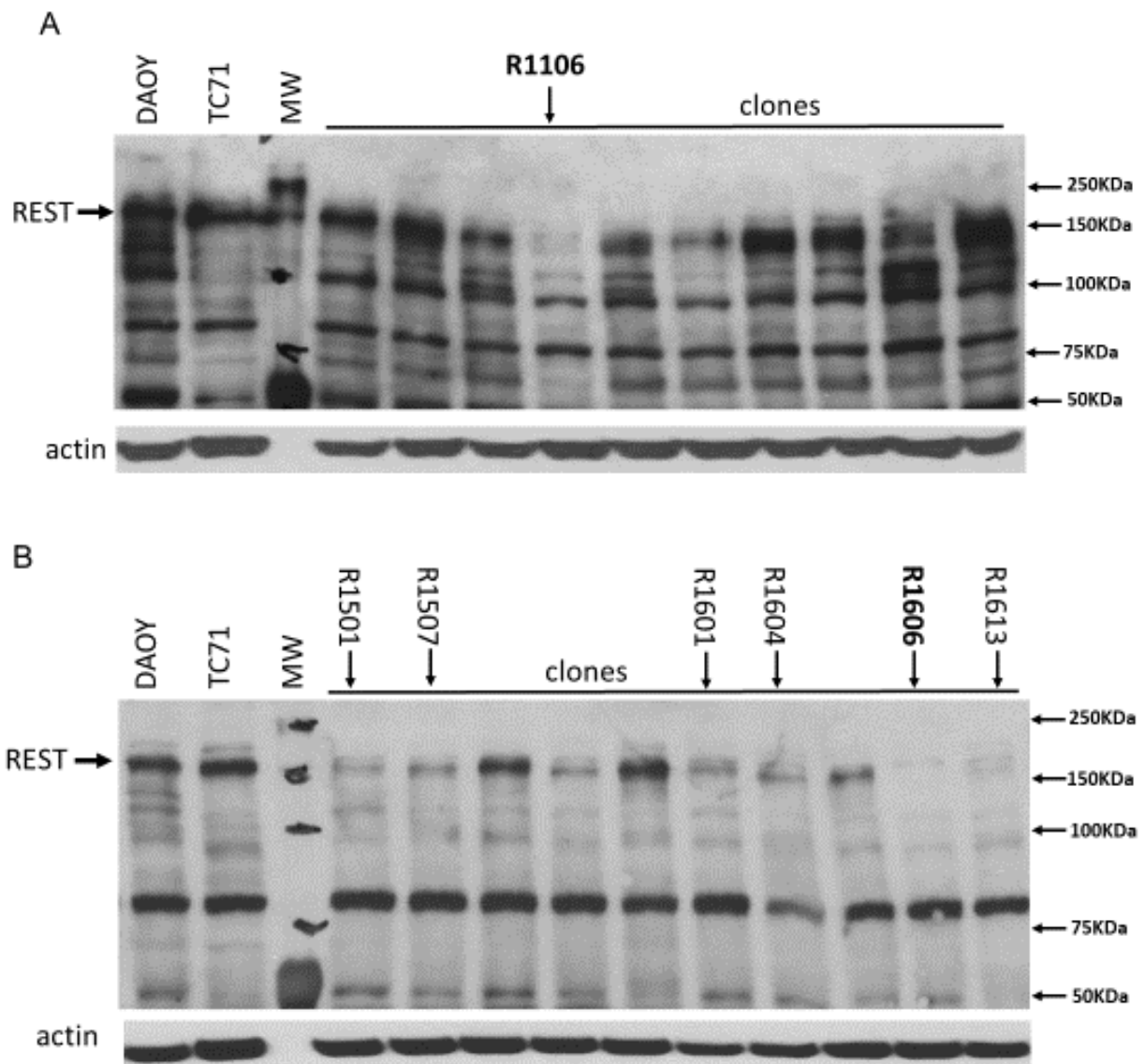


# Supplemental Materials: Neuronal Repressor REST Controls Ewing Sarcoma Growth and Metastasis by Affecting Vascular Pericyte Coverage and Vessel Perfusion

Zhichao Zhou, Yuanzheng Yang, Fei Wang and Eugenie S. Kleinerman



**Figure 1.** Representative WB analysis of CRISPER Clones from (A) single transfection of sgRNA and (B) double transfection of sgRNAs. Lanes pointed by arrow show REST knockout clones.

