

Supplementary Materials

The combination of loss of ALDH1L1 function and phenformin treatment decreases tumor growth in *KRAS*-driven lung cancer

Seon-Hyeong Lee, Yoon Jeon, Joon Hee Kang, Hyonchol Jang, Ho Lee and Soo-Youl Kim

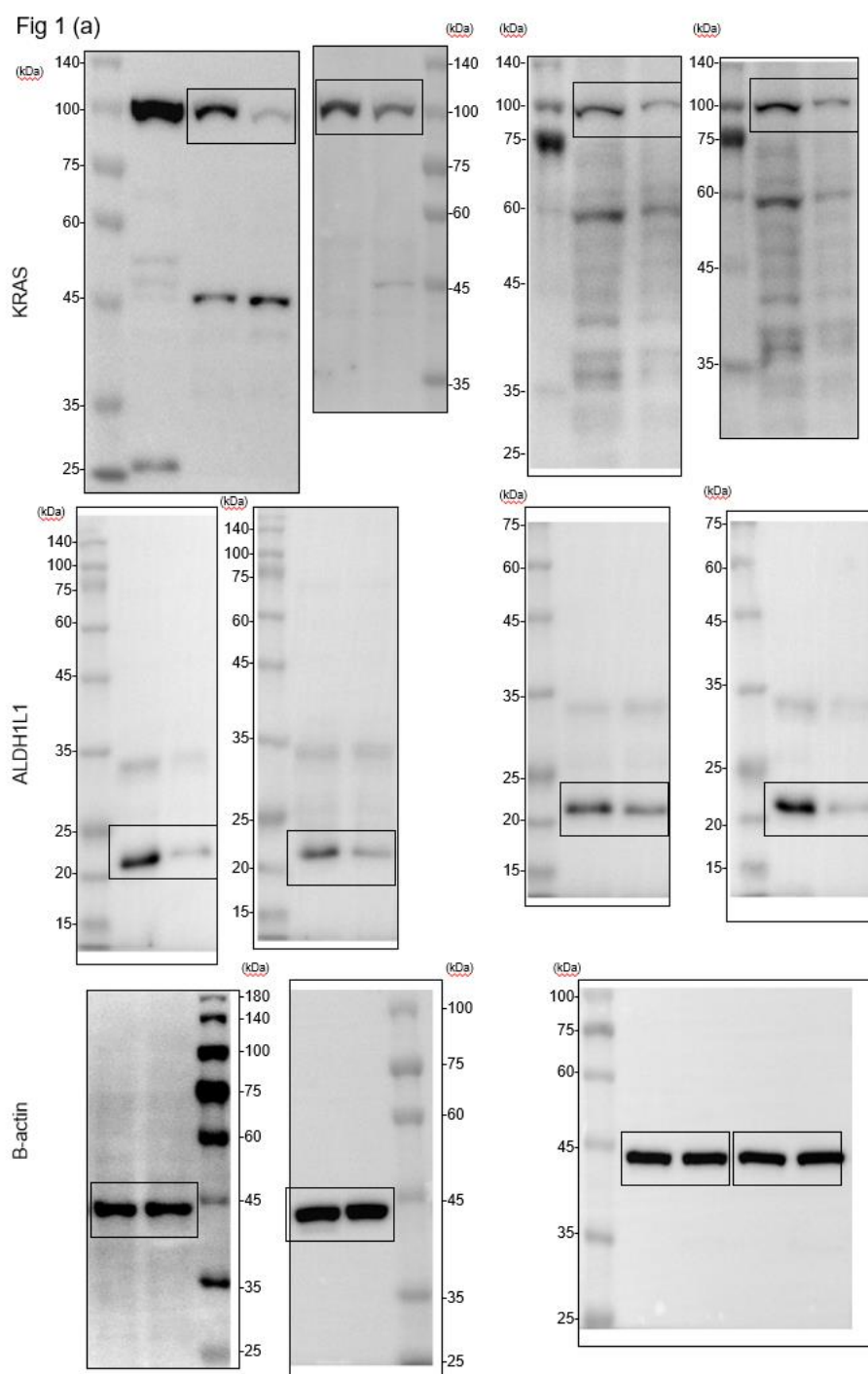


Figure S1. Detailed information about western blot in Figure 1.

Fig 3 (a)

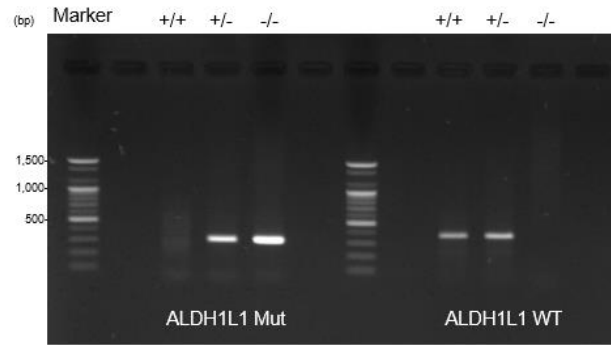


Fig 3 (b)

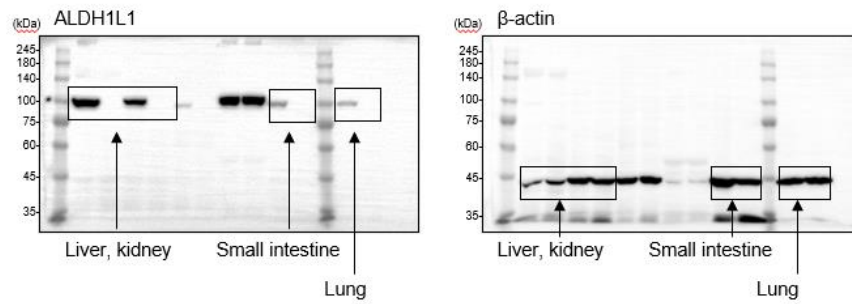


Figure S2. Detailed information about western blot in Figure3.



© 2020 by the authors. Licensee MDPI, Basel, Switzerland. This article is an open access article distributed under the terms and conditions of the Creative Commons Attribution (CC BY) license (<http://creativecommons.org/licenses/by/4.0/>).