

Thraustochytrids Biomass

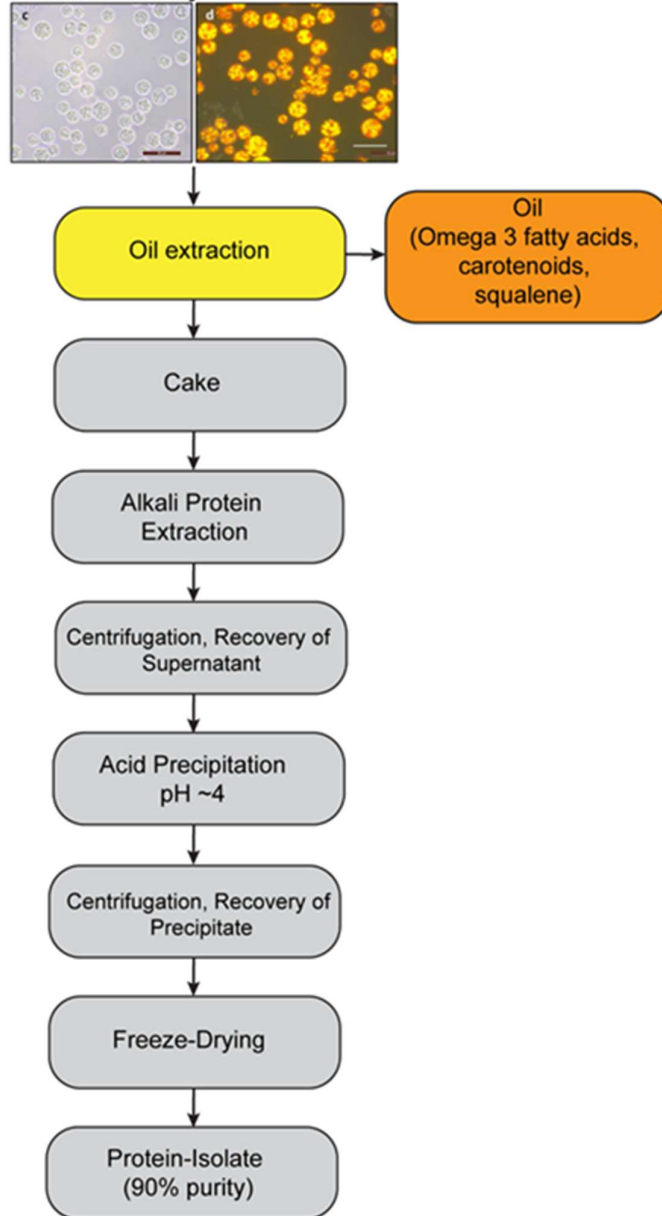
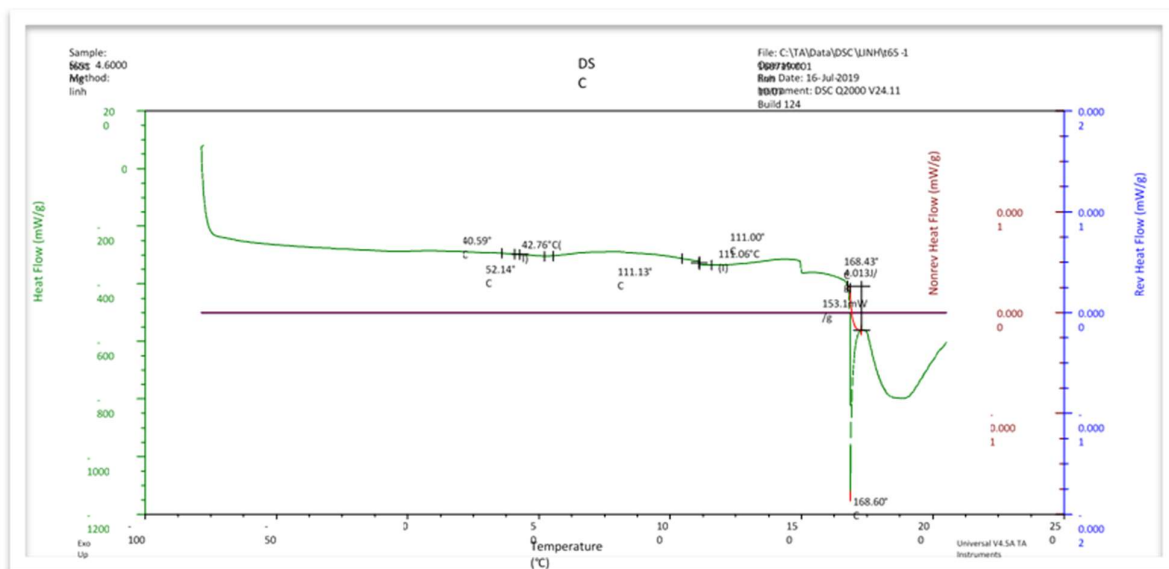


Figure S1. Schematic process flow diagram used to extract oil and TPI from cultured thraustochytrids cells.

(A)



(B)

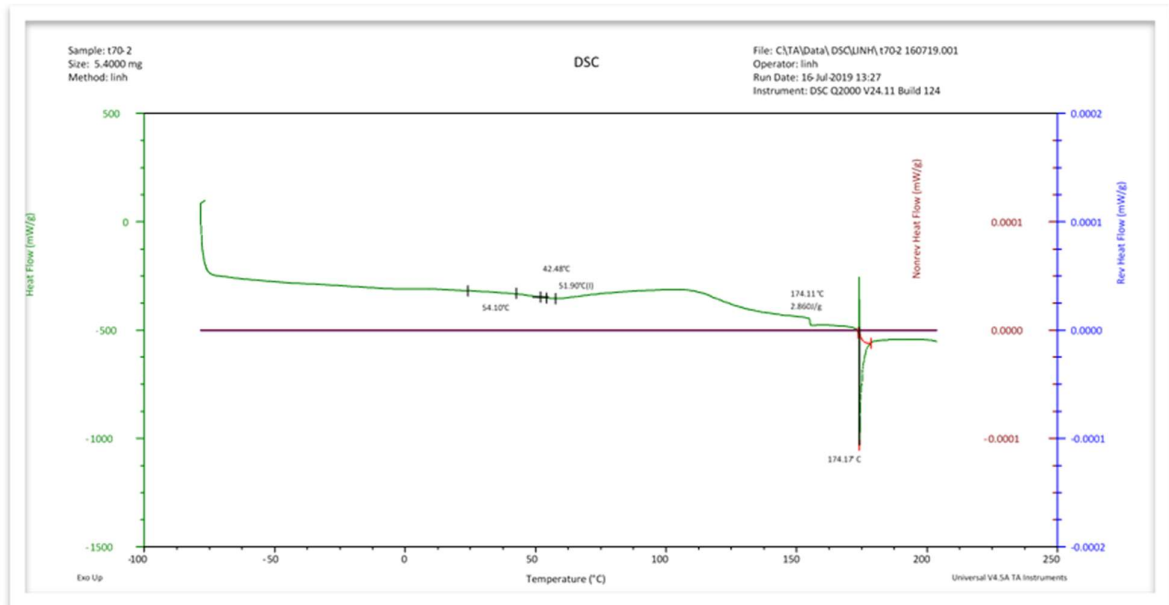


Figure S2. Differential scanning calorimetry (DSC) of TPI. (A) MAN65; (B) MAN70.

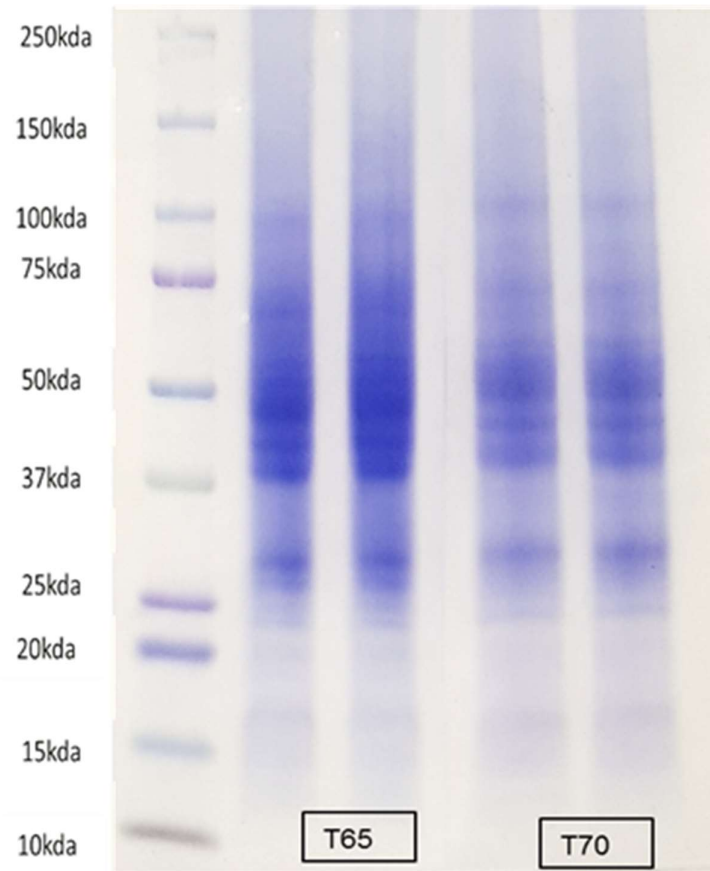


Figure S3. SDS-PAGE electrophoresis of thraustochytrids protein isolate obtained from its two strains MAN65 (A) and MAN70 (B).