

**Stem Cell Reports, Volume 14**

**Supplemental Information**

**Fibronectin Patches as Anchoring Points for Force Sensing and Transmission in Human Induced Pluripotent Stem Cell-Derived Pericytes**

**Olga Iendaltseva, Valeria V. Orlova, Christine L. Mummery, Erik H.J. Danen, and Thomas Schmidt**

## Supplemental information

Figure S1

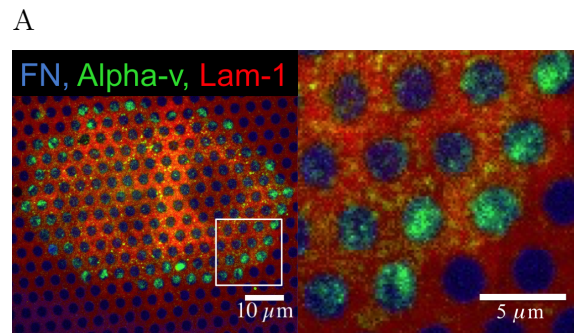


Figure S1: PCs (dif31) placed on a pattern of FN and LM-111 depicted in (Fig. 1 B) with alpha-v integrin labeled (green). Related to Figure 1.

Figure S2

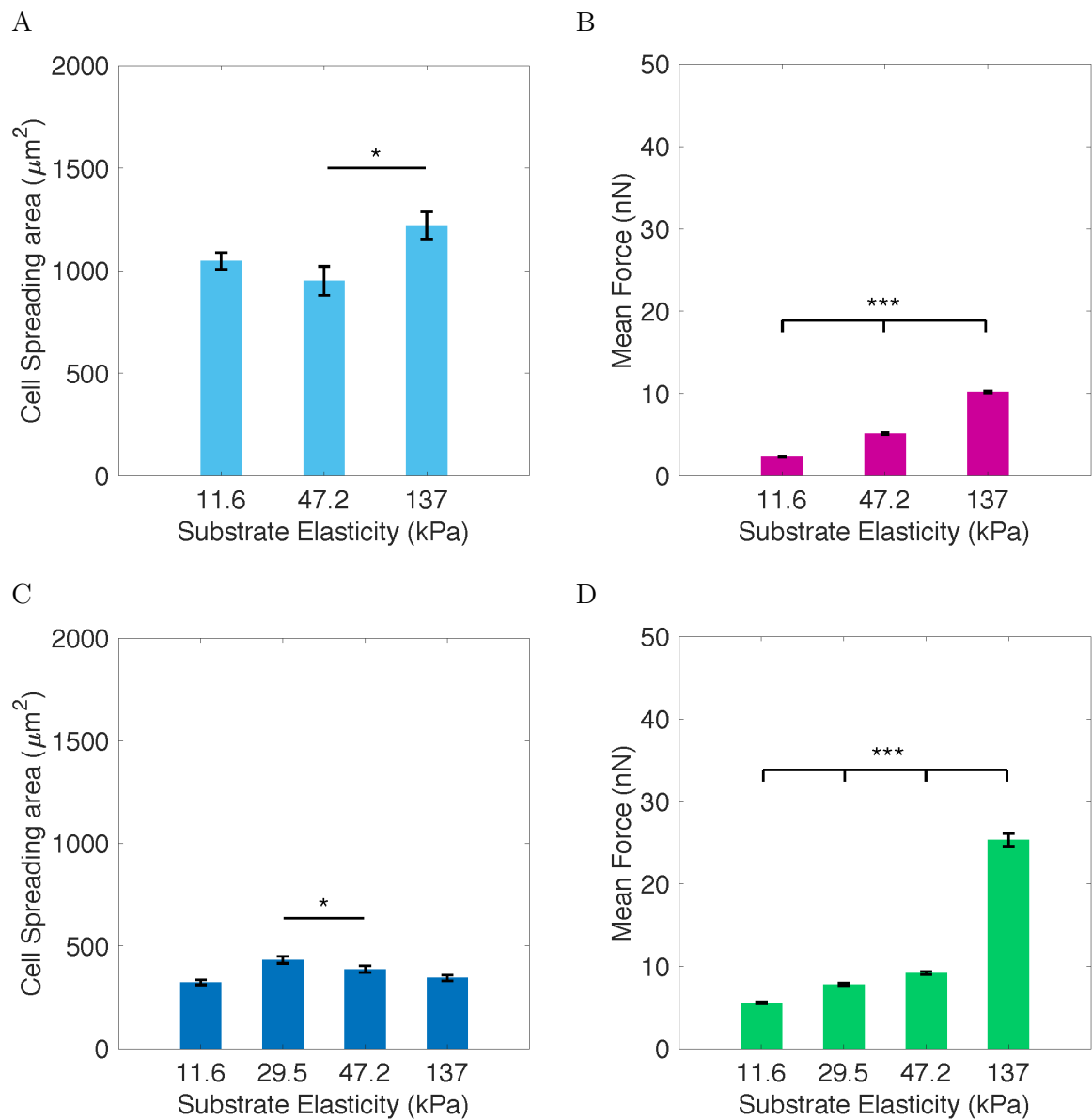


Figure S2: SV80 and 3T3 cells average spreading area and force application. (A) SV80 average cell spreading area on PDMS micropillar arrays after 4 hours incubation. (B) SV80 average force application measured after 4 hours incubation. (C) 3T3 average cell spreading area on PDMS micropillar arrays functionalized with FN after 4 hours incubation. (D) 3T3 average force application measured after 4 hours incubation. All error bars are s.e.m. derived from three independent experiments performed in minimum two replicates. At least 30 cells were analyzed from each sample. NS,  $P > 0.05$ ; \* $P < 0.05$ ; \*\* $P < 0.005$ ; \*\*\* $P < 0.0005$  according to Mann - Whitney test. Related to Figure 3.

Figure S3

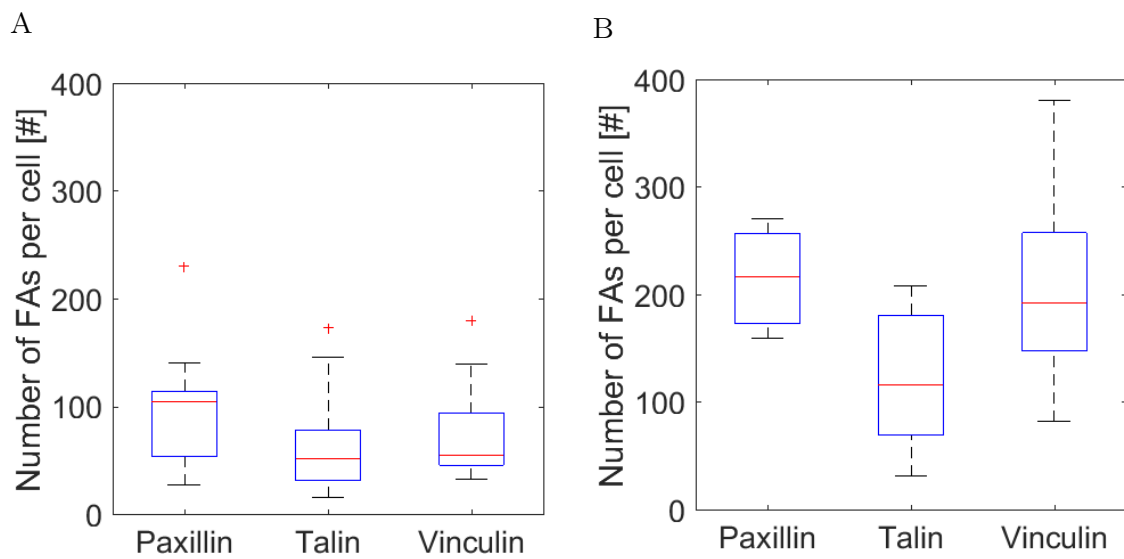


Figure S3: (A) Number of FAs per cell for PCs seeded on 137 kPA micropillar arrays stamped with FN. (B) Number of FAs per cell for PCs seeded on 47,2 kPA micropillar array stamped with FN. Results were obtained after 4 hours incubation from three independent experiments performed in minimum two replicates. At least 30 cells were analyzed from each sample. NS,  $P > 0.05$ ;  $*P < 0.05$ ;  $**P < 0.005$ ;  $***P < 0.0005$  according to Mann - Whitney test. Related to Figure 4.

Figure S4

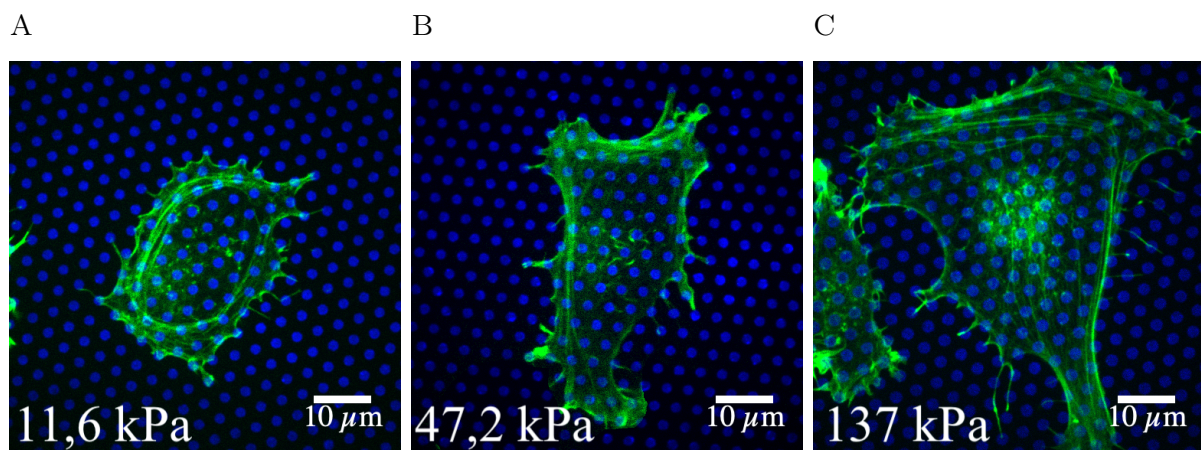


Figure S4: Representative images of the actin cytoskeleton organization of SV80 cells (green) seeded on PDMS micropillar arrays of various stiffness stamped with FN (blue): (A) 11,6 kPa, (B) 47,2 kPa, (C) 137 kPa. Related to Figure 5.