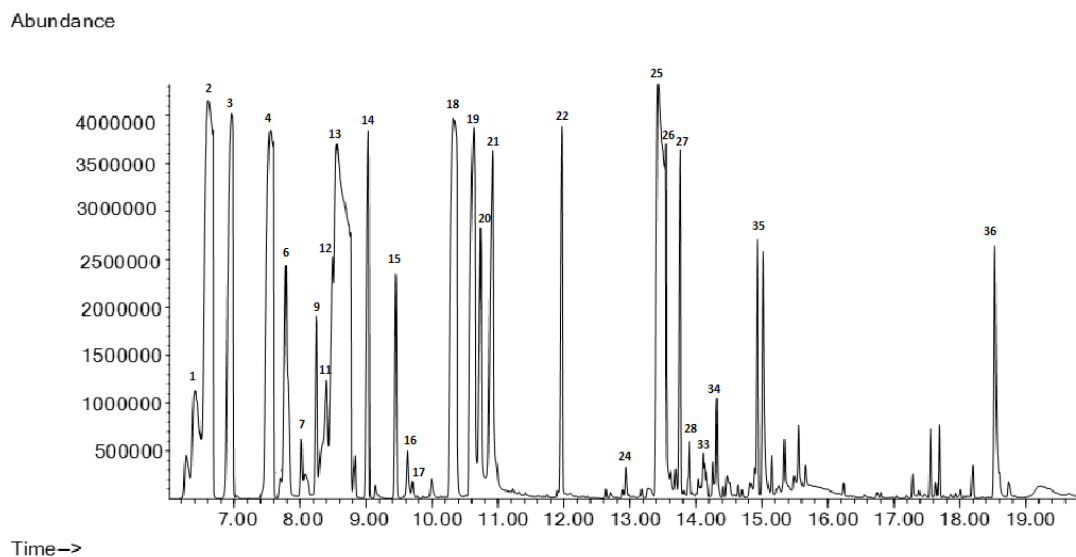
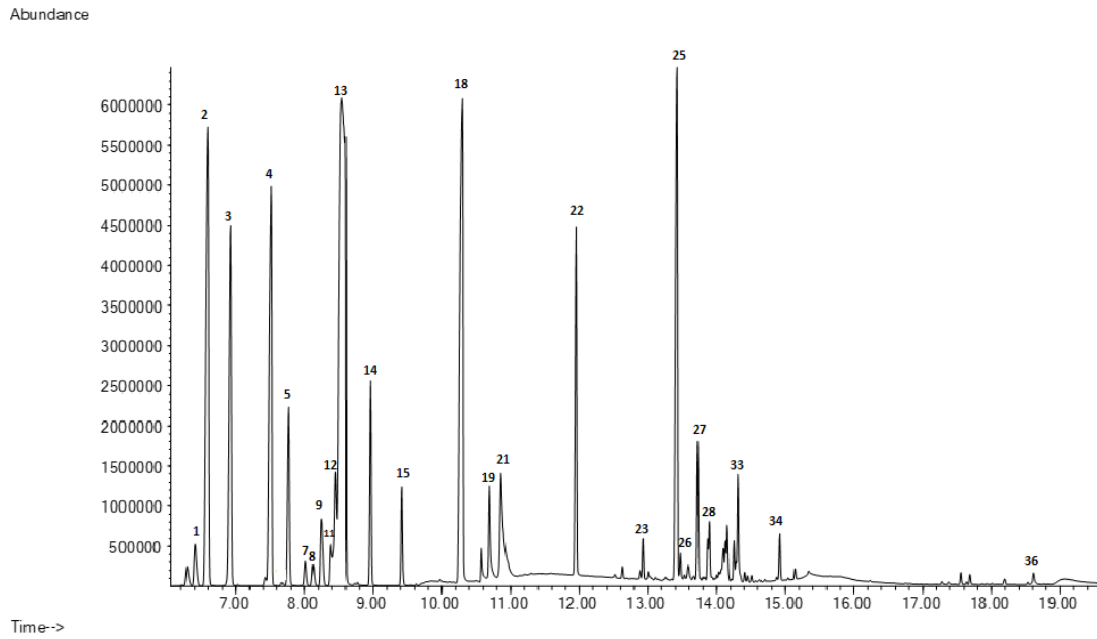


## SUPPLEMENTARY MATERIALS



**Figure S1.** Chromatogram of *S. rosmarinus* essential oil from Ionian coast (sample R1). 1. Thujene (Retention time, Rt: 6.40 min); 2.  $\alpha$ -Pinene (Rt: 6.60 min); 3. Camphene (Rt: 6.96 min); 4.  $\beta$ -Pinene (Rt: 7.75); 6. Sabinene (RT: 7.78); 7.  $\alpha$ -Phellandrene (RT: 8.02 min); 9.  $\alpha$ -Terpinene (Rt: 8.24 min); 11. *p*-Cymene (Rt: 8.40 min); 12. Limonene (Rt: 8.47 min); 13. 1,8-Cineole (Rt: 8.56 min); 14.  $\gamma$ -Terpinene (Rt: 9.03 min); 15. Terpinolene (Rt: 9.44 min); 16. Linalool (RT: 9.62 min); 17.  $\alpha$ -Thujone (RT: 9.70 min); 18. Camphor (Rt: 10.33 min); 19. Borneol (Rt: 10.63 min); 20. Terpinen-4-ol (Rt: 10.73 min); 21.  $\alpha$ -Terpineol (Rt: 10.91 min); 22. (-)-Bornyl acetate (Rt: 11.96 min); 24.  $\alpha$ -Copaene (Rt: 12.93); 25. *trans*-Caryophyllene (Rt: 13.43 min); 26. Aromadendrene (Rt: 13.51 min); 27.  $\alpha$ -Humulene (Rt: 13.76 min); 28.  $\gamma$ -Muurolene (Rt: 13.90 min); 33.  $\delta$ -Cadinene (Rt: 14.31 min); 34. Caryophyllene oxide (Rt: 14.47 min); 35. Viridiflorol (Rt: 15.02 min); 36. Manool (Rt: 18.53 min).



**Figure S2.** Chromatogram of *S. rosmarinus* essential oil from Tyrrhenian coast (sample R2). 1. Thujene (Retention time, Rt: 6.40 min); 2.  $\alpha$ -Pinene (Rt: 6.59 min); 3. Camphene (Rt: 6.92 min); 4.  $\beta$ -Pinene (Rt: 7.51); 5. Myrcene (Rt: 7.76 min); 7.  $\alpha$ -Phellandrene (Rt: 8.02 min); 9.  $\alpha$ -Terpinene (Rt: 8.24 min); 11. *p*-Cymene (Rt: 8.38 min); 12. Limonene (Rt: 8.45 min); 13. 1,8-Cineole (Rt: 8.54 min); 14.  $\gamma$ -Terpinene (Rt: 8.96 min); 15. Terpinolene (Rt: 9.42 min); 18. Camphor (Rt: 10.30 min); 19. Borneol (Rt: 10.68 min); 21.  $\alpha$ -Terpineol (Rt: 10.86 min); 22. (-)-Bornyl acetate (Rt: 11.95 min); 23.  $\alpha$ -Cubebene (Rt: 12.93); 25. *trans*-Caryophyllene (Rt: 13.42 min); 26. Aromadendrene (Rt: 13.45 min); 27.  $\alpha$ -Humulene (Rt: 13.72 min); 28.  $\gamma$ -Muurolene (Rt: 13.87 min); 33.  $\delta$ -Cadinene (Rt: 14.31 min); 34. Caryophyllene oxide (Rt: 14.91 min); 36. Manool (Rt: 18.51 min).

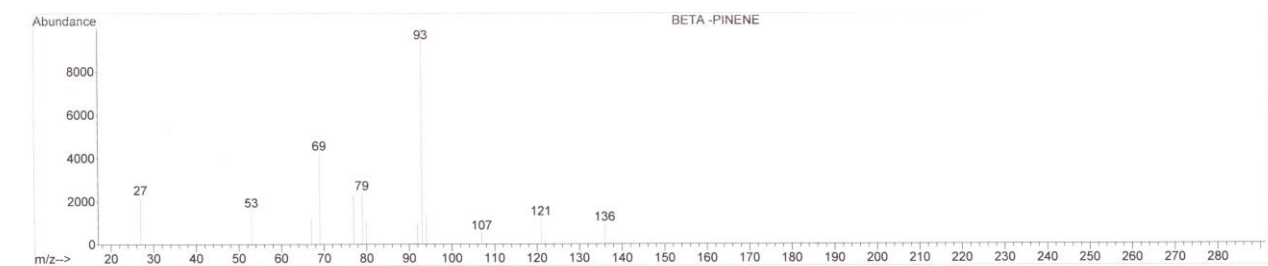
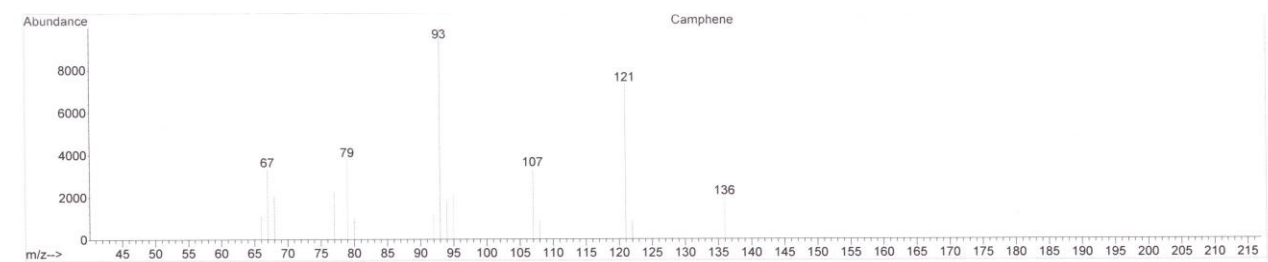
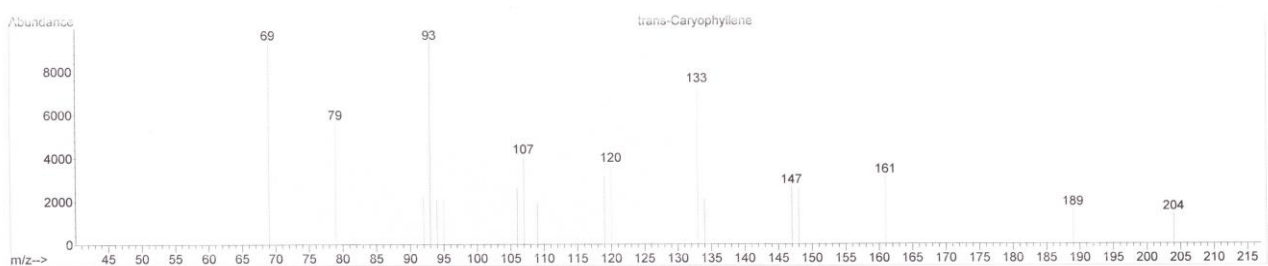
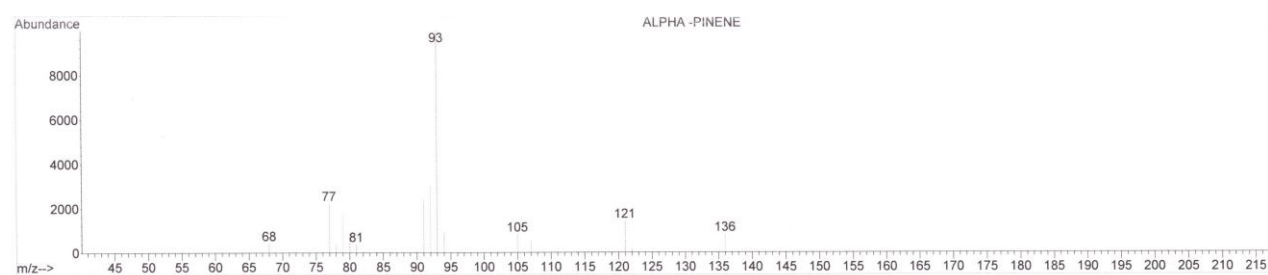
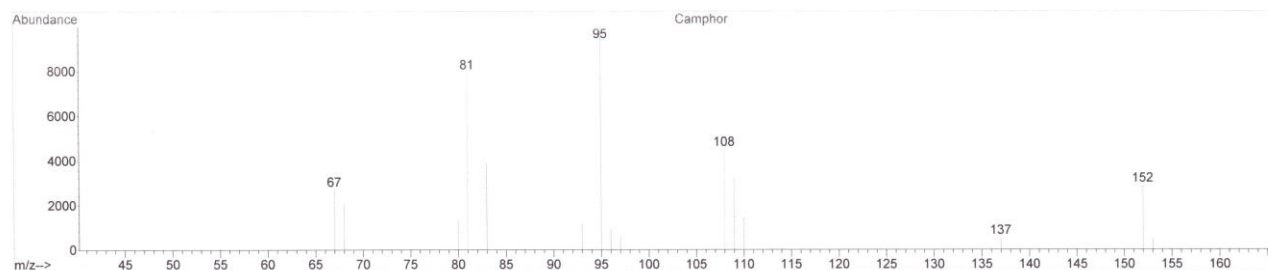
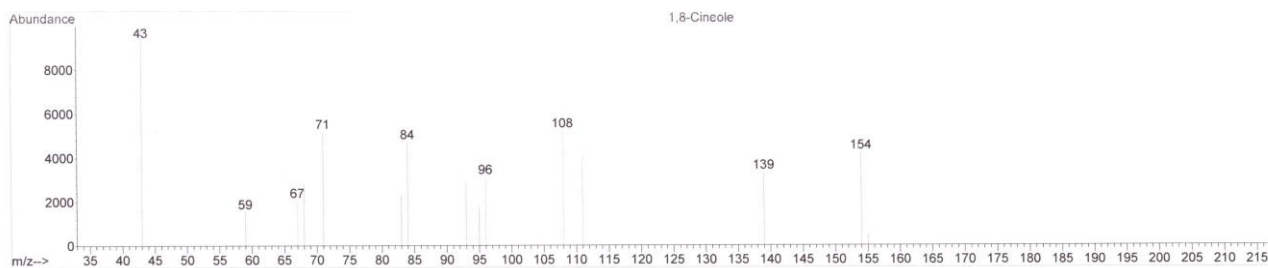


Figure S3. Mass spectra of the most representative constituents of rosemary essential oil.