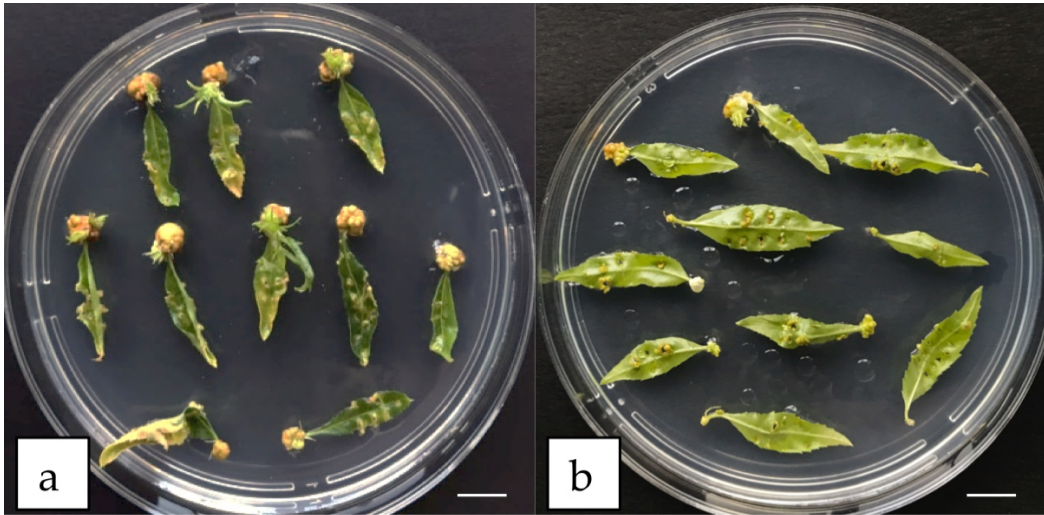


Supplementary figure 1. Caulogenesis and leaf regeneration from Hansen 536 explants placed on WPM 1 - WPM 20 (a - t) media after five weeks from the beginning of the experiment (bar = 1 cm).



Supplementary figure 2. Hansen 536 leaf explants after five weeks of culture with the abaxial side (a) or the adaxial side (b) on WPM11 medium (bar = 1 cm).