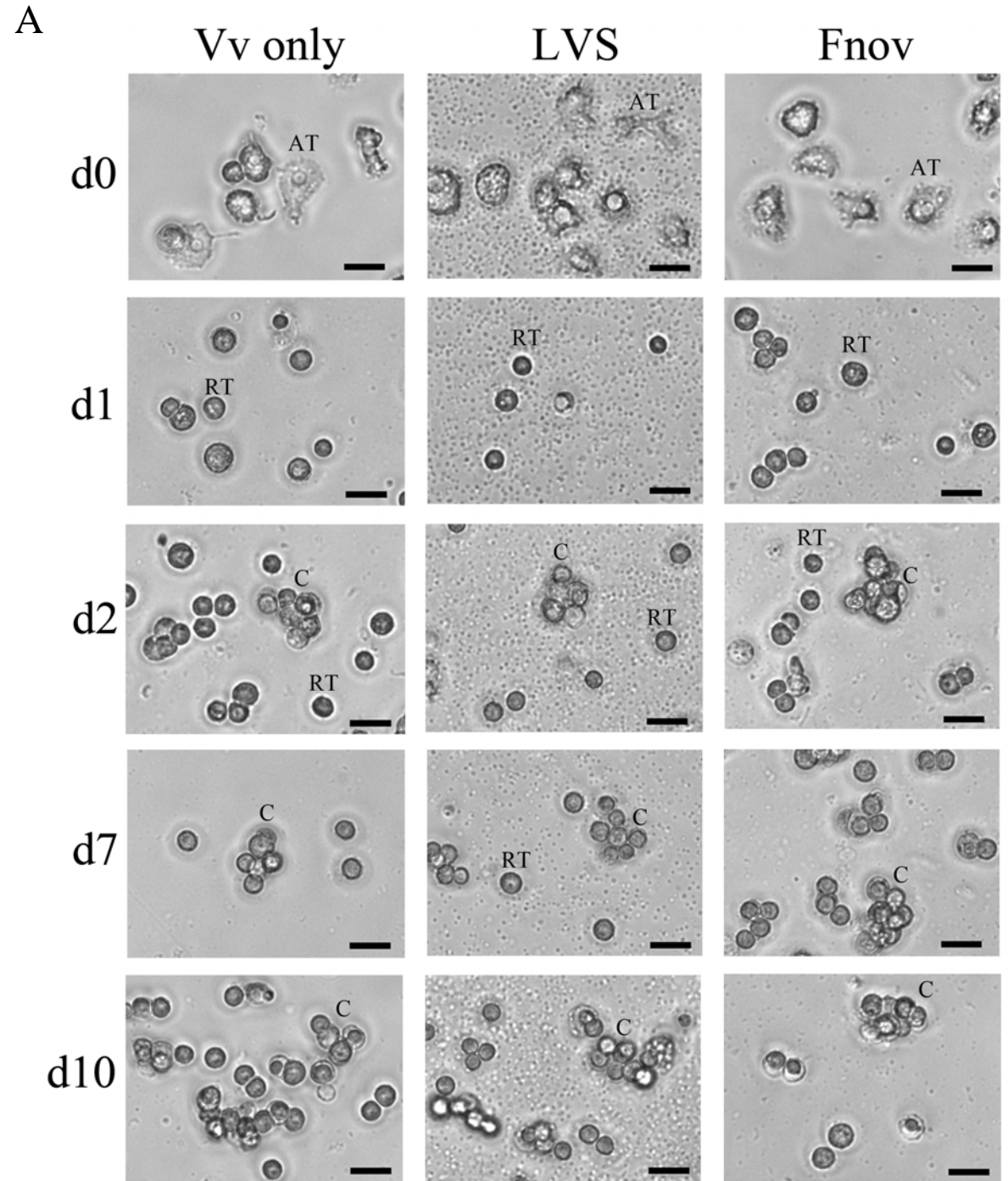


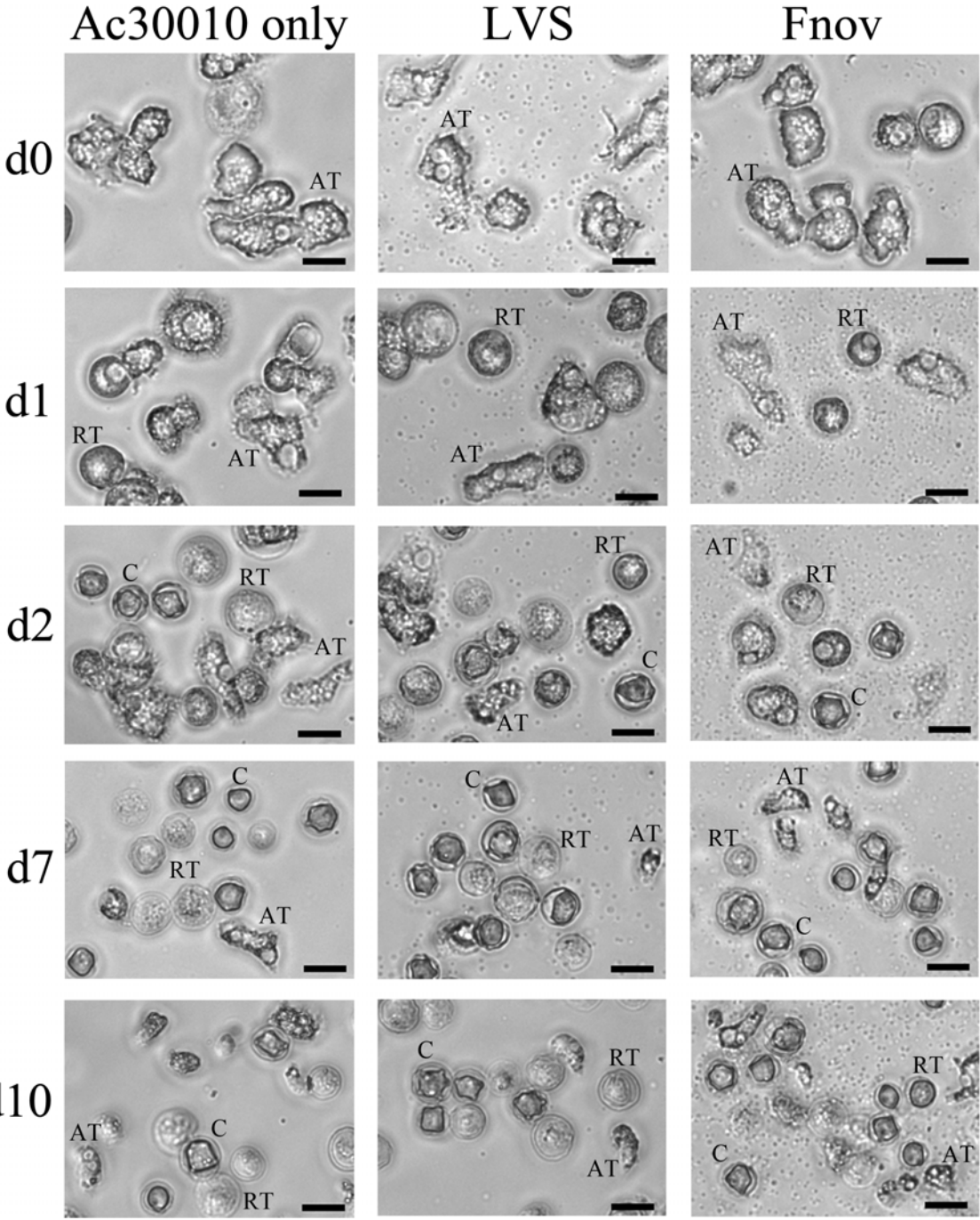
SFigure 1

SFigure 1. Phase contrast microscopic images of FLA cultures with and without the presence of *Francisella* bacteria. The FLA Vv (A), Ac30010 (B), and Ac30234 (C) were infected with a MOI of 100 with LVS or Fnov cells and incubated at 30 °C. Images were taken at each time point (day 0, 1, 2, 7, and 10) are representative of two independent experiments with three replicates each (n=6). Black scale bars represent 20 microns in length. AT, amorphous trophozoite. RT, rounded trophozoite. C, cyst.



SFigure 1

B



SFigure 1

