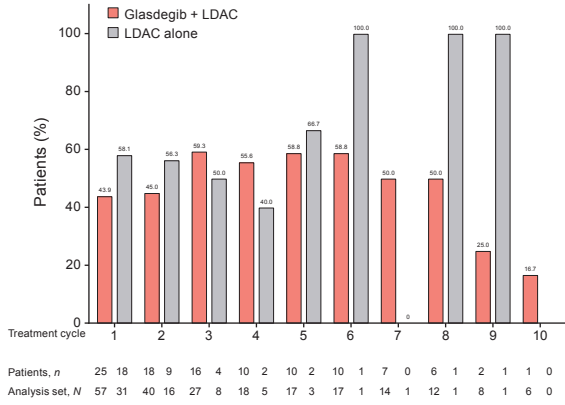


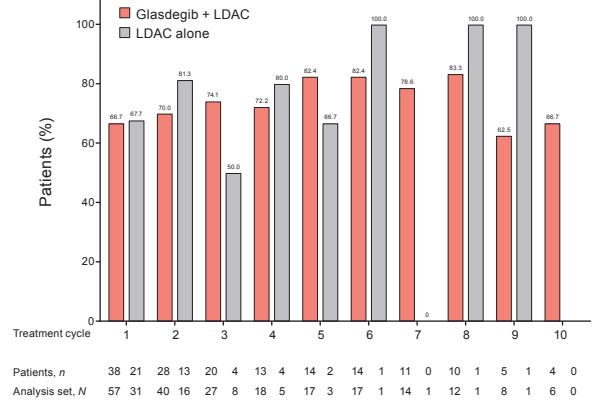
Fig S4. Blood count recovery in patients who did not achieve CR. Percentage of patients with **a.** ANC **b.** hemoglobin **c.** platelets recovery during cycles one to ten. One threshold measurement was required; all patients were included regardless of their BL levels but each cycle only included remaining patients at risk in that cycle. Analysis set, N = number of patients with ANC results in the cycle; patients, n = number of patients meeting recovery criteria in the cycle. Abbreviations: ANC, absolute neutrophil count; BL, baseline; CR, complete remission; LDAC, low-dose cytarabine.

a

ANC \geq 1000/ μ l

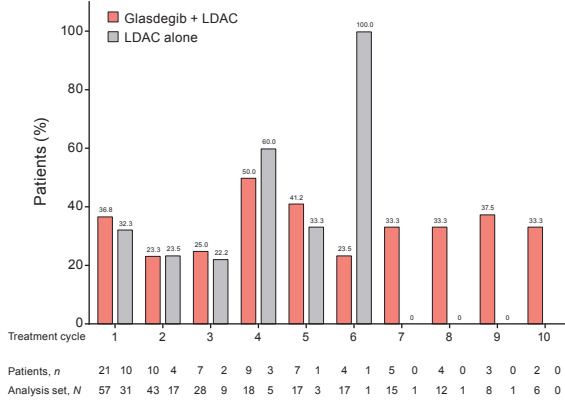


ANC \geq 500/ μ l

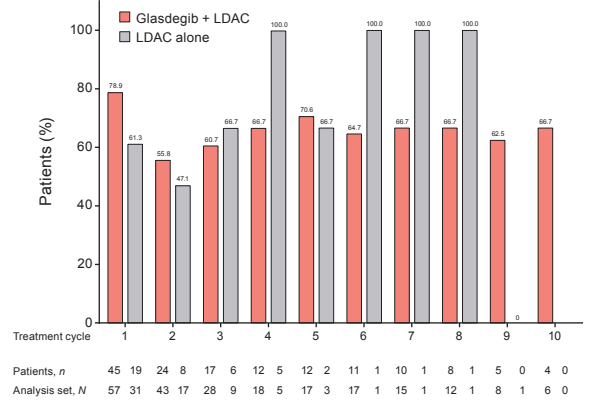


b

Hemoglobin \geq 10 g/dl

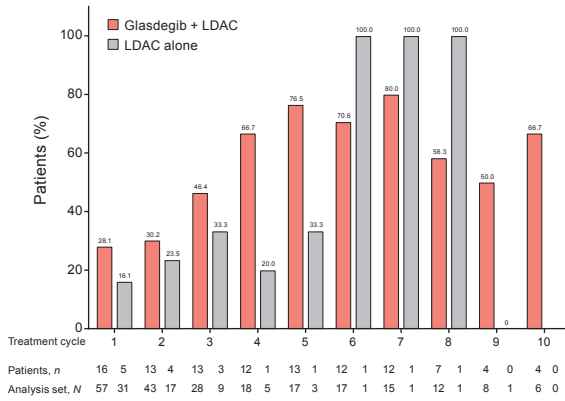


Hemoglobin \geq 9 g/dl



c

Platelets \geq 100,000/ μ l



Platelets \geq 50,000/ μ l

