

Fig. S1

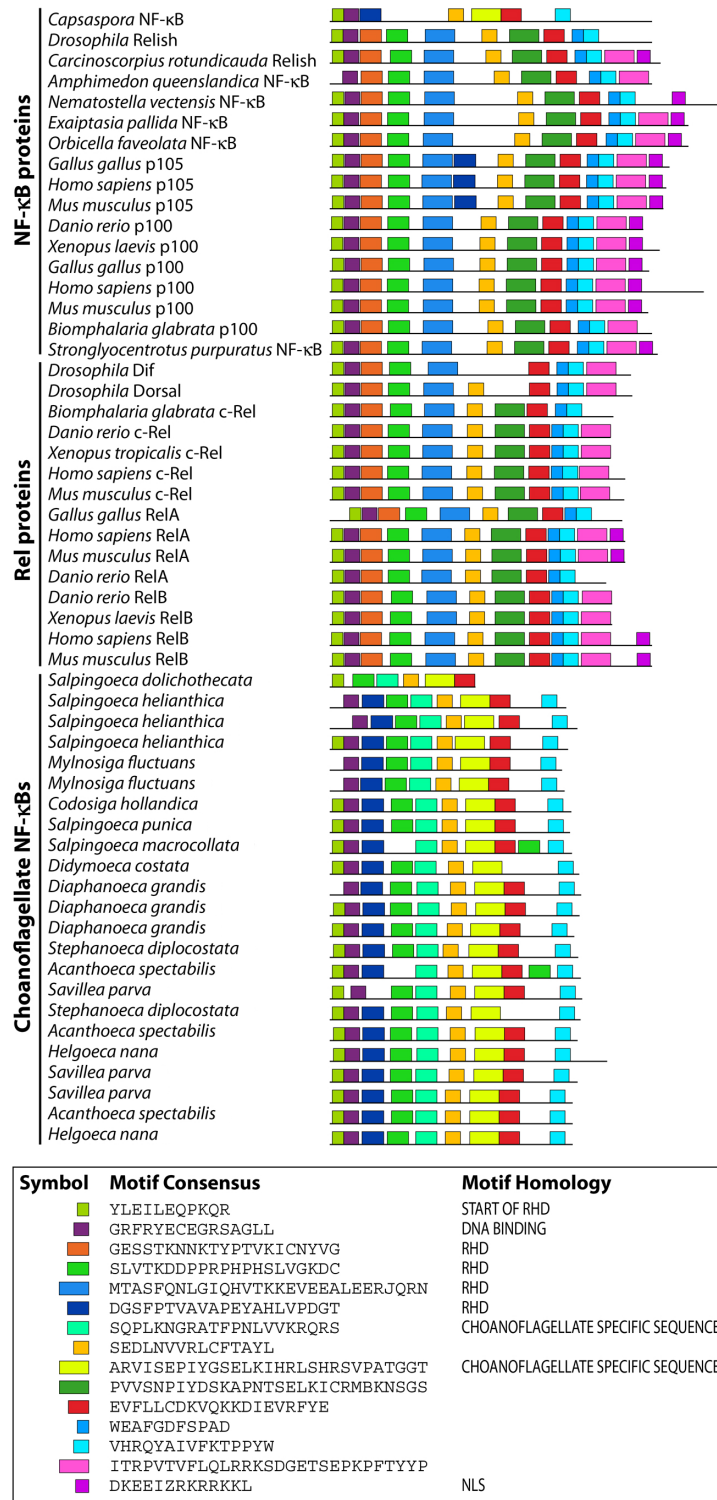


Figure S1. Motif analysis of NF-κB and Rel proteins. MEME analysis was performed on each sequence to identify shared motifs. Conserved motifs are highlighted and two choanoflagellate specific sequences are labeled and shown in teal and yellow.

Fig. S2


Caspase consensus sequence	D-X-X-D-  A/G/S/T
Capsaspora	aa635-E-N-G-D-S-aa639
Relish	aa541-L-Q-H-D-G-aa546

Figure S2. Alignment of putative caspase cleavage sites. The consensus sequence for caspase cleavage is aligned with the known site of DREDD cleavage in *Drosophila* Relish and with a putative caspase site in *Capsaspora* NF- κ B. The site of cleavage is marked by a red triangle.