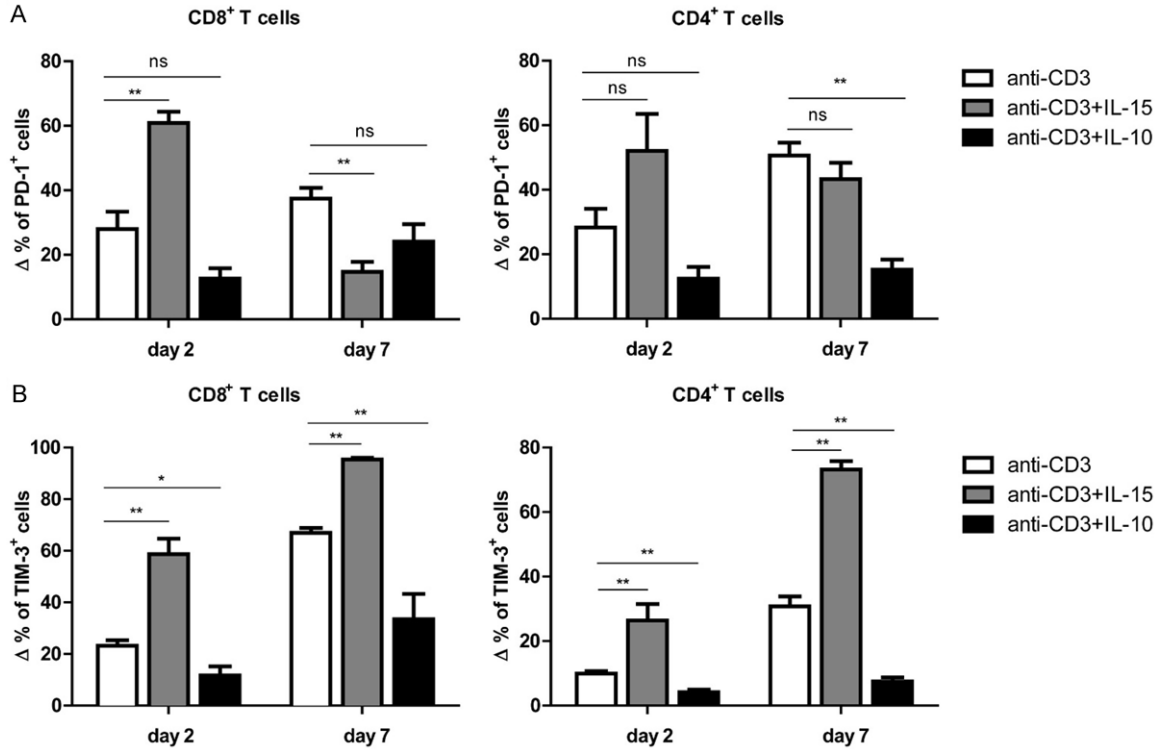


## IL-15 upregulates PD-1 & TIM-3 on T cell



**Supplementary Figure 1.** Differential induction of PD-1 (A) and TIM-3 (B) expression on CD4<sup>+</sup> and CD8<sup>+</sup> T cells following anti-CD3, combined anti-CD3 and IL-15, and combined anti-CD3 and IL-10 stimulations. The  $\Delta$  frequencies of PD-1<sup>+</sup> (A) or TIM-3<sup>+</sup> (B) on CD8<sup>+</sup> (left panel) or CD4<sup>+</sup> T cells (right panel) were calculated by subtracting day 0 condition from each stimulation condition at day 2 or day 7 (\* =  $P < 0.05$ ; \*\*\* =  $P < 0.01$ ).