

Figure S3

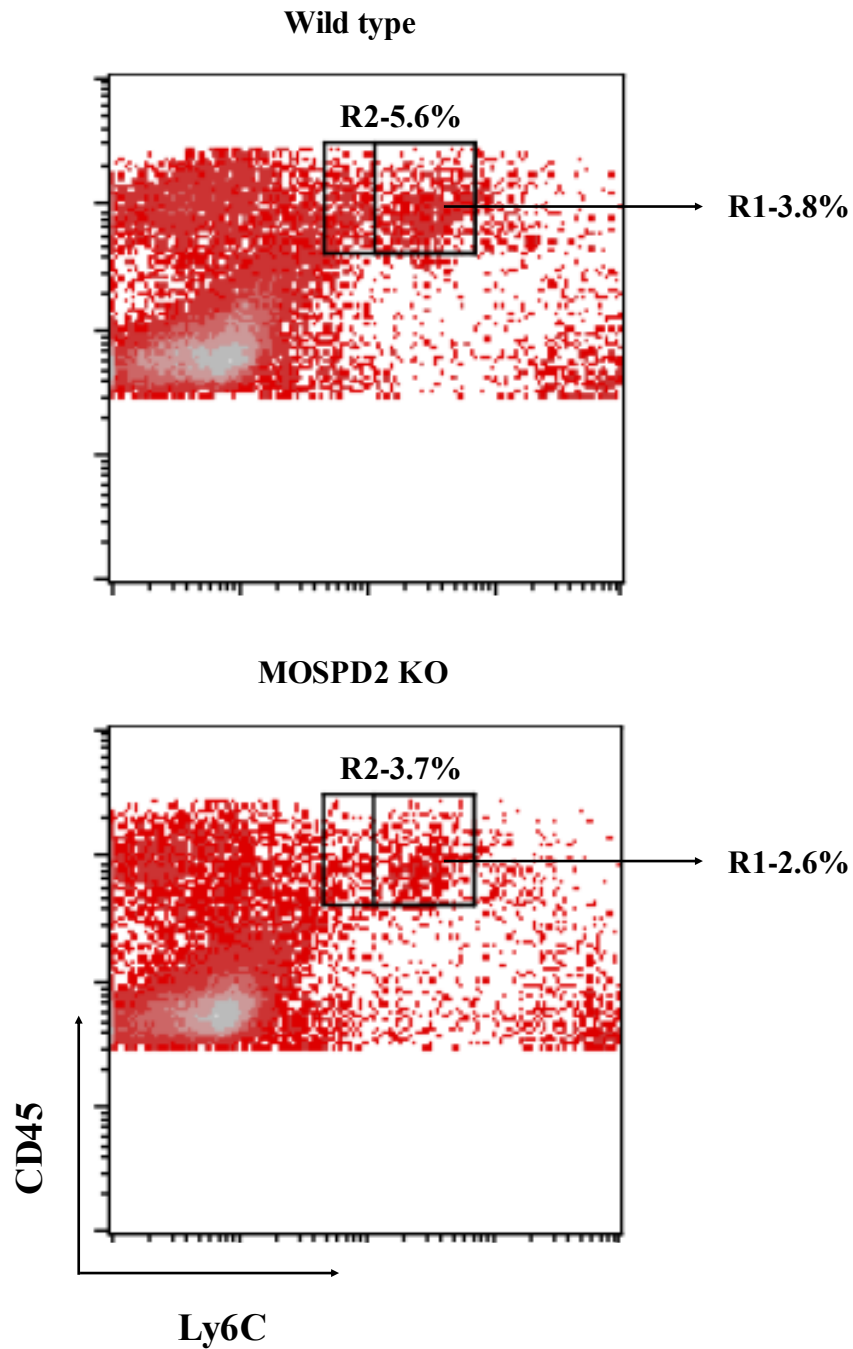


Figure S3: *Infiltration of inflammatory monocytes into the CNS*. Mononuclear cells were isolated from the brains of wild-type and MOSPD2 KO mice on day 38 after EAE induction and stained for CD45 and Ly6C. CD45 is used to distinguish between CNS-resident microglia (CD45^{low}) and invading leukocytes (CD45^{high}). Results are of pooled mononuclear cells from five mice from each group.