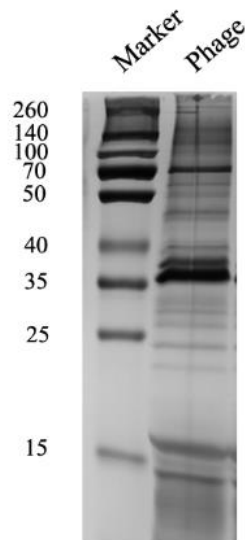
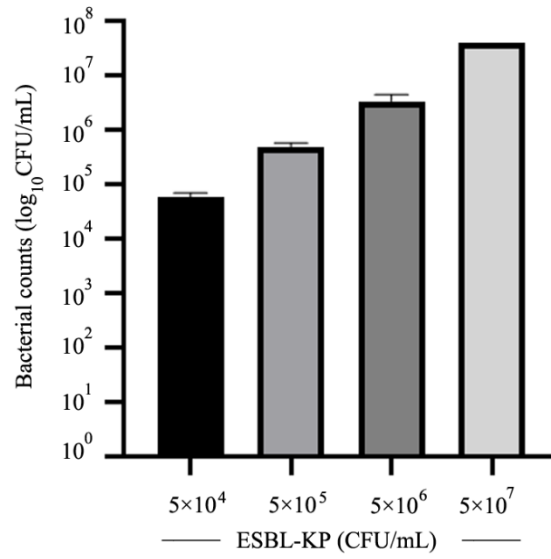


Characterization of extended-spectrum- β -lactamase producing *Klebsiella pneumoniae* phage KP1801 and evaluation of therapeutic efficacy *in vitro* and *in vivo*

Phitchayapak Wintachai^{1*}, Ampapan Naknaen², Jirapath Thammaphet¹, Rattanaruji Pomwised², Narumon Phaonakrop³, Sittiruk Roytrakul³, Duncan R Smith⁴



Supplementary Figure S1. Analysis of structural proteins of phage KP1801.



Supplementary Figure S2. Bacterial counts from infected *G.mellonella*. Experiments were undertaken independently in triplicate. The data show the mean±SD.