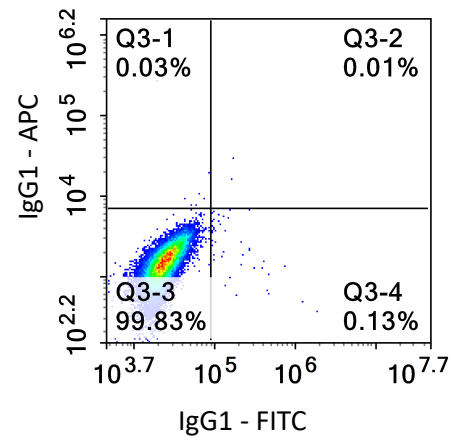
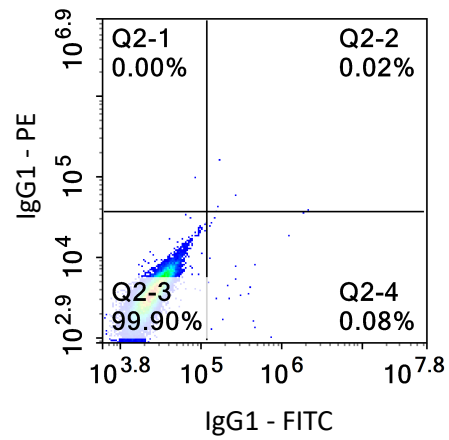
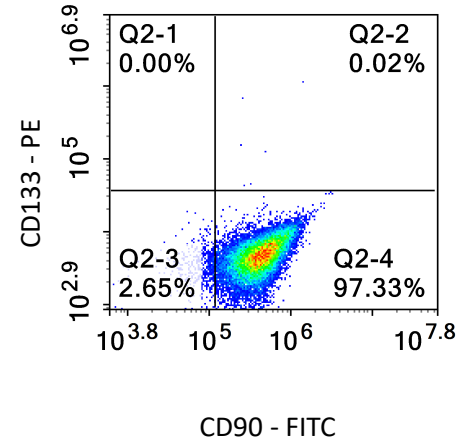
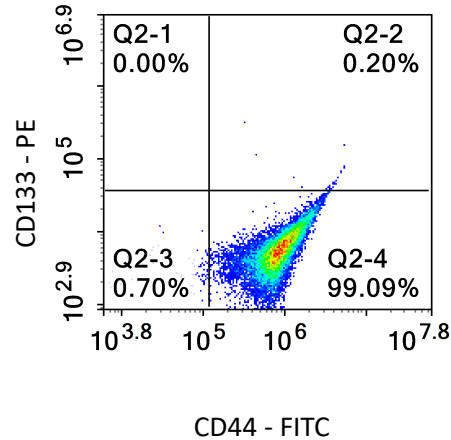
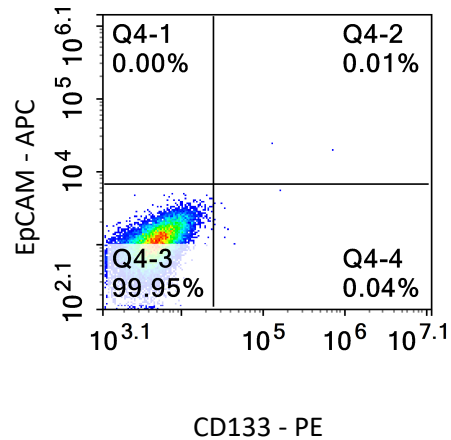
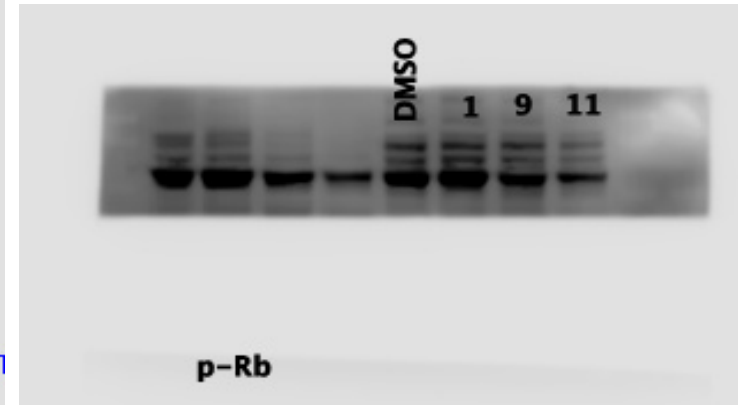
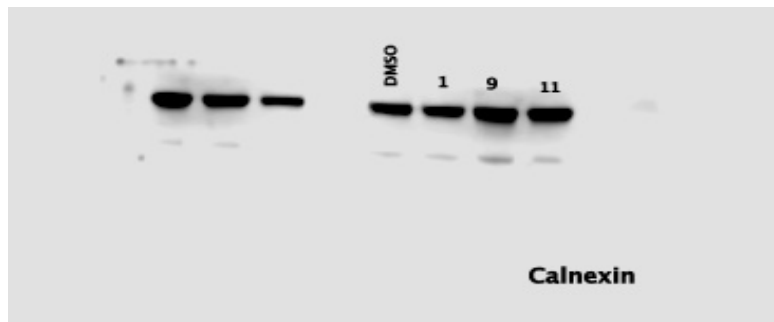
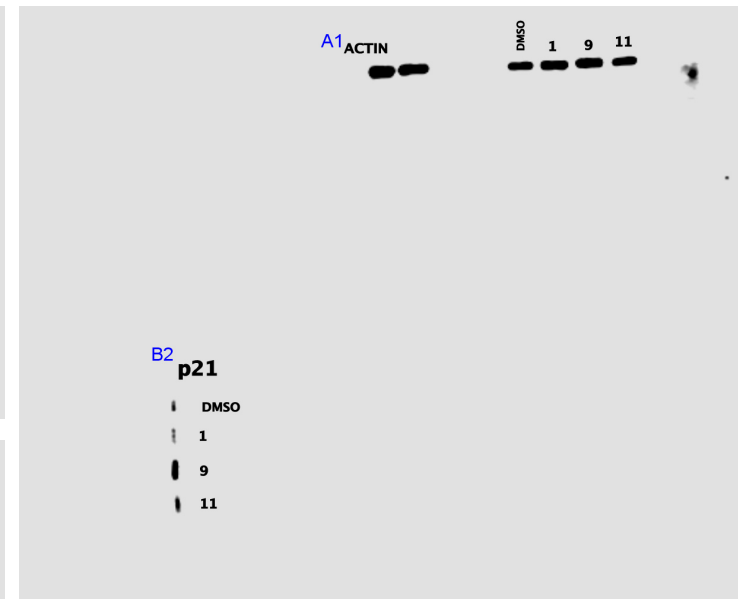
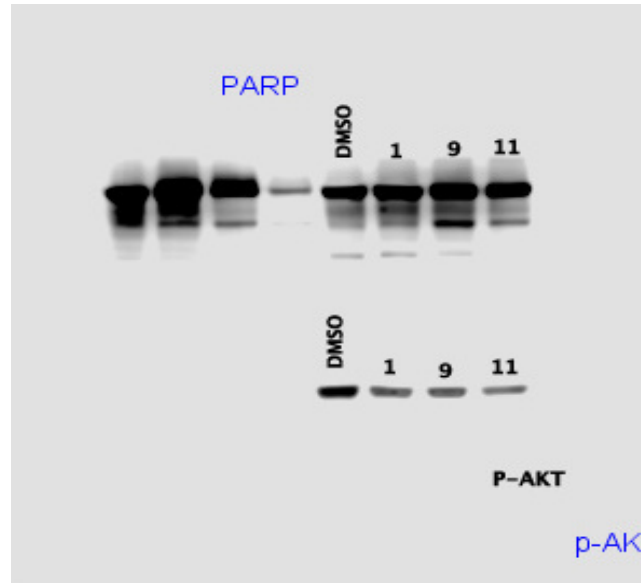
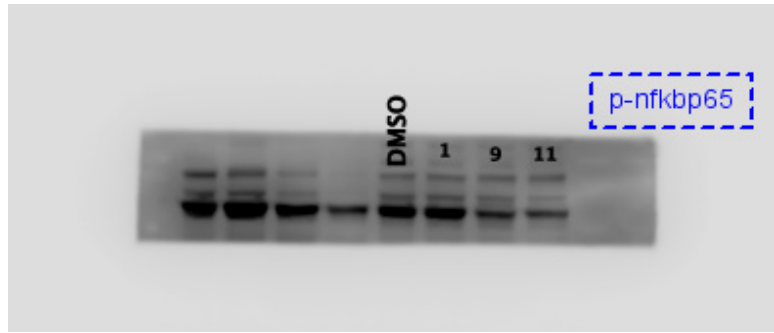
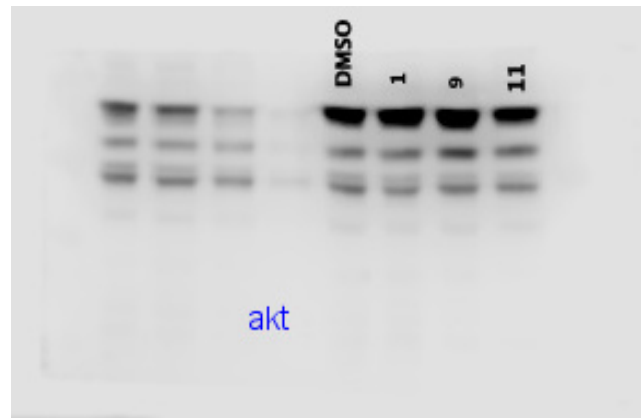
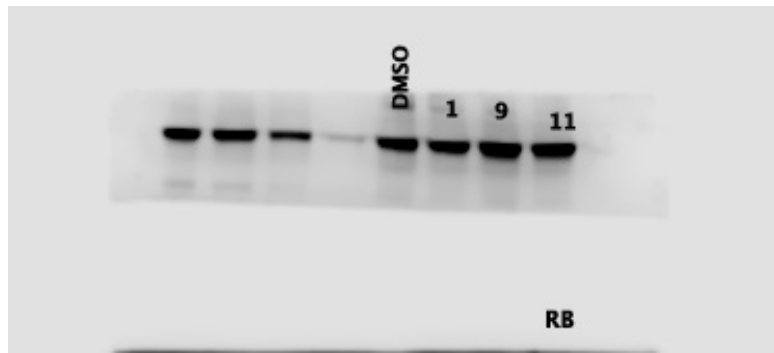


A small library of chalcones induce liver cancer cell death through Akt phosphorylation inhibition

Irem Durmaz Sahin, Michael S. Christodoulou, Ece Akhan Guzelcan, Altay Koyas, Cigdem Karaca, Daniele Passarella, and Rengul Cetin-Atalay

A**B**

Supplementary Figure S1: Characterization of DPSCs by flow cytometry. Images demonstrate the immunophenotyping of **A** Unstained; **B** Stained cells for CD44, CD90, CD133 and EpCAM markers. Intensity values for each marker display the threshold for positivity based on the IgG1 control stainings. These results pointed out that the cell population was positive for CD44+ and CD90+ markers, which is correlated with the general marker expression panel of DPSCs. In conclusion, the isolated cell population displayed characteristic mesenchymal stem cell properties.



Supplementary Figure S2: Full-length images for western blotting.