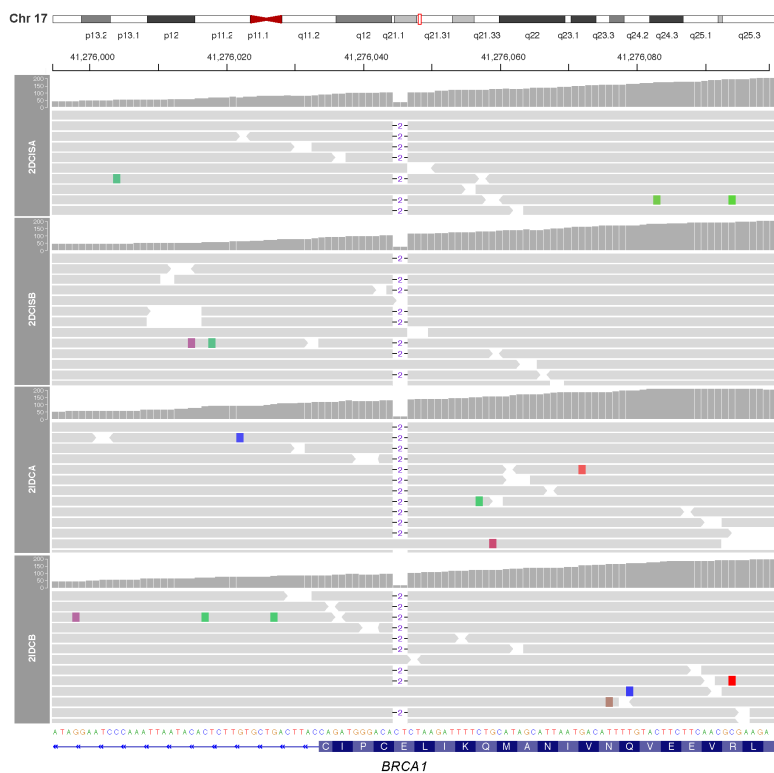
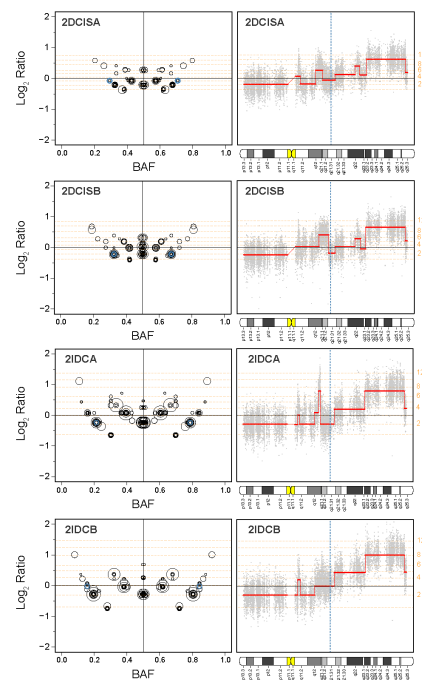


## Supplementary Figure S5

A



B



**Supplementary Figure S5. *BRCA1* loss of heterozygosity in the different foci of synchronously diagnosed ductal carcinoma *in situ* and invasive ductal carcinoma of no special type in a *BRCA1* germline carrier.**

(A) Sequence alignments of the *BRCA1* locus in the two foci of ductal carcinoma *in situ* (DCIS; 2DCISA ad 2DCISB) and two foci of invasive ductal carcinoma of no special type (IDC-NST; 2IDCA and 2IDCB) of 'Case 2'. Genomic position and depth of coverage are depicted on top. The human reference sequence is shown in the bottom. The germline indel mutation corresponding to the *BRCA1* p.E23Vfs\*17 mutation is highlighted in purple. (B) The Log<sub>2</sub> ratio (y-axis) against the B-allele frequency (x-axis) plots (top) in 2DCISA, 2DCISB, 2IDCA and 2IDCB. Each circle depicts a genome segment with the size of the circle being proportional to the segment length. Chromosome 17 segments are highlighted in blue and canonical copy numbers are shown as dashed orange horizontal lines. Log<sub>2</sub> ratio (y-axis) profiles from chromosome 17 (bottom) in 2DCISA, 2DCISB, 2IDCA and 2IDCB are depicted according to their genomic coordinates (x-axis) as represented in chromosome 17 ideograms (bottom)