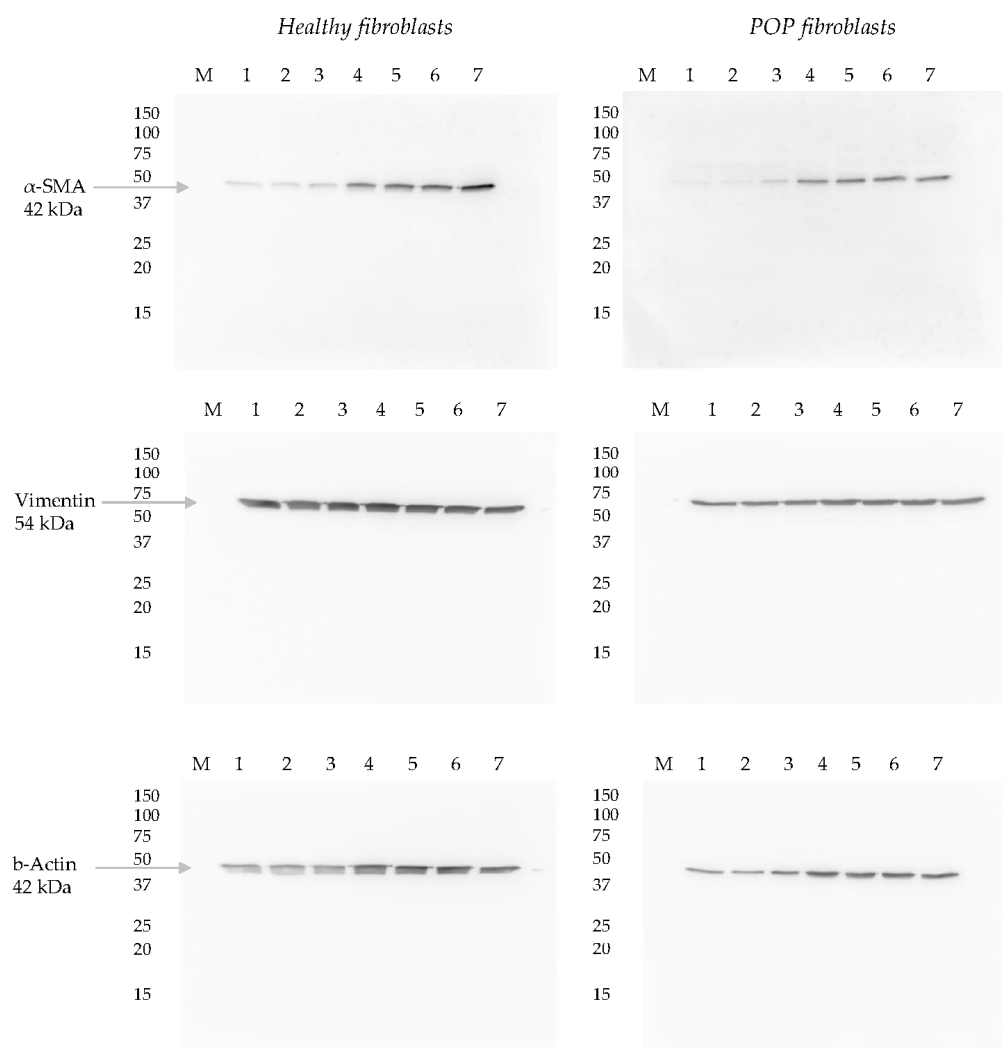


Extracellular Matrix Stiffness and Composition Regulate the Myofibroblast Differentiation of Vaginal Fibroblasts

Supplementary Materials

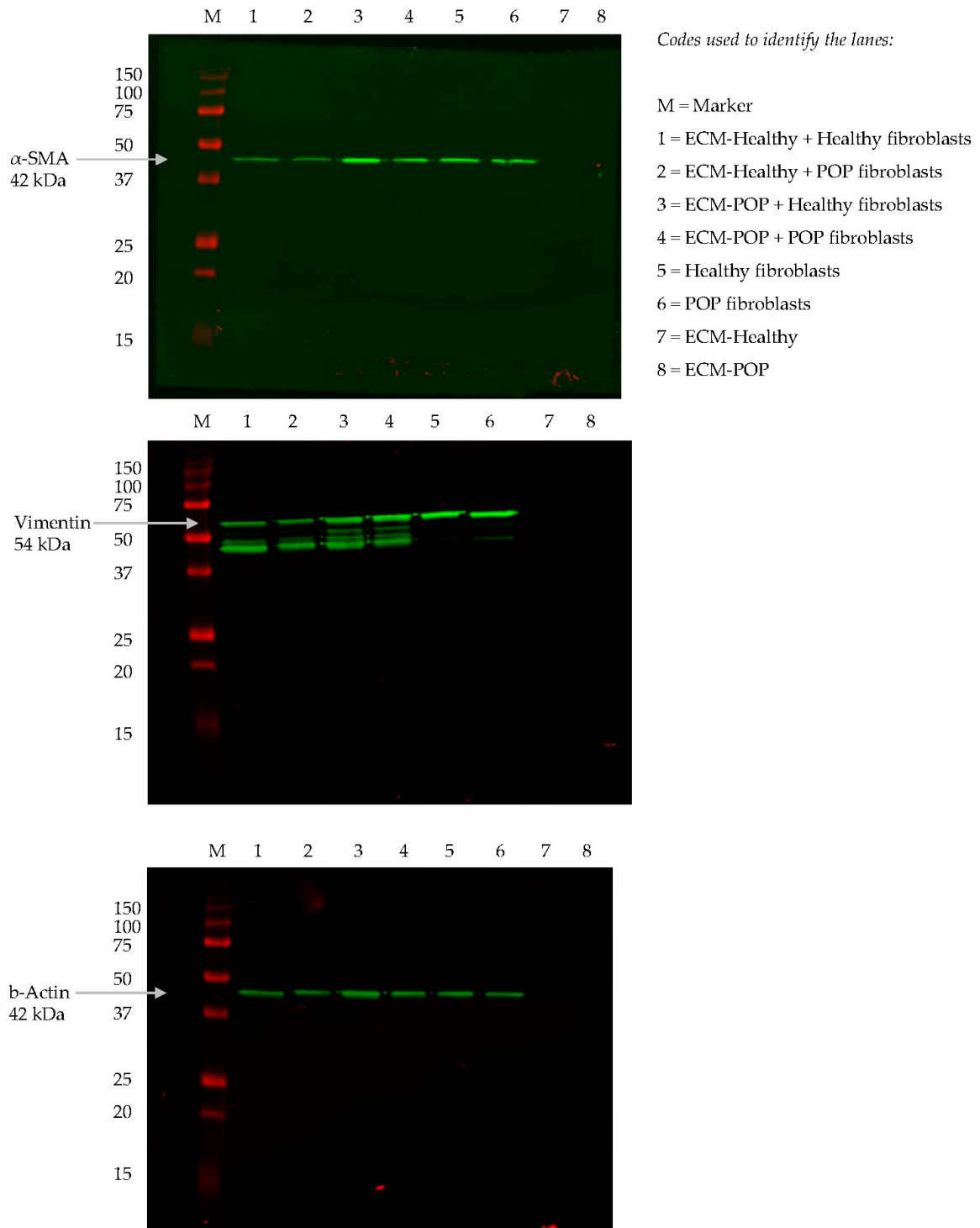


Codes used to identify the lanes:

- M = Marker
- 1 = 0,2 kPa
- 2 = 0,5 kPa
- 3 = 2 kPa
- 4 = 8 kPa
- 5 = 16 kPa
- 6 = 32 kPa
- 7 = 64 kPa

Abbreviations: α -SMA: alpha-smooth muscle actin; kPa: kilo Pascals; POP: pelvic organ prolapse

Figure S1. Original Western Blots images corresponding to Figure 1.



Abbreviations: α -SMA: alpha-smooth muscle actin; ECM: extracellular matrix; POP: pelvic organ prolapse

Figure S2. Original Western Blots images corresponding to Figure 4.