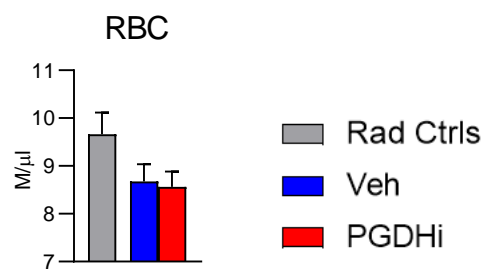
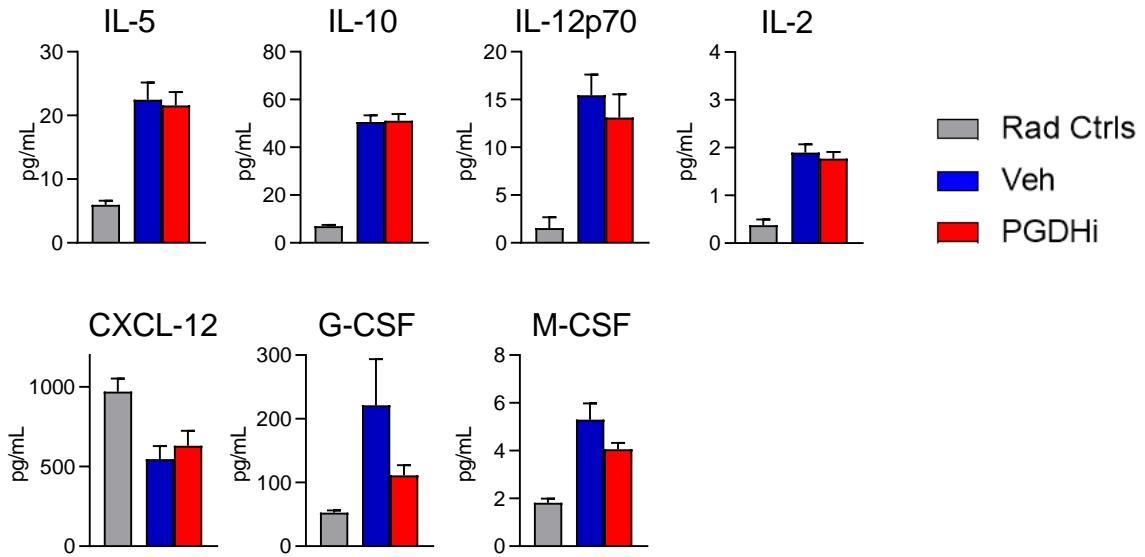


S1. Red blood cell counts are not impacted by PGDHi monotherapy

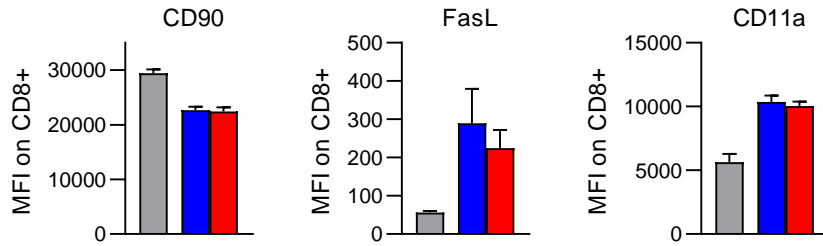


S2. PGDHi does not significantly impact inflammatory factors in the serum

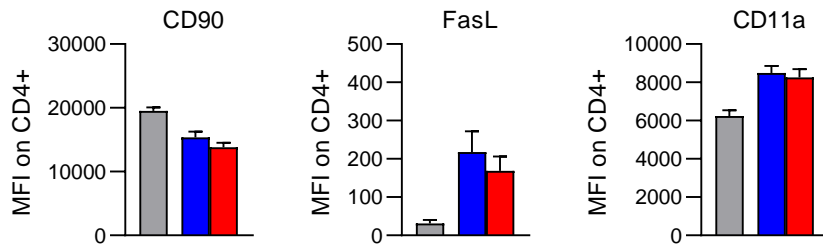


S3. PGDHi treatment does not reduce T cell expression of activation markers

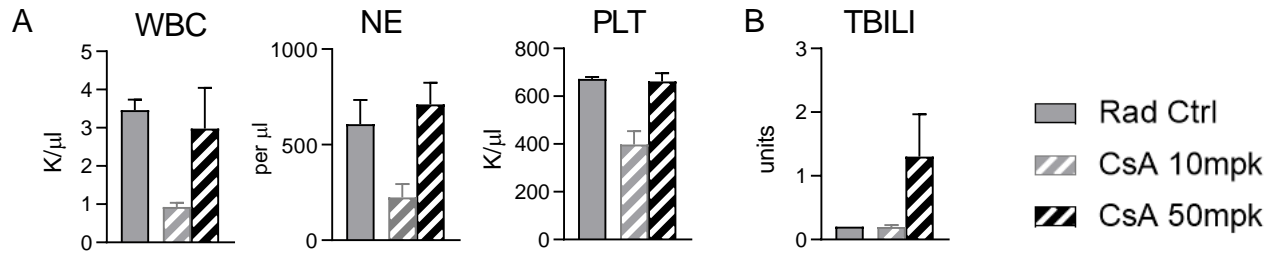
A



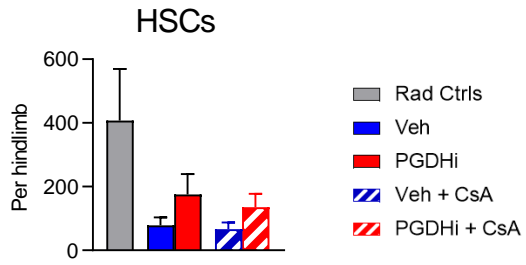
B



S4. 10mg/kg cyclosporine A is subtherapeutic but has better liver tolerability than standard dose



S5. PGDHi attenuates phenotypic HSC depletion



S6. Dual PGDHi and low dose CsA does not impact serum IFN γ

