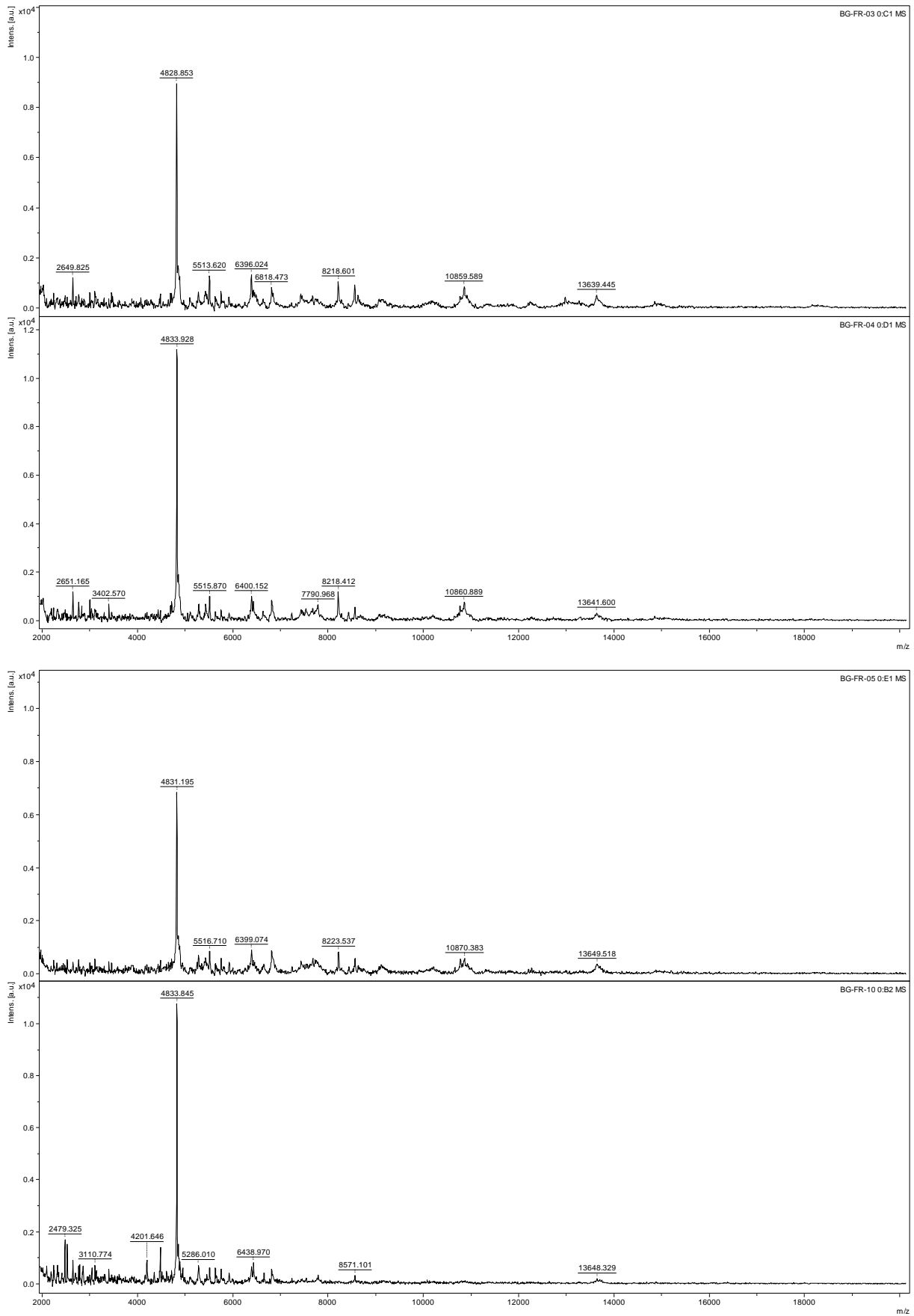
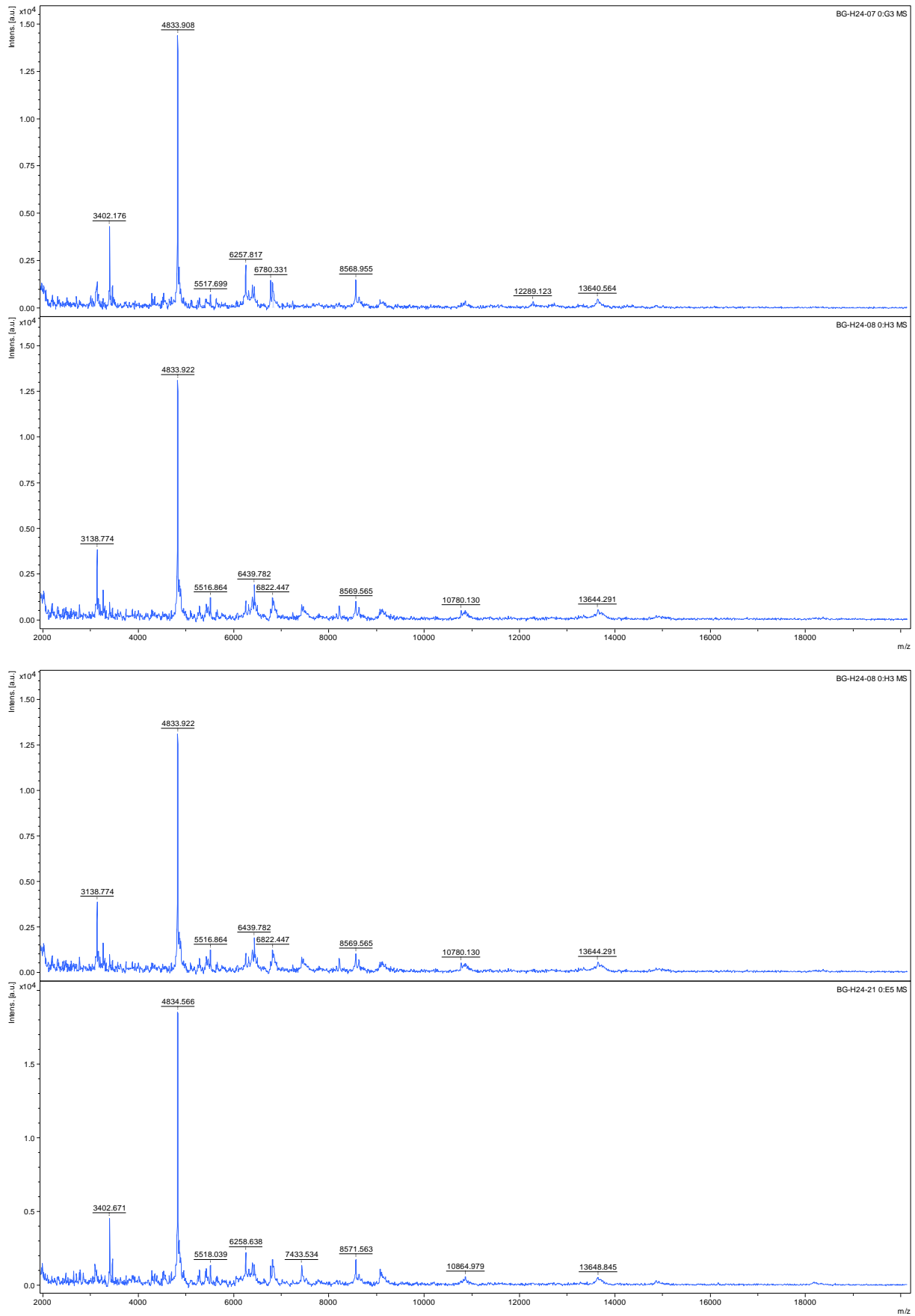


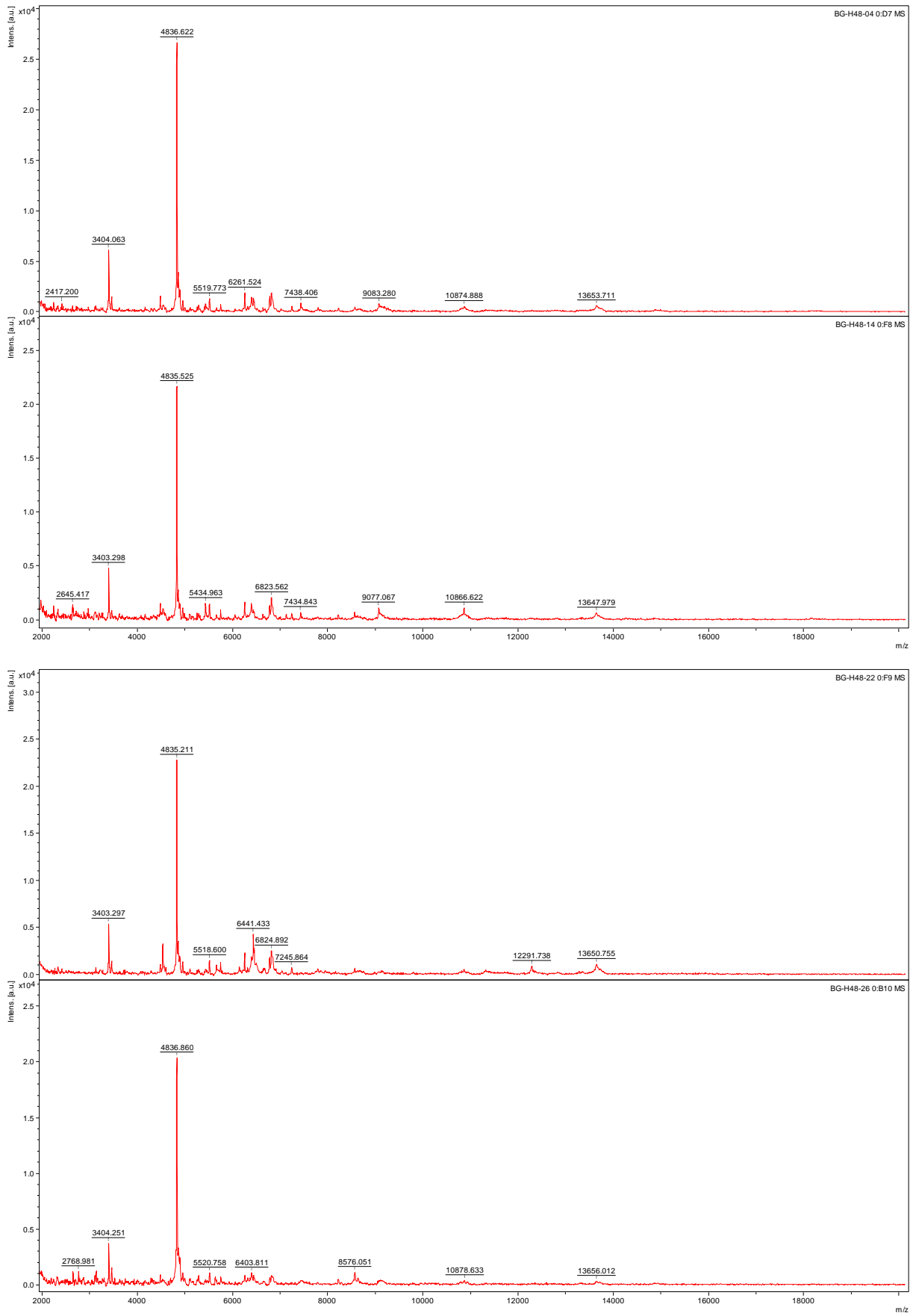
Additional file 1: Figure S1. MALDI-TOF MS spectra of fresh mosquitoes and those harvested from BG-sentinel at each same point. Spectra from three specimens per point are shown on each graphic: fresh mosquitoes (**a**); mosquitoes harvested at 24 h (**b**); mosquitoes harvested at 48 h (**c**); mosquitoes harvested at 72 h (**d**); mosquitoes harvested at 96 h (**e**); and mosquitoes harvested at 168 h (**f**). X-axis corresponds to mass to charge ration (M/z). Y-axis corresponds to relative intensity of signal. Colours illustrate each individual for each group. *Abbreviation:* AU, arbitrary units.

A

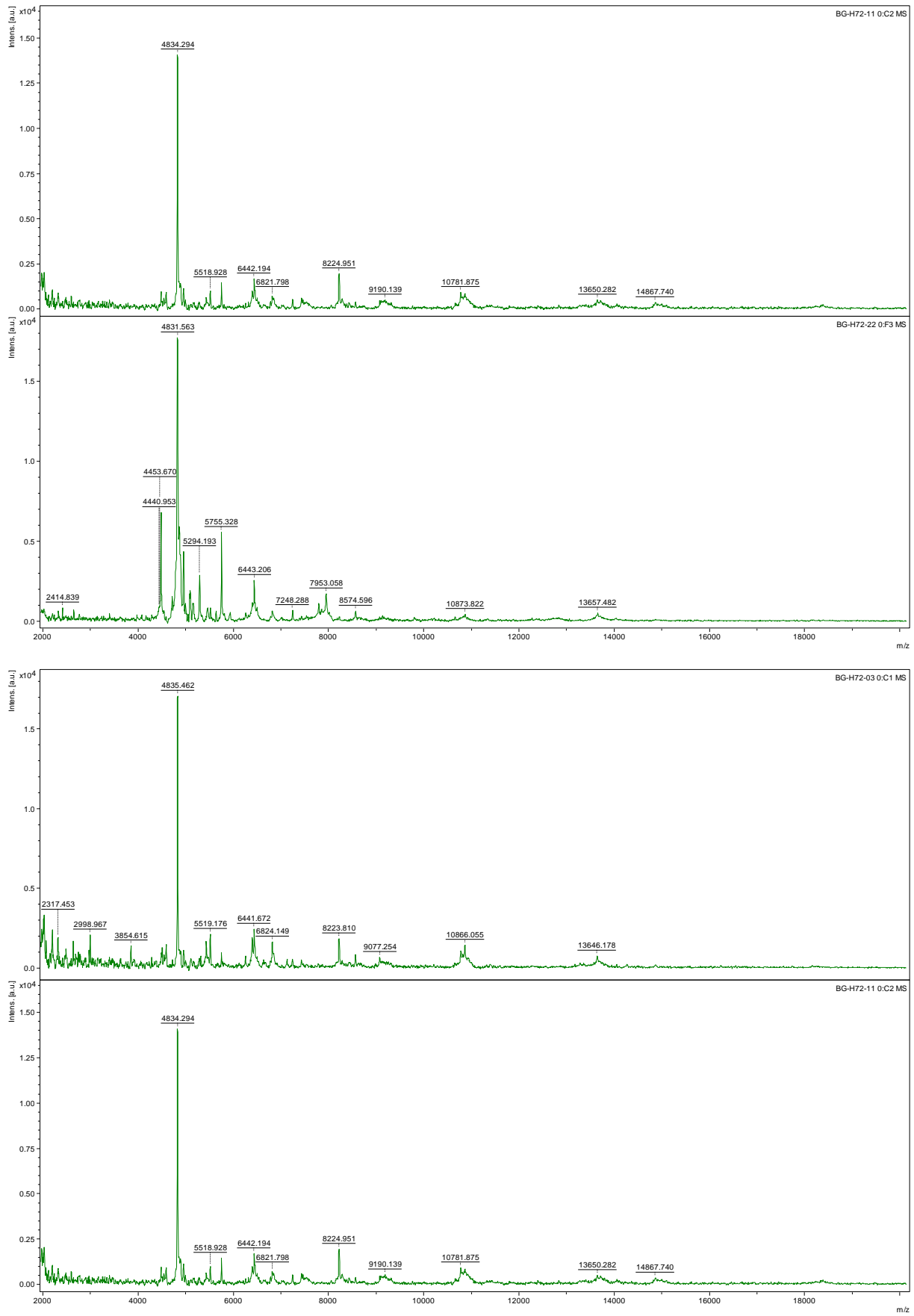
B



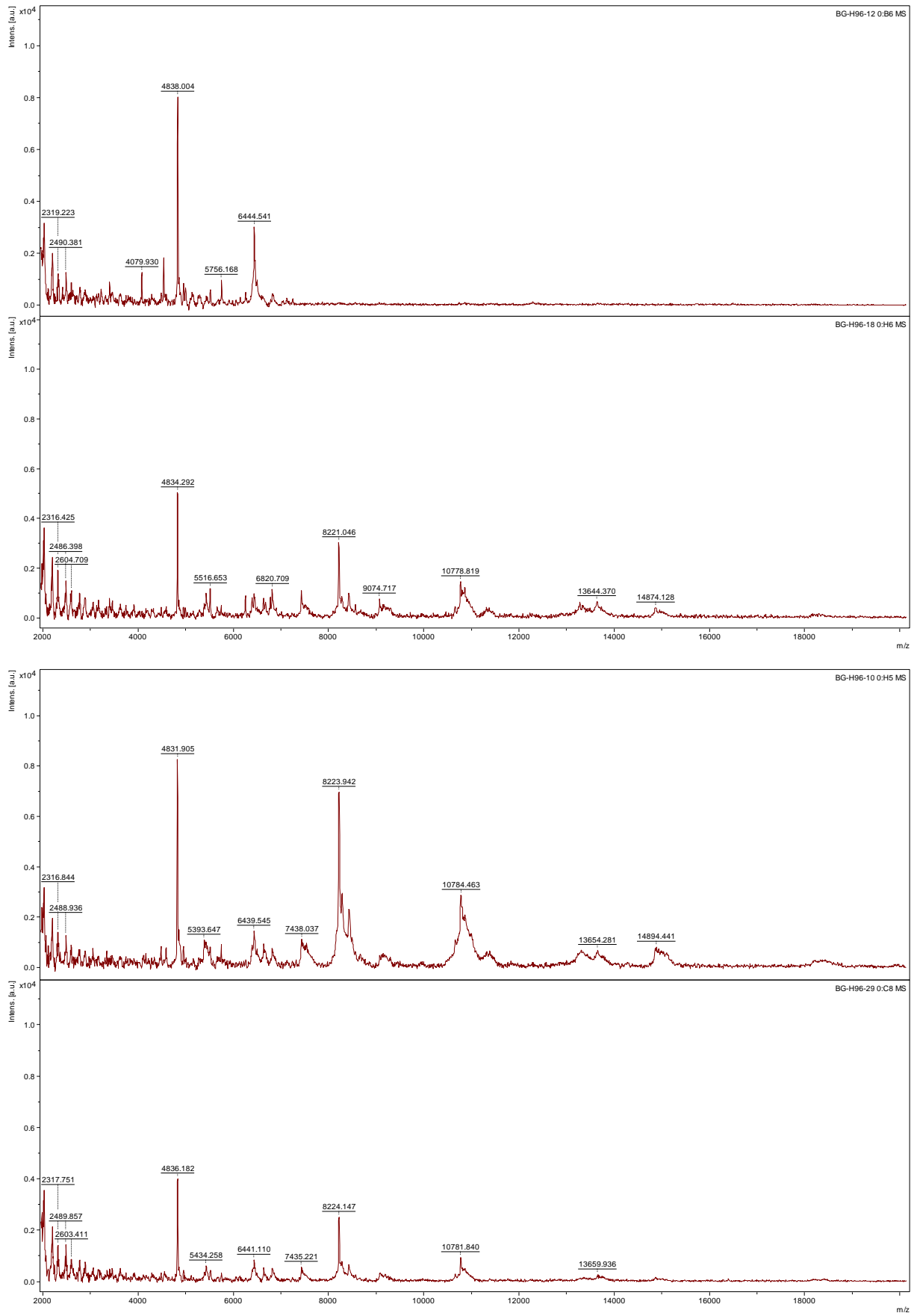
C



D



E



F