

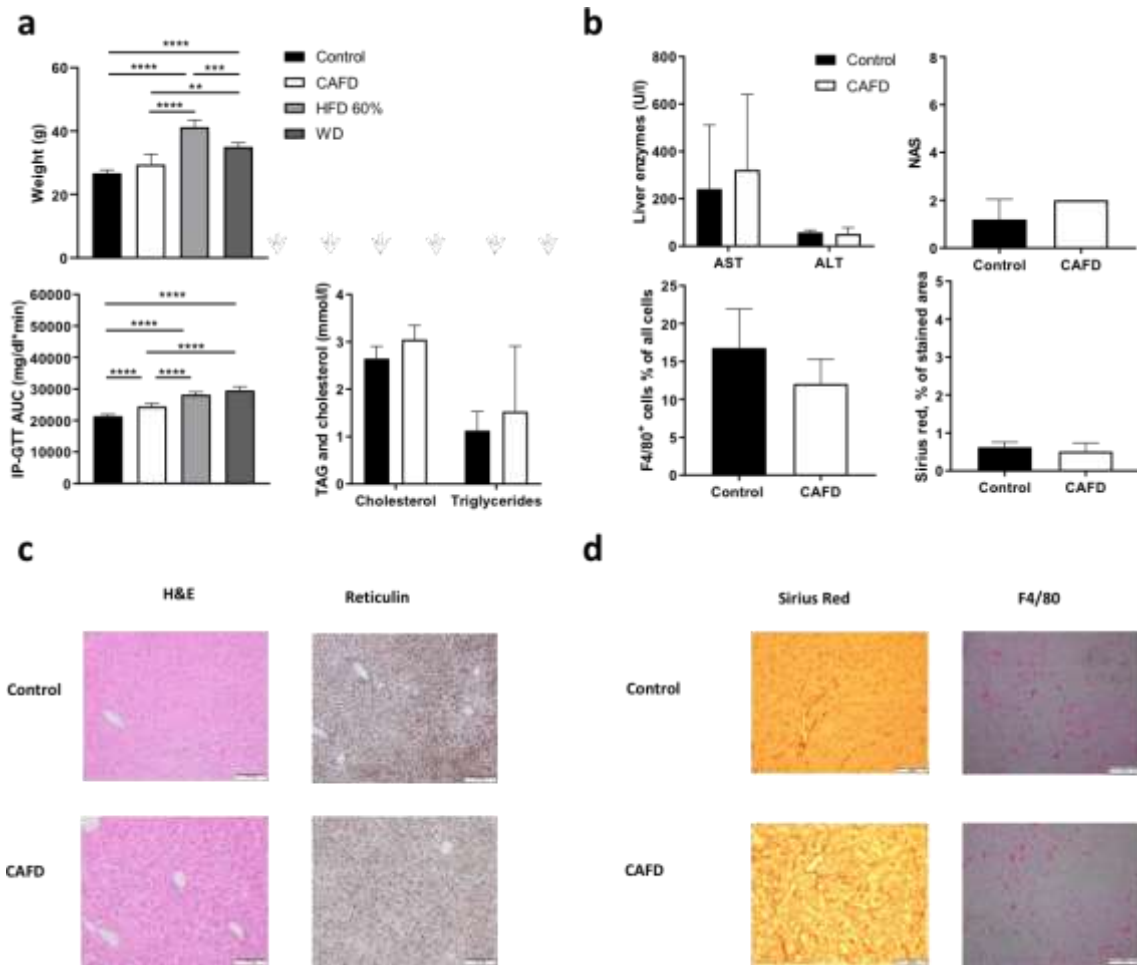
425 **Supplementary Materials**

426 Supplementary Table 1: Timetable CAFD

Day	Values are per 1 g of food item	Total kcal/g	Total fat g	Total carbohydrate g	Sugars g	Protein g
1	BiFi®(LSI-Germany GmbH, Germany)	5.1	0.45	0.01	0.009	0.25
2	Chio Flips Classic Peanut (Intersnack Switzerland Ltd., Switzerland)	4.89	0.24	0.49	0.03	0.14
3	Ültje salted peanuts (Intersnack Switzerland Ltd., Switzerland)	6.22	0.57	0.13	0.05	0.25
4	K-Classic Soft Cookies Triple Chocolate (Kaufland GmbH & Co. KG, Germany)	5.02	0.25	0.61	0.36	0.067
5	Snickers (Mars Inc., McLean, USA)	4.74	0.23	0.63	0.51	0.076

427

428



429

430 **Supplementary Figure 1: Cafeteria Diet**

431 (a) Body weight, IP-GTT, TAG and Cholesterol after 12 weeks of diet. Total body weight was significantly
 432 lower in CAFD mice than in HFD60 and WD mice. The area under the glucose time curve displays impaired
 433 glucose tolerance in CAFD mice compared to that of the control mice but on a significantly lower level than that
 434 of HFD60 and WD mice. TAG and cholesterol levels showed no differences between CAFD and control
 435 animals. (b) Serum ALT, NAS, F4/80⁺ cells % of all cells and Sirius Red (histopathology) were not different
 436 between CAFD and control mice. (c) Representative images of H&E- and reticulin-stained liver sections. (d)
 437 Representative images of Sirius red and F4/80 stained liver sections. Magnification 40x, scale bars 200 μ m.

