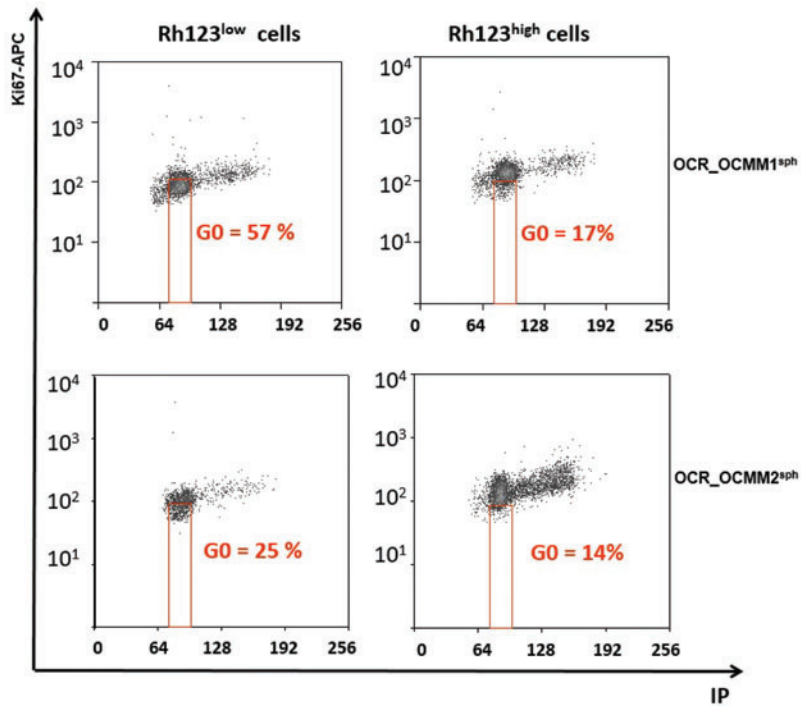


Supplementary Data



SUPPLEMENTARY FIG. S1. Rh123^{low} cells from spheroids are enriched in quiescent G0 cells in both canine melanoma cell lines. Flow cytometry Ki67/PI assay with FACS-sorted Rh123^{low} and Rh123^{high} OCR_OCMM1 and OCR_OCMM2 spheroid cells (*red box* represents the percentage of G0 cells), showing the percentage of G0 cells. FACS, fluorescence-activated cell sorting; PI, propidium iodide; Rh123, rhodamine 123.