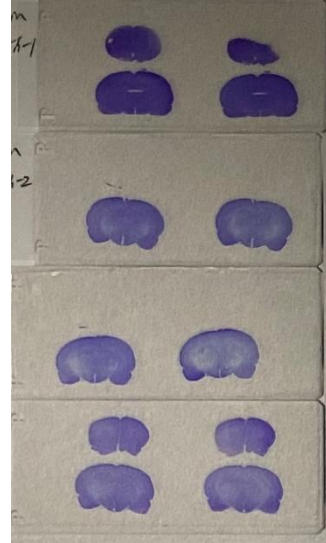


Sham + DP (0.5 mg/kg) -5hr



Sham



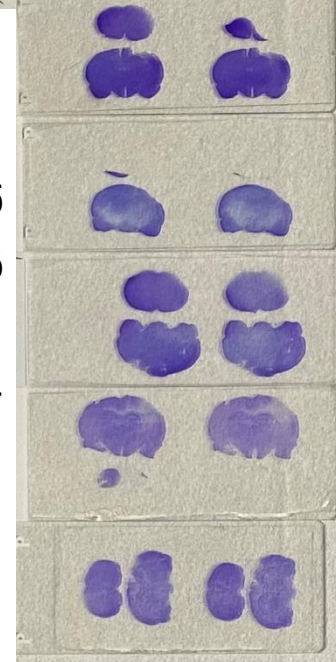
TBI + Veh



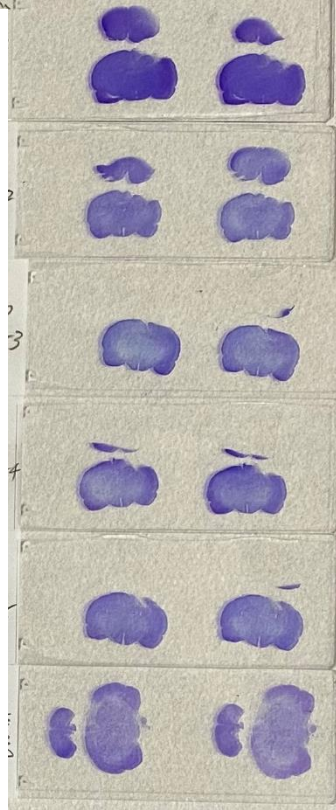
TBI + Pom (0.1 mg/kg) -5hr



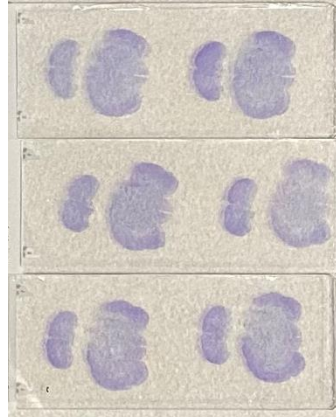
TBI + Pom (0.5 mg/kg) -5hr



TBI + DP (0.5 mg/kg) -5hr



TBI + DP (0.5 mg/kg) -7hr



TBI + DP (0.1 mg/kg) -5hr

