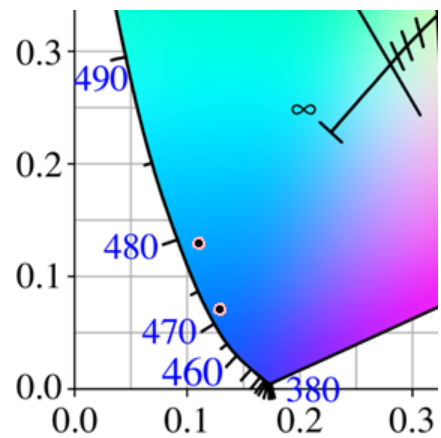


Supplementary Information for

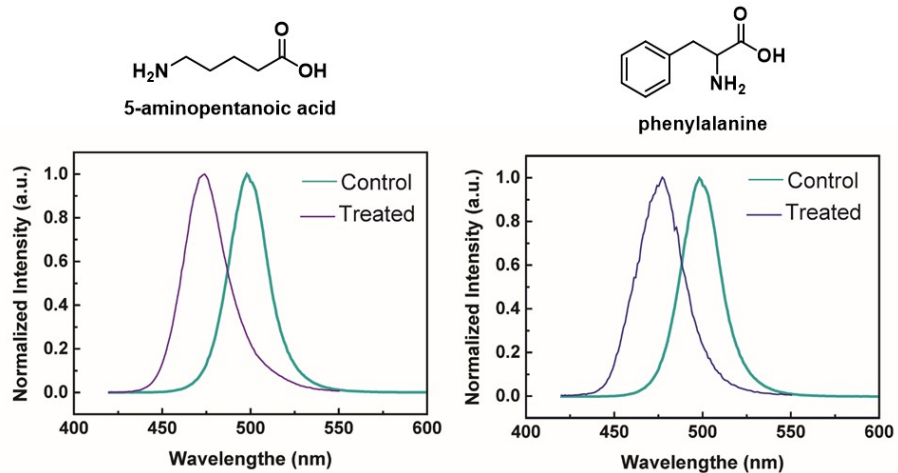
Chelating-agent-assisted control of CsPbBr₃ quantum well growth enables stable blue perovskite emitters

Ya-Kun Wang *et al.*

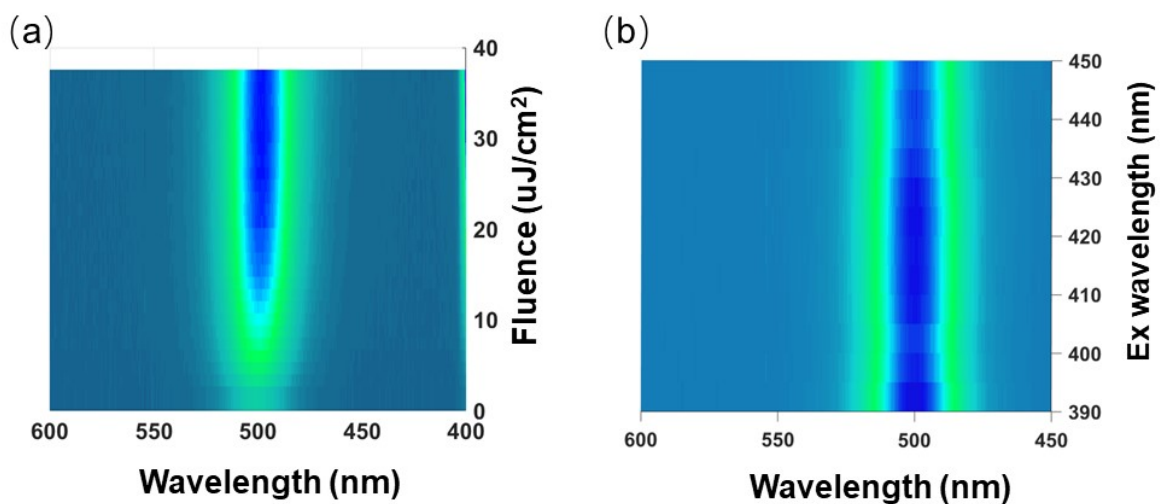
Supplementary Figures



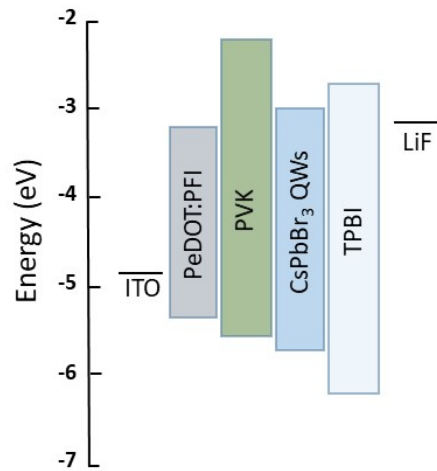
Supplementary Figure 1. CIE coordinate of $\langle n \rangle = 2$ and 3 CsPbBr₃ thin-films with GABA-treatment.



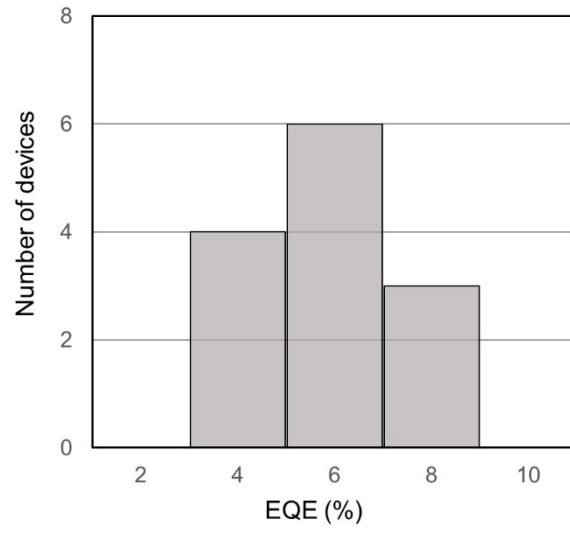
Supplementary Figure 2. PL spectra of control films other amino-acid-treated films.



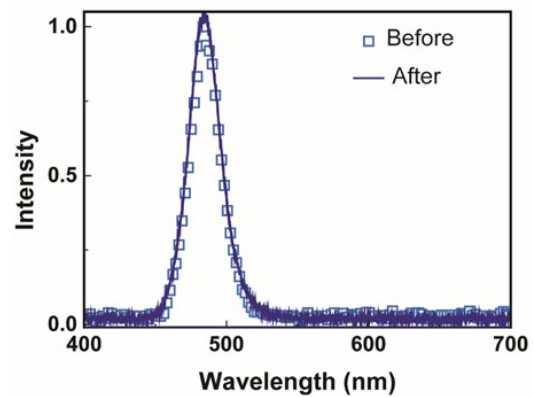
Supplementary Figure 3. (a) Power-dependent photoluminescence spectra and (b) excitation wavelength dependent photoluminescence spectra of control CsPbBr₃ thin-films.



Supplementary Figure 4. Energy level of LEDs fabricated using perovskite QWs.



Supplementary Figure 5. EQE histograms of blue LED with GABA-treatment.



Supplementary Figure 6. EL spectra of GABA-treated CsPbBr₃ device before and after stability measurement.