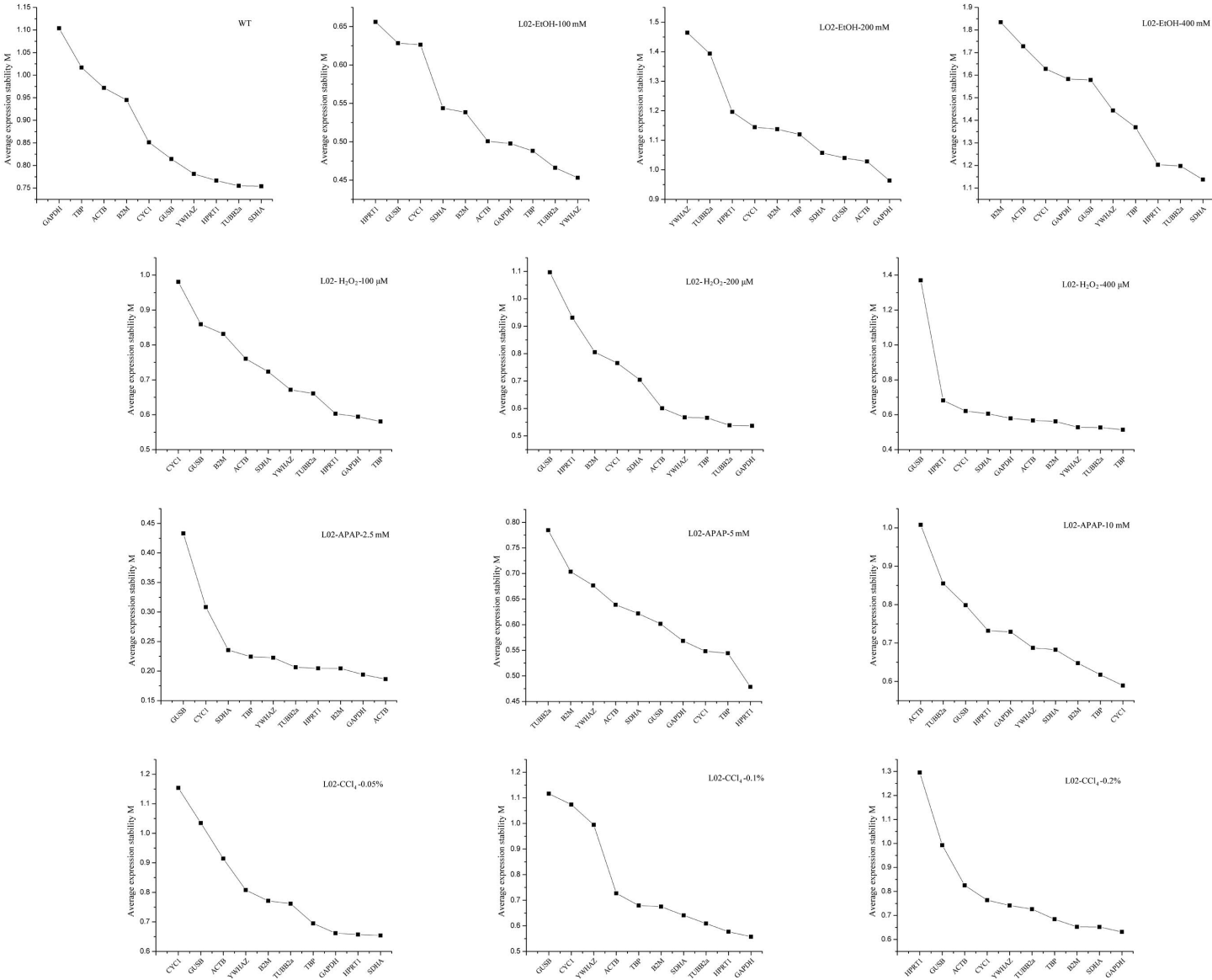
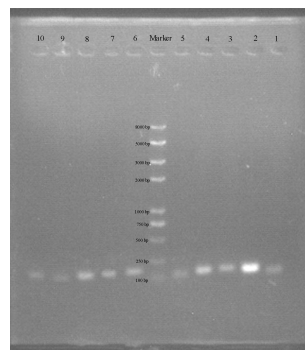


S1 Figure Expression stability of the housekeeping genes in L02 evaluated by geNorm M values represent the average expression stability. From left to right, the value of M decreased in turn, indicating the stability gradually increased.

Smaller M value means higher stability. The control group, ethanol, hydrogen peroxide, acetaminophen and carbon tetrachloride were abbreviated to WT, EtOH, H2O2, APAP and CCl4 respectively.



S2 Figure Agarose gel (1%) electrophoresis of the ten candidate housekeeping genes. 1-10 represent ACTB, B2M, GAPDH, TUBB2a, HPRT1, SDHA, TBP, YWHAZ, CYC1 and GUSB, respectively



S3 Figure Melt curves of the ten candidate housekeeping genes.

