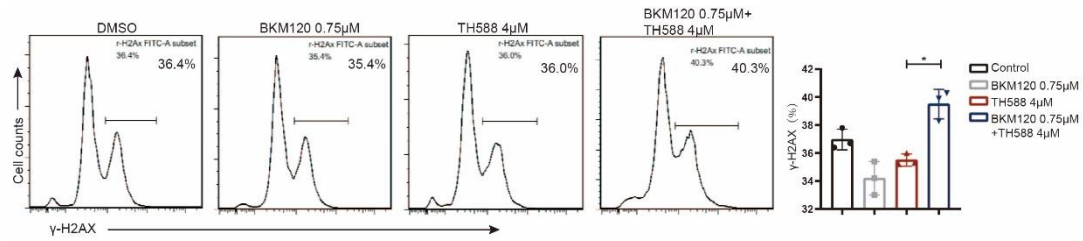


**Figure S3**



**Figure S3. Treatment of BKM120 and TH588 caused elevation of  $\gamma$ -H2AX-positive cells.**

Left: Flow cytometry analysis of  $\gamma$ -H2AX stained LN229 GBM cells following treatment of vehicle (DMSO), BKM120, TH588 and combination of both for 24 h. Right: Quantification of  $\gamma$ -H2AX-positive LN229 cells of each type of treatment in triplicates.