

Figure S4

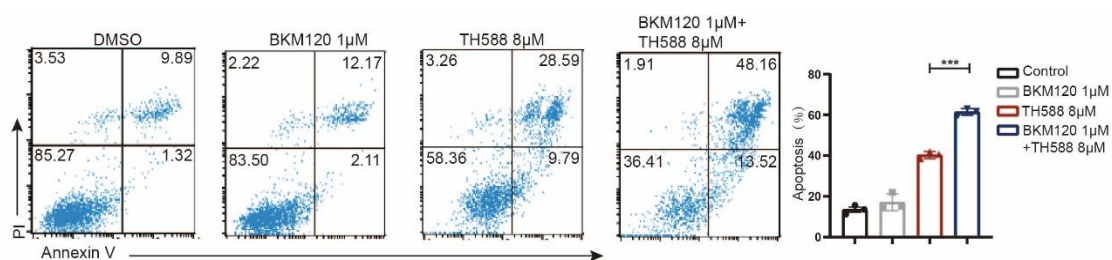


Figure S4. Flow cytometric analysis of apoptotic cells upon treatment of TH588 and/or BKM120. Left: H460 cells were treated with vehicle (DMSO), BKM120, TH588 or combination of both for 24 h and analyzed by flow cytometry for quantification of the fraction of apoptotic cells (pre-stained with annexin V/PI). Right: Quantification of apoptotic fraction of H460 cells received each type of treatment in triplicates.