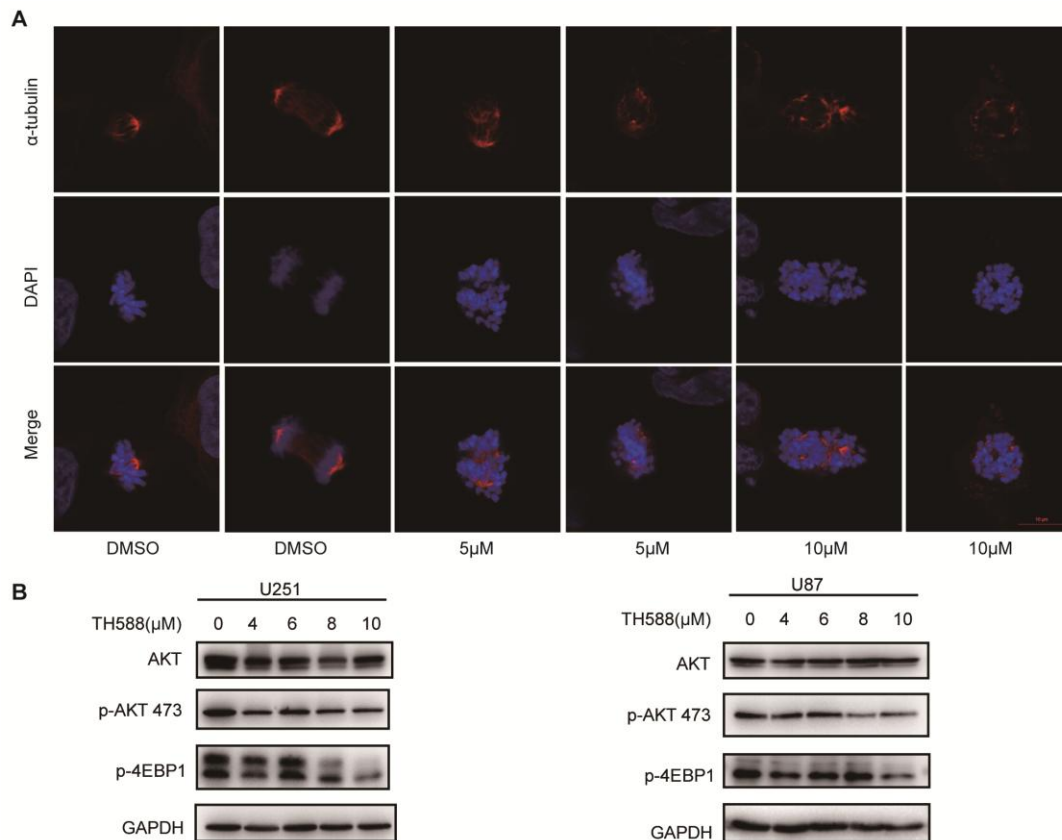


**Figure S5**



**Figure S5. TH588 disrupts mitotic spindles and causes AKT pathway downregulation.**

(A) Photomicrographs of mitotic cells treated with DMSO or TH588 for 48 hours showing  $\alpha$ -tubulin (red), and chromatin (blue, DAPI). Scale bar = 10  $\mu$ m. (B) Western blot analysis of components from the AKT pathway were analyzed after 48 hours treatment of TH588.