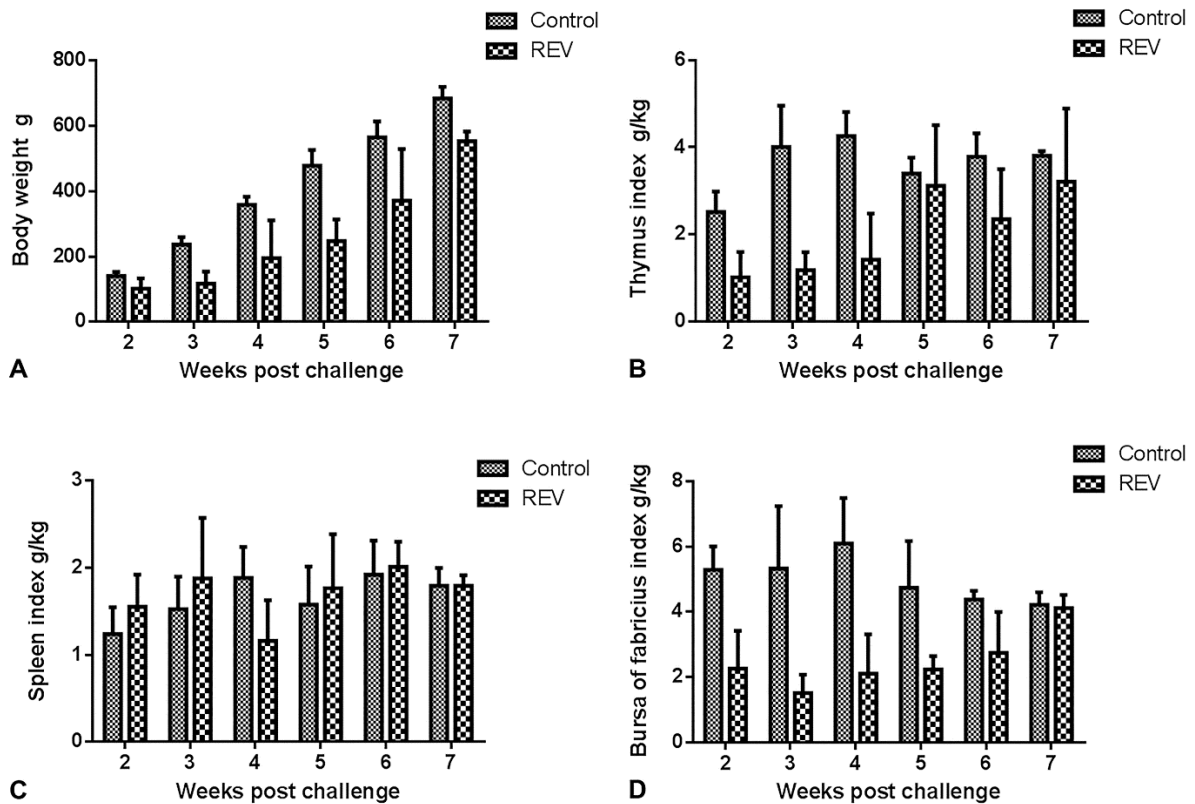
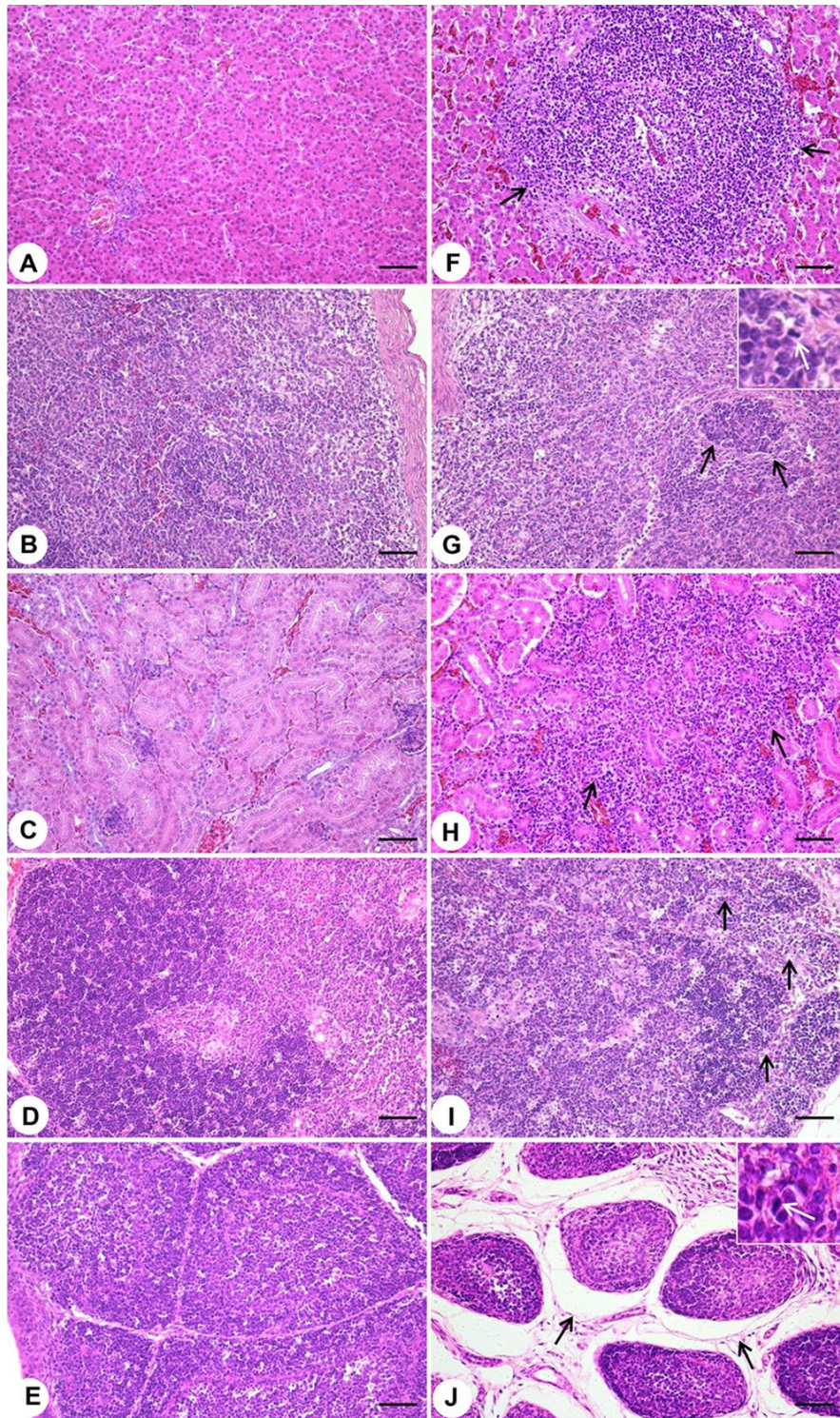


Xu A, et al. Isolation and pathogenicity testing of avian reticuloendotheliosis virus from layer chickens in China



**Supplementary Figure 1.** Changes in bodyweight and immune organ indices of chickens experimentally infected with avian reticuloendotheliosis virus (REV). **A.** Bodyweight. **B.** Thymus index. **C.** Spleen index. **D.** Bursa of Fabricius index. Error bars = 1 standard deviation.



**Supplementary Figure 2.** Histologic lesions in specific pathogen-free chickens infected with avian reticuloendotheliosis virus isolate BJ1503 at various days post-infection (dpi). H&E. Bars = 50  $\mu$ m. **A–E.** Liver, spleen, kidney, thymus, bursa of Fabricius in control group, respectively.

**F.** Tumor cells containing reticular cell infiltration in the liver; arrows indicate tumor cells (49 dpi). **G.** Lymph sinus expansion, tumor cell infiltration, and mitotic figure in the spleen; arrows indicate tumor cells. Inset: arrow indicates mitotic figure (14 dpi). **H.** Tumor cell infiltration in the kidney; arrows indicate tumor cells (49 dpi). **I.** Significant reduction of the cortical area, lymphocyte necrosis in the thymus; arrows indicate reduction of the cortical area (14 dpi). **J.** Lymphoid follicular atrophy in the bursa of Fabricius; numbers of lymphocytes in medullary follicles are decreased significantly; arrows indicate lymphoid follicular atrophy. Inset: arrow indicates mitotic figure in the bursa of Fabricius (42 dpi).