

ESI

Photodynamic exposure of Rose-Bengal inhibits Tau aggregation and modulates Cytoskeletal network in neuronal cells

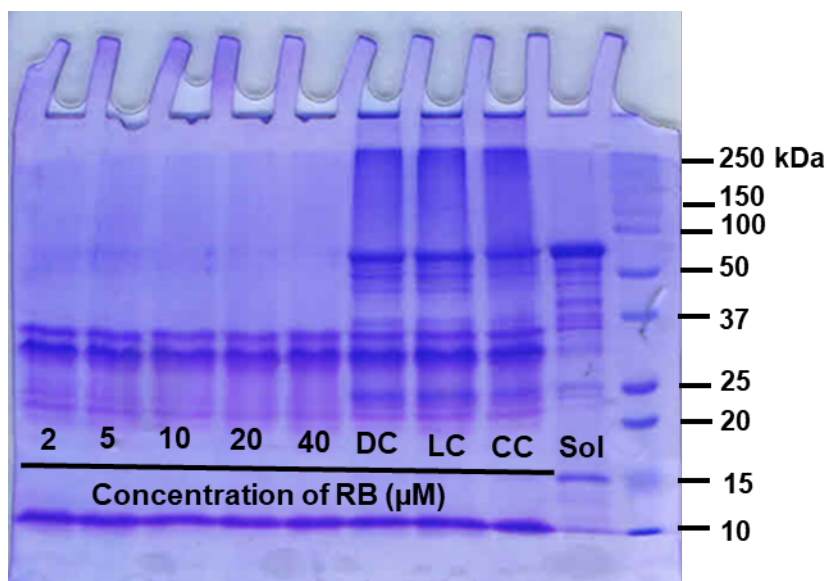
**Tushar Dubey^{1,2}, Nalini Vijay Gorantla^{1,2} Kagepura Thammaiah Chandrashekara³,
Subashchandraboze Chinnathambi^{1,2*}**

¹Neurobiology Group, Division of Biochemical Sciences, CSIR-National Chemical Laboratory,
Dr. Homi Bhabha Road, 411008 Pune, India

²Academy of Scientific and Innovative Research (AcSIR), Ghaziabad, 201002, India

³Institution of Excellence, Vijnana Bhavan, University of Mysore, Manasagangotri,
570006 Mysore, India

Supplementary 1



Supplementary 1: The raw SDS-PAGE image for PE-Rose Bengal Disaggregates Tau filaments. The aggregates have been treated with various concentrations of photo-excited RB. DC, is designated for “Dark control” where, the aggregates were incubated with 20 μM of non photo-excited RB. LC, designated for “light control” where, the aggregates were exposed to light in absence of RB. CC, is designated for “untreated control”. Monomeric Tau was also been loaded on gel for reference which has been designated as “Sol”.