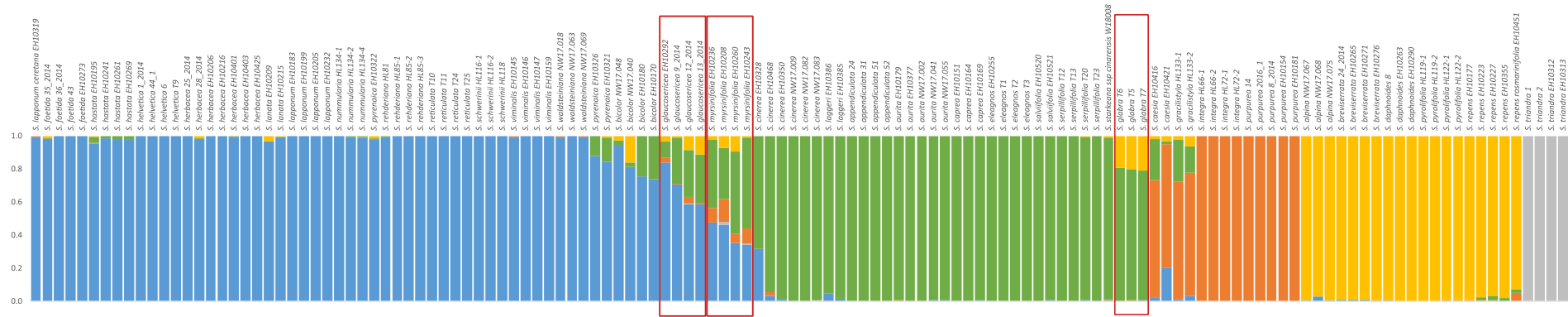


Wagner et al. - Supplement Fig. S4



Supplement Fig. S4. Genetic structure analysis of the complete data set including 133 taxa samples based on 1,655 unlinked SNPs for most likely K=5. Higher polyploids *S. glaucosericea* (8x), *S. myrsinifolia* (6x) and *S. glabra* (6x) are indicated by red boxes.