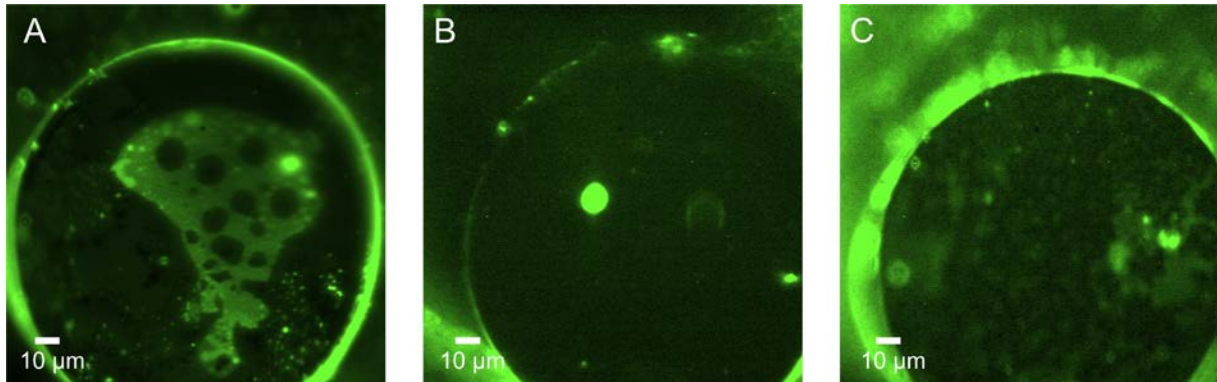


Fig. S1



Fluorescence microscopic image of a planar monolayer (first step in the Montal-Mueller setup) prepared with 1 mol% NBD-PE doped LPS R45 monolayer over the aperture of a septum at 37°C (A), after heating to 42°C (B) and subsequent cooling to 37°C (C) (buffer composition: 100 mM KCl, 5 mM MgCl<sub>2</sub>, 5 mM HEPES, pH 7). The exposure times for these images were 200 ms (A and C) and 1 s (B).